



IMPORTANT SAFETY RECALL

NHTSA Recall ID: 22T006

Dear Customer,

Date: 06.29.2022

This notice is sent to you in accordance with the National Traffic and Motor Vehicle Safety Act.

Continental Tire the Americas, LLC ("CTA") has determined that several articles from Continental Tire brand tire lines ContiGo!, TKC80, LB and K62, fail to conform to Federal Motor Vehicle Safety Standard No. 119, "New pneumatic tires - other than passenger cars."

CTA has initiated a tire safety recall to remove these tires from service. You have been identified as a potential owner of an affected tire.

Please read this notice carefully and follow the steps outlined in the instructions below.

Why is CTA Taking this Action?

CTA has determined that groove cracks in the tread rubber developed during Internal testing. Groove cracking may appear during the tire service life and can lead to tread separation, increasing the risk of a crash.

Affected Tires

The affected tires were sold as replacement and original equipment tires. The tires must match both the tire line, full DOT tire identification number (TIN) and production period to be part of the recall:

1. Tire Lines - ContiGo!, LB, K62 and some sizes of the TKC80 tire line
2. DOT TIN's - see list of affected tires shown in Attachment no. 1 below
3. Production period: 0119 to 1722

Examples for full identification see Attachment no. 2 and 3.

What Should You Do?

If you have one of the covered tires, please contact us at the toll-free number 1-888-799-2168 (Menu option – Motorcycle Tire Recall) to confirm that your tire is eligible for a free replacement with a substantially similar tire.

If you have disposed of the affected tire already or sold the vehicle on which it was mounted, please contact us at 1-888-799-2168 (Menu option - Motorcycle Tire Recall) with the name and address of the new owner.



What Will CTA Do for You?

If you have an affected tire in service on the date you receive this notice, CTA recommends you return it to the place of purchase or your nearest Continental Tire dealer. CTA will replace the affected tire free of charge within 180 days of the receipt of this letter with a comparable tire and send a reimbursement check to you to cover the costs for mounting, balancing, disposal, and taxes.

If you have already replaced an affected tire prior to receipt of this notice due to the condition described, CTA will reimburse you for the original price of the tire, including mounting, balancing, and taxes. To be eligible for reimbursement, you must submit the required documents to CTA within 180 days of receipt of this letter.

For reimbursement requests submitted later than 180 days, CTA will pay you a prorated portion based on the percentage of useable tread remaining on the tire you are replacing.

If you believe that CTA has failed or is unable to remedy the defect without charge or within a reasonable amount of time, you may submit a complaint to the Administrator, National Highway Traffic Safety Administration, 1200 New Jersey Avenue, SE, West Building, Washington, DC 20590, or call the toll-free Auto Safety Hotline at 1-888-327-4236 (TTY: 1-800-424-9153) or go to <http://www.nhtsa.gov>.

Federal law requires that any vehicle leaser receiving this recall notice must forward a copy of this notice to the lessee by First Class Mail within ten days of your receipt of this notice.

We apologize for any inconvenience that this action may cause you. Because we are concerned about your safety, we urge you to take immediate action. Thank you in advance for your cooperation. If you have any questions about these instructions, please refer to our website <https://www.recallapps.com/app/continentaltires> or contact us at 1-888-799-2168 (Menu option - Motorcycle Tire Recall) for assistance.

Sincerely,

Continental Tire the Americas, LLC
1830 MacMillan Park Drive
Ft. Mill, SC 29707



Attachment no.1.

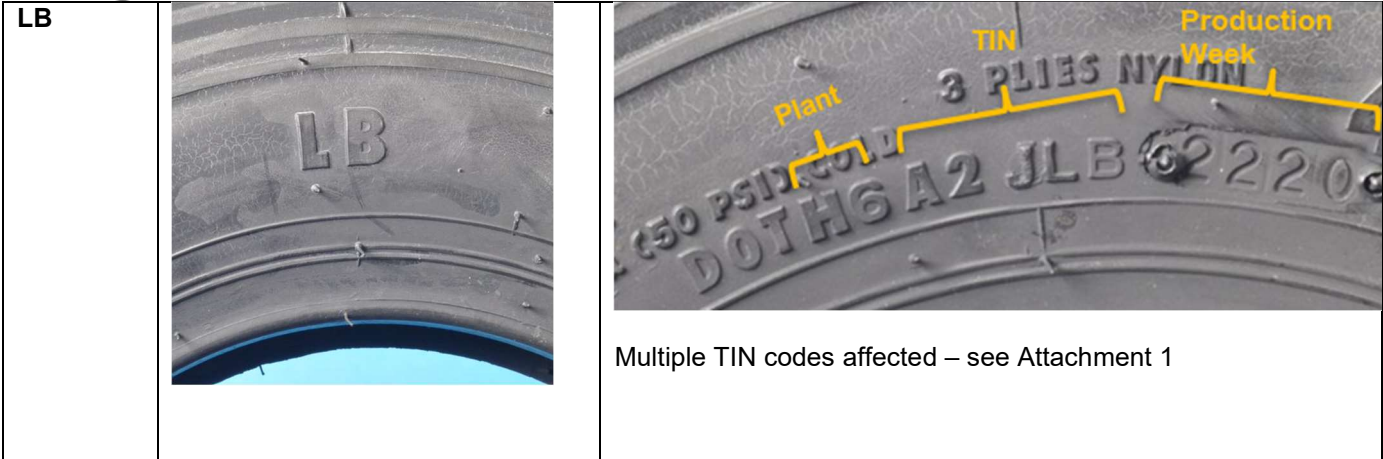
Note: No other tire sizes, production periods or product lines are affected.

Marketing Line	Article No.	Size / Service Description	DOT Plant + TIN codes	Affected DOT production weeks
TKC80	02071390000	120/90-17 M/C 64S TT TKC80 M+S	H6 LD CHJ	0119 - 1722
TKC80	02070510000	5.10-17 M/C 67S TT TKC80 M+S	H6 LJ CHJ	0119 - 1722
TKC80	02070680000	3.25-18 M/C 59S TT TKC80 M+S	H6 YY CHJ	0119 - 1722
TKC80	02001230000	4.00-18 M/C 64R TT TKC80 M+S	H6 Y2 CHJ	0119 - 1722
TKC80	02001420000	120/90-18 M/C 65R TT TKC80 M+S	H6 1D CHJ	0119 - 1722
TKC80	02070800000	3.50-18 M/C 62S TT TKC80 M+S	H6 Y1 CHJ	0119 - 1722
TKC80	02400830000	120/70-19 M/C 60Q TL TKC80 M+S	H6 2X KHJ	0119 - 1722
TKC80	02072220000	3.00-21 M/C 51S TT TKC80 M+S	H6 24 CHJ	0119 - 1722
TKC80	02071430000	90/90-21 M/C 54S TT TKC80 M+S	H6 LL CHJ	0119 - 1722
TKC80	02471440000	90/90-21 M/C 54T TL TKC80 M+S	H6 LL CHJ	0119 - 1722
TKC80	02072000000	2.50-21 M/C 48S TT RF TKC80 M+S	H6 25 CHJ	0119 - 1722
TKC80	02072100000	2.75-21 M/C 52S TT RF TKC80 M+S	H6 23 CHJ	0119 - 1722
ContiGo!	02400360000	130/90-17 M/C 68H TL ContiGo!	H6 H8 VDE	0119 - 1722
ContiGo!	02400370000	130/90-17 M/C 68V TL ContiGo!	H6 H8 VDE	0119 - 1722
ContiGo!	02400240000	110/70-17 M/C 54H TL ContiGo!	H6 WA VDE	0119 - 1722
ContiGo!	02400350000	130/70-17 M/C 62H TL ContiGo!	H6 VC VDE	0119 - 1722
ContiGo!	02400480000	130/80-17 M/C 65H TL ContiGo!	H6 69 VDE	0119 - 1722
ContiGo!	02400450000	110/80-17 M/C 57V TL ContiGo!	H6 LO VDE	0119 - 1722
ContiGo!	02400380000	140/80-17 M/C 69V TL ContiGo!	H6 FV VDE	0119 - 1722
ContiGo!	02400150000	4.00-18 M/C 64H TL ContiGo!	H6 Y2 VDE	0119 - 1722
ContiGo!	02400190000	100/90-18 M/C 56H TL ContiGo!	H6 XA VDE	0119 - 1722
ContiGo!	02400200000	100/90-18 M/C 56V TL ContiGo!	H6 XA VDE	0119 - 1722
ContiGo!	02400210000	120/90-18 M/C 65H TL ContiGo!	H6 ID VDE	0119 - 1722
ContiGo!	02400220000	120/90-18 M/C 65V TL ContiGo!	H6 ID VDE	0119 - 1722
ContiGo!	02400270000	110/80-18 M/C 58V TL ContiGo!	H6 XE VDE	0119 - 1722
ContiGo!	02400400000	130/70-18 M/C 63H TL ContiGo!	H6 U2 VDE	0119 - 1722
ContiGo!	02400410000	130/80-18 M/C 66V TL ContiGo!	H6 1F VDE	0119 - 1722
ContiGo!	02400420000	150/70-18 M/C 70V TL ContiGo!	H6 XD VDE	0119 - 1722
ContiGo!	02400260000	90/90-18 M/C 51H TL ContiGo!	H6 Y8 VDE	0119 - 1722
ContiGo!	02400390000	110/90-18 M/C 61H TL ContiGo! Rear	H6 1A VDE	0119 - 1722
ContiGo!	02400280000	110/90-18 M/C 61H TL ContiGo! Front	H6 1A VDE	0119 - 1722
ContiGo!	02400290000	100/90-19 M/C 57H TL ContiGo!	H6 M5 VDE	0119 - 1722
ContiGo!	02400300000	100/90-19 M/C 57V TL ContiGo!	H6 M5 VDE	0119 - 1722
ContiGo!	02400140000	3.25-19 M/C 54H TL ContiGo!	H6 IN VDE	0119 - 1722
ContiGo!	02400230000	120/80-16 M/C 60V TL ContiGo!	H6 LF VDE	0119 - 1722
ContiGo!	02400330000	130/90-16 M/C 67H TL ContiGo!	H6 XK VDE	0119 - 1722
ContiGo!	02400340000	130/90-16 M/C 67V TL ContiGo!	H6 XK VDE	0119 - 1722
ContiGo!	02400320000	3.00-21 M/C 51H TL ContiGo!	H6 26 VDE	0119 - 1722
ContiGo!	02400310000	90/90-21 M/C 54H TL ContiGo!	H6 LL VDE	0119 - 1722
K62	02002610000	3.00-10 M/C 50J TT RF K62 WW	H6 BE KFB	0119 - 1722
K62	02200110000	3.50-10 M/C 59J TL K62	H6 BF KFB	0119 - 1722
K62	02200120000	3.50-10 M/C 59J TL K62 WW	H6 BF KFB	0119 - 1722
LB	02002450000	4.00-8 M/C 55J TT LB	H6 A2 JLB	0119 - 1722

LB	02002460000	4.00-8 M/C 55J TT LB WW	H6 A2 JLB	0119 - 1722
LB	02002350000	3.50-8 M/C 46J TT LB	H6 AT JLB	0119 - 1722
LB	02002360000	3.50-8 M/C 46J TT LB WW	H6 AT JLB	0119 - 1722

Attachment no. 2 – how to identify Tire line, DOT Plant + TIN Code and Production Week

Tire Line	Tire Line Sidewall Picture	Examples of DOT Plant and TIN Code
TKC80		 <p>Multiple TIN codes affected – see Attachment 1</p>
ContiGo!		 <p>Multiple TIN codes affected – see Attachment 1</p>
K62		 <p>Multiple TIN codes affected – see Attachment 1</p>



Attachment no. 3 – how to identify the specific article

Because there are several articles affected which have the same Size + same DOT Plant and TIN Code on the tire sidewall, it is important to identify the specific article to replace/reimburse them correctly.

Based on the Size and Service Description

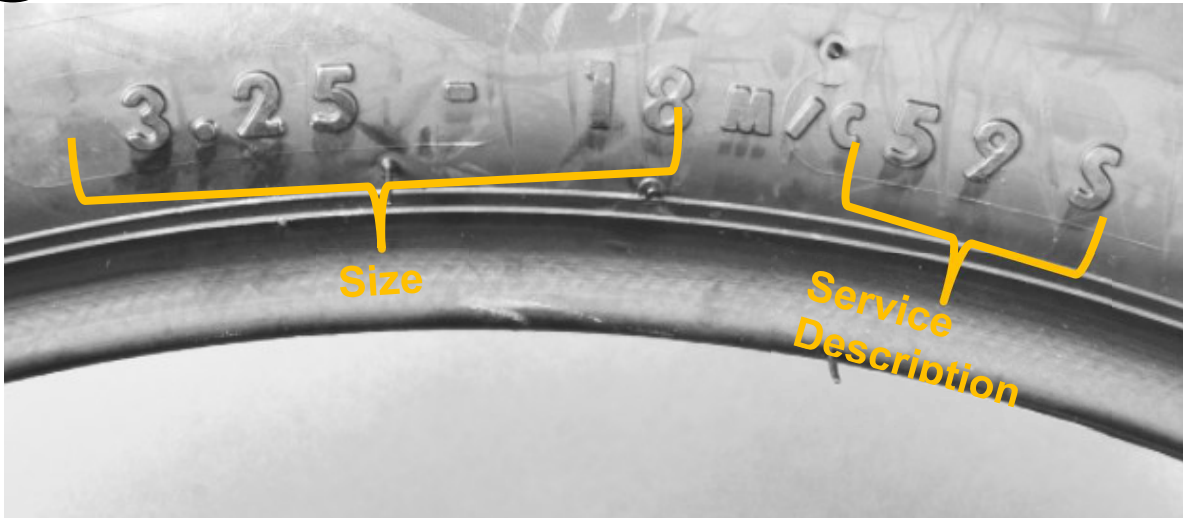
First, check besides the Size of the tire also the corresponding Service Description (Load Index + Speed Symbol). Please see examples below.

Example 1: Metric Tire Size



According to the example: Size **130/90-17**, Service Description (Load Index + Speed Symbol) **68V**

Example 2: Imperial Tire Size



According to the example: Size **3.25-18**, Service Description (Load Index + Speed Symbol) **59S**

Based on the Sidewall Color

The tire lines K62 and LB are available with black sidewalls (standard) as well as with white sidewalls. All tires with the white sidewalls have the designation ending with "WW" in the table in the Attachment no. 1.