

TECHNICAL INSTRUCTIONS

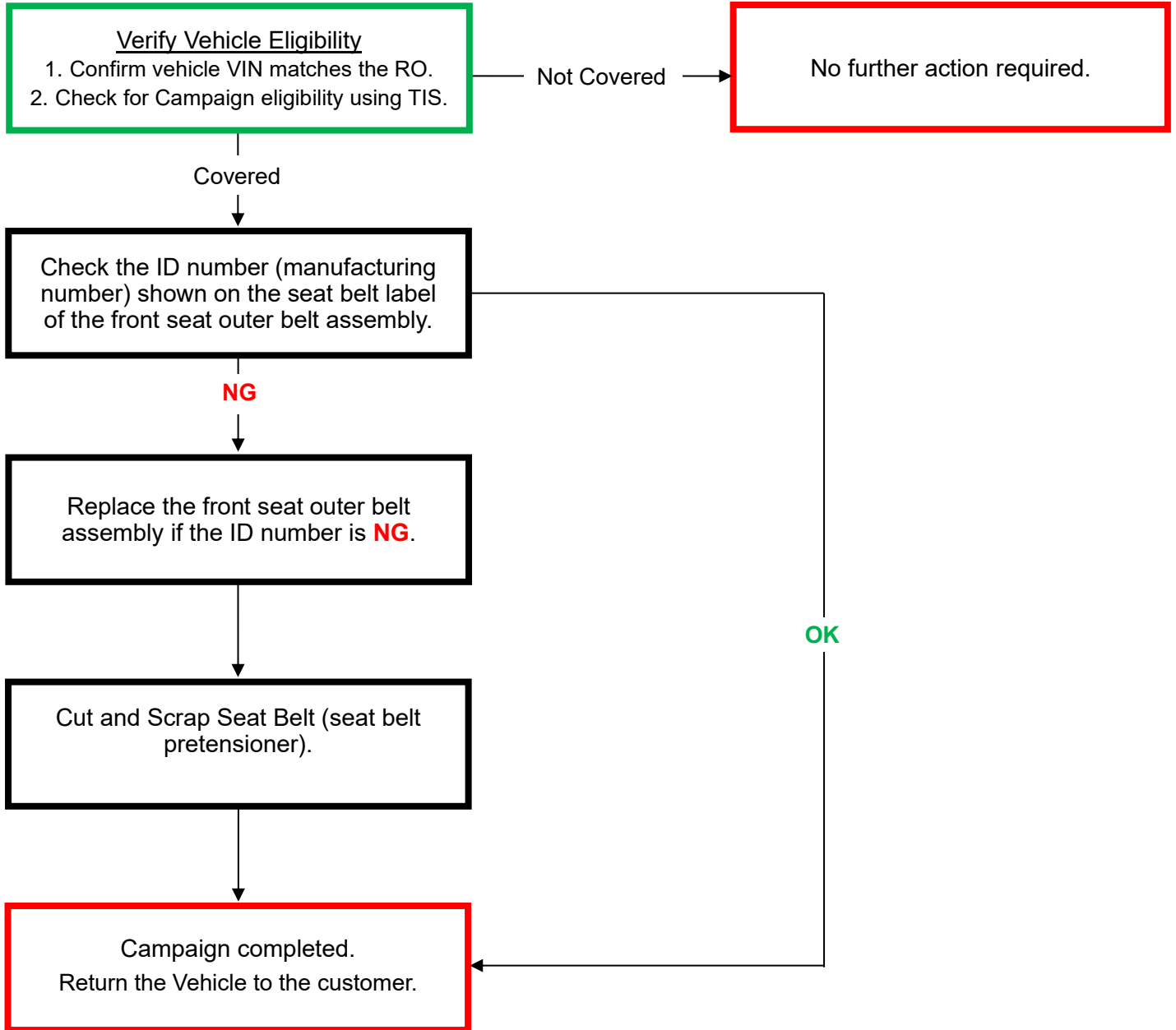
FOR

**FRONT SEAT OUTER BELT ASSEMBLY
INSPECTION AND REPLACEMENT**

**2002-2006 MODEL YEAR SC430
2004 MODEL YEAR RX330
2007 MODEL YEAR RX350**

I. OPERATION FLOW CHART

The flow chart is for reference only. **DO NOT** use it in place of the full technical instructions. Follow **ALL** steps as outlined in the full technical instructions to confirm the campaign is completed correctly.



II. IDENTIFICATION OF AFFECTED VEHICLES

1. CHECK VEHICLE FOR CAMPAIGN ELIGIBILITY

- a) Compare the vehicles VIN to the VIN listed on the Repair Order to ensure they match.
- b) Check the TIS Vehicle Inquiry System to confirm the VIN is involved in this Campaign, and that it has not already been completed.

HINT:

TMNA warranty will not reimburse dealers for repairs completed on vehicles that are not affected or were previously completed, even by another dealer.

III. PREPARATION

A. PARTS (IF NG)

| Part Number | Part Description | Quantity | Model | Color |
|----------------|-----------------------------------|----------|-------|-------|
| 73220-48052-A0 | Front Seat Outer Belt Assembly LH | 1 | RX330 | IVORY |
| 73220-48052-A0 | Front Seat Outer Belt Assembly LH | 1 | RX350 | IVORY |
| 73220-24131-A0 | Front Seat Outer Belt Assembly LH | 1 | SC430 | ECRU |
| 73210-24171-A0 | Front Seat Outer Belt Assembly RH | 1 | SC430 | ECRU |

Parts are only required if the inspection result is NG.

Please refer to Electronic Parts Catalog to obtain the Part Number according to the VIN.

B. TOOLS & EQUIPMENT (IF INSPECTION RESULT NG)

- Standard hand tools
- Torque wrench
- Techstream

C. MATERIALS (IF NG)

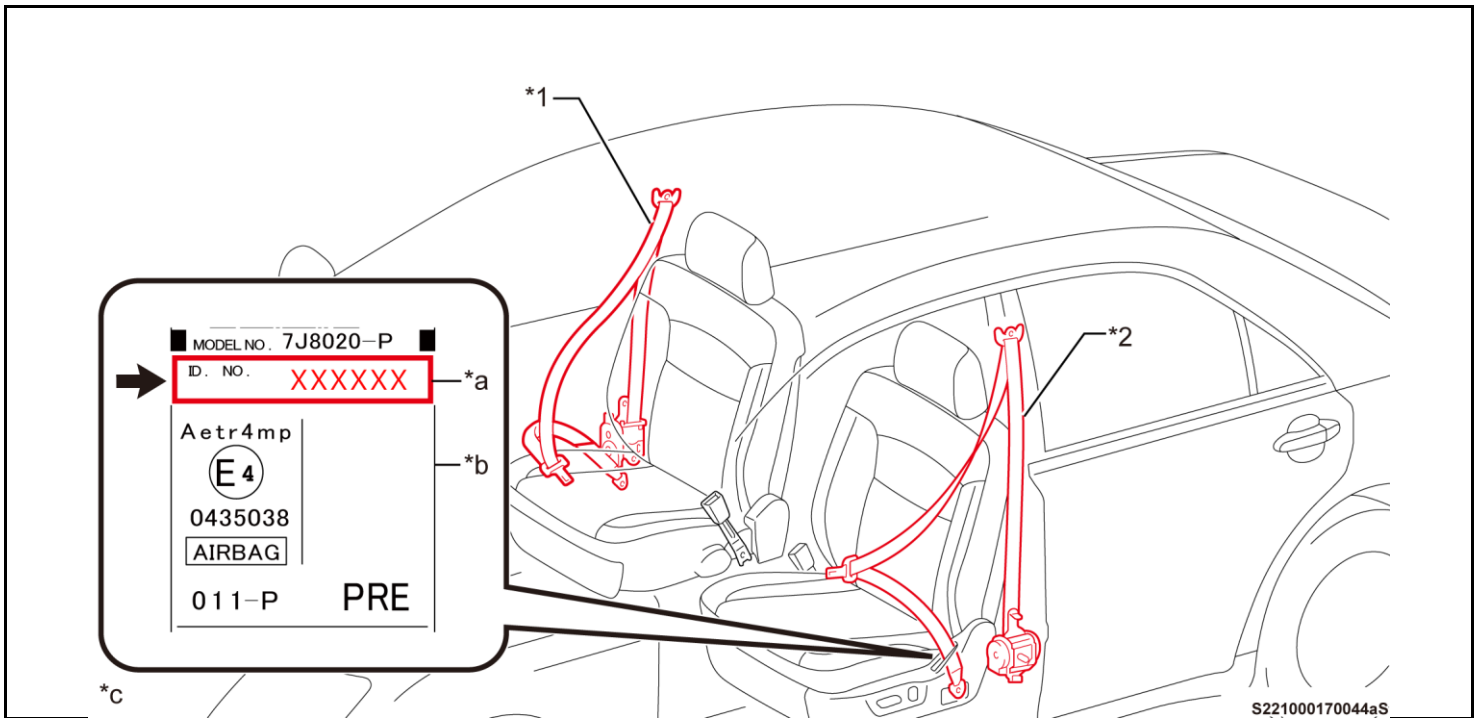
- Protective gloves
- Protective tape
- Marker pen

IV. WORK PROCEDURE TABLE OF CONTENTS

| | |
|---|--------------|
| INSPECT FRONT SEAT OUTER BELT ASSEMBLY..... | SECTION V |
| COMPONENTS (IF NG) | SECTION VI |
| REPLACE FRONT SEAT OUTER BELT ASSEMBLY (IF NG) | SECTION VII |
| DESTROY OR SCRAP FRONT SEAT OUTER BELT ASSEMBLY (SEAT BELT PRETENSIONER) | SECTION VIII |
| APPENDIX..... | SECTION IX |

BACKGROUND

A component in the subject front seat belt assemblies may not have been manufactured properly and may cause the seat belt to not operate as designed. This can increase the risk of an injury in the event of certain types of crashes.



| | | | |
|----|--|----|-----------------------------------|
| *1 | Front Seat Outer Belt Assembly RH | *2 | Front Seat Outer Belt Assembly LH |
| *a | ID Number (Manufacturing Number) | *b | Label |
| *c | The label and vehicle shown are examples and will differ from the actual ones. | - | - |

V. INSPECT FRONT SEAT OUTER BELT ASSEMBLY

1. IDENTIFY APPLICABLE SEAT BELT

- a) Look at the table of the VINs below to identify which front seat outer belt assembly must be inspected.

[Seat Belts that Need to Be Inspected]

● Check - No need to check

| VIN | Model | Front Seat Outer Belt Assembly | |
|-------------------|-------|--------------------------------|---------------|
| | | Front LH Seat | Front RH Seat |
| JTHFN48Y120023799 | SC430 | - | ● |
| JTHFN48Y420029435 | SC430 | ● | - |
| JTHFN48Y030041292 | SC430 | ● | - |
| JTHFN48Y430039285 | SC430 | ● | - |
| JTJGA31U540011108 | RX330 | ● | - |
| JTJGK31U170008207 | RX350 | ● | - |

2. RECORD SEAT POSITIONS

3. PROVIDE WORKSPACES

- a) Move the front seat with the seat belt to be checked to the foremost position.

4. CHECK ID NUMBER SHOWN ON SEAT BELT LABEL

- a) Check the **6-digit numeric** ID number (manufacturing number) shown on the seat belt label of the front seat outer belt assembly.

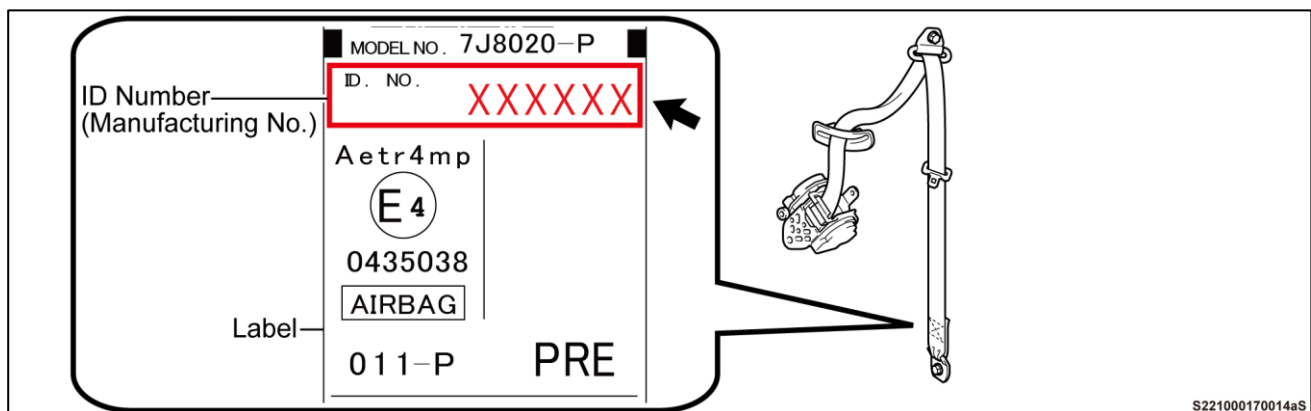
OK/NG Criteria: See the next page.

NOTICE:

- The label design and the ID number location vary depending on the vehicle model or the front seat outer belt assembly's part number. Regardless of the vehicle model or the part number, read the 6-digit numeric ID number shown in the [ID NO.] field of the seat belt label to see if replacement is necessary.
- Refer to the separately provided ID number identification list as needed.

HINT:

The seat belt label can be found around the seat belt's floor anchor.



S221000170014aS

[Criteria]

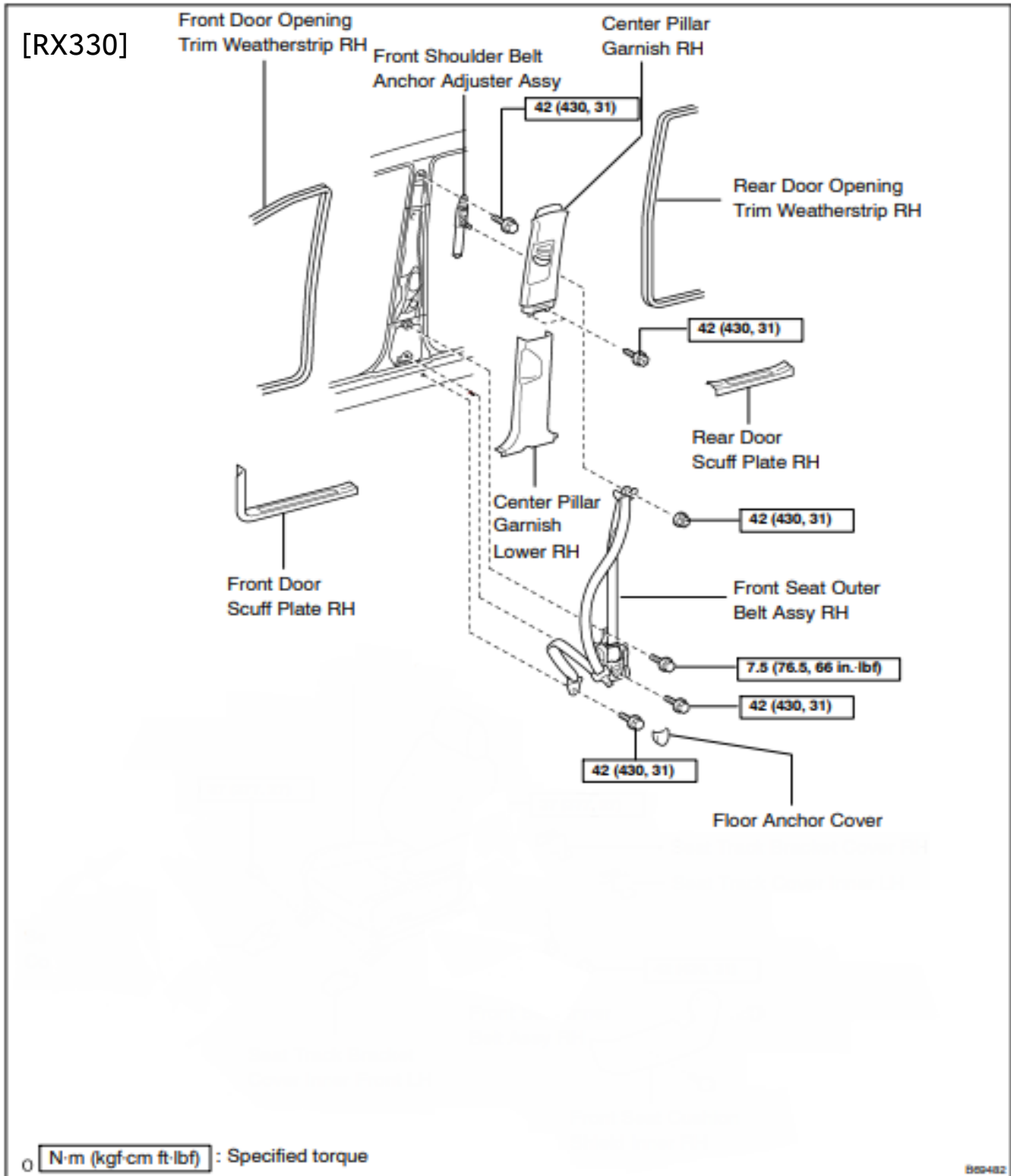
RX330 & RX350:

| Judgment | Part Number | ID Number (Manufacturing Number) | Proceed to |
|----------------------------------|------------------|-------------------------------------|---|
| NG | 73220-48052-A0 | 376452 | Replace the Front Seat Outer Belt Assembly LH. Go to "VI. COMPONENTS (IF INSPECTION RESULT NG)." |
| OK | Other than above | | Record inspection results. |
| ID number is illegible | | | Replace the Front Seat Outer Belt Assembly if the ID number is illegible. Go to "VI. COMPONENTS (IF INSPECTION RESULT NG)." |
| Label has been detached and lost | | | Replace the Front Seat Outer Belt Assembly if the seat belt label has been detached and lost. Go to "VI COMPONENTS (IF INSPECTION RESULT NG)." |

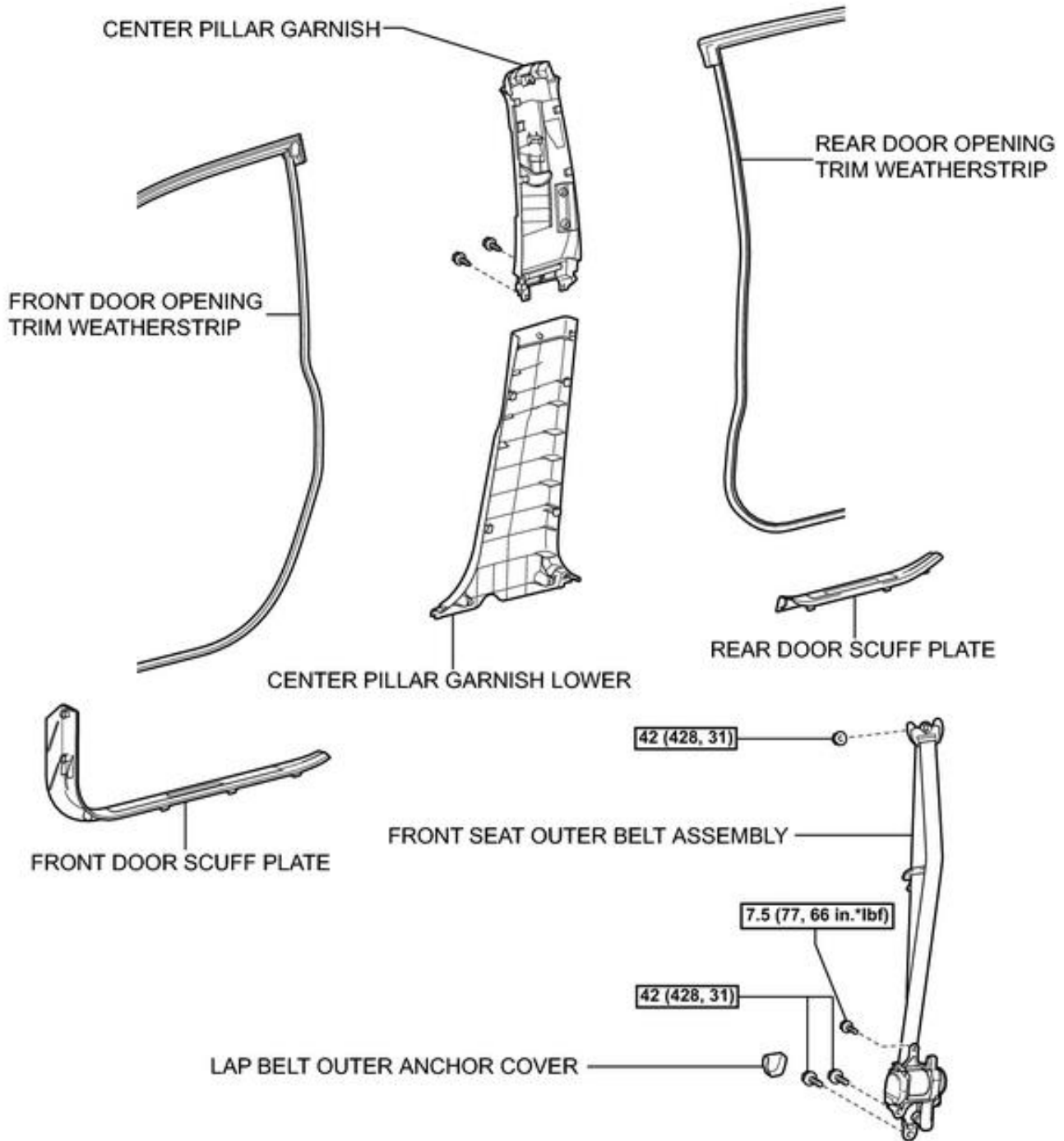
SC430:

| Judgment | Part Number | ID Number (Manufacturing Number) | Proceed to |
|----------------------------------|------------------|-------------------------------------|---|
| NG | 73220-24131-A0 | 379132 | Replace the Front Seat Outer Belt Assembly LH. Go to "VI COMPONENTS (IF INSPECTION RESULT NG)." |
| | 73220-24131-A0 | 380526 | |
| | 73210-24171-A0 | 381829 | Replace the Front Seat Outer Belt Assembly RH. Go to "VI COMPONENTS (IF INSPECTION RESULT NG)." |
| OK | Other than above | | Record inspection results. |
| ID number is illegible | | | Replace the Front Seat Outer Belt Assembly if the ID number is illegible. Go to "VI COMPONENTS (IF INSPECTION RESULT NG)." |
| Label has been detached and lost | | | Replace the Front Seat Outer Belt Assembly if the seat belt label has been detached and lost. Go to "VI COMPONENTS (IF INSPECTION RESULT NG)." |

VI. COMPONENTS (IF NG)



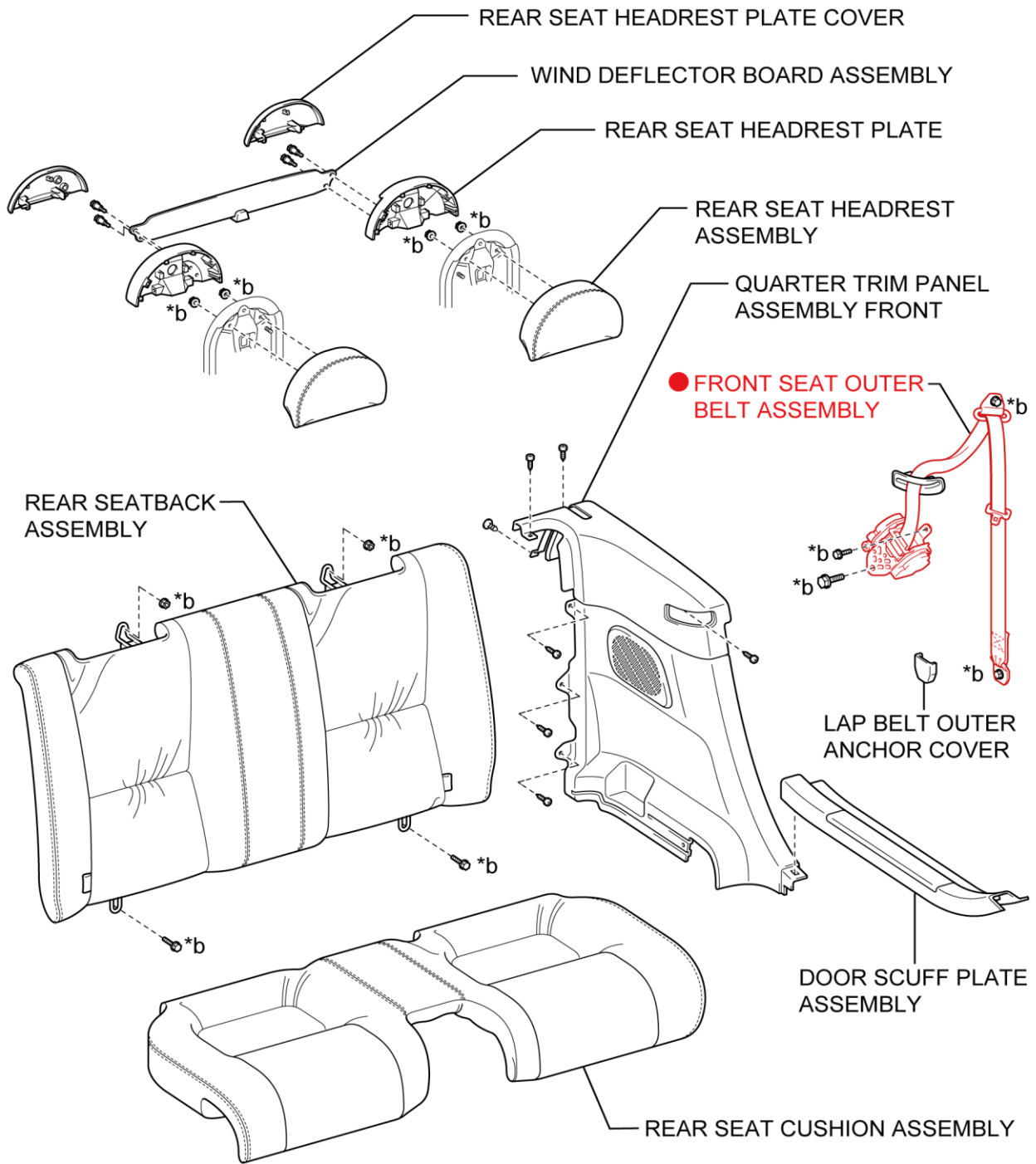
[RX350]



N*m (kgf*cm, ft.*lbf) : Specified torque

P

[SC430]



*a
● : Component to be replaced

S221000170031aS

| | | | |
|----|--|----|---|
| *a | The illustration shows an example of the LH side components. | *b | Refer to the repair manual for the tightening torque. |
|----|--|----|---|

VII. REPLACE FRONT SEAT OUTER BELT ASSEMBLY (IF INSPECTION RESULT **NG**)

1. CHECK FOR DTCs

- a) Check current DTCs to obtain current vehicle condition.
- b) REPLACE FRONT SEAT OUTER BELT ASSEMBLY

Referring to the repair manual, replace the front seat outer belt assembly with the **NEW** one.

[TIS - Lexus 2002 SC430 Repair Manual \(RM844U\) \(toyota.com\)](#)

[TIS - Lexus 2003 SC430 Repair Manual \(RM962U\) \(toyota.com\)](#)

[TIS - Lexus 2004 RX330 Repair Manual \(RM1082U\) \(toyota.com\)](#)

[TIS - Lexus 2007 RX350 Repair Manual \(RM0270U\) \(toyota.com\)](#)

NOTICE:

Carefully read the cautions written in the repair manual and perform the written instructions correctly.

2. RESTORE VEHICLE

3. CONFIRM NO DTC SET DURING REPLACEMENT

◀ VERIFY REPAIR QUALITY ▶

- Check Torque of Seat Belt Bolts
- Check Seat belt loosens and retracts correctly.
- Ensure tension reducer connector is connected and pretensioner connector tab is locked.
- If you have any questions regarding this equipment recall, please contact your regional representative.

VIII. DESTROY OR SCRAP FRONT SEAT OUTER BELT ASSEMBLY (SEAT BELT PRETENSIONER)

A. PARTS DISPOSAL

- a) The outer belt assembly removed from the vehicle will be destroyed and scrapped by the dealers (seat belt pretensioner). Cut seat belt strap and use appropriate hazardous material disposal of seat belt due to seat belt pretensioner.

In accordance with Federal Regulations, please make sure all recalled parts (original parts) removed from the vehicle are disposed of in a way they will not be reused, **unless requested for parts recovery return.**

IX. APPENDIX

B. CAMPAIGN DESIGNATION DECODER

