

RECALL: NHTSA 21V928

Page 1 of 4

SUBJECT: Incorrect Tire Size on Placard Label and Tire Pressure Label

APPLIES TO: Roadtrek: 2021 Zion Slumber and Play models

CONDITION: Placard and Tire Pressure labels incorrectly state the tire size as **LT245/75R16E**

CORRECTION: Placard label and Tire Pressure label need to be replaced with new labels that state the tire size as **LT 225/75R16 E**

Instructions

PLEASE READ THE ENTIRE BULLETIN BEFORE PROCEEDING WITH ANY WORK. IF THERE ARE ANY CONCERNS WITH THE PROCEDURES CONTAINED IN THIS DOCUMENT, CONTACT ROADTREK INC AT dealersupport@roadtrekinc.com OR 1-888-762-3873.

PART/SERVICE INFORMATION:

Labor Time: 0.25 hrs

Qty.	Part Number	Description
1		Placard Label
1		Tire Pressure Label

Note: Safety glasses and safety shoes required.

RECALL: NHTSA 21V928

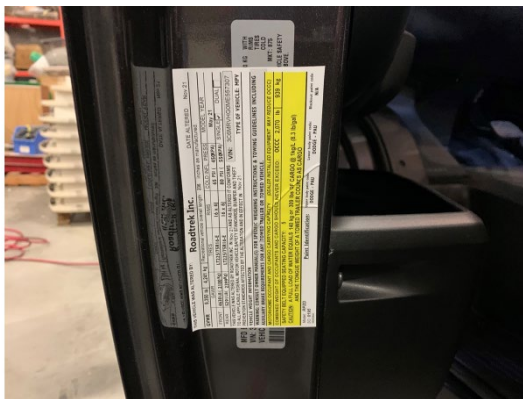
Page 2 of 4

STEP-BY-STEP INSTRUCTIONS:

STEP 1: Find location of the Placard label on the driver's door and wipe the surface clean with a damp cloth and allow to dry.



STEP 2: Peel off the backing of the new placard label and apply it over top of the original label with the same orientation



RECALL: NHTSA 21V928

Page 3 of 4

STEP 3: Find location of the tire pressure label on the B pillar of the driver side and wipe the surface clean with a damp cloth and allow to dry.



STEP 4: Peel off the backing of the new tire pressure label and apply it over top of the original label with the same orientation.

