



## INSTRUCTIONS TO PERFORM RECALL CAMPAIGN 164

---

<b><u>Models Affected</u></b>	2019	Travato	
	2020	Travato	
	2021	Travato	Boldt
	2022	Travato	Boldt

**Tools and Parts Required**

- Screw Gun
- #2 Phillips screw tip
- Torque Wrench with fittings to torque
  - 9/16" nut
  - 17mm nut
  - 13mm nut

(torque settings are given in both ft/lb and in/lb)

NOTE: Only use the parts supplied in recall kit RC7649-22-764 to complete this repair.

It is important to follow these instructions in the order they are given. These instructions contain 7 pages, work through all steps to ensure a complete remedy is performed. Familiarize yourself with the model you are working on before proceeding.

**Ensure all power has been disabled before proceeding**

**Failing to power the system down before performing work can result in serious injury.**

### Disable Volta System

## CRITICAL SAFETY STEP

Failing to power the system down before performing work can result in serious injury.

- If not already done, follow the steps to disable the Volta system alternator control. If this has already been completed, proceed to the next applicable step.
- Power down Volta system using the button located near the state of charge gauge. Depress button to shut off the system. It may take a moment for the green light to shut off.
- Gauge will return to zero if properly shut down.



- Based on the model you are working on, locate the alternator control module and positive bus bar.

### Travato 259KL

- On the 259KL access is located under the passenger side bed top. Open the access top and remove 4 screws holding in plastic bin.



### Travato 259GL

- On the 259GL, access is located on the center of bed top. The metal bed frame may need to be removed to remove access cover.



## INSTRUCTIONS TO PERFORM RECALL CAMPAIGN 164

### Boldt Q70BL

- On the Q70BL, access is located under the passenger side bed top. The metal bed frame may need to be removed to get clearer access.



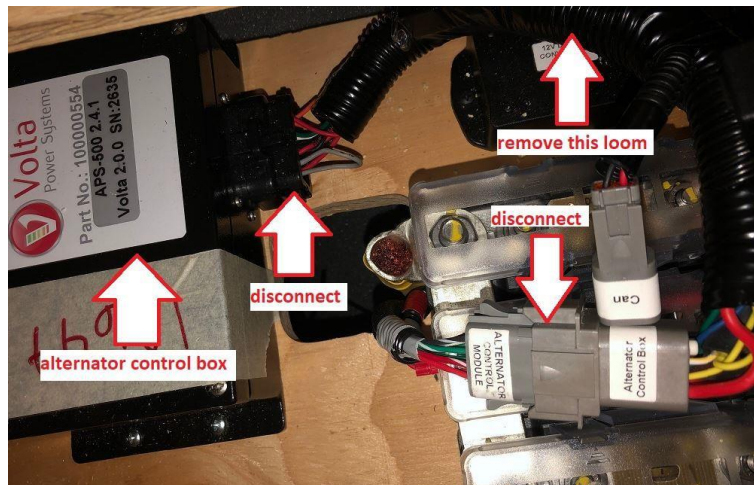
### Boldt Q70KL

- On the Q70KL, access is located under the passenger side bed top. The metal bed frame may need to be removed to get clearer access.



### Travato and Boldt

- Based on the model you are working on, locate the Volta alternator control module and disconnect the harness at both ends, remove the harness, and retain for return to Winnebago.



Picture shows the Travato 259KL, orientation is different on other floor plans, connections are the same.

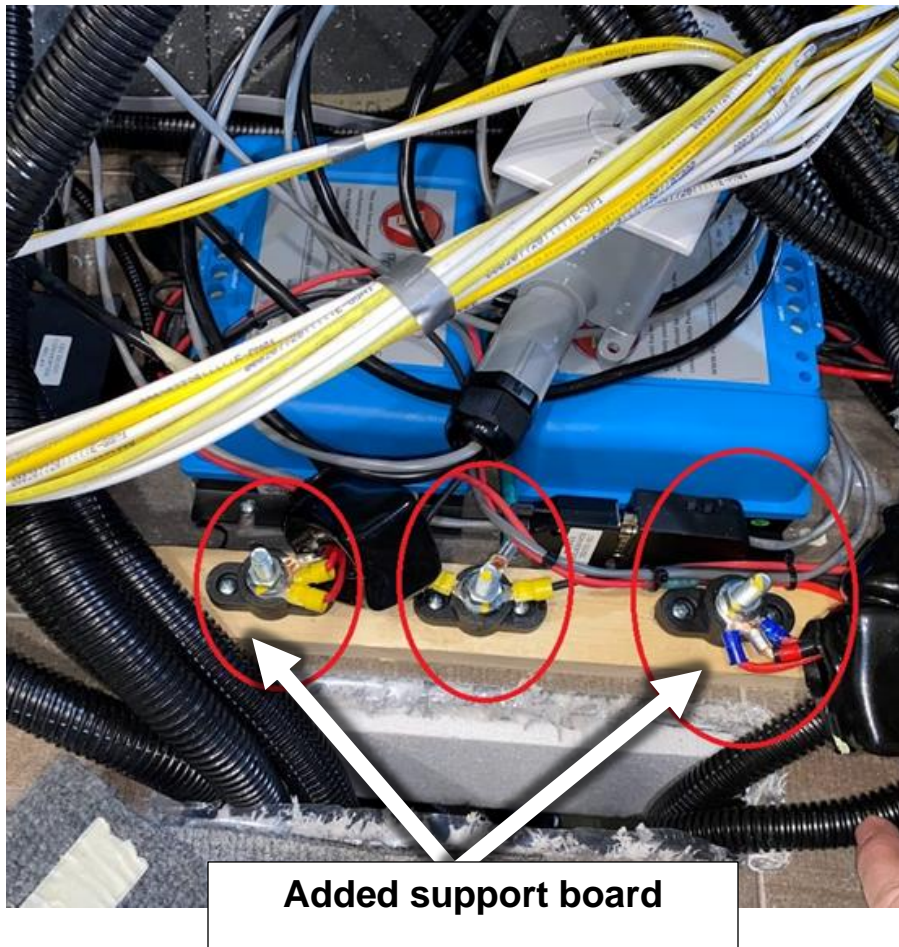


### Recall Remedy

#### Travato 259KL Isolator Stud Support

This page is for the Travato 259KL only. If you are working on a different floor plan, proceed to page 5 to continue with the recall remedy.

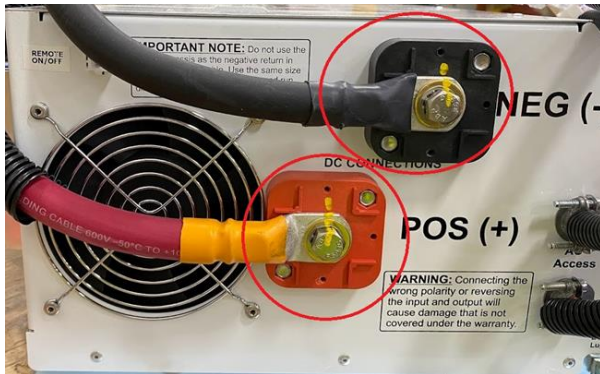
- With the system disabled, locate, and remove the isolator studs from the floor.
- Using the supplied support board, apply one strip of double-sided tape along the length.
- Install the support board along the floor cutout as shown, secure at each end with supplied screws.
- Reinstall the isolator studs on the support board.
  - If you needed to detach the wires, place them back on the same studs they were removed from, stacking them in order of eyelet size largest on the bottom to smallest on top.
- Torque the 13mm nuts to 14 ft/lb **-or-** 168 in/lb.



## INSTRUCTIONS TO PERFORM RECALL CAMPAIGN 164

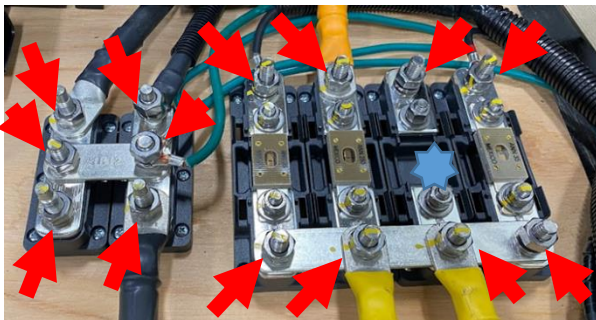
- Inspect all Volta System electrical connections, ensuring bolts are properly torqued, and eyelets are stacked in order of largest on the bottom to smallest on top.

### Battery Cables at the Inverter



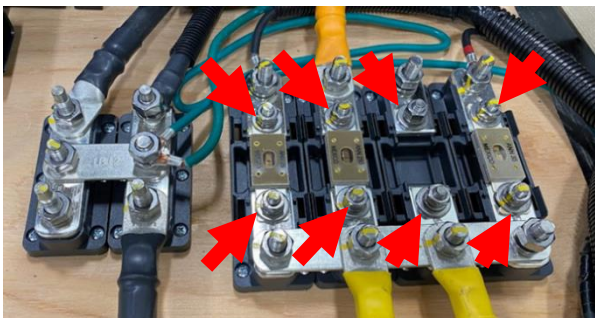
(Qty. 2) 9/16" nut, torque to 14 ft/lb -or- 168 in/lb

### Cables at the Bus Bar



(Qty. 14) 17mm nut, torque to 15.5 ft/lb -or- 186 in/lb

### Fuses at the Bus Bar



(Qty. 8) 13mm nut, torque to 8 ft/lb -or- 96 in/lb If 250 AMP fuse is missing, it will be added in a future step.

### Isolator Studs

(Travato 259KL was done in a previous step)



(Qty. 3) 13mm nut, torque to 14 ft/lb -or- 168 in/lb

### Volta Power Pack Cables



(Qty. 4) 9/16" nut, torque to 14 ft/lb -or- 168 in/lb

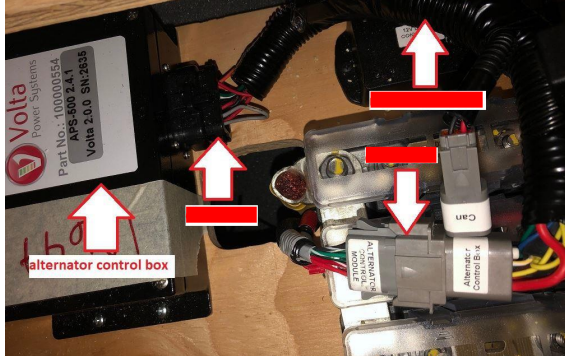
- o **All connections must be verified**, if you need help locating these connections contact:  
**Winnebago Technical Assistance at 1-866-653-4329 for further instructions.**

- Inspect Volta System wiring from the secondary alternator to the alternator control box.
  - o **If any damage is found, or the wires appear to have been hot**, contact:  
**Winnebago Technical Assistance at 1-866-653-4329 for further instructions.**



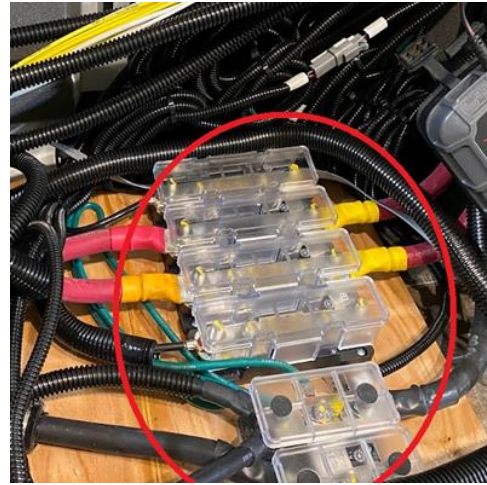
## INSTRUCTIONS TO PERFORM RECALL CAMPAIGN 164

- Using the supplied replacement harness, reconnect at the alternator control box and at the alternator control module harness.



Picture shows the Travato 259KL, orientation is different on other floor plans, connections are the same.

- Install the 250AMP Fuse in the open location of the fuse block.



- If the unit was previously disabled, locate the removed harness and 250AMP fuse in the overhead above the bench seat.

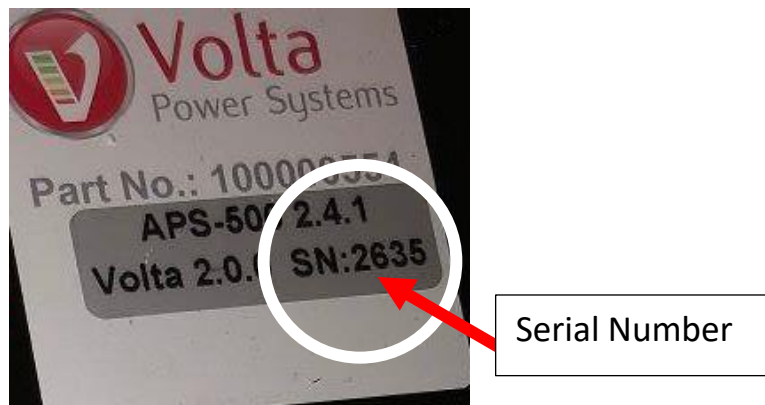
- Torque the 13mm nuts to 8 ft/lb **-or-** 96 in/lb

- **Retain the previously removed harness, label it with your existing yellow warranty tags clearly identifying the serial number of the alternator control module it was removed from and return it to Winnebago.**



## INSTRUCTIONS TO PERFORM RECALL CAMPAIGN 164

- After completion of the recall remedy, power the Volta system on to verify functionality. Wait approximately 60 seconds to ensure the system stays on. If there are any issues with the system at this point, please contact Winnebago Technical Assistance at 1-866-653-4329.
- Return the removed harness to Winnebago. Ensure the harness is labeled with your existing yellow warranty tags, clearly identifying the serial number of the alternator control module it was removed from.



- Label the outside of box with your existing orange warranty return parts label and mark the box as “Recall Parts” using a black permanent marker.
  - Send to:

Warranty Returns – Attn. SQA  
605 W Crystal Lake Rd  
Forest City, IA 50436