



Service Bulletin

101 East Seneca Bancroft, IA 50517

Bulletin #: 9152021

Date: 9-15-2021

Prepared by: Steve Vaske

Phone # 515-885-2398

Page: 1

Subject:

Inform Aluma dealers and owners that have 8214HSTILT trailers and have front latch catch issues with the Rivet Nut coming loose from the front frame.

Solution: Use .5" dia X 4.5" long bolt to secure the latch through the front frame and plank support tube. Aluma will allow 1 hours of labor to be submitted for installation of retrofit.

Models and VIN Numbers (if applicable) Affected:

8214HSTILT – Retrofit starting with VIN number 1YGHD1414NB233649 – manufactured date 2-3-2021

Retrofit kit: To be ordered from Aluma Service Department – at no charge

Note: The following parts are required for update and do not substitute any of these parts.

Quantity	1	Description:	locking plate with holes
Quantity	2	Description:	.5" x 4.5" L Stainless Steel Hex Cap Screws
Quantity	2	Description:	.5" Steel Flat Washers
Quantity	2	Description:	.5" Nylon Insert Lock Nuts

Retrofit Instructions:

Warning: Always use proper PPEs when assembling and disassembling product.

1. Park trailer on hard level surface. Place wheel chocks in front of and behind both tires. Then unlatch the tilt latch.
2. Then lift front of trailer to put trailer in tilted position.
3. Then weld 1" on each side of the tongue slot on bottom side of trailer. **See Figure 1**
4. Remove latch catch plate on front frame of trailer using a 7/32" Allen wrench.
5. Using a drill with a 17/32" drill bit, drill out the two threaded Rivet Nut. Part of the Rivet Nut shell will remain in the front frame of the trailer. **See Figure 2**
6. Then using the same drill and drill bit, drill approximately 4"-4.5" inward in the same holes you removed the Rivet Nut from. You should drill through three walls of material. **See Figure 3**
7. Reassemble using the new latch catch plate and provided hardware, of 2 - .5" X 4.5" stainless steel bolts, .5" Nylon Insert Lock Nuts, and .5" flat washer. Place both bolts through the latch catch and then into the holes you previously drilled out. Then place one washer on each bolt and then the Nylon Insert Lock Nuts. **See Figure 4**
8. Before tightening down make sure the latch catch plate is flush with the notch cut in the front frame. Then tighten bolts using 3/4" socket on an impact wrench and a 3/4" wrench on the nut.
9. Lower trailer bed and ensure that latch still functions properly. If latch doesn't work on the catch, then adjust the latch catch until it functions properly and ensure nuts and bolts are properly tightened. **See Figure 5**
10. Verify work has been completed and hardware is secured. Then remove wheel chocks.



Service Bulletin

101 East Seneca Bancroft, IA 50517	Bulletin #: 9152021	Date: 9-15-2021
Prepared by: Steve Vaske	Phone # 515-885-2398	Page: 2

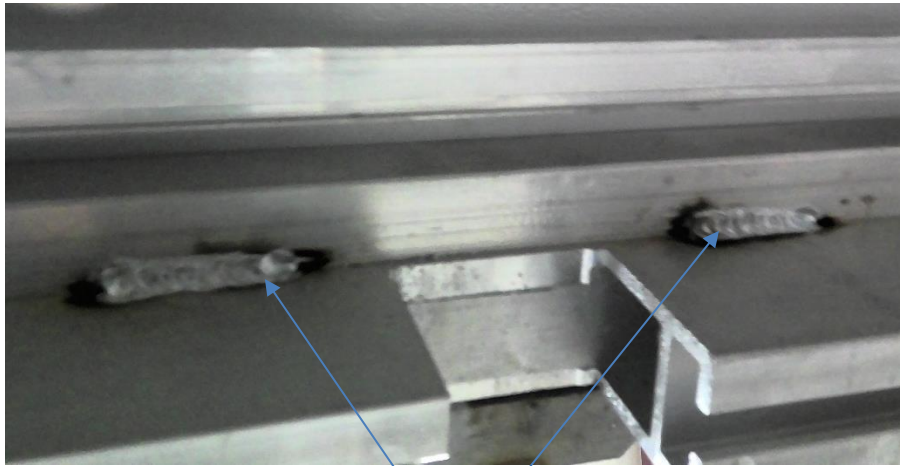


Figure 1

Weld 1" L On each side of tongue opening



Figure 2

Rivet Nut shell



Service Bulletin

101 East Seneca Bancroft, IA 50517	Bulletin #: 9152021	Date: 9-15-2021
Prepared by: Steve Vaske	Phone # 515-885-2398	Page: 3



Figure 3

Drill through 1 leg and both walls of tube 2 places



Figure 4

Items included from Aluma
for Bulletin 9152021



Service Bulletin

101 East Seneca Bancroft, IA 50517

Bulletin #: 9152021

Date: 9-15-2021

Prepared by: Steve Vaske

Phone # 515-885-2398

Page: 4



Figure 5

Adjust if necessary



Photo of completed front and back of updates