 HYUNDAI Technical Service Bulletin	GROUP Recall	NUMBER 21-01-063H
	DATE October, 2021	MODEL(S) Accent (HC), Azera (HG), Sonata (LFa), Sonata Hybrid (LF HEV), Sonata Plug-in Hybrid (LF PHEV)
SUBJECT: TRUNK LATCH BASE REPLACEMENT (RECALL 208)		

★ IMPORTANT

***** Retail Vehicles *****

As required by federal law, dealer must not deliver new vehicle for sale or for lease to customers until all open recalls have been performed. Dealers should also perform all open recalls on used vehicles, demo, and rental vehicles prior to placing them into customer use and whenever an affected vehicle is in the shop for any maintenance or repair.

When a vehicle arrives at the Service Department, access Hyundai Motor America's "Warranty Vehicle Information screen (VIS)" via WEBDCS to identify open Campaigns.

Description: On certain Accent (HC), Azera (HG), Sonata (LFa), Sonata Hybrid (LF HEV), and Sonata Plug-in Hybrid (LF PHEV) vehicles, the trunk latch pawl can thermally contract when exposed to high ambient temperatures. An attempt to release the pawl and open the trunk lid in this condition could result in damage to the pawl, preventing opening of the trunk lid through actuation of the emergency trunk release and presenting risk of injury to an occupant locked in the trunk. This bulletin describes the procedure to replace the trunk latch base with improved parts.

Applicable Vehicles:

Certain 2018 – 2020MY Accent (HC) vehicles produced from 9/8/2017 to 5/31/2019.
Certain 2016 – 2017MY Azera (HG) vehicles produced from 3/8/2016 to 11/21/2016.
Certain 2017 – 2018MY Sonata (LFa) vehicles produced from 5/2/2016 to 7/18/2018.
Certain 2016 – 2018MY Sonata Hybrid (LF HEV) vehicles produced from 3/2/2016 to 3/30/2018.
Certain 2017 – 2018MY Sonata Plug-in Hybrid (LF PHEV) vehicles produced from 5/12/2016 to 3/9/2018.

Parts Information:

Applicable Model(s)	Part Number	Part Name	Comments
Accent (HC)	81231-A7030QQH	Trunk lid latch base	N/A
Azera (HG) 2018MY Sonata (LFa) 2018MY Sonata Hybrid (LF HEV) 2018MY Sonata Plug-in Hybrid (LF PHEV)	81231-3V000QQH		Without valet locking switch
2017MY Sonata (LFa) 2016 – 2017MY Sonata Hybrid (LF HEV) 2017MY Sonata Plug-in Hybrid (LF PHEV)	81231-C1010QQH		With valet locking switch

Circulate To: General Manager, Service Manager, Parts Manager, Warranty Manager, Service Advisors, Technicians, Body Shop Manager, Fleet Repair

Warranty Information:

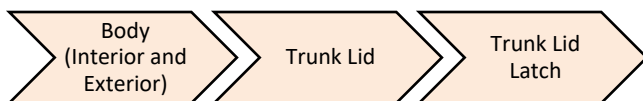
MODEL	OP CODE	OPERATION	OP TIME	CAUSAL PART	NATURE CODE	CAUSE CODE
Sonata (LFa)	11D153R0	Trunk Latch Base Replacement	0.3 M/H	81231-C1010QQH	I11	ZZ3
Sonata Hybrid (LF HEV) Sonata Plug-in Hybrid (LF PHEV)	11D153R1			81231-A7030QQH		
Accent (HC)	11D153R2		0.4 M/H	81231-3V000QQH		
Azera (HG)	11D153R3					

NOTE 1: Submit Claim on Campaign Claim Entry Screen.

NOTE 2: If a part that is not covered by this recall is in need of replacement while performing this recall, and the affected part is still under warranty, please submit a separate claim using the same repair order. If the affected part is out of warranty, submit a prior approval request for goodwill consideration prior to performing the work.

Service Procedure:

1. Remove the trunk latch assembly according to the applicable vehicle shop manual.



Scan the QR code or use the link below for a reference video of the service procedure.



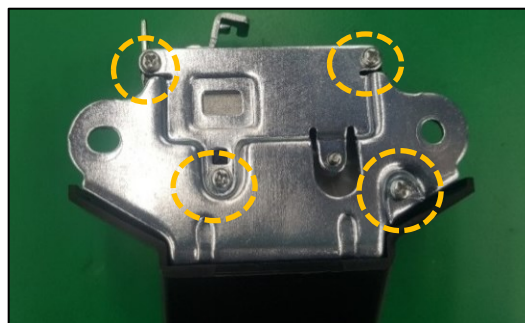
<https://vimeo.com/610413286/1563f12008>



2. Remove the trunk latch assembly screws.

Screw Tightening Torque

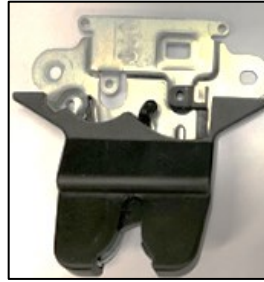
lb-ft	• 5.1-8.0
kgf.m	• 0.7-1.1
N.m	• 6.9-10.8



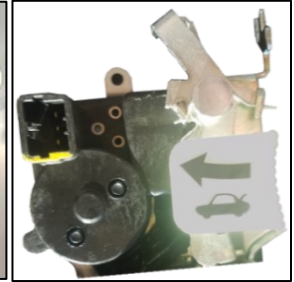
3. Replace the trunk lid latch base and reuse the actuator.

NOTICE

When reusing the actuator, do not contaminate the motor area.



Latch base



Actuator

4. Reinstall the removed parts in reverse order of removal.
5. After reassembly, verify that the trunk and emergency release lever both operate properly.
6. The service procedure is now complete.