

## **Recall Inspection and Repair Instructions**

**NHTSA Recall #:** 21V-610

**Tiffin Motorhomes Recall #:** WAY-101

**Models Involved:** 2017, 2018, 2019, 2020, 2021 & 2022 Wayfarer Motorhomes, all floorplans.

**These work instructions are for the LW floor plan ONLY**

### **Tools Needed:**

3/4" or 19MM BOX END WRENCH  
3/4" or 19MM DEEP WELL SOCKET  
9/16" BOX END WRENCH  
11/16" BOX END WRENCH  
RATCHET  
PNEUMATIC OR ELECTRIC IMPACT GUN  
HAMMER/MALLET  
PRY BAR  
CUTTING TOOL (FOR REMOVING HARDWARE  
FROM CHASSIS EXTENSIONS)  
FLOOR JACK  
JACK STANDS

### **Parts Needed:**

**25 LW floorplans** will require the following parts:  
1 of 5125204  
2" grade 8 hex bolts and nuts kit

### **FLAT RATE CODES AND TIMES**

***When filing the warranty claim for payment please use the following flat rate codes and times.***  
For the LW floor plan, please use code **WF8803RC01**, and please contact Winfield Service for authorization numbers and time allowed.

### **Inspection Instructions/Procedure:**

1. Inspect the condition of the existing frame rail extensions for signs of damage. If there is damage, please contact Wayfarer at 205-487-4710 for instructions and authorization.
2. If no damage is found, please proceed with the repair.

## Repair Instructions/Procedure:

1. Prep the garage area by removing the interior corner trim, 8 pieces in total, from the interior of the garage area (see photos below).



2. Remove the diamond tread flooring using a pry bar to start at the corners. Peel back rubber flooring from each side of the coach until the 4 flooring screws become visible. Remove the flooring screws from the garage area completely.
3. Prep the underside of the garage area by removing the trailer hitch plug and cutting any quip ties holding the taillight harness and 7-pin harness to the rails or extensions. Route all harnesses back through the extensions allowing the area to be clear when ready for the extension removal (photo below).



4. For units with a rear mounted generator, remove the generator exhaust and exhaust hanger (photo below).



5. Remove the receiver hitch by removing the 6 grad 8 hex bolts, 3 per side, from the unit's receiver hitch using a  $\frac{3}{4}$ " or 19 MM socket and box end wrench. Lower from chassis using a floor jack.
6. Remove 4 hex bolts per side holding the center cross member in place (photo below).



7. Remove all hydraulic jack hardware and zip tie jacks up and out of the way.

- Using a  $\frac{3}{4}$ " wrench and driver of choice, loosen the 4 grade 8 chassis bolts per side, these bolts attach each rail to the Mercedes frame rail. Once the bolts are driven out an inch or so, cut the front 2 bolts per side and drive out towards outside of coach for removal. See photos below.



- Remove the remaining 2 "chassis to extension" bolts that pass through the hydraulic jacks. While having someone hold the extension rail, drive out the remaining bolts which will allow the frame extensions to be lowered to the ground. Removing the cross member in Step 6 will allow the extensions to be removed and lowered one at a time (photo below).



- Reinstall the hydraulic leveling jacks in tandem with Step 11. **IMPORTANT NOTE:** Units equipped with Bigfoot leveling system will need to ensure the hydraulic foot and ram are reinstalled as a "washer" on the inside of the frame rail.

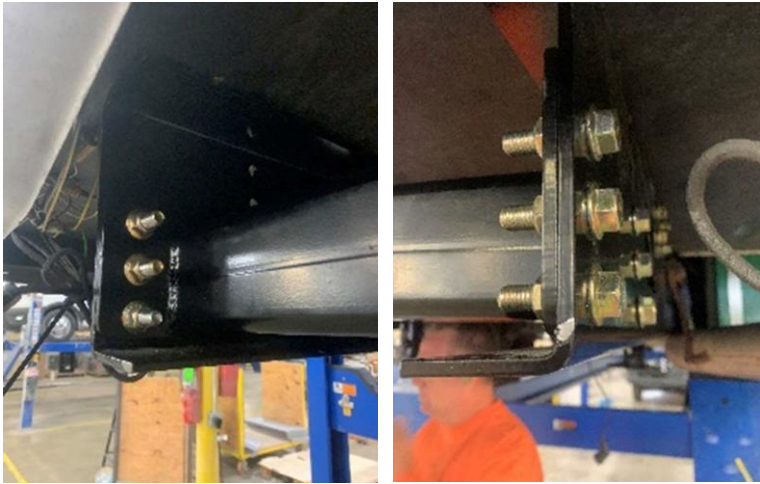
11. Once you have the new extensions, lift into place one side at a time. Feed the bolts in from the backside (opposite way of removal), through the hydraulic jacks and secure. Tighten bolts to 85 ft. lbs.



12. Install new cross member using 4 grad 8 hex bolts per side. Tighten bolts to 85 ft. lbs.



13. Once the extensions are fastened to the chassis and tightened, slide the new hitch into place and attach to inside of the frame rail extensions using 6 grade 8 hex bolts. Tighten bolts to 85 ft. lbs. See photos below.



14. Reinstall 7-pin connector and zip tie all hydraulic lines and electrical harnesses in place as needed.
15. Reinstall generator exhaust and exhaust hanger to new rail extension.
16. Finish the garage area using the removed floor screws, fasten the garage floor to the new rails. Roll rubber flooring back into place and reinstall removed corner trim to finish the garage area.