

TO: Mercedes-Benz Dealer Principals, General Managers, Sales Managers, Service Managers, Parts Managers	FROM: Gregory Gunther, Department Manager, Vehicle Compliance and Analysis, Engineering Services
RE: Recall Campaign Launch Notification Check the Side-impact Crash Sensor MY20-21 CLS-Class, E-Class, G-Class, AMG GT-Class, GLC-Class and S-Class (213, 222, 253, 257, 290 and 463 platform)	DATE: August 20, 2021

IMPORTANT RECALL CAMPAIGN UPDATE

Please see the attached documents related to the campaign listed above.

Please note that all customer inquiries should be directed to the Customer Assistance Center at 1-800-FOR-MERCEDES.

Sincerely,

Gregory Gunther

Department Manager, Vehicle Compliance & Analysis



Recall Campaign Launch Notification			August 20, 2021
Campaign No. :	NHTSA ID	Campaign Desc. :	Check the Side Crash Sensor
2021070032	21V527	21P9193111	
2021070033		21P9193112	
<p>This is to notify you of the Recall Campaign Launch to check the side-impact crash sensors on 542 Model Year (“MY”) 2020-2021 E-Class (213 platform), S-Class (222 platform), GLC (253 platform), CLS (257 platform), AMG GT 4-doors coupe (290 platform) and G-Class (463 platform) vehicles. The recall campaign will be visible on the www.safercar.gov website and may generate questions from customers. Affected VINs will be flagged in VMI as “OPEN” on August 20, 2021.</p>			
Background			
Issue	Mercedes-Benz AG (“MBAG”), the manufacturer of Mercedes-Benz vehicles, has determined that on certain Model Year (“MY”) 2020-2021 E-Class (213 platform), S-Class (222 platform), GLC (253 platform), CLS (257 platform), AMG GT 4-doors coupe (290 platform) and G-Class (463 platform) vehicles, the locking mechanism for the electrical connector on the side-impact crash sensors might not meet current production specifications. In this case, the side-impact crash sensor connector might loosen over the vehicle’s lifetime. In the event of a side impact crash, this may lead to a delayed activation of the restraint systems, potentially resulting in a reduced restraint performance, which could increase the risk of injury. When the issue occurs, a specific warning message is displayed and the SRS warning lamp is illuminated in the instrument cluster.		
What We’re Doing	MBUSA will conduct a voluntary recall. An authorized Mercedes-Benz dealer will check the side-impact crash sensors in the doors on the affected vehicles and replace them, if necessary.		
Parts	The remedy is available and can be performed. Please note that the estimated replacement rate is 7%. Parts should only be ordered in the event a replacement is required.		
Vehicles Affected			
Vehicle Model Year(s)	2020-2021		
Vehicle Model	CLS-Class, E-Class, G-Class, AMG GT-Class, GLC-Class and S-Class		
Vehicle Populations			
Total Recall Population	542		
Total Vehicles in Dealer Inventory	0		
<p>Given this notice, it is a violation of Federal law for a dealer to sell or lease any new MY20-21 CLS-Class, E-Class, G-Class, AMG GT-Class, GLC-Class and S-Class vehicles in dealer inventory covered by this notification until the vehicle has been repaired. Once the remedy is available, the vehicles will be flagged as “OPEN” and Work Instructions will be available in Star TekInfo. Once the repair is complete the vehicle may be sold or leased.</p> <p>Loaner and demonstrator vehicles may continue to be driven, but must not be retailed until repaired. As a matter of normal service process, please check for other repair measures which might be applicable to the vehicle(s).</p> <p>Additionally, given this notice, it is a violation of Federal Law for car rental companies to rent new MY20-21 CLS-Class, E-Class, G-Class, AMG GT-Class, GLC-Class and S-Class vehicles covered by this notification until the vehicle has been repaired.</p>			
Next Steps/Notes			
Customer Notification Timeline	Customer letters will be mailed on September 3, 2021.		
AOMS/SOMS	AOMs – This recall may generate questions from your dealers. Please forward this notice to your dealers ASAP.		
Rental Fleet Partners	This recall may affect vehicles in your fleet. Please contact your respective MBUSA fleet representative for further information and next steps. For repairs, please contact your preferred MBUSA dealer.		
<p>While we regret any inconvenience this may cause, MBUSA is determined to maintain a high level of vehicle quality and customer satisfaction. Please refer all customer inquiries to the Customer Assistance Center at 1-800-FOR-MERCEDES.</p>			





Mercedes-Benz

Campaign No. 2021070032, August 2021

TO: ALL MERCEDES-BENZ CENTERS

SUBJECT: **Models various**
Model year 2020-2021**Check the Side Crash Sensor (Front and Rear Doors)**

Mercedes-Benz AG (“MBAG”), the manufacturer of Mercedes-Benz vehicles, has determined that on certain Model Year (“MY”) 2020-2021 E-Class (213 platform), S-Class (222 platform), GLC (253 platform), CLS (257 platform), AMG GT 4-doors coupe (290 platform) and G-Class (463 platform) vehicles, the locking mechanism for the electrical connector on the side-impact crash sensors might not meet current production specifications. In this case, the side-impact crash sensor connector might loosen over the vehicle’s lifetime. In the event of a side impact crash, this may lead to a delayed activation of the restraint systems, which could increase the risk of injury. When the issue occurs, a specific warning message is displayed and the SRS warning lamp is illuminated in the instrument cluster. An authorized Mercedes-Benz dealer will check the side-impact crash sensors in the doors on the affected vehicles and replace them, if necessary.

Prior to performing this Campaign:

- VMI must always be checked before performing campaigns to verify that the campaign is required on a specific vehicle. Always check for any other open campaigns, and perform accordingly.
- Please review the entire Campaign bulletin and follow the repair procedure exactly as described.

Please note that Recall Campaigns **do not expire** and may also be performed on a vehicle with a vehicle status indicator.

Approximately 138 vehicles are affected.

Order No. P-RC- 2021070032

This bulletin has been created and maintained in accordance with MBUSA-SLP S423QH001, Document and Data Control, and MBUSA-SLP S424HH001, Control of Quality Records.

Check airbag-pressure sensors in the front doors and rear doors and replace if necessary

Models 213, 222, 253, 257, 290, and 463

Check/test procedure

1. Remove door lining on left and right front doors.

i For basic data of models **213** and **253**, see **AR72.10-P-1000LW**.

i For basic data of model **222**, see **AR72.10-P-1000LF**.

i For basic data of models **257** and **290**, see **AR72.10-P-6575FR**.

i For basic data of model **463**, see **AR72.10-P-1000XG**.

2. Remove door lining on left and right rear doors.

i For basic data of models **213** and **253**, see **AR72.12-P-1010LW**.

i For basic data of model **222**, see **AR72.12-P-1010LF**.

i For basic data of models **257** and **290**, see **AR72.12-P-1011FR**.

i For basic data of model **463**, see **AR72.12-P-1010XG**.

3. Disconnect the plugs on all four airbag pressure sensors (**A, Figure 1**) and check whether the two catch tabs (**B, Figure 2**) are present.

i The door modules must **not** be removed!

i **Two catch tabs must be present!**

i Figure 3: **Not OK** depiction.



Figure1, shown on model 213

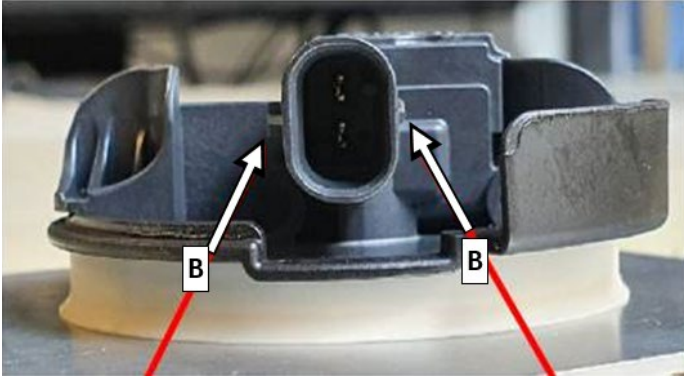


Figure 2

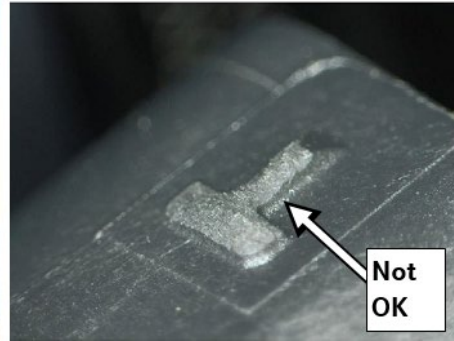


Figure 3, not OK

- a. If there is only one catch tab: Carry out work procedure.
- b. If two catch tabs are present: End measure.

Work procedure

1. Replace defective airbag pressure sensor.



Up to four airbag pressure sensors can be affected.



For basic data of models **213** and **253**, see **AR91.60-P-0760LW**.



For basic data of model **222**, see **AR91.60-P-0760LF**.



For basic data of models **257** and **290**, see **AR91.60-P-0760FR**.



For basic data of model **463**, see **AR91.60-P-0760XG**.



Contrary to the work instructions in WIS, it is not required to check the supplemental restraint system (SRS) with the diagnostic system.

2. Assemble in reverse order.
-

Primary Parts Information

Qty.	Part Name	Part Number
As required	Airbag pressure sensor	A 213 905 14 00

i Note:

- The following allowable labor operation should be used when submitting a warranty claim for this repair:

Warranty Information

Operation: (02-0634)	Check airbag pressure sensor in front and rear doors on left and right Models: 253, 257 and 290 <u>Includes:</u> Remove/install 4 door trims
(02-0634)	Check airbag pressure sensor in front and rear doors on left and right Models: 213 and 222 <u>Includes:</u> Remove/install 4 door trims
(02-0634)	Check airbag pressure sensor in front and rear doors on left and right Model: 463 <u>Includes:</u> Remove/install 4 door trims
(02-0635)	Replace one airbag pressure sensor (after check) <u>Includes:</u> Disconnect ground line of starter battery
(02-0636)*	Replace each remaining airbag pressure sensor (one pressure sensor removed)

Damage Code	Operation Number	Labor Time (hrs.)
91 931 11	02-0634 Models: 253, 257 and 290	1.5
	02-0634 Models: 213 and 222	1.6
	02-0634 Model: 463	1.8
	02-0635	0.3
	02-0636*	0.1

* Use operation item as often as necessary

i Note

Always check ASRA for the current OP-Code times. Labor times are subject to change and updates may not be reflected in this document.