

Recall Bulletin :

NO. 21V-515



Xtreme Outdoors
1519 Boettler Rd. Suite A
Uniontown, OH 44685

Models:

Xtreme Outdoors 2021 MyPod

Overview:

This bulletin is a quick photo verification of one or more of the frame to body mounts on the 2021 MyPod. Xtreme Outdoors believes that it has located and accounted for all the defective frames. However, out of an abundance of caution, we are implementing this Recall Bulletin to ensure that there are no additional defective frames in your inventory or that have been sold to consumers.

Issue:

Support brackets that secure the body of the MyPod to the trailer frame can potentially fail. Xtreme Outdoor discovered that certain frames used an out of specification support bracket that may not properly secure the trailer's body to the frame. Trailers utilizing this insufficient bracket could result in the trailer's body detaching during transit, creating a road hazard for trailing drivers.

Correction:

To correct this defect, Xtreme Outdoors asks you to please confirm whether the trailer body is attached to the trailer's frame using the correct bracket: 3/16" thick, 2" wide, extruded aluminum angle. Units equipped with the incorrect bracket will have a 1/8" thick, 2" wide bent aluminum angle that may also have visible fractures. Do not use the unit with the incorrect bracket and contact Xtreme Outdoors Warranty Department at 814-701-4891.

Install Time: 0.25hr For photo verification.

VIN Range:

Non-sequential range: 1X9TT111XM1 [REDACTED] — 1X9TT1114M1 [REDACTED]

Please contact us with any questions, concerns or comments:

Corporate Office Sales: 1-888-469-8688

Sales Support: support@goxtoutdoors.com

Warranty & Tech Support Phone: 814-701-4891

Warranty Email: warranty@goxtoutdoors.com

Parts Email: parts@goxtoutdoors.com

Technical Support & Parts Phone: 814-701-4884

Technical Support Email: ts@goxtoutdoors.com

Sincerely,

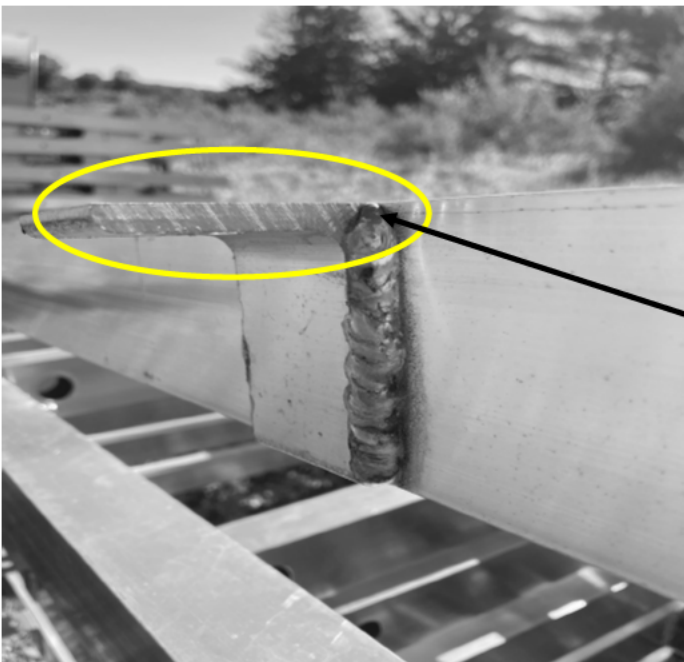
Xtreme Outdoors Llc.

Incorrect Mount Size

This 1/8" L-bracket is the incorrect thickness not to the original design of this model.



Please take photos of one or more of these mounting brackets and submit them in an email to Recall@goxtoutdoors.com You can also take your unit to your selling dealer to have this bulletin completed. Dealers can submit a claim for the allotted time if a customer wants a dealer inspection.



Correct Mount thickness

This L-bracket support mount is the correct thickness at 3/16". Please confirm your unit has this mount.