

TO: Mercedes-Benz Dealer Principals, General Managers, Sales Managers, Service Managers, Parts Managers	FROM: Gregory Gunther, Department Manager, Vehicle Compliance and Analysis, Engineering Services
RE: Recall Campaign Launch Notification Check Carbon-Fiber Driveshaft Bonding –Wave 1 MY16-17 190 (AMG GT-Class)	DATE: October 1 st , 2021

IMPORTANT RECALL CAMPAIGN UPDATE

Please see the attached documents related to the campaign listed above.

Please note that all customer inquiries should be directed to the Customer Assistance Center at 1-800-FOR-MERCEDES.

Sincerely,

Gregory Gunther

Department Manager, Vehicle Compliance & Analysis



Recall Campaign Launch Notification			October 1, 2021
Campaign No. :	NHTSA ID	Campaign Desc. :	Check Carbon-Fiber Driveshaft Bonding
2021090008	21V478	21P 4190024	
This is to notify you of the Recall Campaign Launch (Wave 1) to check the carbon-fiber driveshaft on 799 Model Year (“MY”) 2016-2017 AMG GT-Class (190 platform) vehicles. The recall campaign will be visible on the www.safercar.gov website and may generate questions from customers. Affected VINs will be flagged in VMI as “OPEN” on October 1st, 2021 .			
Background			
Issue	Mercedes-Benz AG (“MBAG”), the manufacturer of Mercedes-Benz vehicles, has determined that on certain MY16-17 AMG GT-Class vehicles (190 platform), the bonding between the carbon-fiber driveshaft and the engine/transmission flange might not meet current production specifications. The bonding might be impaired due to the presence of residue remaining from the production process on the bonding surfaces between the carbon-fiber driveshaft and the flange. In such case, the connection between the carbon-fiber driveshaft and the flange might detach during vehicle operation, resulting in the impairment of the transmission and the potential for a loss of engagement between the engine and the transmission. This might result in a loss of motive power in isolated cases, which could increase the risk of a crash. In the event of a transmission malfunction or loss of traction between engine and transmission, the check engine warning lamp in the instrument cluster will alert the driver and the vehicle may emit grinding or other noises.		
What We’re Doing	MBUSA is conducting a voluntary recall. An authorized Mercedes-Benz dealer will check the carbon-fiber driveshaft on the affected vehicles and replace it, if necessary.		
Parts	The remedy is available and can be performed.		
Vehicles Affected			
Vehicle Model Year(s)	2016-2017		
Vehicle Model	AMG GT-Class		
Vehicle Populations			
Total Recall Population	(Wave 1) 799 vehicles		
Total Vehicles in Dealer Inventory	0		
Given this notice, it is a violation of Federal law for a dealer to sell or lease any new MY16-17 AMG GT-Class vehicles in dealer inventory covered by this notification until the vehicle has been repaired. Once the remedy is available, the vehicles will be flagged as “OPEN” and Work Instructions will be available in Xentry. Once the repair is complete the vehicle may be sold or leased.			
Loaner and demonstrator vehicles may continue to be driven, but must not be retailed until repaired. As a matter of normal service process, please check for other repair measures which might be applicable to the vehicle(s)			
Additionally, given this notice, it is a violation of Federal Law for car rental companies to rent new MY16-17 AMG GT-Class vehicles covered by this notification until the vehicle has been repaired.			
Next Steps/Notes			
Customer Notification Timeline	Customer letters for wave 1 will be mailed on October 15, 2021.		
AOMS/SOMS	AOMs – This recall may generate questions from your dealers. Please forward this notice to your dealers ASAP.		
Rental Fleet Partners	This recall may affect vehicles in your fleet. Please contact your respective MBUSA fleet representative for further information and next steps. For repairs, please contact your preferred MBUSA dealer.		
While we regret any inconvenience this may cause, MBUSA is determined to maintain a high level of vehicle quality and customer satisfaction. Please refer all customer inquiries to the Customer Assistance Center at 1-800-FOR-MERCEDES.			





Mercedes-Benz

Campaign No. 2021090008, October 2021

TO: ALL MERCEDES-BENZ CENTERS

SUBJECT: **Model AMG GT-Class vehicles (190 platform)**
Model Year 2016-2017
Check and Replace **Carbon-Fiber Driveshaft**

Mercedes-Benz AG (“MBAG”), the manufacturer of Mercedes-Benz vehicles, has determined that on certain MY16-17 AMG GT-Class vehicles (190 platform), the bonding between the carbon-fiber driveshaft and the engine/transmission flange might not meet current production specifications. The bonding might be impaired due to the presence of residue remaining from the production process on the bonding surfaces between the carbon-fiber driveshaft and the flange. In such case, the connection between the carbon-fiber driveshaft and the flange might detach during vehicle operation, resulting in the impairment of the transmission and the potential for a loss of engagement between the engine and the transmission. This might result in a loss of motive power in isolated cases, which could increase the risk of a crash. In the event of a transmission malfunction or loss of traction between engine and transmission, the check engine warning lamp in the instrument cluster will alert the driver and the vehicle may emit grinding or other noises. An authorized Mercedes-Benz dealer will check the carbon-fiber driveshaft on the affected vehicles and replace it, if necessary.

Prior to performing this Recall Campaign:

- Please check VMI to determine if the vehicle is involved in the Campaign and if it has been previously repaired. Always Check VMI for any open campaigns, and perform accordingly.
- Please review the entire Recall Campaign bulletin and follow the repair procedure exactly as described.

Please note that Recall Campaigns **do not expire** and may also be performed on a vehicle with a vehicle status indicator.

Approximately 799 vehicles are involved.

Order No. P-RC-2021090008

This bulletin has been created and maintained in accordance with MBUSA-SLP S423QH001, Document and Data Control, and MBUSA-SLP S424HH001, Control of Quality Records.

Check/test procedure

1. Remove lower engine compartment lining (A, figure 1).

**Figure 1**

2. Open maintenance access on engine-side drive shaft housing.

Rotate engine at center bolt in direction of rotation until affixed label on drive shaft is visible.

i Rotate engine at center bolt in direction of rotation with a 27 mm open end wrench.

**Figure 2**

3. Check part item number (**B, figure 3**) of drive shaft.

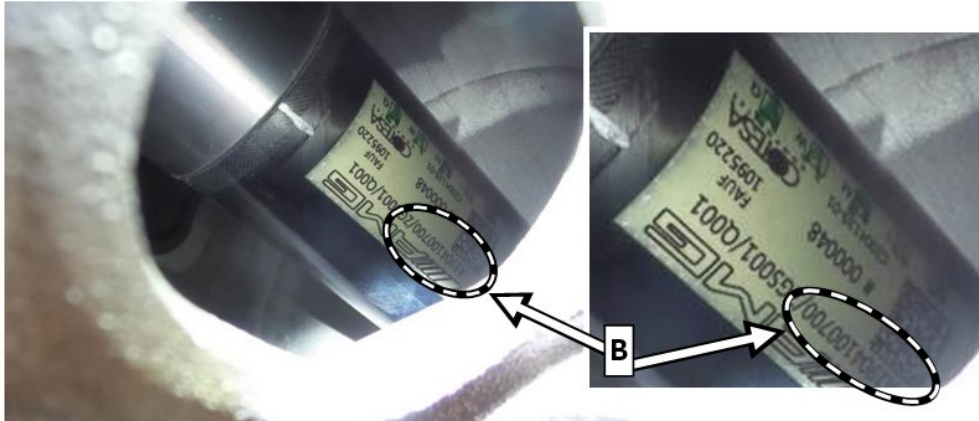


Figure 3

- a. If part item number is **A 190 410 07 00**:
Carry out **work procedure**.
- b. If part item number is **A 190 410 06 00** or **A190 410 14 00** or **A 190 410 23 00**:
End measure.

i The **findings** from the check/test procedure must be documented **in writing on the work order**.

Work procedure

- 1. Replace drive shaft.
i For basic data, see **AR41.10-P-0051MNB**.

Primary Parts Information

Qty.	Part Name	Part Number	Estimated Replacement Rate
1	Drive shaft	A 190 410 23 00	95%
1	O-ring	A 027 997 25 45	95%
2	Mounting plate lock washer	A 190 411 15 00	95%
1	Screw	N 000000 006551	95%
6	Hexalobular bolt (drive shaft to flange)	N 000000 000276	95%
16	Hexalobular bolt (propeller shaft to engine and transmission)	N 000000 006589	95%
2	Hexalobular bolt (propeller shaft to transmission, starter)	N 910105 010044	95%
2	Nut (propeller shaft to transmission, starter)	N 910112 010001	95%

1	Lubricant	A 000 989 03 67	95%
2	Clamp (exhaust system)	A 000 490 15 41	95%
1	Sealing ring (exhaust system)	A 221 492 00 81	95%
4	Transmission oil line sealing ring	A 020 997 27 45	95%
12	Screw (axle shaft to rear axle flange)	A 002 990 10 03	95%
2	Collar nut (rear axle shafts to hub)	A 000 353 13 73	95%
4	Nut (torsion bar linkage to wheel carrier)	N 000000 003275	95%
2	Bolt (upper transverse control arm to wheel carrier)	N 910105 014016	95%
2	Nut (transverse control arm to wheel carrier)	A 005 990 47 50	95%
2	Bolt (transmission mount to transmission carrier)	N 910105 008019	95%
8	Bolt (transmission carrier to transmission)	N 910143 008004	95%

Warranty Information

With Check

Operation: Check drive shaft (02-0629)

Damage Code	Operation Number	Labor Time (hrs.)
41 900 24	02-0629*	0.8

With Check and Repair

Operation: Check drive shaft (02-0629)
Replace drive shaft (02-0630)

Damage Code	Operation Number	Labor Time (hrs.)
41 900 24	02-0629*	0.8
	02-0630**	9.3

***Includes:** Check of part item number

****Includes:** Fully remove/install engine compartment linings; remove/install drive shaft with housing; check/correct transmission oil level; unscrew/screw on ground line; remove/install 2 wheel and tire assemblies; extra work for: Remove/install 2 wheel and tire assemblies in case of assembly with wheel lift dolly; extra work for: Remove/install exhaust system

Note

Always check ASRA for the current OP-Code times. Labor times are subject to change and updates may not be reflected in this document.