

RECALL 21V442. 2021-371 REMEDY INSTRUCTIONS



Make(s): IBEX
Model(s): MANY, SEE BELOW
Model Year(s): 2021

Concern: The shackle nuts may not be tight. This condition allows the shackle nuts to freely rotate off the shackle bolt which may detach from the vehicle and cause loss of vehicle control which may lead to a crash.

Repair Code: RC-005-12-00-004074
Allotted Time: 1.00 HRS
Inspection Code: RC-005-05-00-004073
Allotted Time: .50 HRS
Photo(s) Required: NO
Prior Authorization Required: YES
Part(s) Kit Number: F100272630
Part(s) Return: N/A

Disconnect the vehicles' battery Positive and Negative, disconnect any House battery(s) Positive and Negative, if equipped with a generator ensure it is off and lastly, ensure the vehicle is disconnected from shore power. Block any tires/wheels to prevent the vehicle from rolling. Failure to do so may result in electrocution, fire or other personal injury, property damage and/or death.

MODELS: BXT20BHS, BXT20BHS-W AND BXT23RLDS

STEP 1: SECURE THE TRAILER WITH JACK STANDS AND WHEEL CHOCKS;

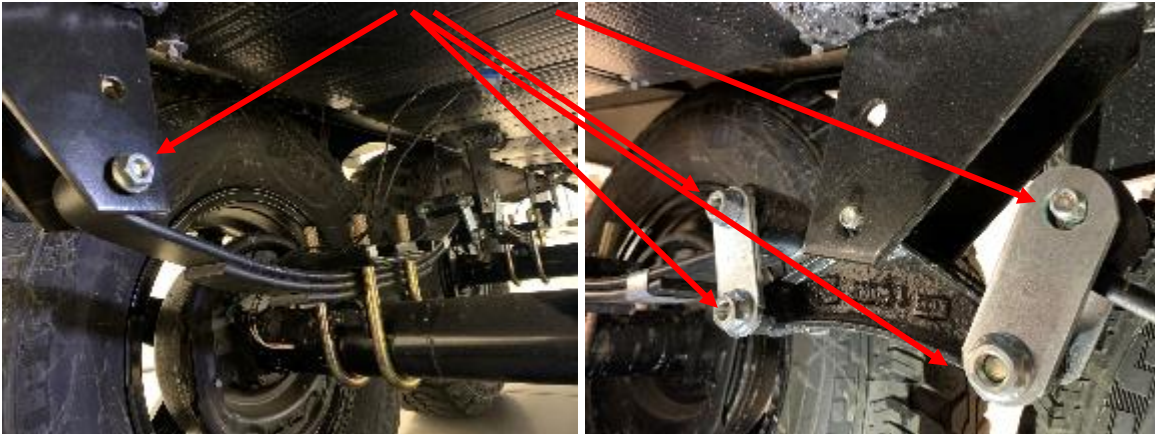
STEP 2: INSPECT ALL SHACKLE NUTS AND BOLTS, THERE SHOULD BE AT LEAST THREE (3) SHACKLE BOLT THREADS PROTRUDING OUT OF THE SHACKLE NUT;

STEP 3: IF THERE IS NOT THE MINIMUM SHACKLE BOLT THREADS, IF THE NUT IS VISUALLY LOOSE OR MISSING, INSTALL A NEW SHACKLE NUT AND TIGHTEN TO THE MINIMUM THREAD EXPOSURE;

NOTE: BE SURE TO USE THE APPROPRIATE SIZE BOX WRENCH ON THE SHACKLE BOLT, IF THIS ISN'T DONE, THE SPLINES ON THE SHACKLE BOLT(S) MAY BE DAMAGED.

STEP 4: BELOW ARE PICTURES OF LOOSE/MISSING SHACKLE NUTS AND A PICTURE OF CORRECTLY INSTALLED SHACKLE NUTS.

LOOSE/MISSING SHACKLE NUTS



CORRECTLY INSTALLED SHACKLE NUTS

