



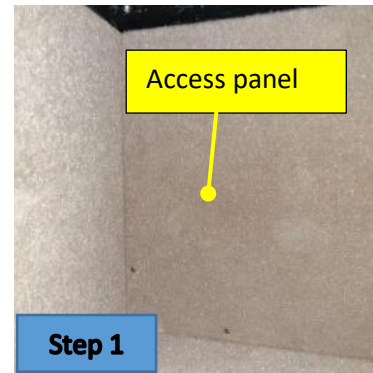
INCORRECT ROUTING OF LP HOSE TO FURNACE

Bulletin Type:	Safety Recall	Publication Date:	March 29, 2021
Bulletin #(s):	21V-180	Make(s):	Entegra Jayco
Job Code(s):	9903565	Model(s):	Reatta Embark
Flat Rate(s):	.75 hour	Model Year(s):	2021

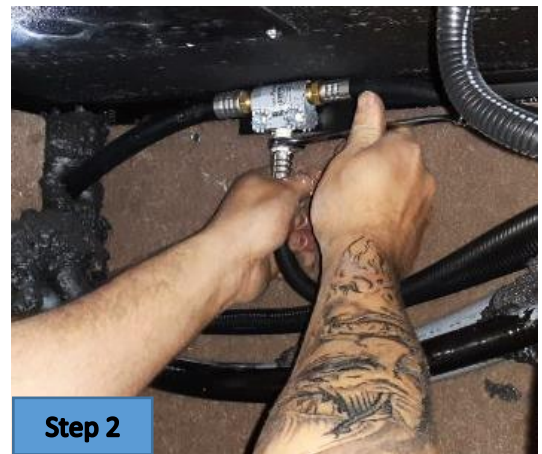
Incident:	Incorrect routing of the LP hose to furnace may cause damage from surrounding components and/or restrict gas flow.
Affected Units:	2021 Reatta : M1NJ 8061 8062 5063 2021 Embark: M1NJ 4051 4054 4056
Parts Kit:	Parts Kit #: 21V-180
	Parts Kit Contents: 1 Gas line hose (furnace) 1 Gas manifold extension
Misc. Tools & Supplies:	Screw gun w/square and Phillips bit Putty knife 9/16" open end wrench 3/4" open end wrench Wire cutter Wire stripper Spray Foam insulation Electrical tape Butyl tape Wago connectors

INSTRUCTIONS

1. The gas line manifold access is located in the rear driver's side storage compartment. Using a screw gun with a Phillips bit, remove the back access panel as shown to the right. Set screws aside for reuse.



2. Locate the LP manifold in the storage compartment. Using a 9/16" open-end wrench, remove the (furnace) LP hose on the bottom of the manifold as shown to the right.



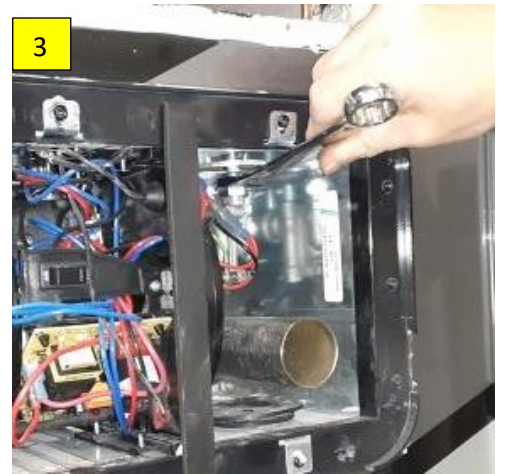
3. Follow the LP hose to the back of the compartment. Loosen the hose from the foam sealant and remove any of it that will prevent the hose from being fed through the compartment wall.
4. Push the hose through the compartment hole as far as possible. You will be removing this hose.



- Remove the furnace cover. You will need to remove the exhaust (#1) prior to removing the cover (#2). Set all parts and screws aside for re-use later.



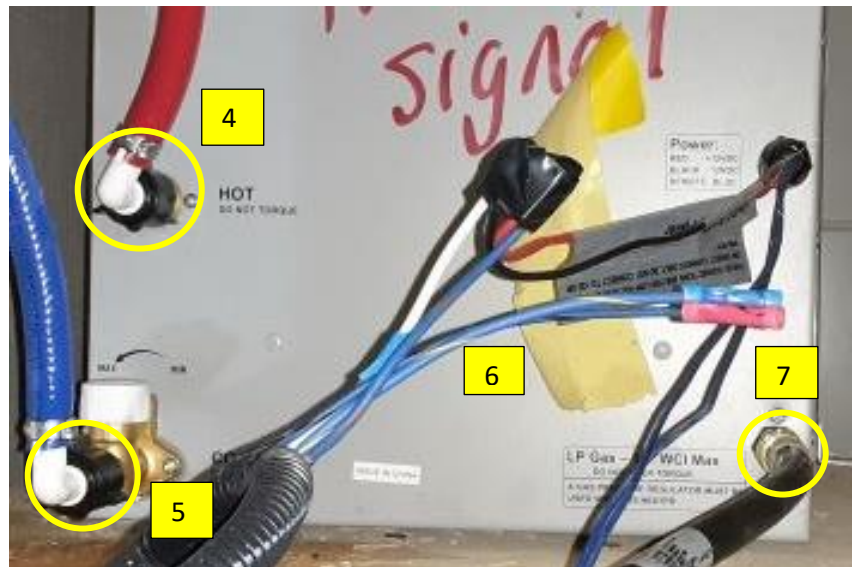
- Using a 3/4" open-end wrench, disconnect the LP hose from the furnace (#3).



- Inside the unit, locate the water heater in the rear bath cabinet.

NOTE: Open the bath faucet and drain all water prior to disconnecting the water line hook-ups(s)

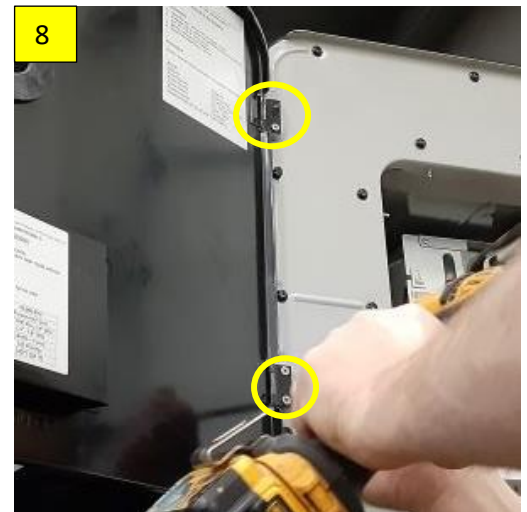
- Disconnect both water lines. You should be able to loosen and disconnect them by hand (#4 & 5).
- Using a wire cutter, cut the wires connected to the water heater, taking note of the connections as you will need to reconnect them later in the process (#6).



- Using a 3/4" open-end wrench, disconnect the gas line from the water heater (#7).

11. On the exterior of the unit, using a screw gun with a square head bit, remove the water heater door by removing the (2) hinge screws from the unit. The screws attaching the hinge to the door should remain attached. Set the screws aside for later reuse (#8).

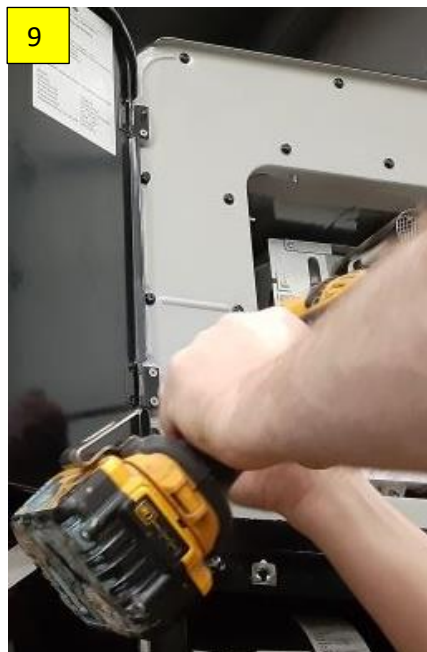
NOTE: Have a second person hold the door while you remove it from the unit to help prevent damage to the door or unit.



12. Remove all of the screws that secure the water heater to the unit. Set the screws aside for reuse (#9).

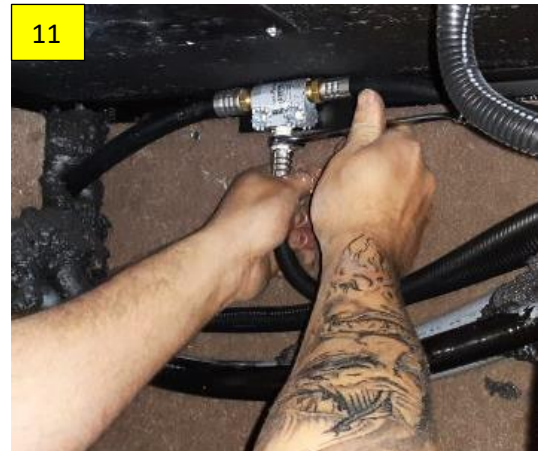
NOTE: Having a second person assist in removing the water heater from the unit will help prevent damage to the water heater and the sidewall of the unit.

13. Remove the water heater from the unit. You may have to gently pry under the edge of the water heater with a putty knife to break the butyl tape seal (#10).



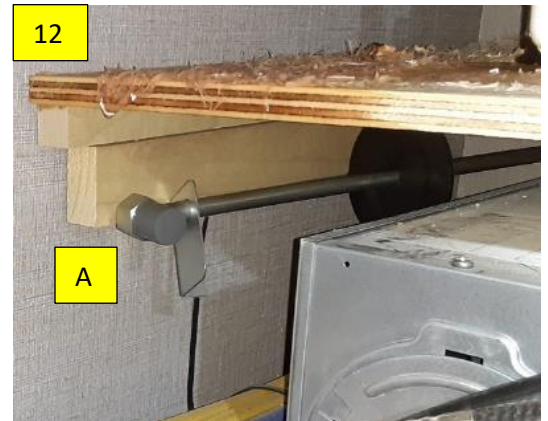
14. Removing the water heater will give you better access to the furnace LP hose. Push the hose through the hole far as possible to help in removing the hose. You will need to go under the unit to remove the hose. Go under unit directly under the furnace, locate the furnace LP hose and remove it from the unit.
15. Install the new furnace LP hose. Starting in the storage compartment, put the new LP hose through the hole in the compartment back wall (where you removed the old hose). You may have to remove additional foam sealant.
16. Push the LP hose through allowing enough LP hose in the compartment to reconnect to the manifold.

17. Apply pipe sealant to the threads on the LP hose. Using a 9/16" open-end wrench, connect the LP hose to the manifold.



18. Going back under the unit directly under the furnace, insert the other end of the LP hose through the hole the original LP was in. Push as much hose as possible up into the unit.

19. Install the new gas manifold extension from the inside of the unit. The extension should be installed with end (A) in the back of the furnace and end (B) downward at the furnace connection (#12).



20. Install the extension support bracket on the water heater shelf support cleat (#13)

21. Pull the new LP hose into the cabinet far enough to be easily installed on the extension. Make sure the LP hose is not twisted, kinked or pinched.

22. Install the hose to the extension. Make sure the connection is tight.



Using a 3/4" open-end wrench, install the furnace connection to the manifold extension connection (#14).



23. Install new butyl tape over the existing tape on the water heater (#15).

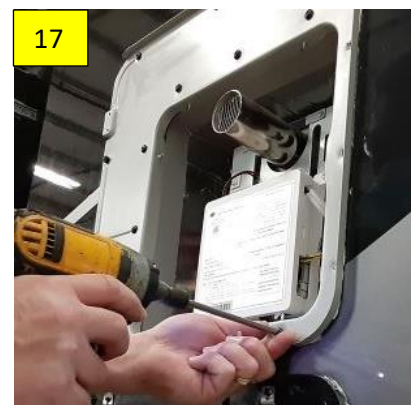


24. Re-install the water heater in the unit (#16).

NOTE: Having a second person assist in installing the water heater from the unit will help prevent damage to the water heater and the sidewall of the unit.



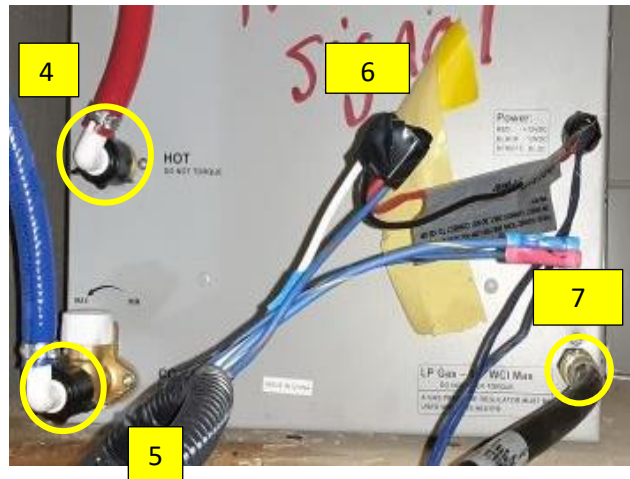
25. Re-install the (water heater) screws (#17)



Re-connect the water lines making sure they are tight (#4 & 5).

26. Re-connect the (water heater) LP gas hose (#7).

27. Strip the wires that were previously cut back approximately 5/16" (#6). Using Wago connectors, reconnect the water heater wires. Wrap the connectors with electrical tape as shown below.



28. Add foam sealant (in the storage compartment) around the newly installed LP hose replacing any foam that was taken out when removing the original hose (#18).



29. Re-install the (back) compartment access panel.

30. Re-install the water heater door.

NOTE: Having a second person hold the door while you re-install it will help prevent damage to the door or unit.

31. Re-install the furnace cover and the furnace manifold.

Jayco's sole obligation under our limited warranty is to repair or replace defective materials and/or workmanship deemed our responsibility as determined by Jayco in our sole discretion. Jayco reserves the right to use new and/or remanufactured parts or materials of similar quality to complete any work, and to make parts and/or design changes as appropriate without notice to anyone. Jayco designs and/or materials changes are done without obligation to incorporate such changes in previously manufactured product. Jayco makes every reasonable effort to ensure field remedies will not adversely affect performance and/or safety of the unit. This field remedy is not intended to extend to future performance of this RV, or any of its materials, components or parts beyond the standard warranty period. The RV owner's obligation to notify Jayco, or one of its independent, authorized dealers, of a claimed defect does not modify any obligation placed on the RV owner to contact Jayco directly when attempting to pursue remedies under state or federal law. Jan. 2019.

903 South Main Street • P.O. Box 460 • Middlebury, IN 46540