



Technical Service Bulletin

GROUP RECALL	NUMBER 21-01-033HG
DATE JUNE 2021	MODEL(S) G80 (DH)

SUBJECT: G80 (DH) MULTI FUSE REPLACEMENT KIT INSTALLATION
(RECALL CAMPAIGN 006G)

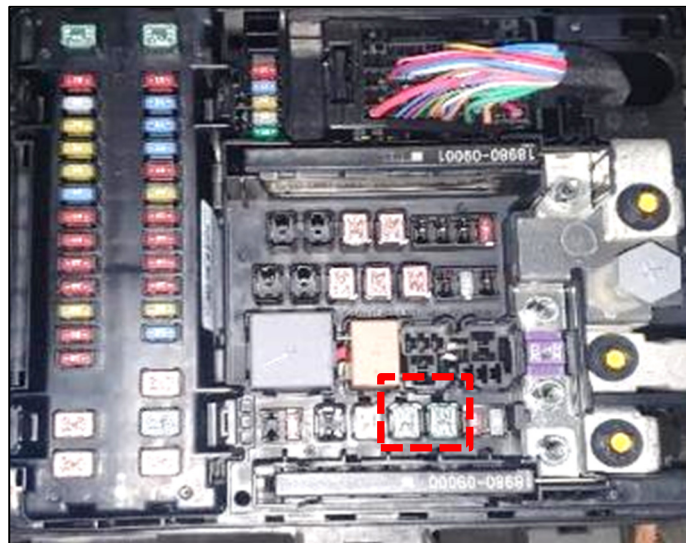
* IMPORTANT

*** Retail Vehicles ***

Dealer must perform this Recall Campaign whenever an affected vehicle is in the shop for any maintenance or repair.

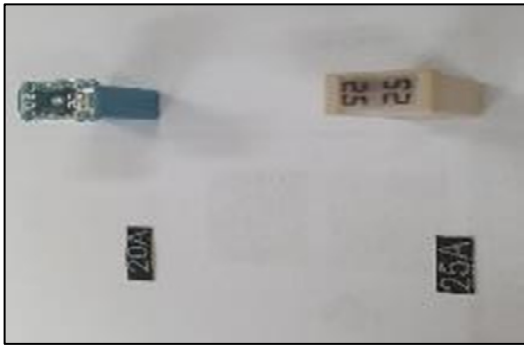
When a vehicle arrives at the Service Department, access Genesis Motor America's "Warranty Vehicle Information Screen (VIS)" via WEBDCS to identify open Campaigns.

Description: An electrical short in the hydraulic electronic control unit (HECU) may increase the risk of an engine compartment fire. This bulletin describes the procedure to install replacement fuses.



Applicable Vehicles: Certain 17-18MY G80 (DH) vehicles produced from March 17, 2016 to April 30, 2018.

Parts Information:

Parts Name	Part Number	Note
Repair Kit – Multifuse		1. Fuses (20A, 25A) 2. Upper Cover Sticker Labels (25A, 20A)
	91940-B1001QQH	

Warranty Information:

Model	Op. Code	Operation	Op. Time	Causal Part	Nature Code	Cause Code
G80 (DH)	11D072R0	Fuse Replacement and Label Attachment	0.2 M/H	91940-B1001QQH	I11	ZZ3

NOTE 1: Submit Claim on Campaign Claim Entry Screen.

NOTE 2: If a part that is not covered by this recall is found in need of replacement while performing Recall 006G and the affected part is still under warranty, submit a separate claim using the same Repair Order. If the affected part is out of warranty, submit a Prior Approval Request for goodwill consideration prior to performing the work.

Service Procedure:

1. If applicable, record the customer’s radio preset stations and turn the ignition switch OFF.

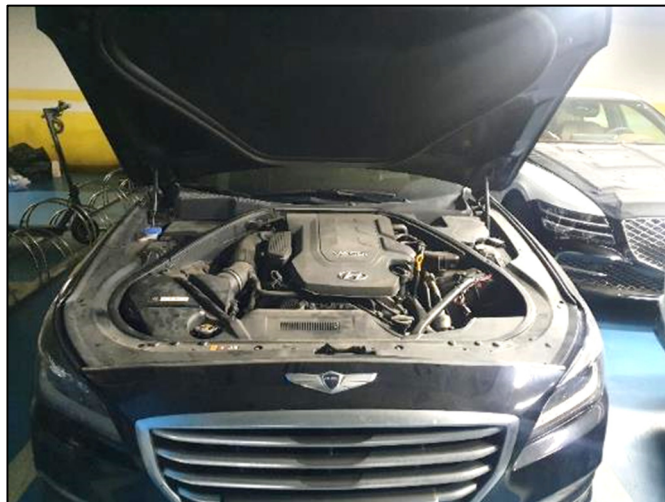
Open the trunk and remove the negative battery terminal (A) by loosening the nut.

Battery Terminal Nut Tightening Torque

lb-ft	• 2.9-4.3
kgf.m	• 0.4-0.6
N.m	• 3.9-5.9



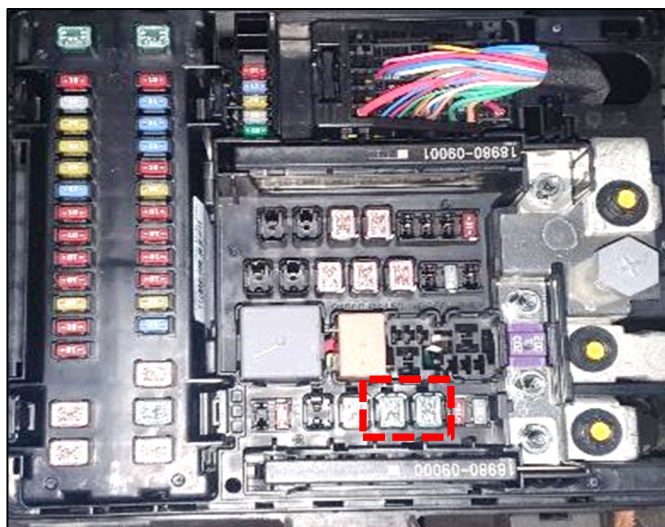
2. Open the hood.

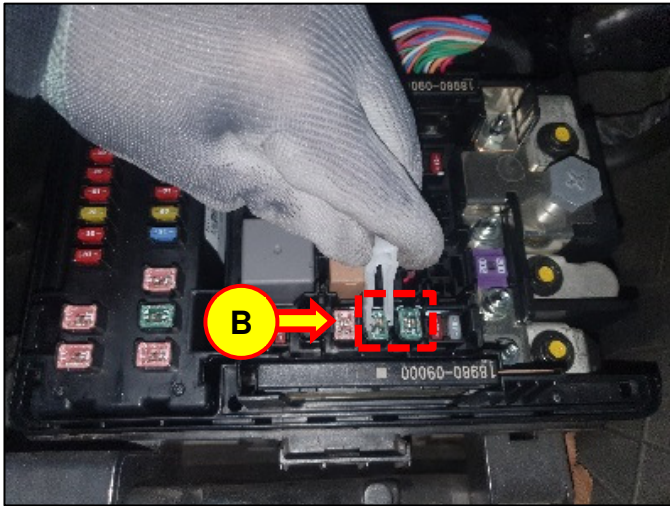


3. Remove the engine room junction box upper cover.

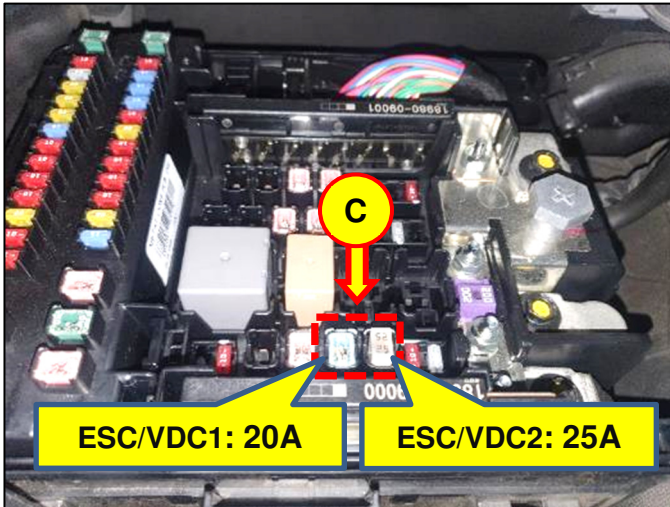


4. Remove the ESC/VDC1, ESC/VDC2 40A fuses (B).

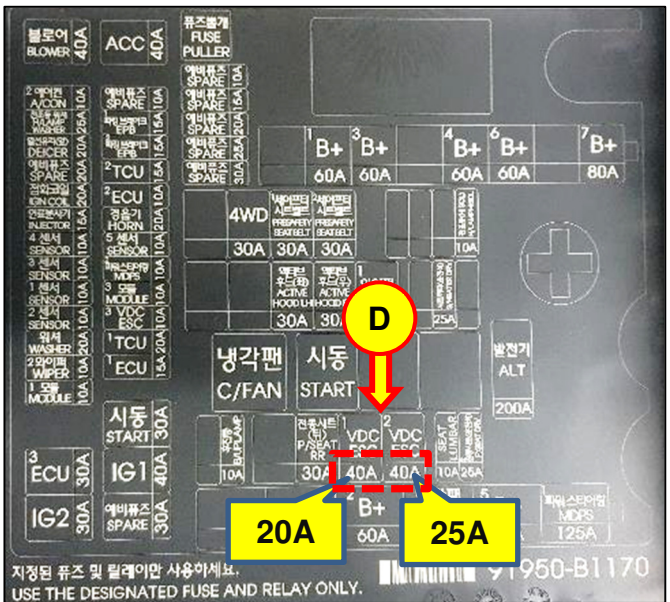




5. Install the supplied fuses (C).
- ESC/VDC1 → 20A
 - ESC/VDC2 → 25A



6. Attach the supplied sticker labels (D) to the upper fuse cover in these positions:
- ESC/VDC1: 20A
 - ESC/VDC2: 25A



7. Install the upper cover.

8. Reinstall the negative battery terminal, torque the nut to specification, and reprogram the customer's radio preset stations.

Battery Terminal Nut Tightening
Torque

lb-ft	• 2.9-4.3
kgf.m	• 0.4-0.6
N.m	• 3.9-5.9

9. The procedure is now complete.