



# RECALL

## R21BB – Installation of Floor Tracks with 3-Point Seats

**Models Affected:** Certain 2019 – 2022 model year busses with 39” or 45”, 3-point seats installed on longitudinal floor track

**Issue:** On some affected buses, fasteners used to secure the floor track may be missing reinforcement plates, resulting in a non-compliance with FMVSS 210, Seat Belt Assembly Anchorages

**Corrective Action:** Inspect each floor track joint for correct fastener installation, install new fastener(s) if necessary.

**WARNING:** Always follow all Federal, State, Local and Shop safety standards and use proper safety equipment, and thoroughly read and understand all instructions before performing these procedures.

Park bus on level surface, apply parking brake, turn off ignition key, and chock wheels.

**NOTE:** This procedure outlines the process for one section of floor track. This process must be followed for every section or joint of floor track installed in the bus.

### Inspection Instructions:

Locate the beginning and ending point of the floor track. Located within 1” of the ends of the floor track (item 1) will be capscrews (item 3). From the underside of the unit, inspect for installation of reinforcement plate (item 5), reference illustration 1.

*NOTE: Capscrews, nuts and plates are installed within 1” from each end of the track or at a track joint. Magnabulb rivets (item 2) are installed on 2” centers in all other positions*

- If fasteners are installed per illustration, no further work is required. Place bus back into service.
- If fasteners are not installed per illustration, proceed to repair instructions.

### Repair Instructions:

1. At each end of the floor track (item 1), locate and remove the existing allen head screw (item 3) and nut (item 4). These may be discarded
2. Install new allen screw (item 3), plate (item 5), and nut (item 4) per illustration 1 and torqued to 8-10 FT – LBS

*NOTE: When capscrew location falls out on top of an auxiliary crossmember use 4” capscrew 01666106*

### Items Needed:

Item	Part Number	Name	Quantity Required
1	10039024	Track, Aluminum	Reference only
2	00106565	Fastener, Huck, .31 Blind, Magnabulb	Reference only
3	01467323	Screw, Allen Head, 1/4-20 x 1.5, Countersunk, Flathead	As Needed
	01666106	Capscrew, Flathead, 1/4-20 x 4 (required thru Aux Crossmember)	
4	00659979	Nut, Hex, Flange, Ser, 1/4-20, Black Zinc	As Needed
5	01726389	Plate, Underfloor	As Needed

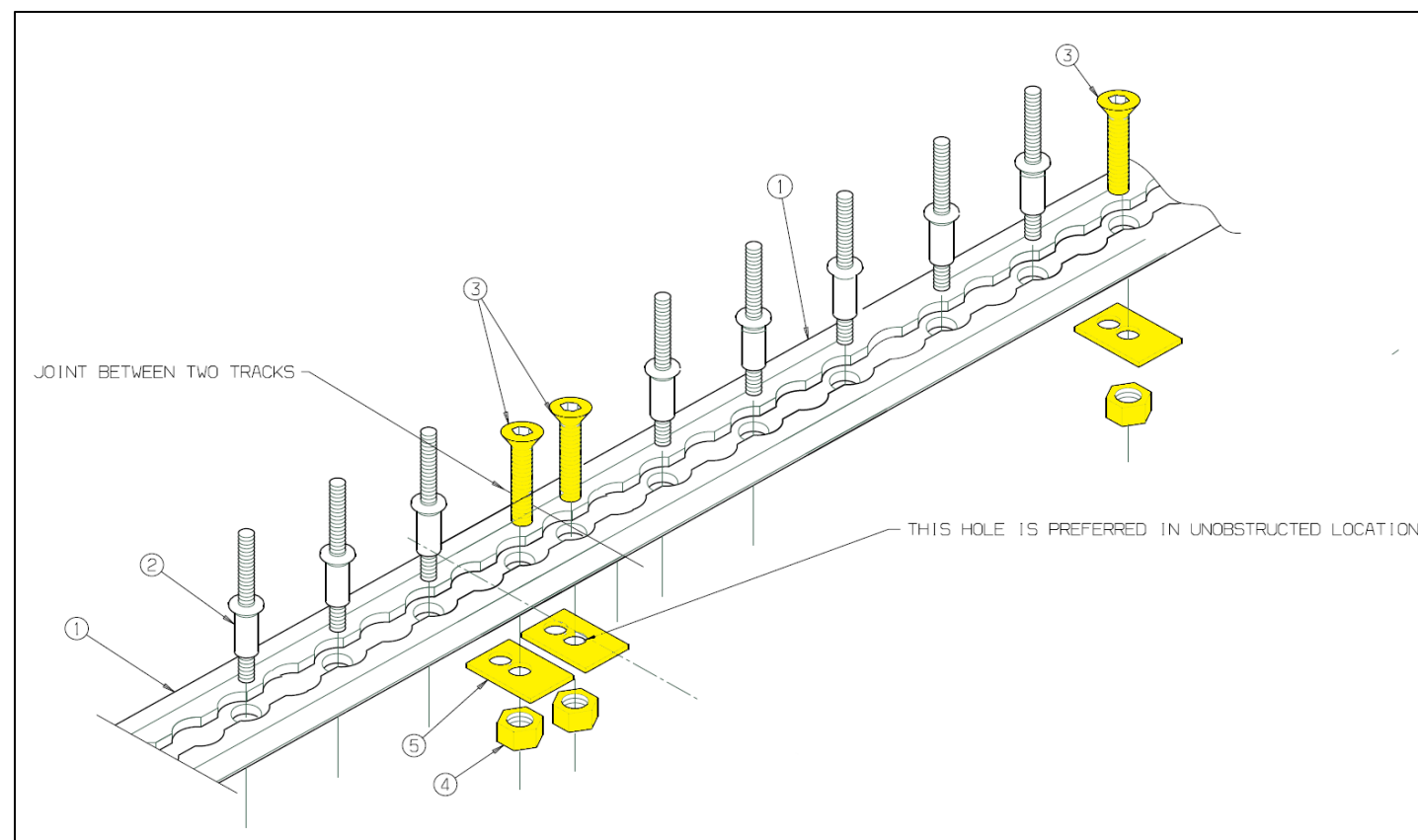


Illustration 1