



RECALL CAMPAIGN BULLETIN

Classification: FE21-002	Reference: NTB21-010	Date: February 11, 2021
-----------------------------	-------------------------	----------------------------

VOLUNTARY SAFETY/EMISSION RECALL CAMPAIGN 2021 ROGUE FUEL PUMP INSPECTION

CAMPAIGN ID #: PC791
APPLIED VEHICLES: 2021 Rogue (T33)

**Check Service COMM or Dealer Business Systems (DBS)
National Service History to confirm campaign eligibility.**

INTRODUCTION

Nissan is conducting this voluntary safety and emission recall campaign, on certain specific model year 2021 Rogue, to inspect the fuel feed tube at the fuel pump and fuel pump lock ring and, if necessary, reseal. This service will be performed at no charge to the customer for parts or labor.

IDENTIFICATION NUMBER

Nissan has assigned identification number PC791 to this campaign. This number must appear on all communication and documentation of any nature dealing with this campaign.

DEALER RESPONSIBILITY

It is the dealer's responsibility to check Service COMM or Dealer Business Systems (DBS) National Service History for the campaign status on each vehicle falling within the range of this voluntary safety/emissions recall which for any reason enters the service department. This includes vehicles purchased from private parties or presented by transient (tourist) owners and vehicles in a dealer's inventory. **Federal law requires that new vehicles in dealer inventory which are the subject of a safety recall must be corrected prior to sale. Failure to do so can result in civil penalties by the National Highway Traffic Safety Administration.** While federal law applies only to new vehicles, Nissan strongly encourages dealers to correct any used vehicles in their inventory before they are retailed.

Nissan Bulletins are intended for use by qualified technicians, not 'do-it-yourselfers'. Qualified technicians are properly trained individuals who have the equipment, tools, safety instruction, and know-how to do a job properly and safely. **NOTE:** If you believe that a described condition may apply to a particular vehicle, DO NOT assume that it does. See your Nissan dealer to determine if this applies to your vehicle.

Special Tool

- J-45747 – Fuel pump lock ring tool

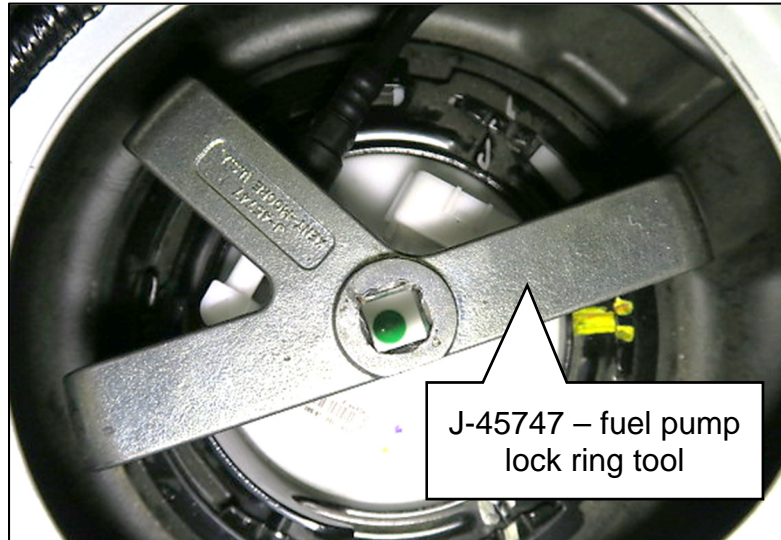


Figure 1

IMPORTANT

Attention California Dealers

An Emission Recall Campaign Completion (ERCC) label must be filled out by the technician performing the repair, and then attached to the underside of the vehicle hood. A sample of the label is shown below.

Technician: Fill in the following: "Inspected fuel feed tube and lock ring (and if performed) and adjusted lock ring [and/or] fuel feed tube per Campaign ID # PC791" or Inspected fuel feed tube and lock ring and replaced packing and [reinstalled/replaced] lock ring per Campaign ID # PC791"	<table border="1"><tr><td colspan="2">NISSAN MOTOR CORPORATION</td></tr><tr><td colspan="2">AUTHORIZED MODIFICATIONS</td></tr><tr><td colspan="2">THE FOLLOWING MODIFICATIONS HAVE BEEN MADE:</td></tr><tr><td colspan="2"> </td></tr><tr><td colspan="2">THESE MODIFICATIONS HAVE BEEN APPROVED AS APPROPRIATE BY EPA AND CARB</td></tr><tr><td>DEALER CODE:</td><td>DATE:</td></tr><tr><td>CHANGE AUTHORITY:</td><td>NIS-UHL-16</td></tr></table>	NISSAN MOTOR CORPORATION		AUTHORIZED MODIFICATIONS		THE FOLLOWING MODIFICATIONS HAVE BEEN MADE:				THESE MODIFICATIONS HAVE BEEN APPROVED AS APPROPRIATE BY EPA AND CARB		DEALER CODE:	DATE:	CHANGE AUTHORITY:	NIS-UHL-16
NISSAN MOTOR CORPORATION															
AUTHORIZED MODIFICATIONS															
THE FOLLOWING MODIFICATIONS HAVE BEEN MADE:															
THESE MODIFICATIONS HAVE BEEN APPROVED AS APPROPRIATE BY EPA AND CARB															
DEALER CODE:	DATE:														
CHANGE AUTHORITY:	NIS-UHL-16														

Fill in "DEALER CODE" and "DATE"
Put "ARB/EPA" under "CHANGE AUTHORITY"

Figure 2

California law prohibits owners from renewing their California registration if emissions related recall work has not been performed. California dealers are now required to issue a proof of correction certificate to vehicle owners upon completion of emissions related recall work. Please fill out one of the campaign completion forms for each owner that has this campaign performed. Instruct owners to keep this certificate unless they are requested to mail it to the DMV. A sample of the form is shown in Figure 3 below.

Vehicle Emission Recall - Proof of Correction				
License Number	Make	Model Year	Body Type	Vehicle Identification Number □□□□□□□□□□□□□□□□
Manufacturer _____		Recall Number _____		
The above described vehicle has been repaired, modified and/or equipped with new emission control devices to meet applicable California Emission Control Laws.				
Dealer's Name _____		Address, City, State, Zip _____		
Date _____	Dealership's Authorized Signature _____ X			
Return this certificate to DMV <u>only</u> when required - otherwise retain for your records.				
CAEMRC 1-20				

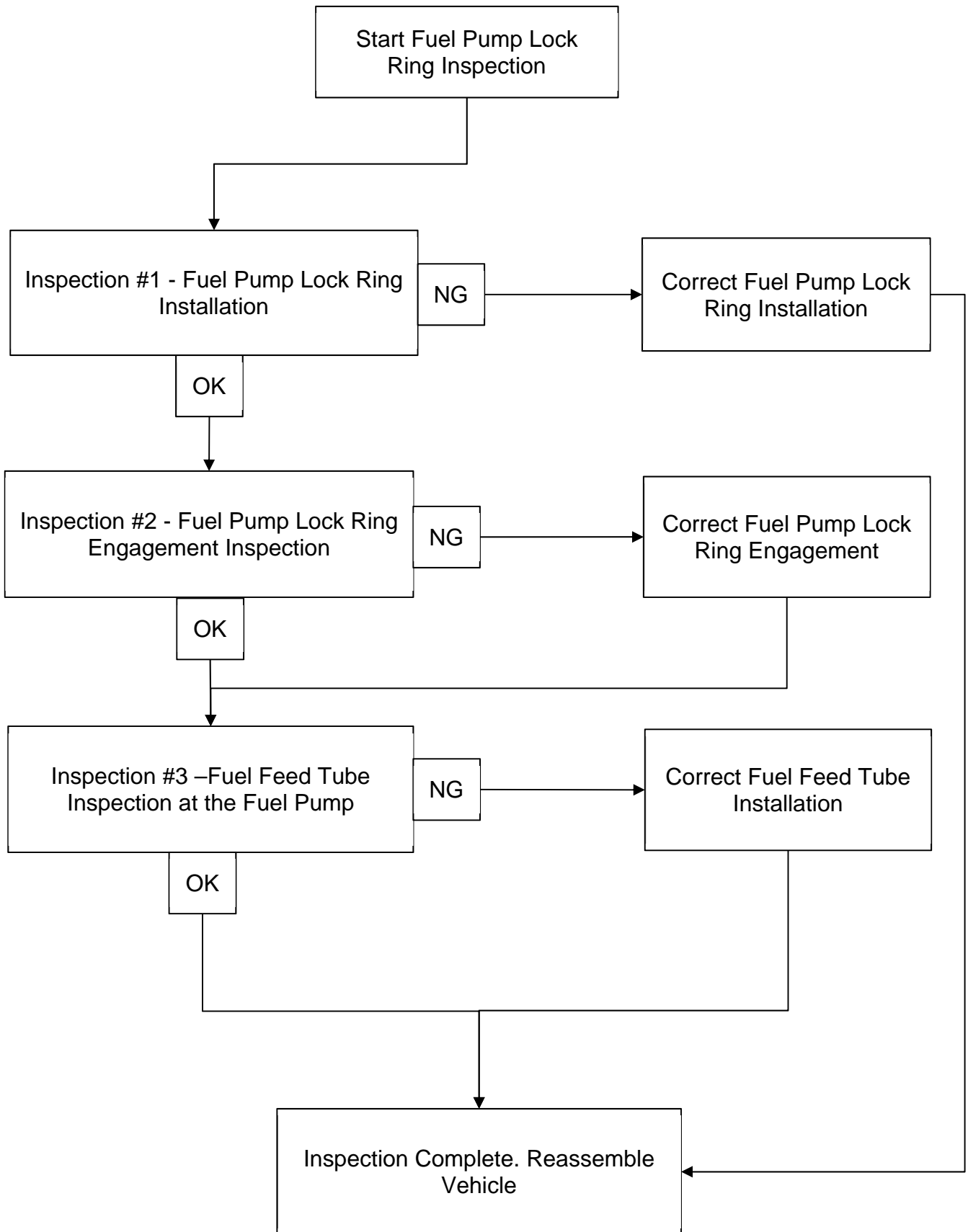
Orange colored

Figure 3

NOTE:

- These forms (item number **CAEMRC 1-20**) and labels (item number **NIS-UHL-16**) are available from Nissan Publications (1-800-247-5321) at no charge.
- When either item (form or label) is ordered, you will automatically receive the other item as well.

REPAIR OVERVIEW



SERVICE PROCEDURE

⚠ WARNING To avoid the risk of death or severe personal injury when inspecting and replacing fuel line parts, be sure to observe the following:

- Put a “WARNING: FLAMMABLE” sign in the workshop.
- Be sure to work in a well-ventilated area and furnish workshop with a CO2 fire extinguisher.
- Never smoke while servicing the fuel system.
- Keep open flames, sparks and other ignition sources away from the work area.
- Before removing fuel line parts, perform the following procedures:
 - 1) Release fuel pressure from the fuel lines. Refer to step 11.
 - 2) Disconnect the battery cable from the negative terminal.

⚠ CAUTION To avoid the risk of minor personal injury or property damage when inspecting and replacing fuel line parts, be sure to observe the following:

- Never bend or twist tubes when they are being installed.
- After installing tubes, check that there is no fuel leakage at connections in the following steps:
 - 1) Apply fuel pressure to fuel lines by turning the ignition switch “ON” (with engine stopped). Then check for fuel leakage at connections.
 - 2) Start the engine, rev it up and check for fuel leakage at connections.
- Perform the operation with vehicle on level ground.
- Disconnect the quick connector when the tabs are completely depressed.

Remove the rear seat cushion

1. Open the LH and RH rear doors.
2. Lift upward, in the areas shown in Figure 4, to disengage the seat cushion hooks.
3. Lift the seat cushion up and pull it forward.
4. Disengage the seat belt buckles.



Figure 4

5. (If equipped) Lift the seat cushion up and disengage the rear heated seat harness connectors.
6. Remove the rear seat cushion and place it in a safe clean area, to prevent staining and damage to the seat cushion.

Remove the fuel pump inspection hole cover (Figure 5)

7. Lift the carpet on the RH side of the vehicle, above the inspection hole cover.
8. Using a suitable tool, turn the three (3) inspection hole cover clips clockwise 90 degrees.
9. Lift the inspection hole cover and disconnect the fuel pump harness connector.
10. Move the inspection hole cover to the side.

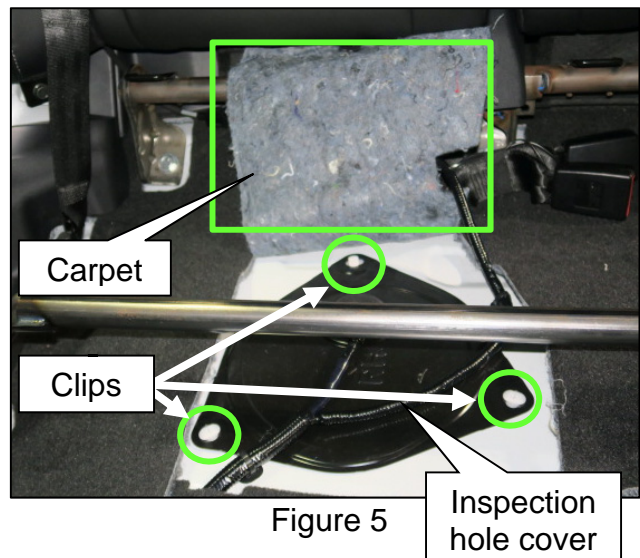


Figure 5

Release fuel pressure

11. With the fuel pump connector disconnected, start the engine and allow the engine to run until the engine stops.
12. Crank the engine several times to ensure fuel pressure has been released.

Inspection #1 – Fuel Pump Lock Ring Installation

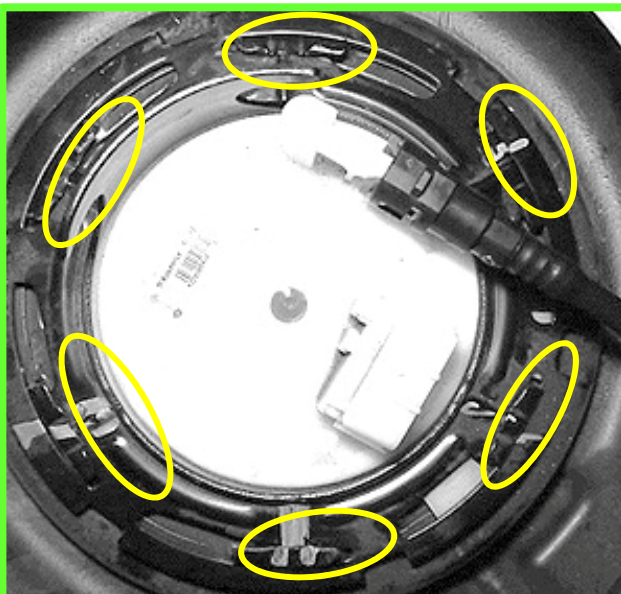
NOTE: Do not remove the fuel pump assembly from the fuel tank for this adjustment.

IMPORTANT:

- To reduce the impact caused by the removal operation, use a long spinner handle [handle length: 60 cm (23.62 in) or more] and slowly turn it counterclockwise.
- To prevent the lock ring wrench from being detached, securely hold down the spinner handle by hand.

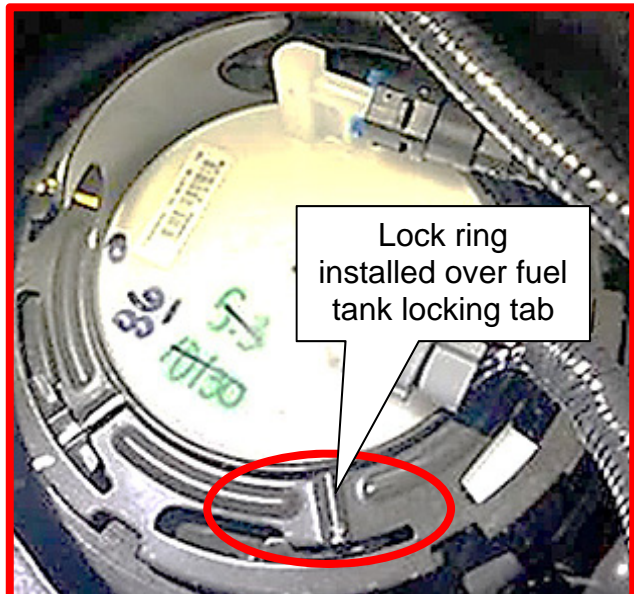
13. Verify the fuel pump lock ring is installed/engaged correctly (Figure 6).

- Make sure the fuel pump lock ring is correctly installed with all locking tabs engaged with the lock ring.
 - If the fuel pump lock ring **IS** installed correctly, as shown in Figure 6, skip to Step 26 on page 9.
 - If the fuel pump lock ring is **NOT** installed correctly, as shown in Figure 7, continue to step 14 on page 8 to replace the fuel pump packing (O-ring) and correctly install the fuel pump lock ring.



Correctly engaged

Figure 6



NG

Figure 7

NOTICE Use a protective covering to prevent fuel from contacting the interior of the vehicle during fuel tube removal.

Remove and correctly install the fuel pump lock ring

14. Disconnect the fuel feed tube by depressing the tabs and pulling out on the fuel feed tube.

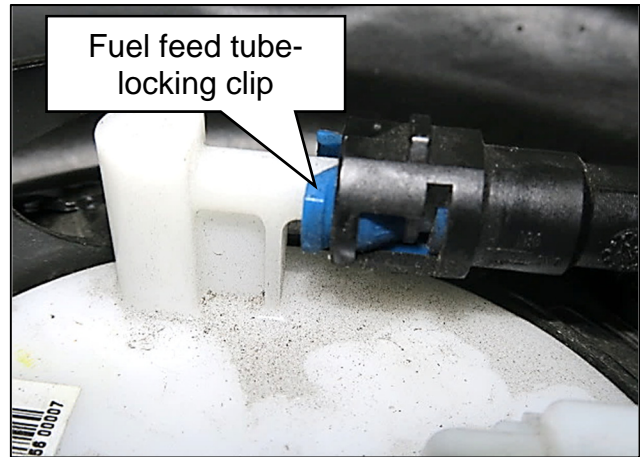


Figure 8

15. Using special tool J-45747, disengage the fuel pump lock ring.
16. Remove the fuel pump lock ring.
17. Inspect the lock ring for deformations. If any are found replace the lock ring.
18. Remove the fuel pump O-ring by moving the fuel pump to one side, and carefully working the O-ring over the top of the fuel pump assembly.
 - Do not remove the fuel pump from the tank.
19. Install a NEW fuel pump O-ring over the fuel pump and into the groove on the fuel tank.
20. Center the fuel pump in the fuel tank.
21. Align the fuel pump lock ring onto the fuel tank locking tabs.
22. Make sure all six (6) locking tabs are aligned within the lock ring.

23. Rotate the fuel pump lock ring until the raised portion of the lock ring is engaged into the groove of the fuel tank locking tab (Figure 9).

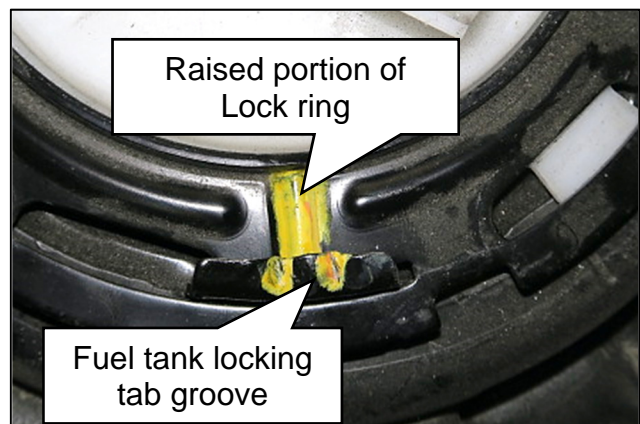


Figure 9

24. Align the tabs on the locking clip with the grooves in the fuel feed tube and push the fuel feed tube onto the fuel pump assembly until a click sound is heard.
25. Inspection complete, skip to step 31 on page 10.

Inspection #2 – Fuel Pump Lock Ring Engagement Inspection

26. Verify the fuel pump lock ring is fully engaged.

- Be sure the raised portion on the fuel pump lock ring is resting in the groove of the fuel tank locking tab shown in Figure 10.
 - If the lock ring **IS** positioned correctly (Figure 10), continue to step 27 on page 10.
 - If the lock ring is **NOT** positioned correctly (Figure 11), use fuel pump lock ring tool J-45747 to correctly position the lock ring, and then continue to step 27 on page 10.

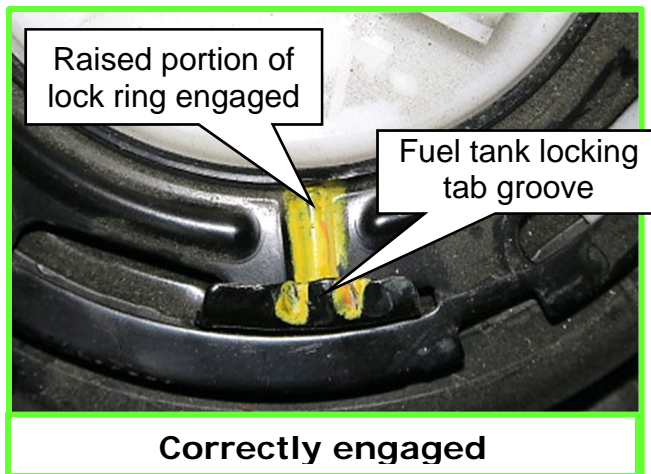


Figure 10



Figure 11

NOTICE Use a protective covering to prevent fuel from contacting the interior of the vehicle during fuel tube removal.

Inspection #3 – Fuel Feed Tube Inspection at Fuel Pump

27. Inspect the fuel feed tube connection at the fuel pump.
- Verify the blue fuel feed tube locking clip is fully installed into the fuel feed line by pulling back on the fuel feed tube (Figure 12).
 - If the fuel feed tube **IS** secured correctly, skip to step 31 on page 10.
 - If the fuel feed tube is **NOT** correctly secured, continue to step 28 to secure the fuel feed line.

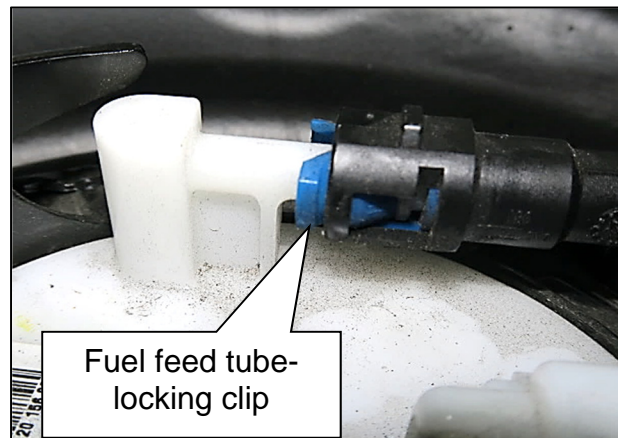


Figure 12

Remove and reinstall the fuel feed line at the low pressure fuel pump

28. Disconnect the fuel feed tube by depressing the tabs and pulling out on the fuel feed tube.
29. Align the tabs on the locking clip with the grooves in the fuel feed tube and push the fuel feed tube onto the fuel pump assembly until a click sound is heard.
30. Pull back on the fuel feed tube to verify it is secured correctly.

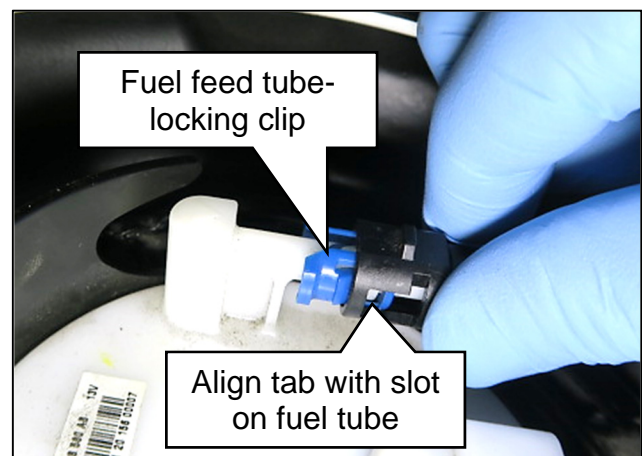


Figure 13

31. Reassemble the vehicle in the reverse order of disassembly.
- IMPORTANT:** When installing the seat cushion, confirm that all of the seatbelt buckles are properly positioned.
32. Using C-III plus, Erase All DTCs.

PARTS INFORMATION

DESCRIPTION	PART NUMBER	QUANTITY
PLATE-LOCK,FUEL GAUGE	17343-6RR0A	1 (*)
PACKING-FUEL GAUGE	17342-6RR0A	1 (*)

*The replacement rate of this part is very low, only order in cases part is in need of replacement.

CLAIMS INFORMATION

Submit a "CM" line claim using the following claims coding:

CAMPAIGN ("CM") ID	DESCRIPTION	OP CODE	FRT
PC791	Inspect fuel feed tube and lock ring and if necessary, adjust lock ring and/or fuel feed tube	PC7910	0.6 hr
	Inspect fuel feed tube and lock ring, replace packing and reinstall/or replace lock ring	PC7911	0.7 hr

AMENDMENT HISTORY

PUBLISHED DATE	REFERENCE	DESCRIPTION
February 11, 2021	NTB21-010	Original bulletin published