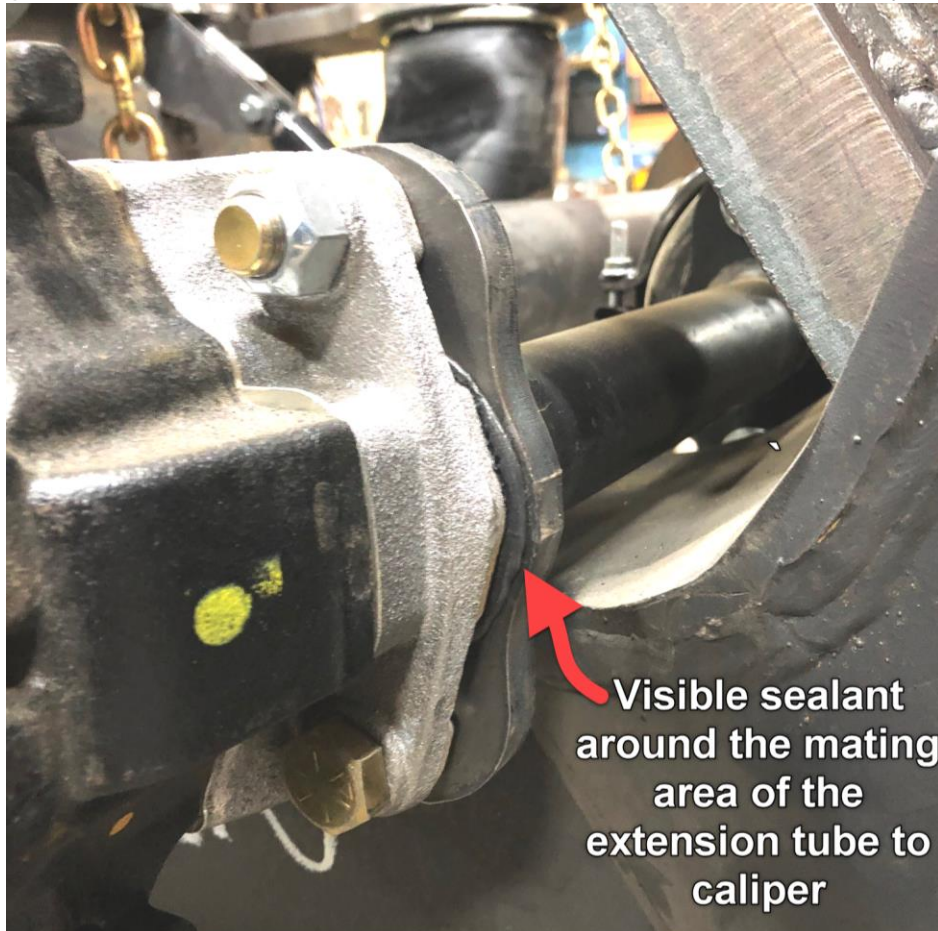


Disc Brake Extension Tube sealant inspection.

- Inspect the area where the extension tube seats on the caliper for sealant, if sealant is present as shown in the photo below there is no need to remove the extension tube or do any repair.

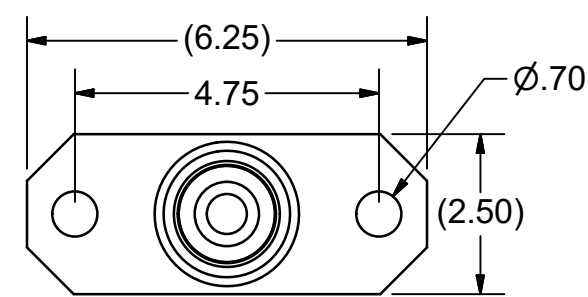
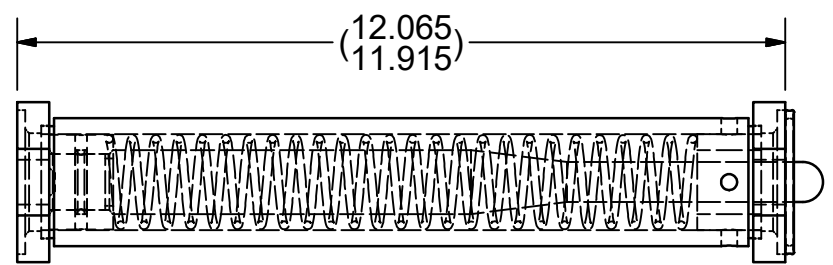
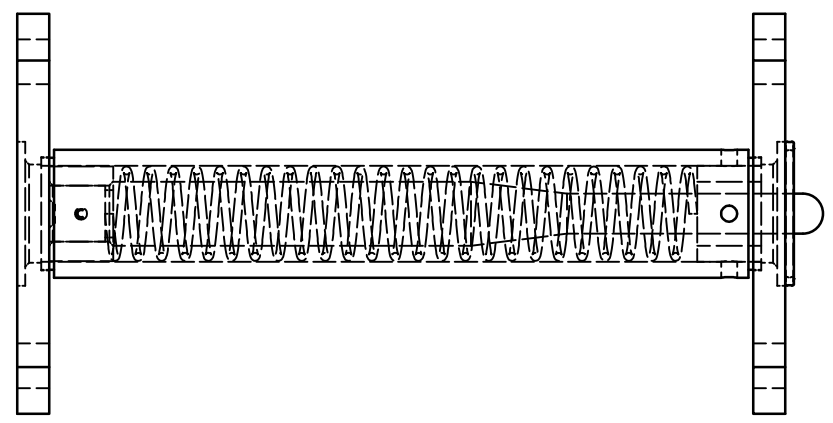
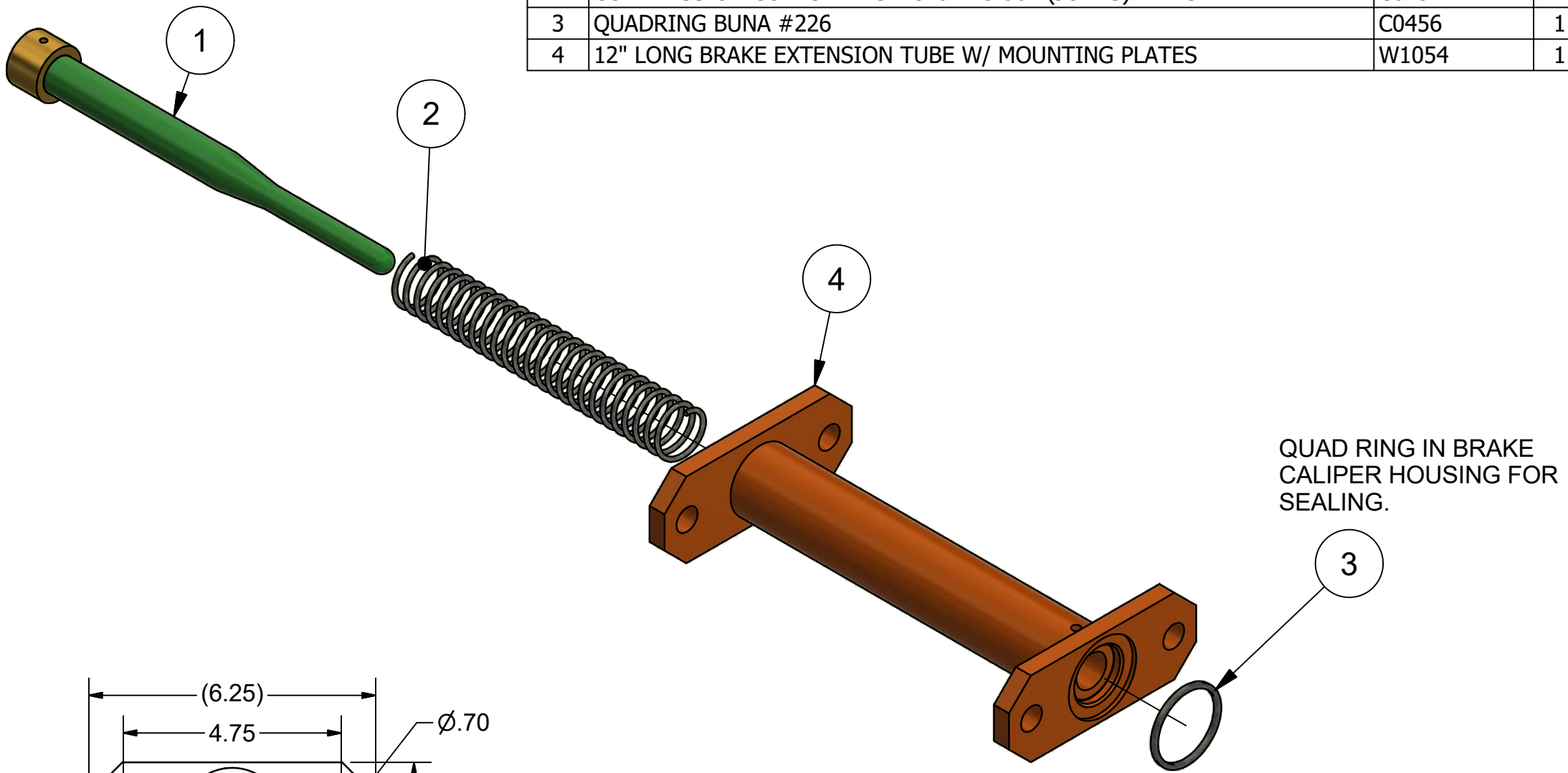


- If there is no sealant present in the exterior inspection, the extension tube should be removed and verify the sealant is missing.
- If there is no sealant, inspect the caliper fulcrum area for water intrusion or evidence of water.
- If there is evidence of water intrusion or corrosion contact Trail King Customer service for further repair procedures and caliper replacement.
- If no water intrusion or corrosion is present follow the sealing procedure K0590-12 attached.



DISCLAIMER: CUSTOMER IS RESPONSIBLE FOR PROPER SEALING AGAINST WATER INTRUSION FROM DISC BRAKE EXTENSION TUBE TO CALIPER AND TO BRAKE CHAMBER. CUSH ASSUMES NO WARRANTY LIABILITY FROM WATER INTRUSION INTO DISC BRAKE CALIPER HOUSING. PER revF SHEET 3 SUGGESTION


PARTS LIST			
ITEM	DESCRIPTION	PART NUMBER	QTY
1	12" BRAKE EXTENSION ROD W/ BUSHING INSTALLED AND END MACHINED	A0102	1
2	COMPRESSION COIL SPRING #C48-125-384 (JONES) 12"LG	C0452	1
3	QUADRING BUNA #226	C0456	1
4	12" LONG BRAKE EXTENSION TUBE W/ MOUNTING PLATES	W1054	1



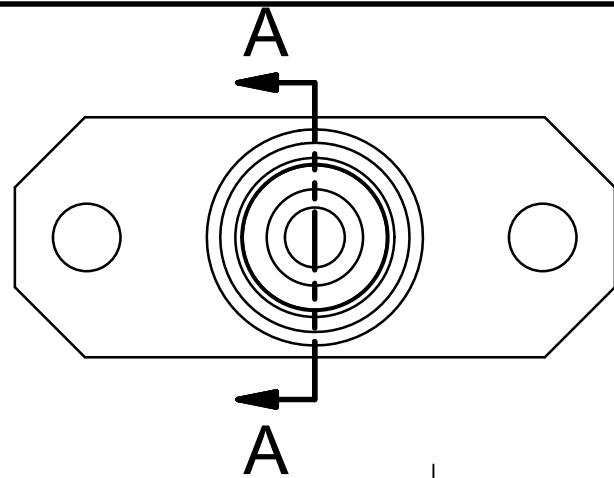
QUAD RING IN BRAKE CALIPER HOUSING FOR SEALING.

NOTES:
 ASSEMBLY NOTE:
 1. LUBRICATE W/ ANTI-SEIZE ON INSIDE OF HOUSING 4" DEEP FROM CHAMBER SIDE, NO CONTACT WITH SEALING SURFACES
 2. PAINT SPRING (C0452) W/ BLACK SPRAY PAINT AND LET DRY BEFORE ASSEMBLY
 SHIPPING NOTE:
 3. PACK 1 QUADRING (C0456) IN A BAG, OR BULK PACKAGE PER ORDER
 QC NOTE:
 4. SEE WI-6620_K0590-12 & WI-6520 (REF WI-6622)
 5. QC TO CHECK AND RECORD DATA IN WIX-6620-K0590-12

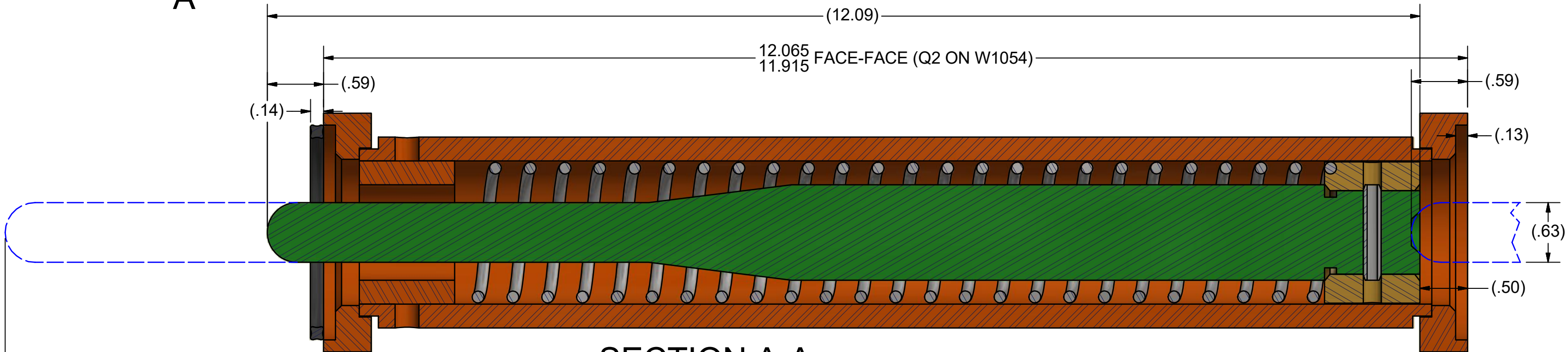
DCN#	REV	REVISION DESCRIPTION	DATE	BY	CHK	APP
	F	ADDED SHEET 3, REMOVED 1 QUADRING AND BOTH GASKETS	8/14/18	DJW		
	E	ADDED 2x C0720	8/8/18	DJW		
	D.1	UPDATED TOLERANCES PER Cpk STUDY	7/19/18	DJW		

DRAFTSMAN: DWALKER	7/16/2018	TITLE:				
CHECKED: CHK		12" LONG DISK BRAKE CHAMBER EXTENSION KIT				
RELEASED: APP						
WEIGHT: N/A						
MATERIAL:			TOLERANCE UNLESS OTHERWISE STATED: .XX = +/- .06 FRACTIONS = +/- 1/16 .XXX = +/- .031 ANGLES = +/- 1°			
ALL OF THE INFORMATION SHOWN HEREIN IS THE INTELLECTUAL PROPERTY OF CUSH CORP AND IS SUBMITTED ONLY ON A CONFIDENTIAL BASIS. THE RECIPIENT AGREES THAT NO DISCLOSURE OF THIS INFORMATION WILL BE MADE TO A THIRD PARTY WITHOUT WRITTEN CONSENT OF CUSH CORP.		PROJECT NO: 11176	SHEET: 1 OF 3	SCALE: A-SIZE: NTS B-SIZE: 1/2 D-SIZE: 1/X	REV: F	DRAWING(PART) NO: K0590-12

Nixa, MO. USA
 PHONE: 417-724-1239
 www.cushcorp.com



DISCLAIMER: CUSTOMER IS RESPONSIBLE FOR PROPER SEALING AGAINST WATER INTRUSION FROM DISC BRAKE EXTENSION TUBE TO CALIPER AND TO BRAKE CHAMBER. CUSH ASSUMES NO WARRANTY LIABILITY FROM WATER INTRUSION INTO DISC BRAKE CALIPER HOUSING.
PER revF SHEET 3 SUGGESTION



**SECTION A-A
SCALE 1 / 1**

- Q1**
1. QC CHECK TO PUSH INNER PIN SO END STICKS OUT 2.7"
 2. IF PASS Q1 TEST APPLY CUSH SERIAL TAG & LOG IN QC BOOK

DCN#	REV	REVISION DESCRIPTION	DATE	BY	CHK	APP
	F	ADDED SHEET 3, REMOVED 1 QUADRING AND BOTH GASKETS	8/14/18	DJW		
	E	ADDED 2x C0720	8/8/18	DJW		
	D.1	UPDATED TOLERANCES PER Cpk STUDY	7/19/18	DJW		

DRAFTSMAN: DWALKER 7/16/2018
 CHECKED: CHK
 RELEASED: APP
 WEIGHT: N/A
 MATERIAL:


TITLE:
**12" LONG DISK BRAKE CHAMBER
 EXTENSION KIT**

ALL OF THE INFORMATION SHOWN HEREIN IS THE INTELLECTUAL PROPERTY OF CUSH CORP AND IS SUBMITTED ONLY ON A CONFIDENTIAL BASIS. THE RECIPIENT AGREES THAT NO DISCLOSURE OF THIS INFORMATION WILL BE MADE TO A THIRD PARTY WITHOUT WRITTEN CONSENT OF CUSH CORP.

TOLERANCE UNLESS OTHERWISE STATED:
 .XX = +/- .06 FRACTIONS = +/- 1/16
 .XXX = +/- .031 ANGLES = +/- 1°

PROJECT NO: **11176**
 SHEET: **2** OF **3**
 SCALE: **A-SIZE: NTS**
B-SIZE: 1/2
D-SIZE: 1/X

REV: **F**



Nixa, MO. USA
 PHONE: 417-724-1239
 www.cushcorp.com

DRAWING(PART) NO:
K0590-12



< REF OF SQUISH PATTERN (CALIPER SIDE)

^ STEP 1: 1/4" BEAD IN STEP (CALIPER SIDE)

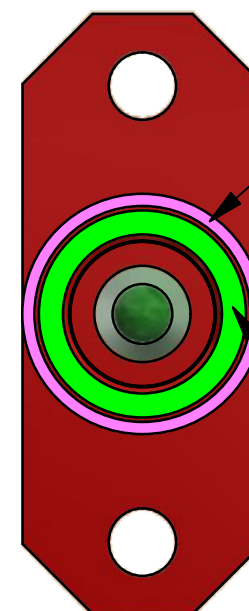
^ STEP 2: 1/8" BEAD AROUND HOLE (CALIPER SIDE)

CUSH RECOMMENDED SEALING NOTES

DISCLAIMER: CUSTOMER IS RESPONSIBLE FOR PROPER SEALING AGAINST WATER INTRUSION FROM DISC BRAKE EXTENSION TUBE TO CALIPER AND TO BRAKE CHAMBER. CUSH ASSUMES NO WARRANTY LIABILITY FROM WATER INTRUSION INTO DISC BRAKE CALIPER HOUSING.

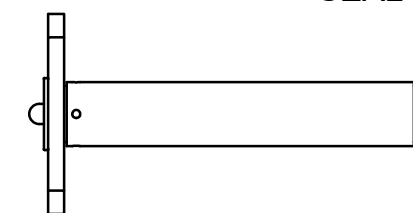
PER revF SHEET 3 SUGGESTION

ORING TURNED OFF FOR VISIBILITY

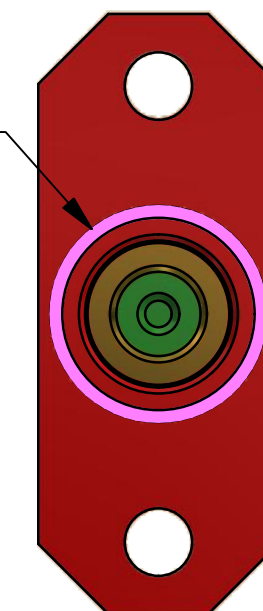


1/8" BEAD AROUND HOLE FOR SEALING

1/8" BEAD IN STEP TO SEAL AGAINST CHAMBER SEAL



1/4" BEAD IN STEP TO SEAL AGAINST QUADRING IN CALIPER HOUSING



THIS IS CALIPER SIDE

THIS IS CHAMBER SIDE

v STEP 1: 1/8" BEAD IN STEP (CHAMBER SIDE)



v REF OF SQUISH PATTERN (CHAMBER SIDE)



	F	ADDED SHEET 3, REMOVED 1 QUADRING AND BOTH GASKETS	8/14/18	DJW		
	E	ADDED 2x C0720	8/8/18	DJW		
	D.1	UPDATED TOLERANCES PER Cpk STUDY	7/19/18	DJW		
DCN#	REV	REVISION DESCRIPTION	DATE	BY	CHK	APP

DRAFTSMAN: DWALKER	7/16/2018
CHECKED: CHK	
RELEASED: APP	
WEIGHT: N/A	
MATERIAL:	

TITLE:	
12" LONG DISK BRAKE CHAMBER EXTENSION KIT	



Nixa, MO. USA
PHONE: 417-724-1239
www.cushcorp.com

ALL OF THE INFORMATION SHOWN HEREIN IS THE INTELLECTUAL PROPERTY OF CUSH CORP AND IS SUBMITTED ONLY ON A CONFIDENTIAL BASIS. THE RECIPIENT AGREES THAT NO DISCLOSURE OF THIS INFORMATION WILL BE MADE TO A THIRD PARTY WITHOUT WRITTEN CONSENT OF CUSH CORP.

TOLERANCE UNLESS OTHERWISE STATED:			
.XX = +/- .06	FRACTIONS = +/- 1/16		
.XXX = +/- .031	ANGLES = +/- 1°		
PROJECT NO:	SHEET:	SCALE:	REV:
11176	3 OF 3	A-SIZE: NTS B-SIZE: 1/2 D-SIZE: 1/X	F

DRAWING(PART) NO:
K0590-12

FOR SEALING EXTENSION TUBE USE PERMATEx "THE RIGHT STUFF" (#85224)
 1. ALL MATING FACES SHOULD BE CLEANED AND DRIED (BRAKE EXTENSION TUBE, CALIPER MOUNT, AND BRAKE CHAMBER)
 2. USE A 1/8"-1/4" CONTINUOUS BEAD AS SHOWN ABOVE
 3. ASSEMBLE PARTS WITHIN 5 MINUTES
 READ AND FOLLOW DIRECTIONS ON CAN FOR PROPER INSTALLATION.
 VIEW TECHNICAL DATA SHEET FOR MORE INSTRUCTIONS AND NOTES
https://www.permatex.com/tech-documents-results/?doc_num=85224