



Subject: Battery Compartment Cable Routing Inspection & Correction			
Field Change Program: Field Campaign	FCP Number: 491	Revision: A	Date: 02/22/2021
Coach Section: 07-Electrical	P/N: N/A		Type: Safety Recall

Ref. NHTSA Recall No.: 21V-063	Ref. Transport Canada Recall No.: 2021-058
--	--

Application:

Coach Model	Model Year	VIN
J4500	2018 - 2021	68400, 68468 - 68513, 68515 - 68535, 68537 - 68559, 68562 - 68605, 68607 - 68614, 68616, 68617, 68619 - 68657, 68659 - 68677, 68679 - 68690, 68692 - 68697, 68699 - 68716, 68718, 68720, 68722 - 68740, 68742 - 68745, 68747 - 68771, 68773 - 68802, 68804 - 68871, 68873 - 68876, 68878 - 68891, 68895, 68898 - 68906, 68908, 68910 - 68930, 68933, 68936 - 68964, 68966 - 68998, 69001 - 69029, 69031 - 69101, 69103 - 69145, 69148 - 69195, 69197 - 69222, 69224 - 69236, 69238 - 69260, 69262 - 69293, 69295 - 69300, 69302 - 69340, 69342, 69344 - 69348, 69350 - 69394, 69396 - 69407, 69409 - 69430, 69432 - 69445, 69449, 69456 - 69458, 69461 - 69490, 69493 - 69496, 69498 - 69504, 69507, 69515 - 69566, 69569 - 69574, 69577, 69578, 69581 - 69584, 69587 - 69590, 69592 - 69625, 69627 - 69631, 69633 - 69642, 69644 - 69672, 69679 - 69696, 69699 - 69705, 69707, 69708, 69710 - 69721, 69723 - 69754, 69759 - 69765, 69768 - 69770, 69773, 69774, 69782, 69785 - 69794, 69803 - 69811, 69814 - 69819, 69821 - 69825, 69827, 69834 - 69839, 69863, 69875 - 69880, 69885, 69895, 69896, 69926, 69927, 69930 - 69935, 69937, 69938, 69945 - 69948
45DCRLE	2018 - 2020	68691, 68717, 81000 - 81087, 81088, 81089

This field campaign does not necessarily apply to all the above-mentioned coaches. The owners of the coaches affected by this field campaign will be advised by a letter indicating the Vehicle Identification Number (VIN) of each applicable coach.

 **WARNING**

Read this entire procedure before beginning work.

Use Safe Shop Practices at All Times.

To avoid personal injury:

- a. Proper Personal Protective Equipment (PPE) must be worn. Safety glasses and protective gloves are required for working with DEF Fluid.*
- b. Turn the main battery disconnect switch to the OFF position.*
- c. Ensure that both the front and the rear wheels are chocked.*
- d. Position the ENGINE RUN and ENGINE START switches on the engine compartment remote control box to the OFF position.*
- e. Allow enough time for components to cool down prior to working in the engine compartment.*

1.0 Description

This is to inform you that your vehicle may contain a defect that could affect the safety of a person.

Power cables with inadequate clearance from other items of equipment, may chafe which increases the potential for vehicle fire.

Customer complaint:

Motor Coach Industries (MCI) has become aware that, on certain J4500 and 45DCRLE coaches power cables in battery compartment may potentially come in contact with a few metal edges and chafe.

Cause:

Cables are improperly secured in battery compartment.

Corrective action:

MCI recommends owners of the affected coaches have the following procedure performed to inspect cable routing in battery compartment and rework if required.

2.0 Material requirements

ITEM	PART NO	QTY	U/M	DESCRIPTION
1	21-7201-8	1	FT	Trimlock-Aluminum
2	6486917	1	EA	Nut- Acorn 1/4-20 5/16" Nylon
3	19-11-259	2	EA	Tyrap-13.38" Long

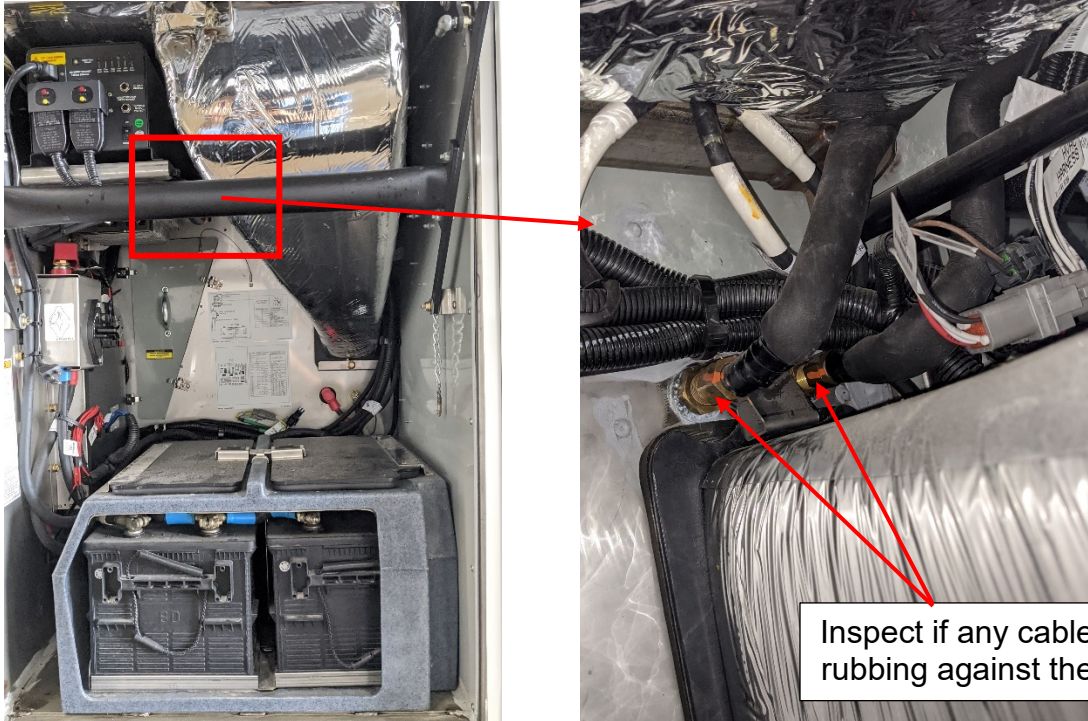
Refer to Sections 5.1.1, 5.2.1, and 5.3.1 for additional material

3.0 Special tools

No special tools required.

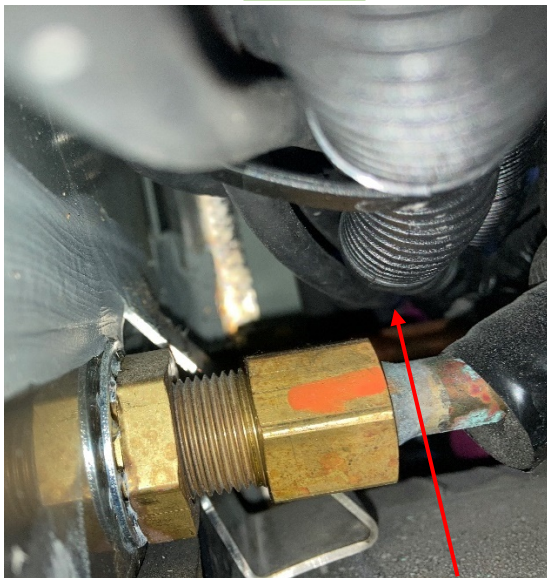
4.0 Inspection

Open battery compartment door and verify if any of the power cables are in contact with or are rubbing against the parcel rack A/C line copper fittings.



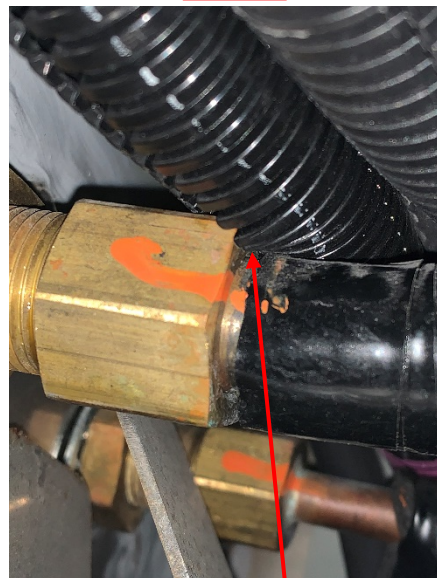
If cables are found to be touching or rubbing on the copper lines, refer to Section 5.1 for routing correction.

Good



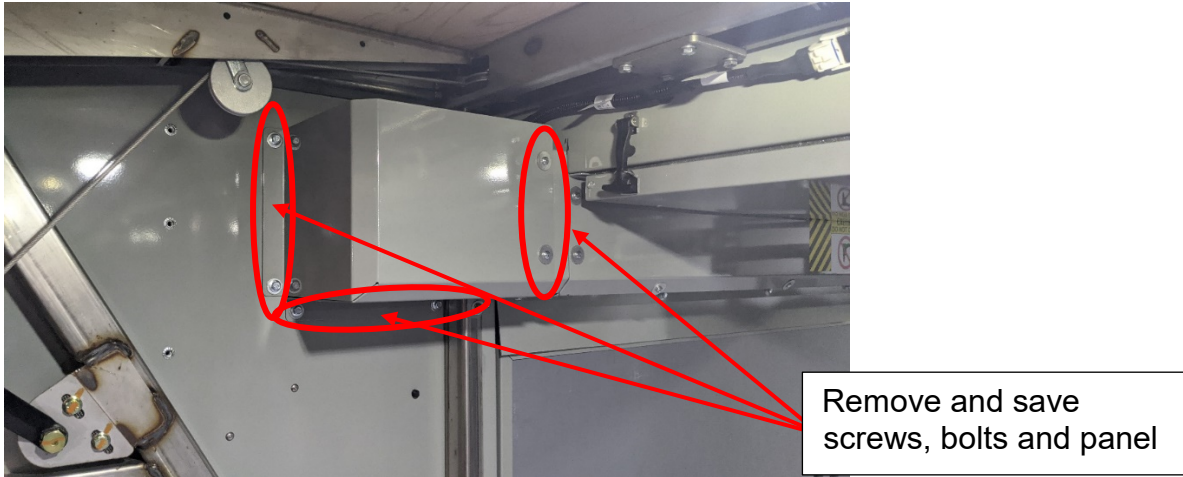
Gap between cables and fitting.
Continue with next steps of inspection

Bad

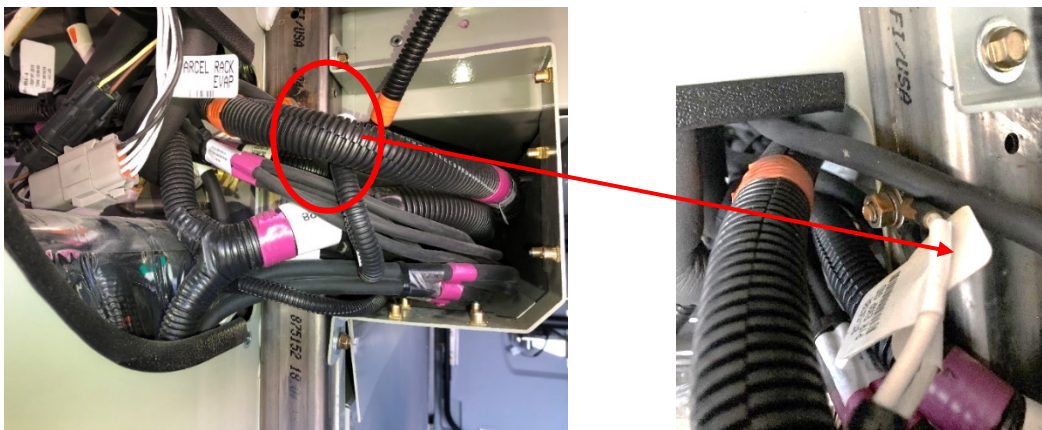


Cable touching copper fitting. Refer to Section 5.1 for routing correction

In baggage bay #3 compartment, remove and save five bolts and two screws securing the battery compartment access panel. Save the panel.



Inspect to see if cables are unsecured and close to the ground stud on the coach frame.



If the cables are unsecured, refer to Section 5.2 for routing correction.

Good

Bad

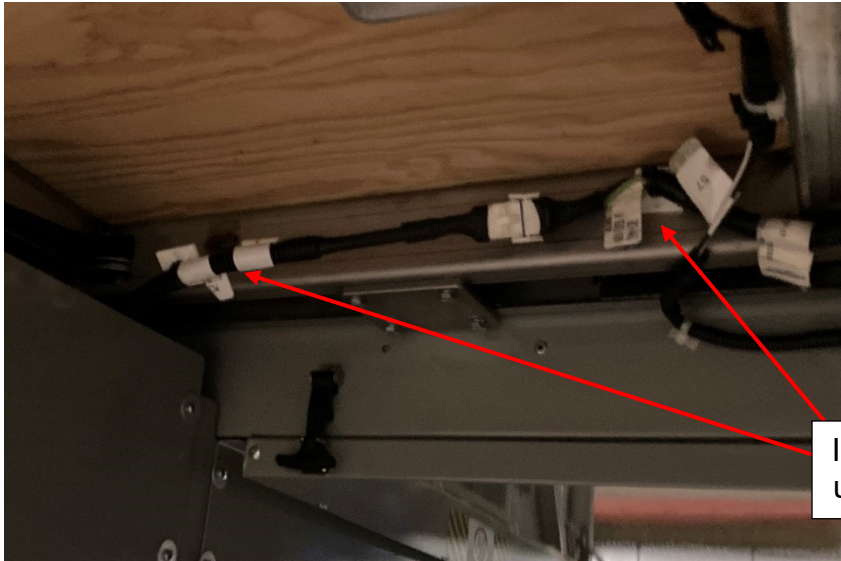


Gap between cables and ground stud. Continue with next steps of inspection



Cable close to ground stud. Refer to Section 5.2 for routing correction

Inspect to see if the adhesive tie bases securing the 110V harness in baggage bay #3 compartment are still intact.

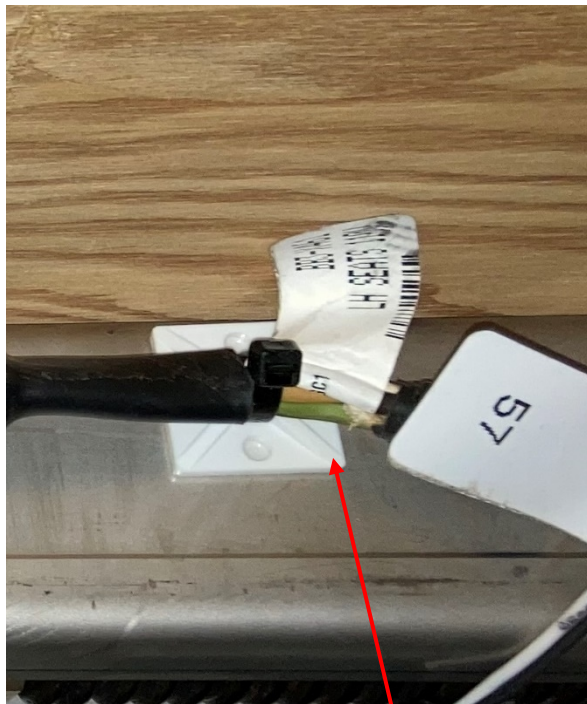


Inspect adhesive tie bases used to secure 110V harness

If the adhesive tie base are failed, refer to Section 5.3 for routing correction. Otherwise, inspection is completed.

Good

Bad



Adhesive base intact. Inspection completed.



Adhesive base failed. Refer to section 5.3 for rework

5.0 Cable routing correction

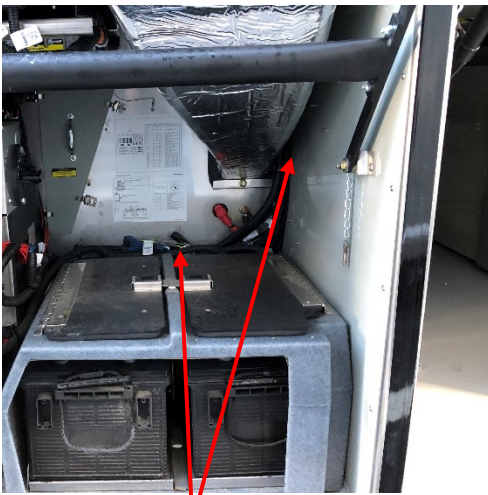
5.1 Battery compartment

5.1.1 Material requirements

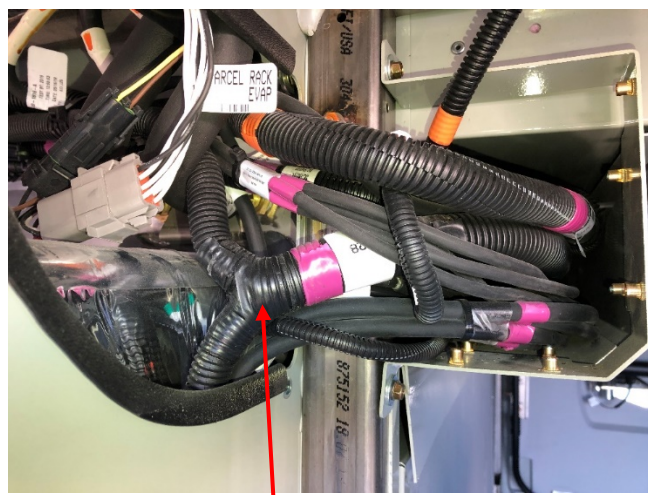
ITEM	PART NO	QTY	U/M	DESCRIPTION
1	19-11-259	10	EA	Tyrap-13.38" Long

5.1.2 Adjusting cable routing in battery compartment

Cut the cable ties as needed behind the battery box and between baggage bay panel and HVAC duct to release tension in the center tunnel harness branch going over the evaporator coolant lines. Pull the center tunnel harness nearly 2" up.

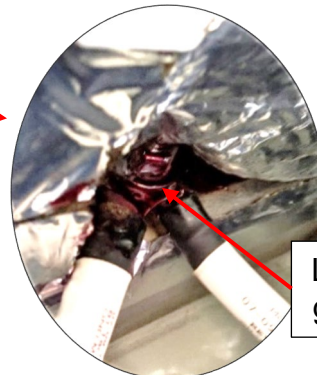


Cut the cable ties as needed



Release the tension in center tunnel harness branch and pull it up by 2"

Loosen the ground cable stud and pull the ground cables outboard.



Loosen the ground stud

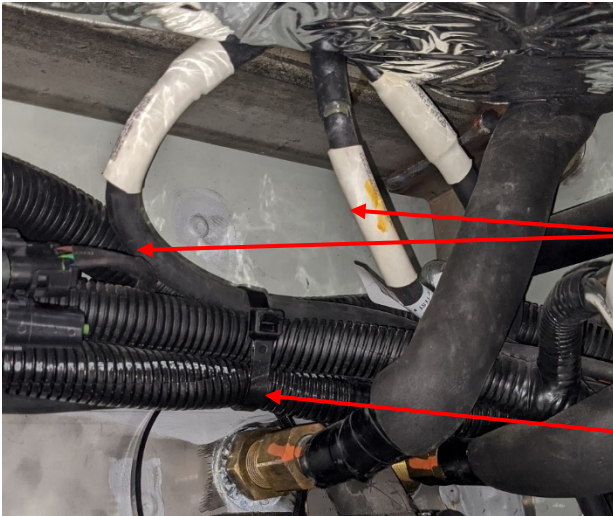
Pull ground cables outboard

Tighten the cable tie securing the cables and move the cables as high as possible.



Tighten the cable tie by pushing the cables high

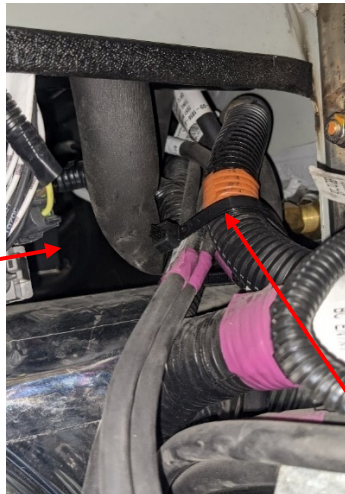
Re-secure the cables using a cable tie, MCI P/N: 19-11-259, ensuring the ground cables are outboard. Torque the ground stud to 19 Ft-Lbs.



Ground cables

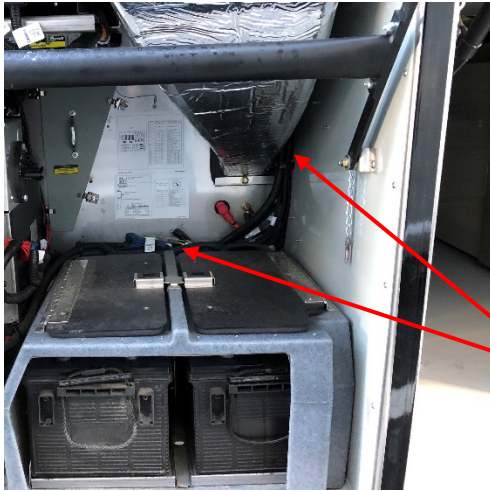
Re-secure the cables using cable tie

Pull the cables together and secure them with a cable tie, MCI P/N: 19-11-259, so that they move away from the fitting in the battery compartment.



Secure the cables with a cable tie

Secure the cables in battery compartment as required using cable ties, MCI P/N: 19-11-259.



Secure the cables using cable ties, 19-11-259

5.2 Ground stud

5.2.1 Material requirements

ITEM	PART NO	QTY	U/M	DESCRIPTION
1	19-11-259	1	EA	Tyrap-13.38" Long

5.2.2 Adjusting cable routing by ground stud

Pull all the cables coming out of battery compartment away from ground stud and secure them with a zip tie, MCI P/N: 19-11-259.



Secure the cables with a cable tie

5.3 110V harness

5.3.1 Material requirements

ITEM	PART NO	QTY	U/M	DESCRIPTION
1	19-04-0283	2	EA	Tie base- Adhesive mount
2	19-11-259	2	EA	Tyrap-13.38" Long

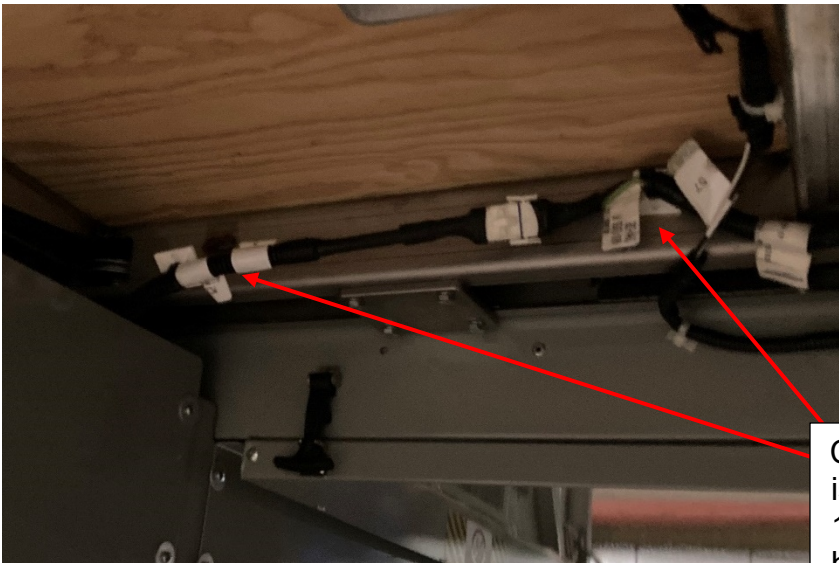
5.3.2 Re-installing adhesive tie bases

Cut the cable ties securing the 110V harness. Discard the tie base.



Cut and discard cable tie and tie base

Clean the frame with isopropyl alcohol and install new adhesive tie bases, MCI P/N: 19-04-0283 and secure the cable with cable ties, MCI P/N: 19-11-259



Clean the frame with isopropyl alcohol and secure 110V harness using tie bases, 19-04-0283, and cable ties, 19-11-259

6.0 Coach assembly

6.1 Installing acorn nut

Install acorn plastic nut, MCI P/N: 6486917, to the ground stud.



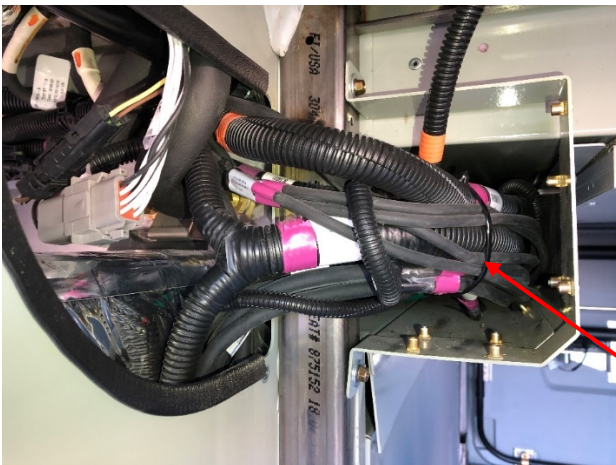
Install acorn nut, 6486917, to the ground stud



Acorn nut, 6486917

6.2 Securing cables above evaporator compartment

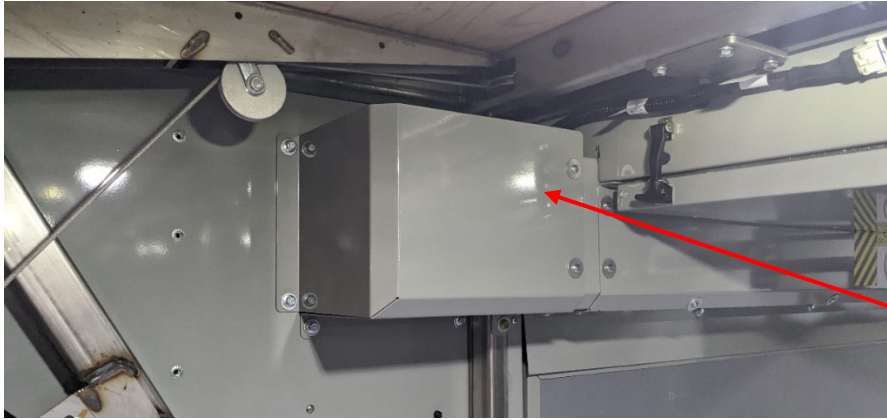
Secure the cables using cable ties, MCI P/N: 19-11-259, above evaporator compartment to move them away from rivnuts in harness cover panel.



Secure cables using cable ties, 19-11-259, and lift them from rivnuts

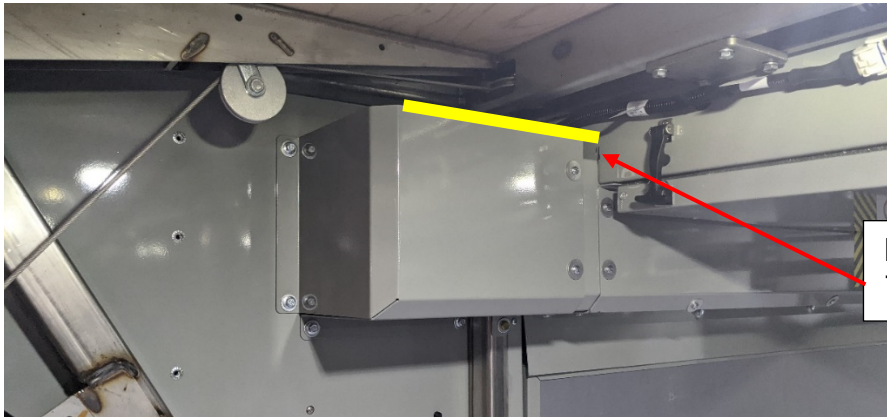
6.3 Installing trimlock

Re-install the battery compartment access panel using existing hardware.



Re-install the panel using existing hardware

Install trimlock, MCI P/N: 21-7201-8, to the access panel front edge as shown below.



Install trimlock, 21-7201-8



7.0 Field Change Program Conditions:

The parts required for this change will be supplied without charge.

A labor allowance of 15 minutes will be granted for the inspection.

A labor allowance of 15 minutes will be granted for the rework.

This labor allowance will be credited to your MCI Fleet Support Parts Account on receipt of the attached "MCI Field Change Program Verification Form" and a "Warranty Claim Form" as detailed in your Owner Warranty manual to MCI's Warranty department. A "MCI Field Change Program Verification Form" needs to be submitted for each VIN affected. Photocopy the attached "MCI Field Change Program Verification Form" as required for the number of affected coaches in your fleet.

Motor Coach apologizes for any inconvenience resulting from this campaign but urges you to implement this change as soon as possible.

Sincerely,

Motor Coach Industries



7.1 MCI FIELD CHANGE PROGRAM (FCP) VERIFICATION

CONTACT INFORMATION	
CUSTOMER NAME: _____ (PLEASE PRINT)	
FCP INFORMATION – ONE FORM PER UNIT	
FCP#: _____ Coach Model _____ Model Year _____	
COACH SERIAL #: (At least the last 5 digits)	DATE COMPLETED __ / __ / __
MILEAGE:	
IMPORTANT: TO RECEIVE CREDIT FOR ANY ALLOWABLE LABOR CHARGES, THIS VERIFICATION FORM MUST BE RETURNED TO MCI UPON COMPLETION OF THE FCP.	
SUBMITTED BY: (Please Print) _____ DATE __ / __ / __	
TITLE: (Please Print) _____	
SIGNATURE: _____	
COMMENTS: 	



FAX TO: 800-360-8886

Mail or fax the completed limited warranty claim form and verification form to MCI's warranty department, or photocopy and mail to:

MCI Fleet Support

Attn: Warranty Department

7001 Universal Coach Drive Louisville, KY 40258

Fax Number 1-800-360-8886

To receive credit for the hours used to complete this task. Contact the MCI Fleet Support Technical Center at 1-800-241-2947 for any further information.