

SERVICE ALERT BULLETIN

Alert Subject: D35 Axles with Idler Hubs

Component: Idler Hub

Initiated/created by: Approved per 2-10-21 email-Rob Gelven

Date: 9-Feb-2021

Problem Description:

PJ Trailers with idler axles may potentially have hubs missing inner bearing. The suspect axles are labeled with Dexter Axle Serial Numbers: 622463901 & 622463906 attached to the axle tube.

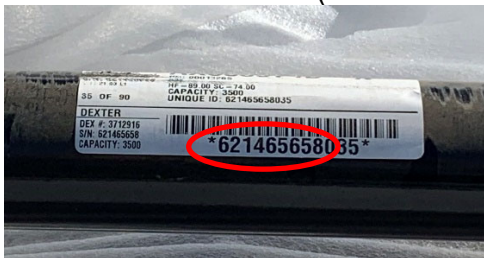
PJ Trailer Models Potential Impacted:
C4, C5, U6, U8, UC & UL

Idler Hub:



Containment:

- 1) For specific trailers shown on the list attached, identify the axle serial number by looking at the label attached to the axle (see below defined by first 9 digits):



- 2) If the axle serial number matches the suspect lots (622463901 or 622463906), then evaluate the axle to confirm the presence of the inner bearing by one (1) of the methods below.
- 3) Wheel-end evaluation:
 - a. Axle with idler hub (no wheel attached): grasp the outer diameter of the idler hub and attempt to move the hub inboard and/or outboard parallel to the axle beam. Movement greater than 1/8" should be considered an inner bearing 'non-conforming' hub assembly. There will be a noticeable 'wobble' of the hub on the spindle,
 - b. Axle with wheel attached: While the trailer is sitting on the ground, grasp the top of the tire and attempt to move the entire wheel-end inboard and/or outboard. Excessive movement of the wheel-end and/or audible metal-to-metal noise will indicate a potential inner bearing 'non-conforming' hub assembly. If the evaluation is inconclusive, remove the wheel from the hub and follow step a).
- 4) All units that are confirmed with a hub missing the inner bearing should have the axle assembly replaced. Contact recall@pjtrailer.com to initiate axle replacement. Provide axle serial number affected and associate trailer VIN number.