



SOP03349

TRUMA WATER HEATER PROPANE FITTING TO 1/2" SUPPLY LINE REPLACEMENT U24CB/FX, W24FTB (side entry)

Department: 32 Warranty/Service

People Required: 1

Time to Complete: 0.4hrs

Date Created: 10-30-20

Date Revised:

Created by Initial: GK

Rev #:

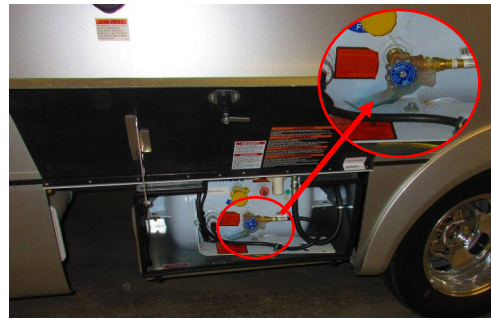
Verified: CF

The following are instructions for a LP service trained technician for the installation and testing of the Truma propane supply fitting replacement to comply with Transport Canada recall number 2020-518 and the US National Highway Transportation Safety Association (NHTSA) product safety recall, Campaign Number 20V-669. The new fitting will provide an appropriate propane connection to the flared fitting prior to the Truma.



Turn off the Propane for the coach at the Solenoid (if equipped), or at the manual tank valve.

1



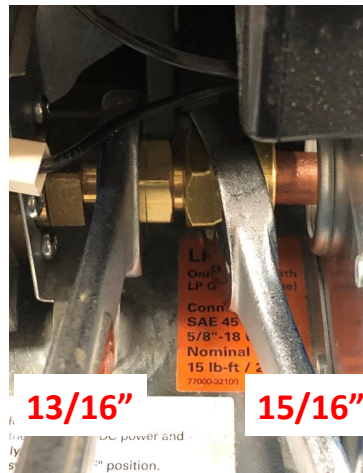
Ignite the stove top and allow it to self extinguish to burn off existing propane in the lines.

2



PIPE CONECTOR Open the Truma Water Heater door to access the Water heater 1/2" Female flare x 3/8" MPT connector to be replaced with a 3/8" Female flare x 1/2" Male flare coupling.

3



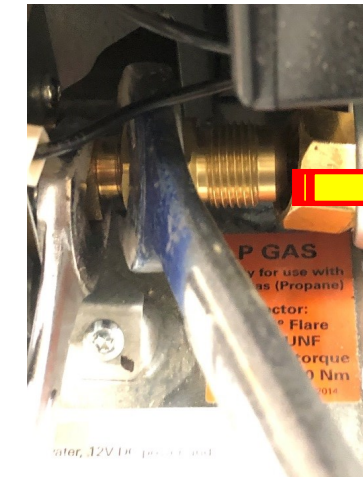
Remove 1/2" pipe from connector with 13/16" wrench on fitting and 15/16" wrench on nut.

4



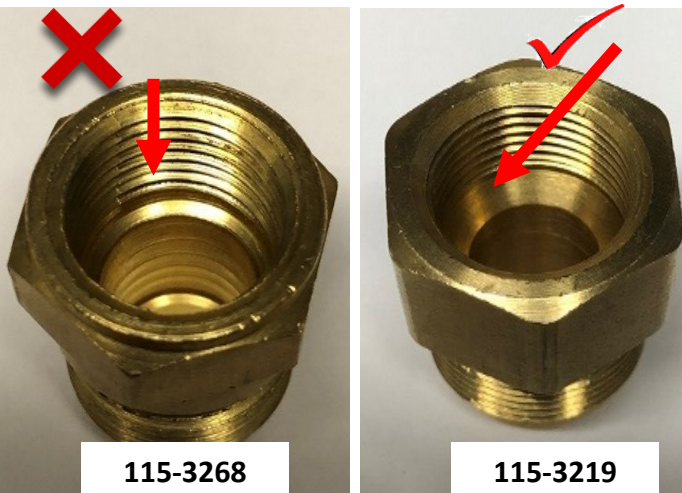
Remove the connector by holding the fitting at water heater with a 11/16" wrench and a 13/16" wrench on the coupling.

5



Push the pipe and nut to the right. Make sure there is ample propane line to push and the line does not kink. Check inside coach lines as well.

6



Replace pipe connection (115-3268) with Female flare x male flare connector (115-3219).

7

Reverse steps 3 to 5 to reinstall pipe and fitting to water heater.

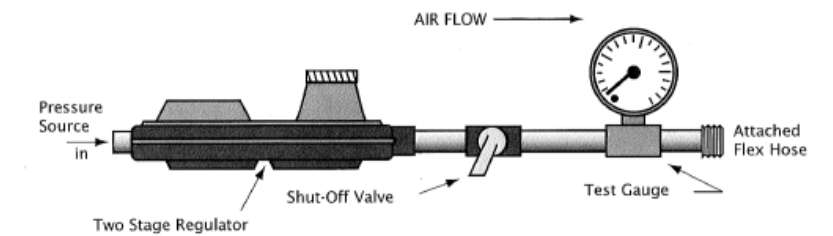
When reconnecting the propane line ensure the pipe does not get kinked and is properly routed.

Verify that the rubber grommet where the pipe enters the side of the water heater stayed in place.

Replace zip tie and ensure rubber grommet is tightly sealing the copper line.

Turn the Battery disconnect ON and open the Propane Supply/ Solenoid so that propane is in the system.

8



Bubble Solution Test

Attach an approved test apparatus to BBQ coupler, Open the valve on the BBQ connector. Open the valve on the propane Cylinder (and electrical solenoid

9



SOP03349

TRUMA WATER HEATER PROPANE FITTING TO 1/2" SUPPLY LINE REPLACEMENT U24CB/FX, W24FTB (side entry)

Department: 32 Warranty/Service

People Required: 1

Time to Complete: 0.4hrs

Date Created: 10-30-20

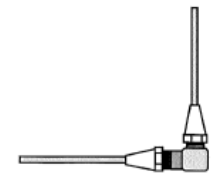
Date Revised:

Created by Initial: GK

Rev #:

Verified: CF

The following are instructions for a LP service trained technician for the installation and testing of the Truma propane supply fitting replacement to comply with Transport Canada recall number 2020-518 and the US National Highway Transportation Safety Association (NHTSA) product safety recall, Campaign Number 20V-669. The new fitting will provide an appropriate propane connection to the flared fitting prior to the Truma.



Make sure you maintain the pressure between 10 to 14 in. water column.



Use an approved bubble solution (E.g. Cal-Blue) and spray all three copper fittings in the Truma Water heater.

10



Monitor the sprayed connections for 1 minute and check for any bubbles.

If bubbles are detected tighten that fitting and monitor for a further 1 min.

11

If no bubbles are detected close off BBQ valve and remove test apparatus

12

If leak persists, close propane supply, burn off residual propane and inspect for further defects.
Contact Triple E Warranty/Service for further instructions.

13

This concludes the Truma propane fitting compliance replacement.
Service Centers, please submit service order or invoice for payment online at: Recalls@Tripleerv.com
Note that Recall Verification must be completed.
The service center labor reimbursement by VIN will automatically complete this process.
For any other questions or technical assistance, please call 1-877-992-9906

14

15

16

17

18