



Service Bulletin

Siteworks Systems

SWS #130

November 16, 2020

Tow Pole Rework

Log Splitter

Mandatory Rework

Bulletin Type Product Issue

Status Final Release

Affected Units

Model Number(s)	Serial Number(s)
22618HD	400755287 through 406816056

Exempt Units

Model Number(s)	Serial Number(s)
22618HD	405276433, 405448193, 405448198, 405448250, 405448256 through 405448257

Distribution For Dealer: Do not duplicate or distribute.

Situation Immediate Attention Necessary

Some units have tow tube mounting bolts experiencing fractures due to impact or rough road conditions.

We are adding reinforcement brackets to reduce the strain on the mounting bolts.

It is a violation of Federal law to lease any of the Log Splitters covered by this notice until the vehicle is repaired in accordance with the instructions in the Service Bulletin.

Corrective Action Rework

Tow Pole Reinforcement Kits will be sent to Home Depot stores with Log Splitters. Install the kit.

Safety Awareness Follow reasonable and customary safety precautions.

- Disconnect the spark plug wire before repairing the machine.
- Wear protective clothing and use insulated tools.

Parts

Currently available

Part Number	Part Description	Quantity Per Machine
144-2044	Tow Pole Reinforcement Kit	1

Parts Retention

Retain bulletin warranty parts for 90 days.

Returned Goods Authorization (RGA)

Standard

Special Tools Required

1/2 drill and 1/2 inch drill bit

Warranty

Mandatory Rework

Rework all units in the listed model and serial number ranges, using these instructions, regardless of purchase date.

After completing the rework, email CUETech@toro.com with the model and serial number of reworked units to receive credit for the labor.

Transportation

Not included.

References

Find the latest service manuals, diagnostic manuals, schematics, service bulletins and service alerts at [Gateway](#).

Resource	Search Term
<i>Operator's Manual</i>	Model and serial number for the machine.
Tow Pole Reinforcement Kit <i>Installation Instructions</i>	3442-534

Service Instructions

- Preparing the Machine**
1. Park the machine on a level surface and shut off the engine. Allow the engine to cool. Chock or block the wheels.
 2. Disconnect the spark plug wire.
 3. Raise the rail to the vertical position as follows.
 - A. Remove the lock pin.
 - B. Rotate the rail so that it is vertical, against the base of the machine.
 - C. Rotate the vertical lock lever to the closed position to secure the lower rail in place.

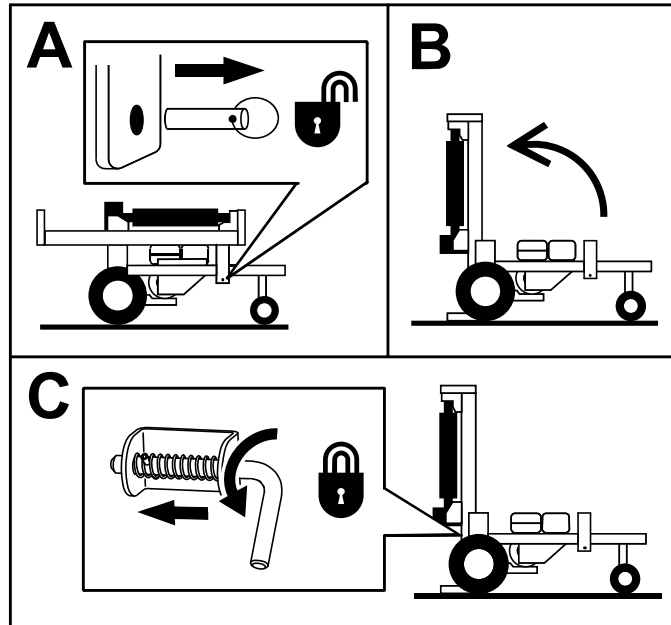


Figure 1

-
4. Use a car jack under the engine-mounting plate and raise the machine until the front swivel wheels are off the ground. Support the machine using jack stands.

Installing the Kit

1. Place the support bracket on the tow pole so that it is resting against the pivot plate.
2. Mark the holes on both sides of the tow pole and remove the support bracket.

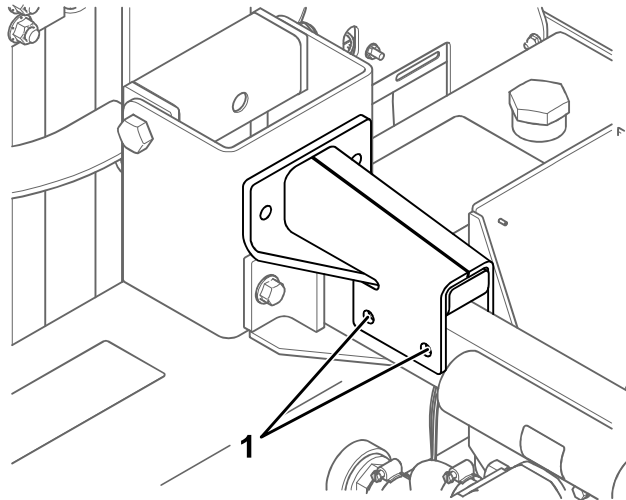


Figure 2

1. Mark and drill these holes (4)

-
3. Remove the tow pole from the pivot bracket. Discard the fasteners.

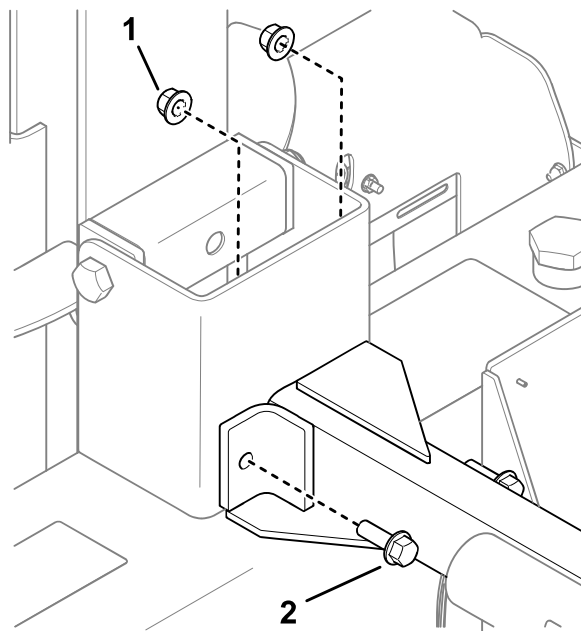


Figure 3

1. Nut (2)

2. Bolt (2)

4. Raise the tow pole and drill holes (17/32 inch diameter) at the locations marked in step 2.

WARNING

Using a drill without proper eye protection may allow debris to enter the eye, causing injury.

When drilling or carrying out other operation, always wear eye protection.

5. Secure the tow pole and a plate to the pivot bracket.

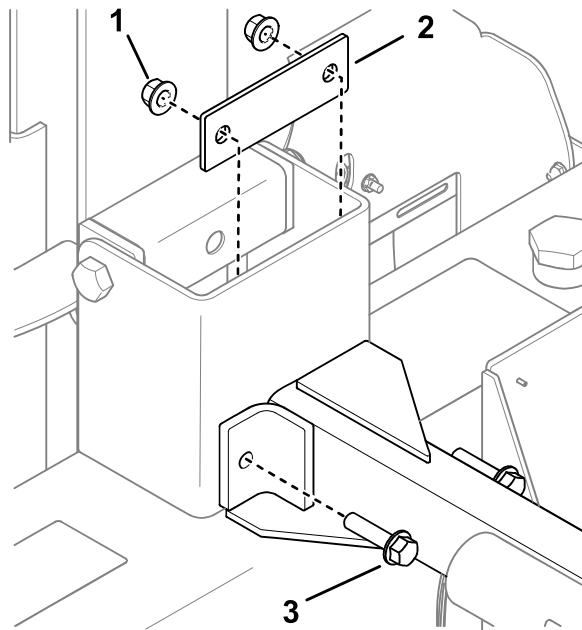


Figure 4

1. Nut—1/2 inch (2)
2. Plate
3. Bolt—1/2 x 2 inches (2)

6. Place the support bracket on the tow pole and secure it at the bottom holes.

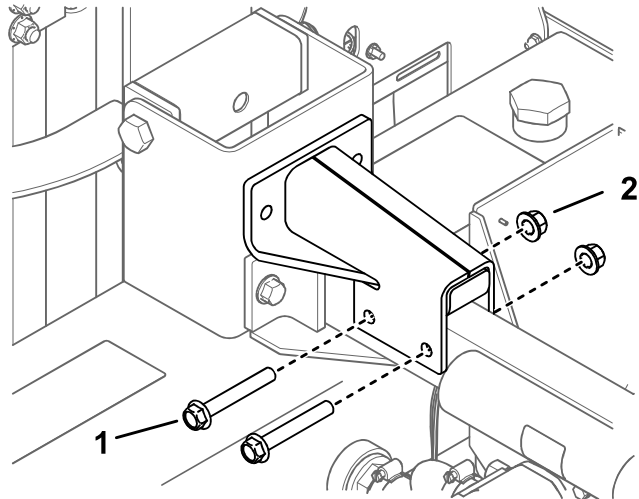


Figure 5

1. Bolt—1/2 x 3-1/2 inches (2)
2. Nut—1/2 inch (2)

7. Using the support bracket as a guide, drill 2 holes (17/32 inch diameter) into the pivot plate.

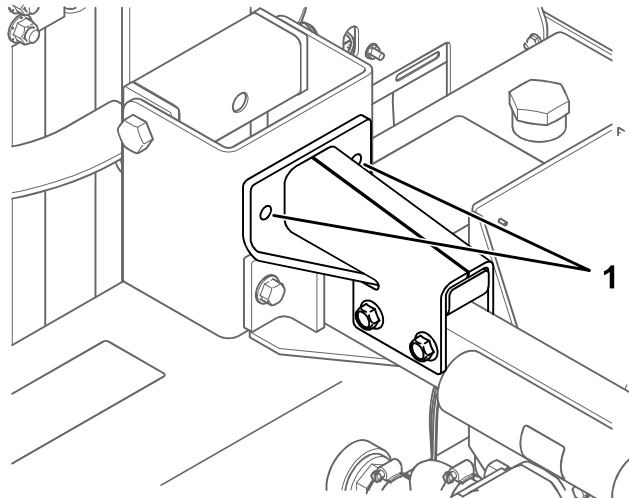


Figure 6

1. Drill here.

8. Secure the support bracket to the pivot plate.

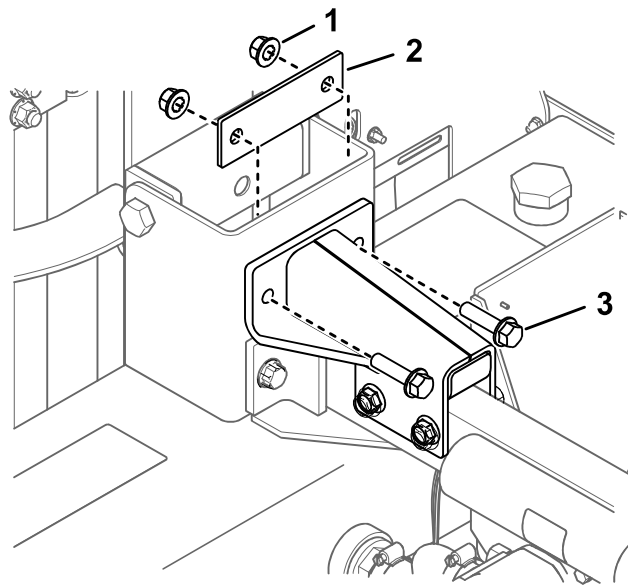


Figure 7

1. Nut—1/2 inch (2)

2. Plate

3. Bolt—1/2 x 2 inches (2)

9. Torque all 6 bolts to 142 N·m (105 ft-lb).

10. Lower the machine so that the tow pole rests on the front wheels.

11. Lower the rail to the horizontal position and secure it with the lock pin.

12. Connect the spark plug wire.