



Driver and Passenger 6way Power seats –wire routing and circuit protection

Bulletin Type:	Safety Recall
Bulletin #s:	20V-600 US Units 2020-476 CN Units
Job Code:	9903521
Flat Rate(s):	RC024 1.5 Hrs. Inspect, add loom, add 2 Breakers RC025 1 Hr. Inspect and Add 2 Beakers

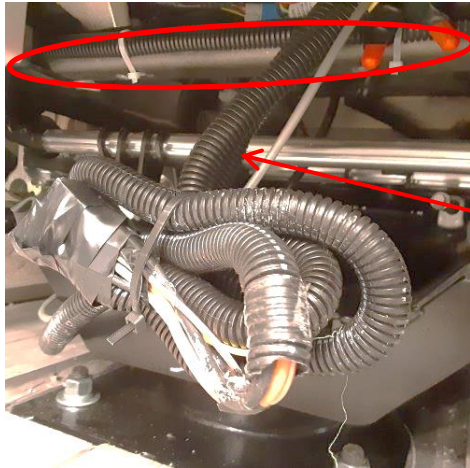
Publication Date:	December 04, 2020
Make:	Entegra
Models:	Aspire Anthem Cornerstone Reatta XL
Model Years:	2021

Incident:	Incorrect circuit protection and wire routing/protection may lead to damage, a short circuit or overheated wiring, which could create the risk of a fire.
Affected Units:	<p>2021 Aspire M13B8051-8060 3F8051-8071 3M8051-8052 3P8051-8066 3R8051-8088 3W8051-8074 3Z8051-8057</p> <p>2021 Anthem M14B8051-8073 4F8051-8086 4H8051 4R8051-8060 4W8051-8079 4Z8051-8064</p> <p>2021 Cornerstone M16B8051-8071 6F8051-8086 6R8051-8056 6W8051-8076 6X8051-8052 6Y8052-8053 6Z8051-8061</p> <p>2021 Reatta XL M1MC8051-8074 MG8051-8064 MJ8051-8055 MK8051-8065</p>
Parts Kit:	<p>Parts Kit #:20V-600</p> <p>Parts Kit Contents: 2 - 15A manual reset circuit breaker</p>
Misc. Tools & Supplies:	Screw gun w/square bit 3/8" nut driver 5/16" socket 5ft 3/4" Black split Polyethylene Wire Loom

INSPECTION

Inspect under the **driver and passenger** seats to make sure:

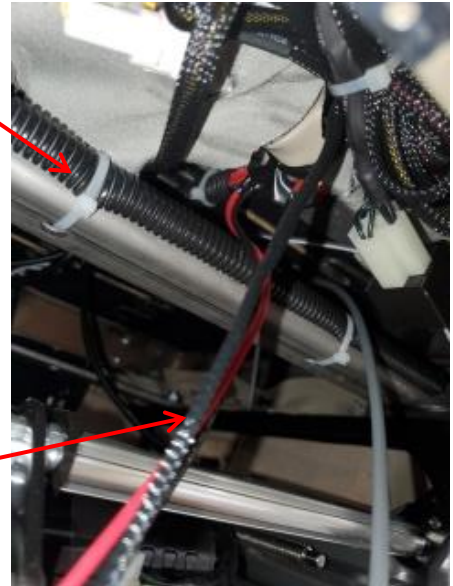
- The wire outside of the (wire) cluster is covered with wire loom (Picture shows the wire with loom).
- If the wire is not covered with loom, install the wire loom on both seat wires.
- The frame rail is covered with wire loom. If there is no loom on the frame piece, install the loom.



Chair Frame requires loom as shown

Wire requiring loom Shown in place

Wires require loom Shown not in place

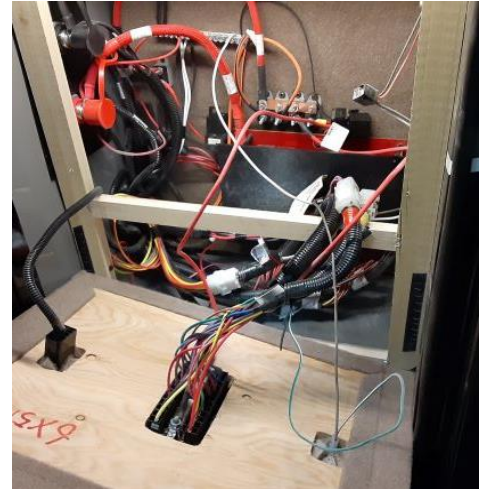
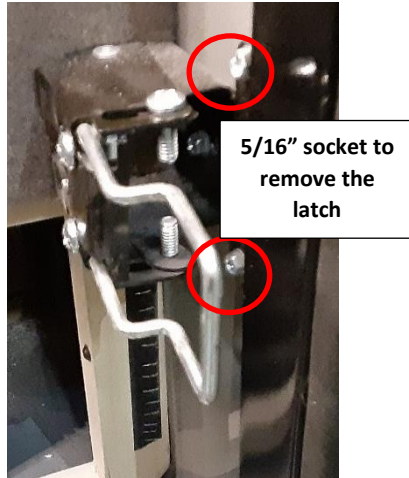
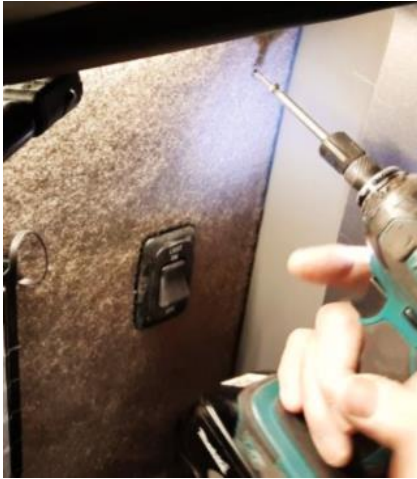


INSTRUCTIONS

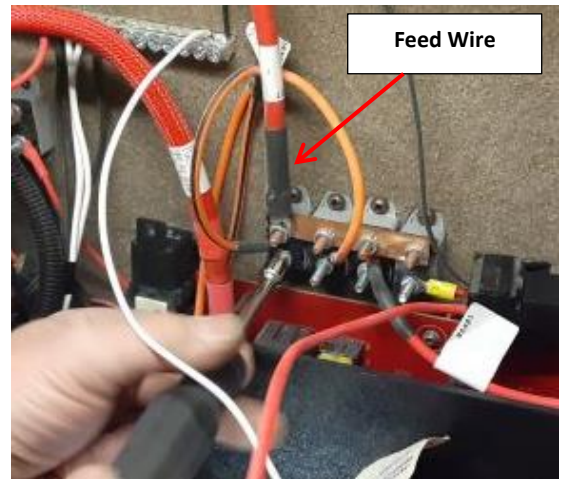
1. **Disconnect all power connections to the unit. The load center generator/fender compartment breaker must be turned off prior to starting the repair.**
2. Locate the breakers (for replacement) in the exterior fender compartment. Remove the lower panel by grasping the sides and pulling it towards you. There is no fastener removal required.
3. Use a screw gun with a square bit, to remove the (4) screws from the upper panel corners. Carefully remove the panel by pulling towards you as there are wires attached to the back of the panel.



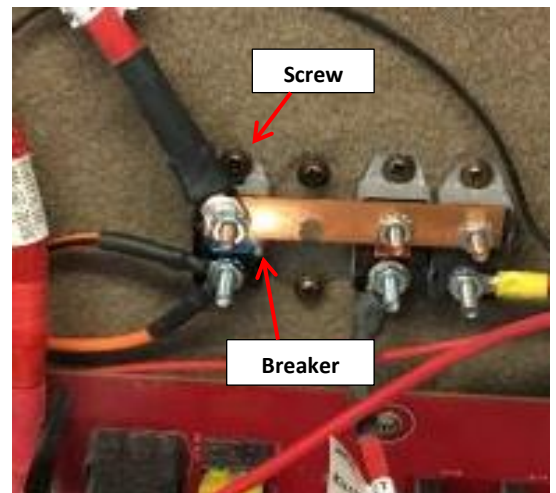
NOTE: Some models may require removing the latch so the lower panel can be easily removed. Use a 5/16" socket to remove the bracket. Set all aside for reuse.



4. Locate the bus bar in the center of the compartment. Locate the (2) orange wires on the left side of the bus bar (towards the front of the unit). Using a 3/8" nut driver, remove the nut on the left wire. Remove the nut on the "feed" wire so you can access the breaker screw. Set aside both nuts for reuse.



5. Use the screw gun with the square bit, to remove the screw on the breaker (for the wire you just removed). Set aside for reuse.
6. Remove the breaker from behind the bus bar.



7. Install the new breaker where the original one was removed. The manual switch should be installed at the top.

NOTE: Caution should be taken when installing the new breaker as to not damage or break the manual switch feature.

8. Reinstall the feed wire and the orange wire.



9. Repeat the process on the next breaker (next to the one just replaced).

10. Replace (both) cover panels and the latch if it was removed.



Jayco's sole obligation under our limited warranty is to repair or replace defective materials and/or workmanship deemed our responsibility as determined by Jayco in our sole discretion. Jayco reserves the right to use new and/or remanufactured parts or materials of similar quality to complete any work, and to make parts and/or design changes as appropriate without notice to anyone. Jayco designs and/or materials changes are done without obligation to incorporate such changes in previously manufactured product. Jayco makes every reasonable effort to ensure field remedies will not adversely affect performance and/or safety of the unit. This field remedy is not intended to extend to future performance of this RV, or any of its materials, components or parts beyond the standard warranty period. The RV owner's obligation to notify Jayco, or one of its independent, authorized dealers, of a claimed defect does not modify any obligation placed on the RV owner to contact Jayco directly when attempting to pursue remedies under state or federal law. Jan. 2019.

903 South Main Street • P.O. Box 460 • Middlebury, IN 46540