

## LP Hose/Connector Re-Location

### Description

It has been decided that certain 2021 Mallard M26 and 2021 Mallard M33 in this recall population may have been manufactured with the LP hose/connector over the shackle. The Shackle could come in contact with the LP hose/connector damaging them producing an LP leak.

### Inspection & Repair

Identify the location of the manifold as it relates to center Shackle.

1. Shackle location in proximity to LP hose/connector. – No repair required if the shackle or shackle bolt will not impact the hose or connector. File claim for inspection only.

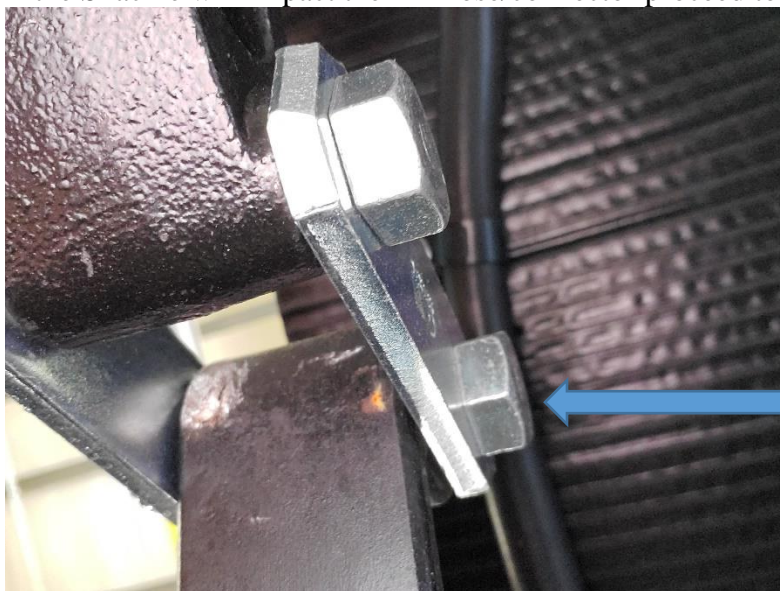
File Recall Inspection warranty claim using warranty code (99.01.52 L) for 0.10 hours.

Note: No warranty will be paid if the VIN is not part of the affected list.



Notice position of shackle to the LP Hose/Connections. LP components are set back on I-beam out of shackle travel area.

2. If the Shackle will impact the LP Hose/connector proceed to Re-location.



Shackle will  
hit the LP  
connection

3. This will require the relocation of the LP Manifold/ Hoses, Follow the instruction below.
  - 1) Turn off LP tanks and disconnect.
  - 2) Remove LP regulator from stand.
  - 3) Remove all hose clamps holding LP line prior to manifold, and post manifold.
  - 4) Remove the three self-tapping screws from LP manifold.
  - 5) It may be necessary to pull additional LP hose from lines that enter unit through flooring to accommodate the relocate.
  - 6) Move manifold back approximately to the center of spring where U-bolt mounting plate is located, and most inward side of the I-beam.
  - 7) Be sure that LP hoses coming off the side of the LP manifold face inward. If the hoses face outward toward the Tire be sure to secure hoses to I-beam so as not to contact tires.
  - 8) Remount the LP manifold.
  - 9) Seal LP hoses entering unit from underside.
  - 10) Remount LP hose for exterior LP quick connect entering rear of manifold (approximately three hose clamps).
  - 11) Start at LP manifold Remount hose clamps holding main line going towards the front of the RV. Hose clamps on each side of spring shackle should be mounted at an angle so that you achieve a loop in LP line around shackle to avoid contact or getting pinched.
  - 12) Reinstall all hose clamps holding LP line prior and post of manifold (approximately 12).

- 13) Reinstall LP regulator to stand.
- 14) Reconnect LP tanks.
- 15) Perform Lock out test, and Drop test to insure safety.

**Parts**

No parts required to re-locate, if any parts (LP hose/connector/manifold) are damaged contact Customer service to order replacement.

**Warranty**

File Recall Repair warranty claim using warranty code (99.01.52 A), for .75 hours.

**\*\*\*Pictures required\*\*\***

**Please refer all questions and authorization requests to Heartland Dealer Services  
Department 877-262-8032**