



GROUP  
**Safety Recall  
Campaign**

MODEL  
**2019MY  
Forte (BDm)**

NUMBER  
**SC195**

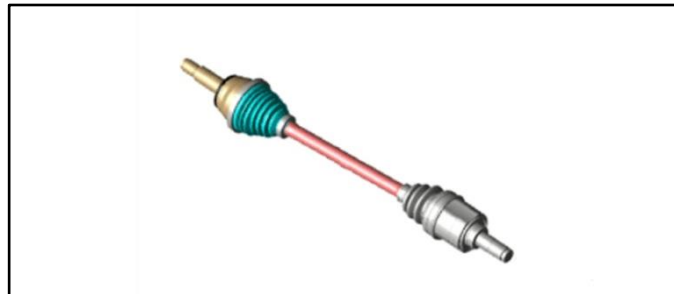
DATE  
**August 2020**

## SAFETY RECALL CAMPAIGN

SUBJECT:

### LEFT FRONT AXLE DRIVESHAFT INSPECTION AND/OR REPLACEMENT (SC195)

This bulletin provides information to inspect and, if necessary, replace the left front axle driveshaft assembly on some 2019MY Forte (BDm) vehicles produced from April 26, 2019 through May 22, 2019. The left front axle driveshaft may not have been heat-treated. A driveshaft that has not been heat-treated is more susceptible to breaking. A broken driveshaft can result in a sudden loss of motive power, thus increasing the risk of a crash. Before conducting the procedure, verify that the vehicle is included in the list of affected VINs.



Left Front Axle Driveshaft (BDm)

#### \* NOTICE

There is no charge to the vehicle owner for this repair. Under applicable law, you may not sell or otherwise deliver any affected vehicle until it has been repaired pursuant to the procedures set forth in this bulletin.

#### \* NOTICE

To assure complete customer satisfaction, always remember to refer to WebDCS Warranty Coverage (validation) Inquiry Screen (Service → Warranty Coverage → Warranty Coverage Inquiry) for a list of any additional campaigns that may need to be performed on the vehicle before returning it to the customer.

Printed TSB copy is for reference only; information may be updated at any time.  
Always refer to KGIS for the latest information.

Circulate To:  General Manager  Service Manager  Parts Manager  
 Service Advisors  Technicians  Body Shop Manager  Fleet Repair

## LEFT FRONT AXLE DRIVESHAFT INSPECTION AND/OR REPLACEMENT (SC195)

### Inspection Procedure:

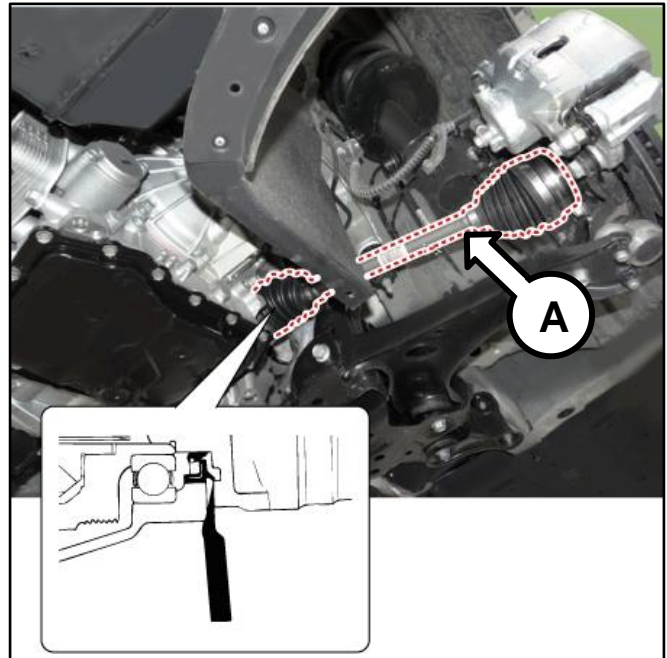
1. Remove the left front driveshaft assembly (A) by referring to the “Driveshaft and axle → Drive Shaft Assembly → Front Driveshaft → Repair procedures” chapter in the applicable Shop Manual on KGIS.

#### \* NOTICE

Universal Axle Puller tool is required to push axle tip out of wheel hub bearing.

#### ❗ IMPORTANT

Ball Joint Puller SST 09568 1S100 is **NOT** available as an essential **Kia tool**. **INSTEAD**, remove the pinch bolt and pry down the lower control arm, after stabilizer link has been removed.



2. Remove the TJ housing (B) by referring to the “Driveshaft and axle → Drive Shaft Assembly → TJ Joint → Repair procedures” chapter in the applicable Shop Manual on KGIS.

#### \* NOTICE

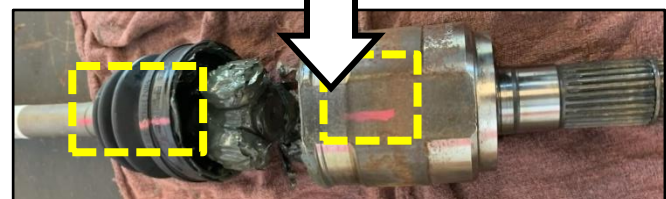
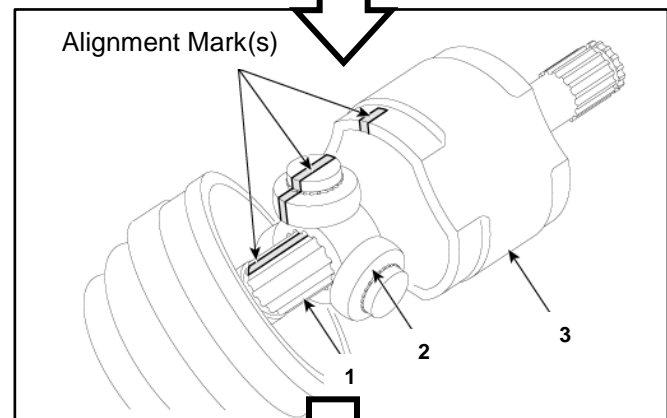
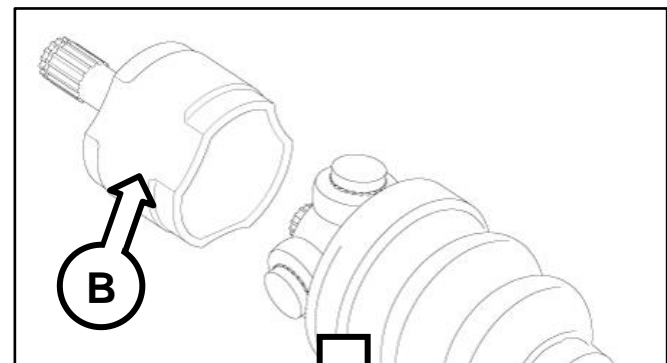
Band Clamp Pliers SST 09495 39100 is required.

#### ❗ IMPORTANT

Be sure to make alignment mark(s) on the following parts:

1. Shaft Splined shaft
2. Spider Assembly boot
3. TJ Housing

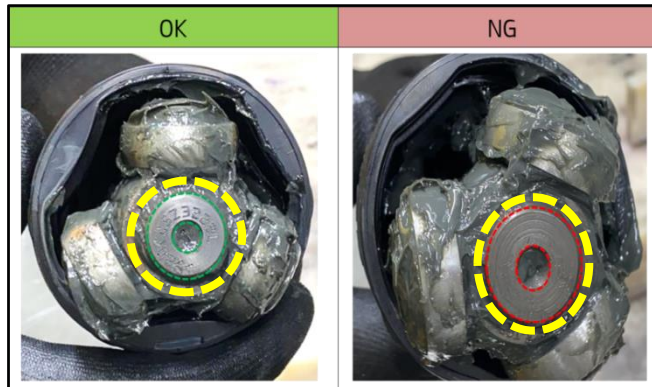
Be sure to save grease, do **NOT** clean or discard from the TJ Housing, the TJ boot will be reused with a new band clamp. Take care not to damage the boot.



SUBJECT:

## LEFT FRONT AXLE DRIVESHAFT INSPECTION AND/OR REPLACEMENT (SC195)

- 3a. Inspect the end of the shaft spline and confirm if the heat treatment stamping is present.
- 3b. If the stamping is present (OK), **take photo**, no further action is required. Proceed to step 4.
- 3c. If the stamping is not present (NG), **take photo**, proceed to the 'Repair Procedure' at the bottom of this page.



### ❗ IMPORTANT

**KVID photo is required for Step 3b and 3c and must be supplied with submission of the Warranty claim.**

4. Follow the reassembly instruction for the TJ housing outlined on KGIS. Be sure to properly re-align the TJ housing to the marking on the boot.
5. Reinstall all removed parts in the reverse order of removal.

### ★ NOTICE

**Install a new TJ boot band using the Band Installer SST 09495 39100. Reuse grease and install a new driveshaft lock hub nut and torque to specifications, then chalk and lock in place.**



**Note: Wheel Alignment check is not necessary.**

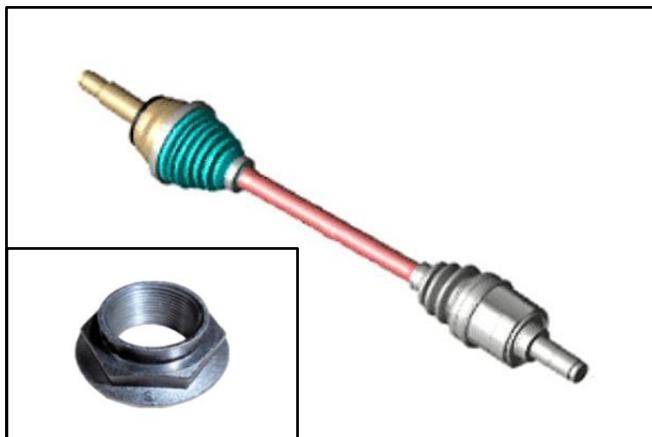
### Repair Procedure:

1. Replace the left front driveshaft assembly (A) by referring to the "Driveshaft and axle → Drive Shaft Assembly → Front Driveshaft → Repair procedures" chapter in the applicable Shop Manual on KGIS.

### ★ NOTICE

**Install a new driveshaft lock hub nut and torque to specifications, then chalk and lock in place.**

**Torque specifications for nut:  
202.5 – 217.0 lb. ft (274.6 – 294.2 N.m.,  
28.0 - 30.0 kgf.m)**



**Note: Wheel Alignment check is not necessary.**



SUBJECT:

## LEFT FRONT AXLE DRIVESHAFT INSPECTION AND/OR REPLACEMENT (SC195)




AFFECTED VEHICLE RANGE:

Model	Production Date Range
Forte (BDM)	April 26, 2019 to May 22, 2019

REQUIRED TOOLS:

Tool Name	SST P/N	Figure	Comments
Axle Puller	N/A		Refer to Snap On Tools or equivalent tool
Band Clamp Pliers	09495 39100		Drawer #5

REQUIRED PART:

Part Name	Part Number	Figure	Qty.
Left Front Driveshaft Assembly	49500 M7200QQK		1
Castle Nut	49551 3X000QQK		1
TJ Boot Band	81622 ST102QQK		1

WARRANTY INFORMATION:

**N Code: N99 C Code: C99**

Claim Type	Causal P/N	Qty.	Repair Description	Labor Op Code	Op Time	Replacement P/N	Qty.
R	49500 M7200	0	(SC195) Left Front Driveshaft Inspection	200M08R0	1.0 M/H	81622 ST102QQK	1
						49551 3X000QQK	
			(SC195) Left Front Driveshaft Inspection and Replacement	200M08R1	1.0 M/H	49500 M7200QQK	1
						49551 3X000QQK	

**Note:** Refer to Warranty Bulletin 2020-20 for claim submission procedures.**\* NOTICE**

VIN inquiry data for this repair is provided for tracking purposes only. Kia retailers should reference **SC195** when accessing the WebDCS system.