



# Thor Motor Coach Recall Repair Instructions

|                           |  |                    |                   |
|---------------------------|--|--------------------|-------------------|
| Recall #                  | <b>20V-419<br/>2020-332</b>  |                    |                   |
| Description/Title:        | <b>Battery Cable Routing</b>   |                    |                   |
| Affected Product Line(s): | Certain model year 2021 Daybreak, Four Winds, Quantum, Chateau, and Freedom Elite motorhomes built on the 2020 Ford E-Series chassis |                    |                   |
| Service Campaign # :      | <b>RC000197</b>  | Released Date:     | <b>09/04/2020</b> |
| Repair Code:              | <b>Inspect Only:<br/>TMCRC80492Y</b><br><b>Inspect with Repair:<br/>TMCRC80492V</b>  | Document Date:     | <b>09/04/2020</b> |
| Time Allowed:             | <b>Inspect Only:<br/>0.2</b><br><b>Inspect with Repair:<br/>0.4</b>  | Document Revision: | <b>A</b>          |

### Issue:

It has been discovered that on certain model year 2021 Daybreak, Four Winds, Quantum, Chateau, and Freedom Elite motorhomes built on the 2020 Ford E-Series chassis, the battery cable may not have been properly secured within the chassis rail. If the cable was not properly secured, it may come in contact with the heat shield and exhaust manifold, which could lead to a fire. This could result in property damage, personal injury, or death.

### Tools/Supplies Needed:

- 5/16" nut and socket (to remove reservoir)
- UV Rated Zip Ties (if unit is needing repair)

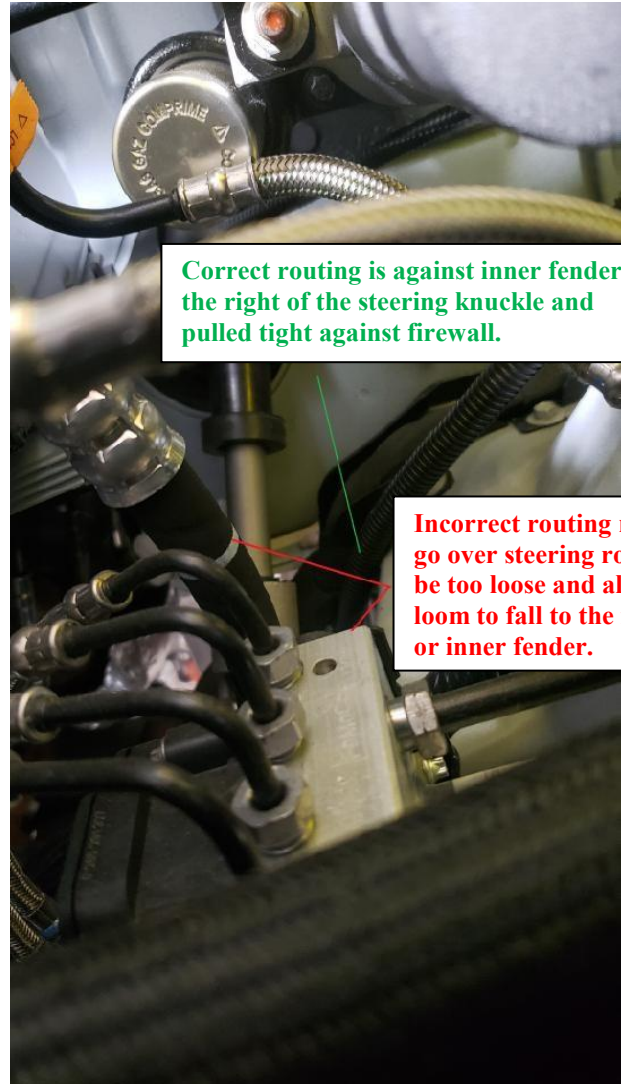


## Thor Motor Coach Recall Repair Instructions

### Instructions:

#### Inspection:

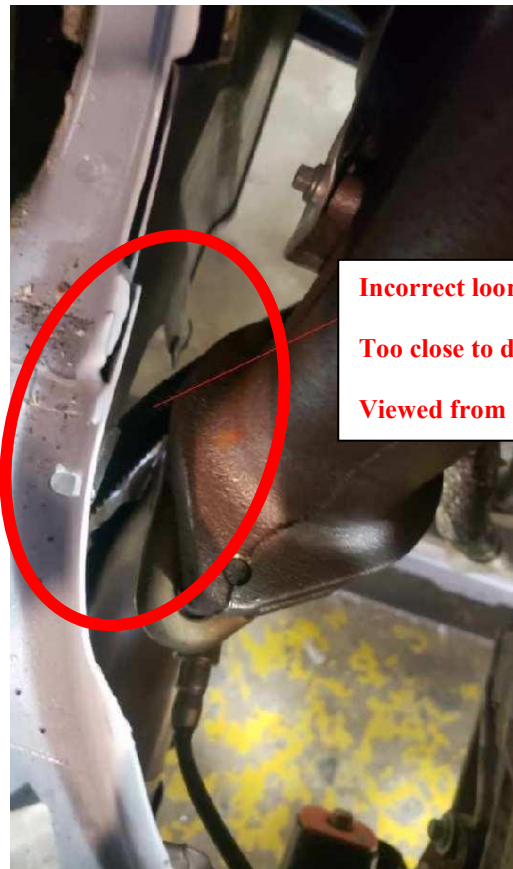
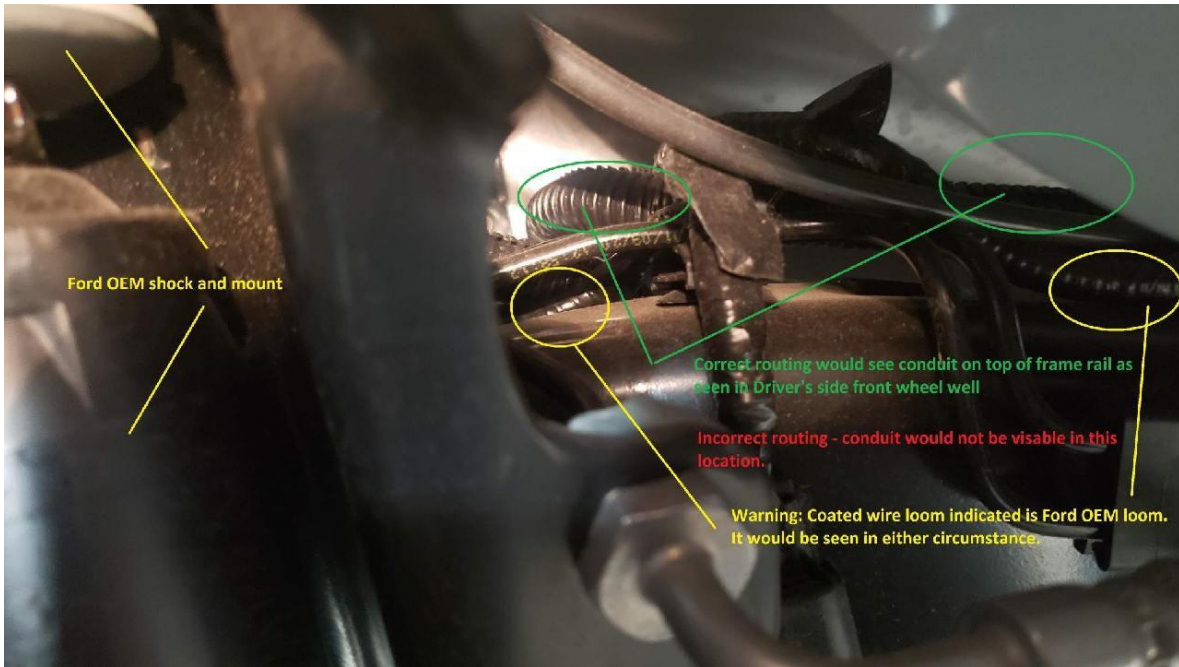
1. Open hood and remove windshield washer reservoir using the 5/16" nut and socket.
2. Locate battery cable and inspect routing and to determine if cable is tightly secured.





# Thor Motor Coach Recall Repair Instructions

(Additional examples of correct and incorrect routing)





## Thor Motor Coach Recall Repair Instructions

3. If battery cable is properly secured and in correct placement, no further steps are needed. (Be sure to reinstall windshield reservoir upon completion).

If battery cable is too loose or routed too close to manifold, continue to Step 4.

### **Repair:**

4. If needing to secure cable, use UV rated zip ties to properly secure cable to frame rail and away from manifold.
5. If cable will need to be re-routed:
  - a. Remove ½ in. nut off battery solenoid to remove cable.
  - b. Re-route as needed along frame rail to ensure cable is away from heat shield and conduit is visible on top of frame rail from driver's side front wheel well. Be sure to properly secure once re-routed.
  - c. Re-install cable to solenoid.

***In the event the battery cable is damaged enough to require replacement, please contact TMC directly at (877) 500-1020 for further instruction.***