

Safety and Emissions Recall 4520F: 2020 CX-30 AWD Fuel Leak from Rear of Vehicle

1. VEHICLE INSPECTION PROCEDURE

Verify that the vehicle is within the following ranges:

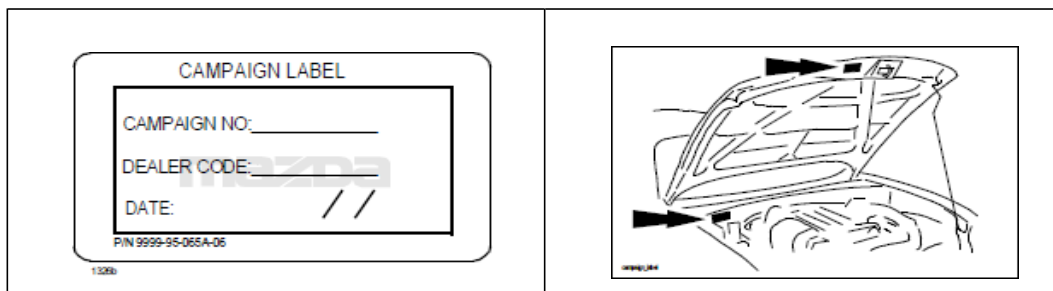
Model	Subject VIN range	Subject production date range
CX-30 AWD built at MMVO	3MV DM**** LM 104188 – 137005	November 13, 2019 through March 24, 2020

The asterisk symbol "*" can be any letter or number.

- If the vehicle is within the above ranges, proceed to **Inspection and Repair Procedure**
- If the vehicle is not within the above ranges, return vehicle to the customer or inventory.

Perform a Warranty Vehicle Inquiry using your eMDCS System and inspect vehicle for Campaign Label Recall 4520F attached to the vehicle's hood or bulkhead. Refer to eMDCS System - Warranty Vehicle Inquiry Results table below.

NOTE: Be sure to verify Recall number as the vehicle may have multiple Recall labels.



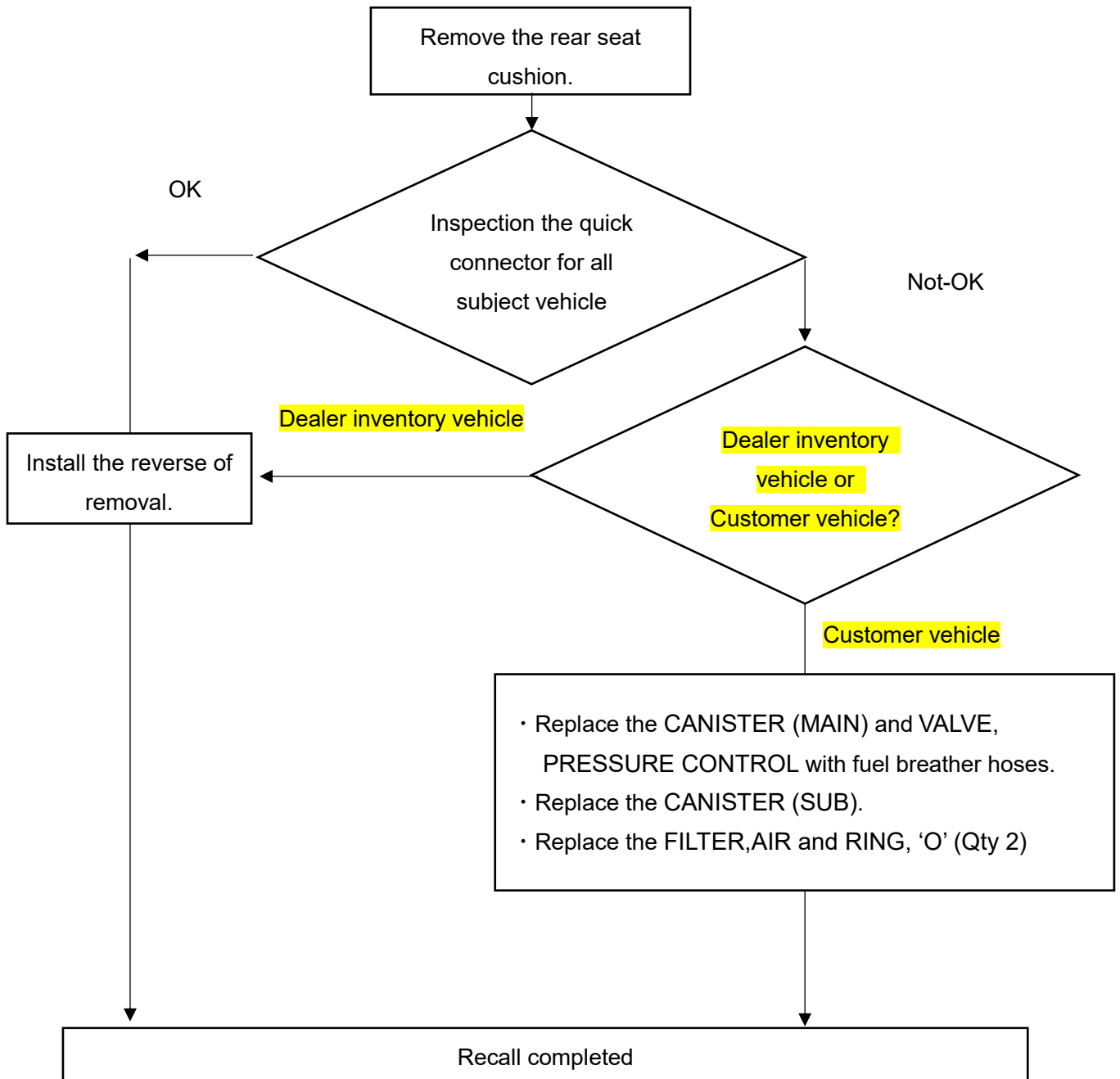
eMDCS System - Warranty Vehicle Inquiry Results:

If eMDCS displays:	Campaign Label is:	Action to perform:
RECALL 4520F OPEN	Present	Email Dealer Recall Help or Contact Warranty Hotline at (877) 727-6626 option 3 to update vehicle history.
	Not present	Proceed to "2. REPAIR PROCEDURE".
RECALL 4520F CLOSED	Present	Return vehicle to inventory or customer.
	Not present	Proceed to "3. CAMPAIGN LABEL INSTALLATION".
RECALL 4520F IS NOT PRESENT	Does not apply	Recall does not apply to this vehicle. Return vehicle to inventory or customer.

NOTE: Please check with your parts department on parts availability before performing this recall.

If a canister and supporting clips, retainers are needed for this recall they will need to be approved in advance by Dealer Recall Help. Please contact Dealer Recall Help if you find that a canister is needed to be replaced.

Flow chart

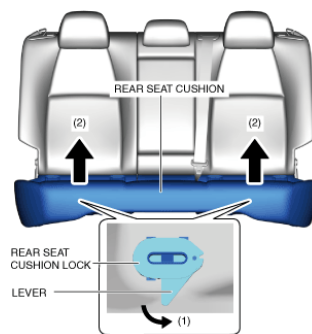


A. INSPECTION AND REPAIR PROCEDURE

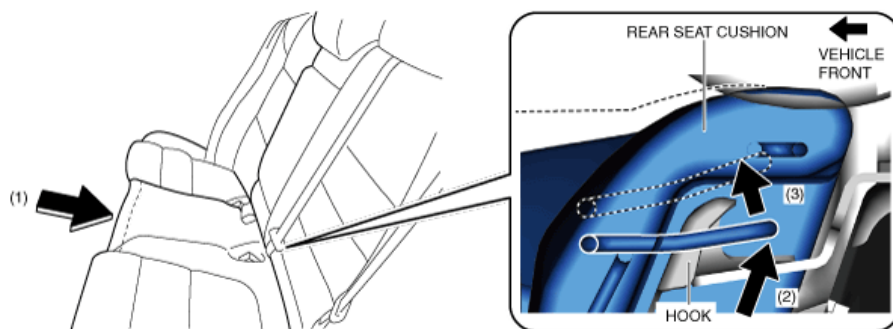
CAUTION

When performing the procedure with a rear seat cushion removed from the vehicle, perform the procedure on a clean cloth so as not to damage or dirty the seat.

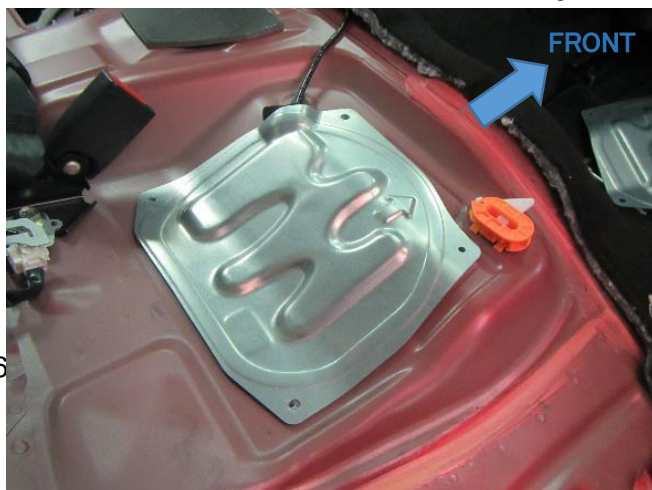
1. Disconnect the negative battery terminal.
2. If the fuel gauge level indicates 12/16 or more, refer to the [FUEL DRAINING PROCEDURE] and drain the fuel.
3. While moving the rear seat cushion lock levers in the direction of arrow (1) shown in the figure, lift up the rear seat cushion in the direction of arrows (2) and detach the rear seat cushion lock from the rear seat cushion.

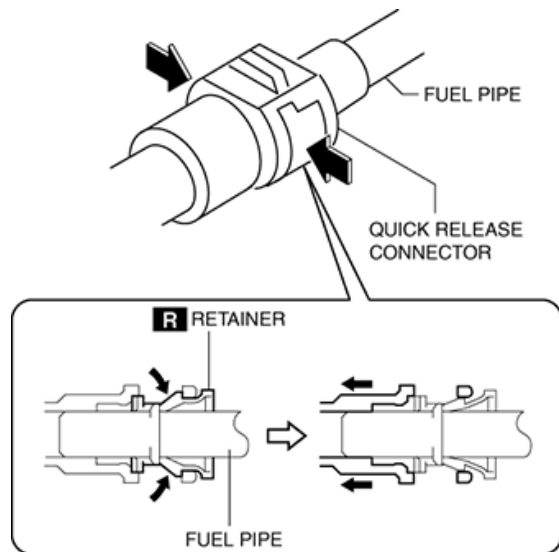
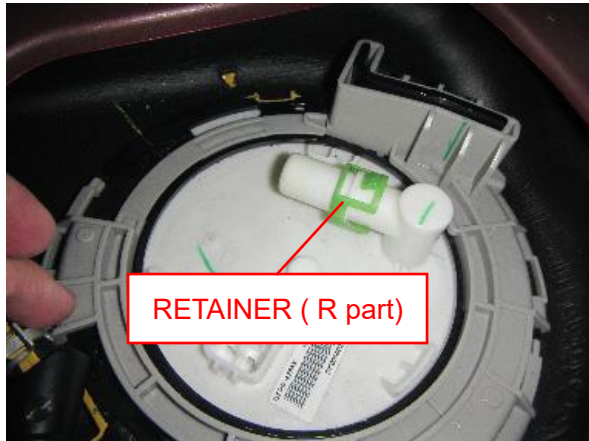


4. While pressing the rear seat cushion in the direction of arrow (1) shown in the figure, lift up the rear seat cushion in the direction of arrow (2), move it in the direction of arrow (3), and detach it from the hook.



5. Remove the service hole cover at rear right side.





WARNING

- Highly pressurized fuel may spray out if the fuel line is cut. Due to the following dangers occurring with a fuel spray, always complete the "Fuel Line Safety Procedure" to prevent the fuel from spraying.
- Fuel may cause irritation if it comes in contact with skin and eyes.
- If fuel ignites and causes a fire, it may lead to serious injury or death, and damage to property and facilities.
- A person charged with static electricity could cause a fire or explosion, resulting in death or serious injury. Before performing work on the fuel system, discharge static electricity by touching the vehicle body.

CAUTION

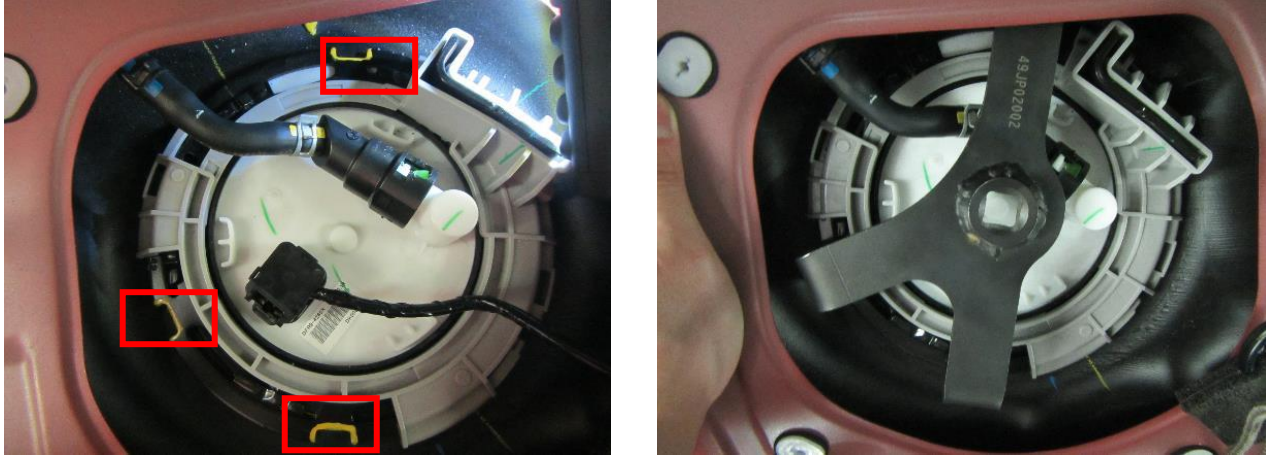
- Disconnecting/connecting the quick release connector without cleaning it may cause damage to the fuel pipe and quick release connector. Always clean the quick release connector joint area before disconnecting/connecting using a cloth or soft brush, and make sure that it is free of foreign material.

6. Draw the marking at fuel tank and set plate component.



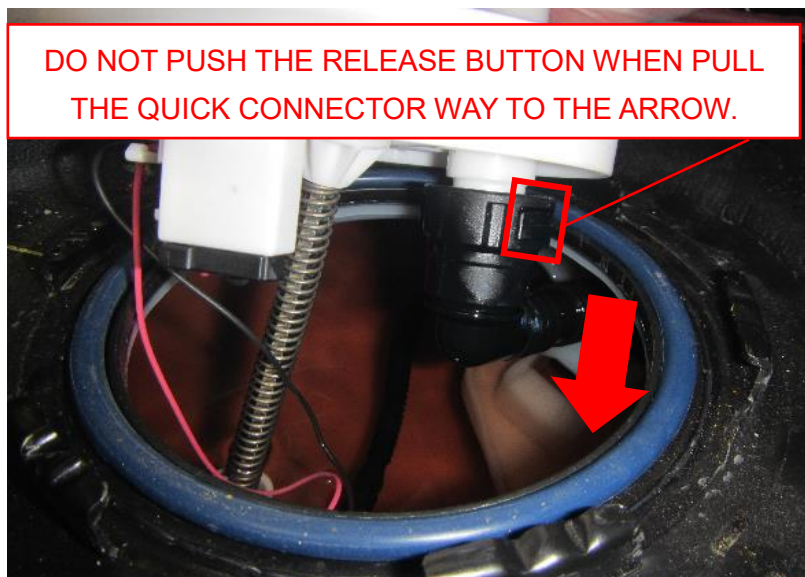
- Remove the fuel gauge at sub fuel tank using the Mazda required SST PN:49JP02002 attaching 3 claws at the set plate component shown in the picture below.

Note: The Mazda required SST PN:49JP02002 is not a Recall SST, it is a tool that is already required for all CX-30 repairs.

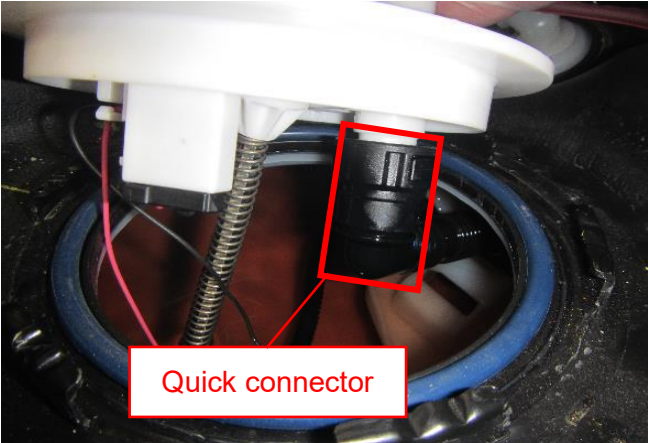


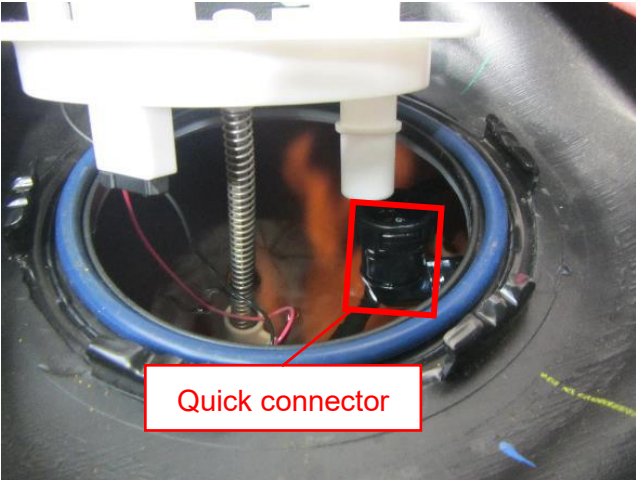
- Pull the quick connector way to the arrow by hand shown picture below.

Caution: Do not push the release button when the quick connector is pulled.



9. Use the following instructions to determine if the quick connector inspection result is OK or Not OK.

Status	Judgement
<p>The quick connector has mounted and fits correctly.</p> 	<p>OK</p>

Status	Judgement
<p>The quick connector is disconnected.</p> 	<p>Not-OK</p>

● Result is OK. (The quick connector is mounted and locked to the fitting) Perform the procedure 12,13,14,15 and 18 to 21 for reverse of order of removal and includes required replacement short parts (R part).

● Result Not OK. (The quick connector is disconnected.)

- Dealer inventory vehicle: Perform the procedure 10 to 15 and 18 to 21 for reverse of order of removal

includes required replacement short parts (R part).

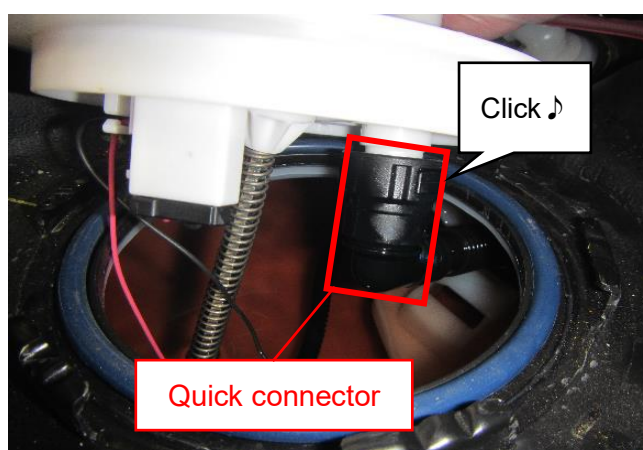
- Customer vehicle: Perform procedures 10 to 21 required referring to the vehicle Workshop manual below and reverse of order of removal includes required replacement of short parts (R part).

- Replace the CANISTER (MAIN) and VALVE, PRESSURE CONTROL with fuel breather hoses.
- Replace the CANISTER (SUB).
- Replace the FILTER,AIR and RING, 'O' (Qty 2)

10. Twist the breather hose to downward and drain reserved fuel refer to the VIDEO supplied from MC.



11. Push the quick connector all the way in using care. Make sure a click sound is heard.

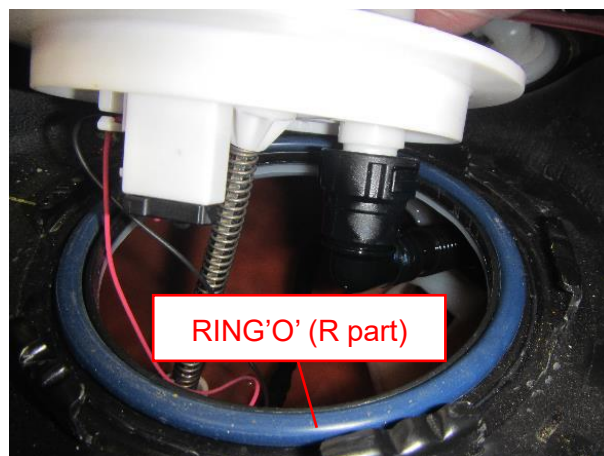


12. Double check that the quick connector has not disconnected. Pull the quick connector way to the arrow by hand shown picture below.

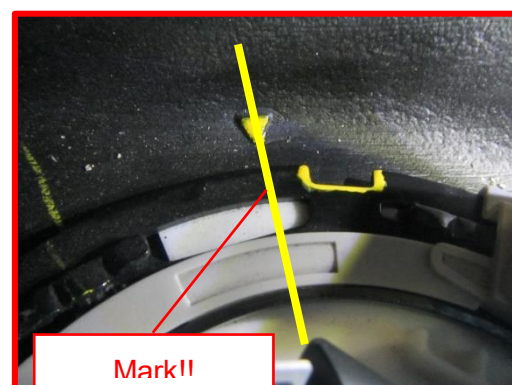
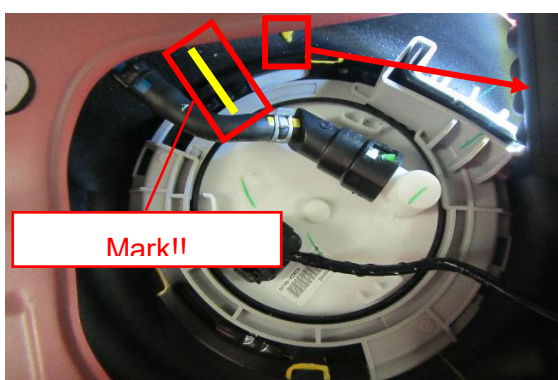
Caution: **Do not push the release button when you pull the quick connector.**



13. Keep the fuel gauge unit half in the fuel tank, move a new O-ring over the fuel gauge unit and apply to the fuel tank, then install the fuel gauge

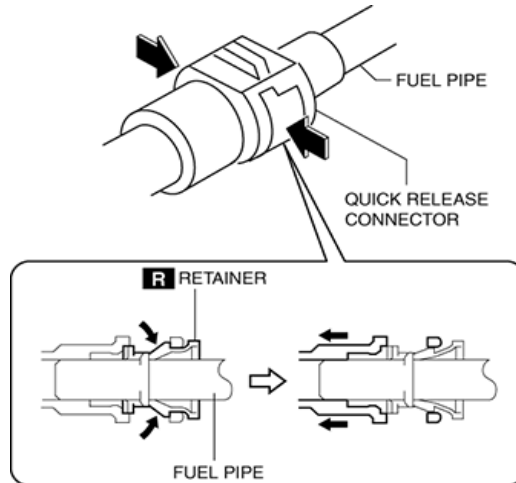
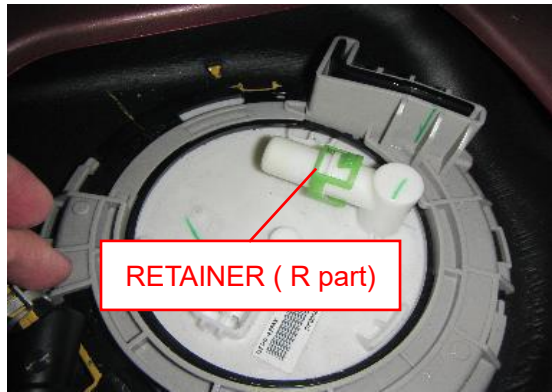


14. Make sure the marking is aligned before removal.

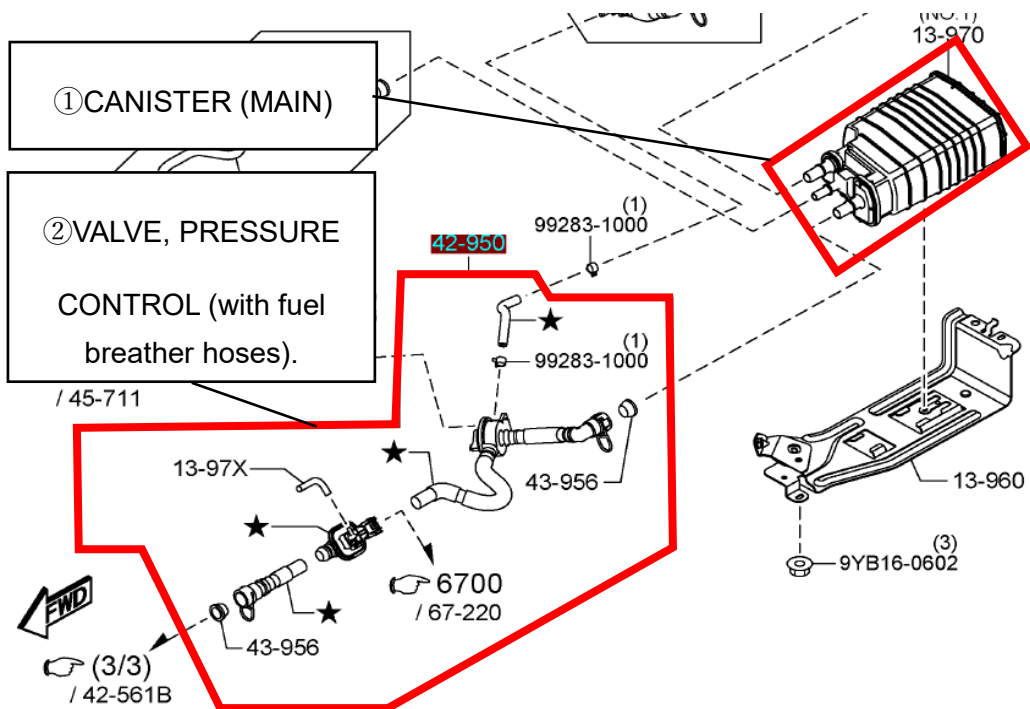


15. Install the QUICK RELEASE CONNECTOR.

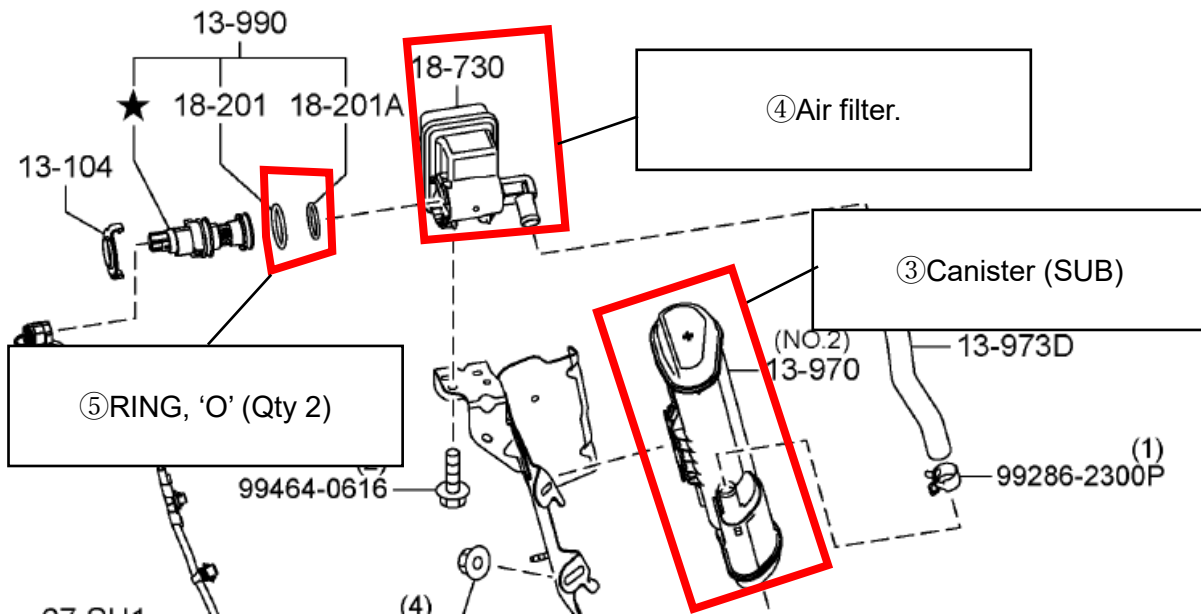
Caution: RETAINER is necessary replace if remove the QUICK RELEASE CONNECTOR.



16. Replace the CANISTER (main) and VALVE, PRESSURE CONTROL (with fuel breather hoses) refer to Workshop manual.



17. Replace the CANISTER (SUB) , FILTER,AIR with RING, 'O' (Qty 2) refer to Workshop manual. (US spec only)



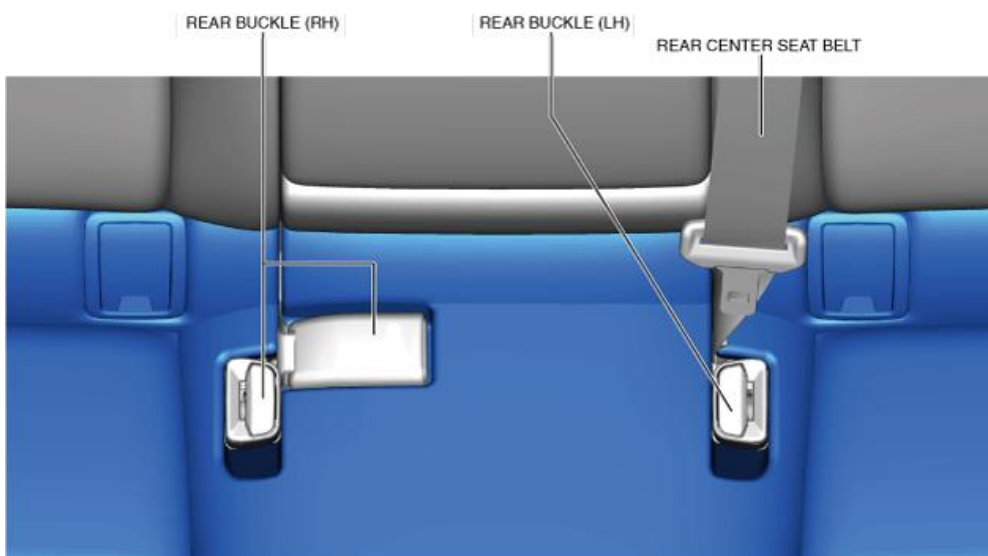
18. Check for fuel leakage where items were removed on this repair (quick connector, canister etc).

19. Install the service hole cover at rear right side.

20. Install the rear cushion seat.

Rear Seat Cushion Installation Note

After installing the rear seat cushion, place the rear buckle as shown in the figure.



21. Connect the negative battery terminal.

Follow the required procedure after negative battery terminal disconnection / connection in the vehicle Workshop manual.

22. Complete the "AFTER SERVICE PRECAUTION" refer to Workshop manual.

B. CAMPAIGN LABEL INSTALLATION

1. Fill out a blue "Campaign Label" (9999-95-065A-06) with Campaign No: "4520F", your dealer code, today's date.

CAMPAIGN LABEL

CAMPAIGN NO: _____

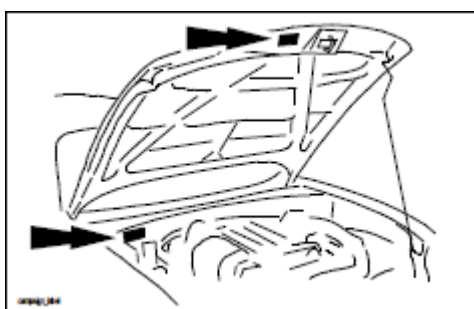
DEALER CODE: _____

DATE: ____/____/____

PIN 9999-95-065A-06

132b

2. Affix it to the hood or bulkhead as shown:



3. Return the vehicle to customer.

