



FIELD KIT

Vac-Tron Equipment, LLC

Trenchless
Okahumpka, FL 34762 USA

FIELD CAMPAIGN KIT # VVK00-0007

DATE
:

30 June 2020

For Dealer Reference: Service Bulletin # SVV2020010

Light Relocation, Reflector and Conspicuity Tape Installation Kit

CAMPAIGN TYPE:

Mandatory-Product Safety

CAMPAIGN CATEGORY:

Kit and Bulletin

MACHINE / ATTACHMENT MODEL (S) :	Serial Numbers		Kit Version
	Included	Excluded	
CS870GT	See attached listing on pages 13–14 of this Kit Instructions for specific VIN and Serial/Unit numbers.	N/A	VVK01
CSGT			
CS873GT			
LP303GT			
LP370XDT			
LP373GT			
LP373SGT			
LP373XDT			
LPMINI			
LPMINISK			
LPMINIXDT			
LP303GT	See attached listing on page 14 of this Bulletin for specific VIN and Serial/Unit numbers.	N/A	VVK02
LP303XDT			

LP373GT			
LP373SGT			



PURPOSE: INADEQUATE LIGHTING, REFLECTORS AND CONSPICUTITY TAPE

The lighting, side and rear reflectors and conspicuity tape do not meet US or Canada Federal Motor Vehicle Safety Standard (FMVSS/CMVSS) governmental regulation 108 for the United States, Canada and Mexico. When towing or parking the vacuum excavator on public roadways, a crash may occur resulting in death **or serious injury** resulting from a driver(s) of other vehicle(s) not seeing the vacuum excavator at night or during limited sunlight and strike the vacuum excavator. To reduce the potential of this occurring, vehicle lights will be relocated, additional reflectors and conspicuity tape are being added. Property or equipment damage may also occur.



WARNING: Failure to use shutdown procedure can result in unexpected hazard(s). Death or serious injury could result due to entanglement, crushing, cutting, or other hazardous contact. Follow Shutdown Procedure after operating, before performing any service or maintenance, and before transporting.

Shutdown Procedure (LP Mini)

STOPPING THE MACHINE

For your safety and the safety of others, follow shutdown procedure before working on the machine for any reason, including servicing, maintaining, cleaning, inspecting, unclogging or transporting machine, or as otherwise directed in Operator’s manual.

Step 1: Make sure end of vacuum hose is clear of all spoils, debris, and other materials.

Step 2: Turn *Water Pump Switch* to OFF.

Step 3: Push *Throttle Switch* to SLOW. Idle engine five minutes to allow vacuum pump to cool down. This helps to prevent the buildup of condensation.

Step 4: Turn *Keyswitch* to OFF to shut off engine. Remove the key.

Step 5: Pull trigger on any high-pressure water tool to relieve line pressure.

Step 6: Disassemble all water line connections, vacuum hoses, and tools. Stow properly on machine.

Step 7: Drain CVS Filter Housing / Cyclone.



WARNING: Do not point high pressure water tool in the direction of people when relieving the pressure.



WARNING: Failure to use shutdown procedure can result in unexpected hazard(s). Death or serious injury could result due to entanglement, crushing, cutting, or other hazardous contact. Follow Shutdown Procedure after operating, before performing any service or maintenance, and before transporting.

Shutdown Procedure (CS Units)

STOPPING THE MACHINE

For your safety and the safety of others, follow shutdown procedure before working on the machine for any reason, including servicing, maintaining, cleaning, inspecting, unclogging or transporting machine, or as otherwise directed in Operator's manual.

Step 1: Make sure end of vacuum hose is clear of all spoils, debris, and other materials.

Step 2: Push *Throttle Control* left several times to slow engine. Idle engine five minutes to allow vacuum pump (with *Reverse Flow Lever* – Neutral) to cool down. This helps to prevent the buildup of condensation.

Step 3: Turn *Keyswitch* OFF to shut down engine.

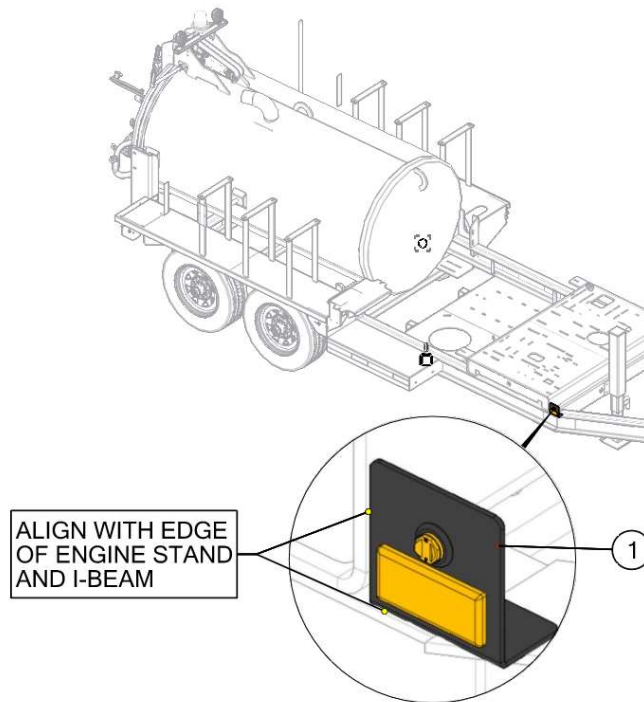
Step 4: Drain *Filter Housing*.



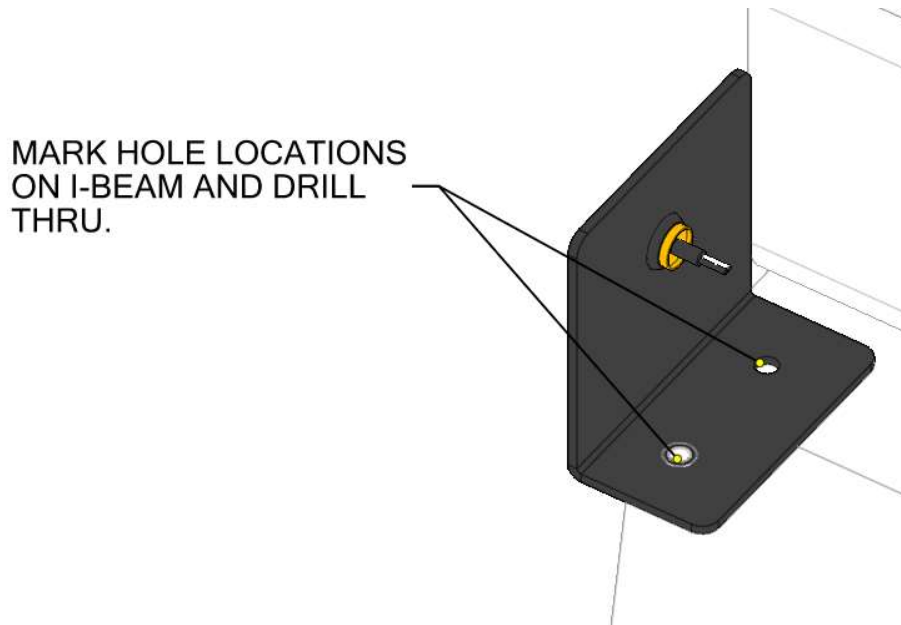
WARNING: Do not point high pressure water tool in the direction of people when relieving the pressure.

PROCEDURE 1:

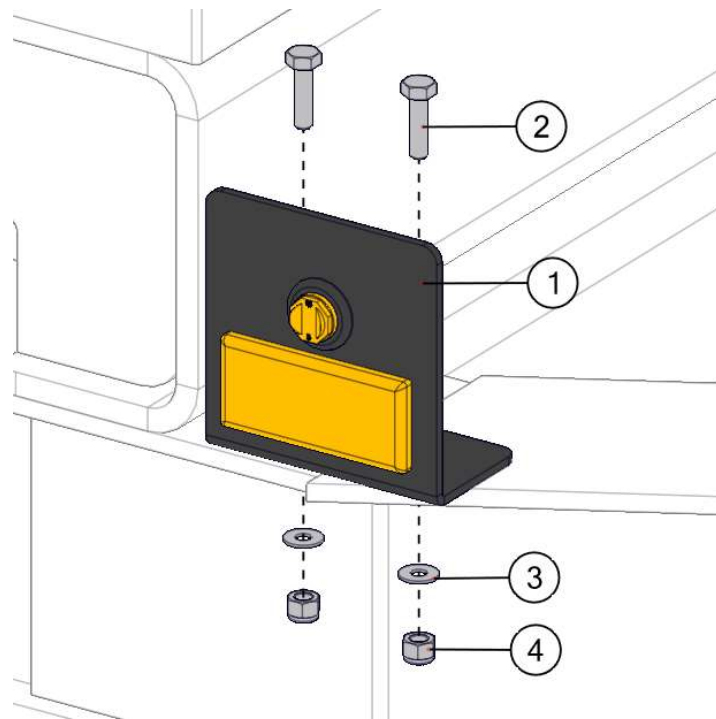
1. Align the bracket with the edge of the curb side I-beam as shown below. Ref. 1, Fig 1.



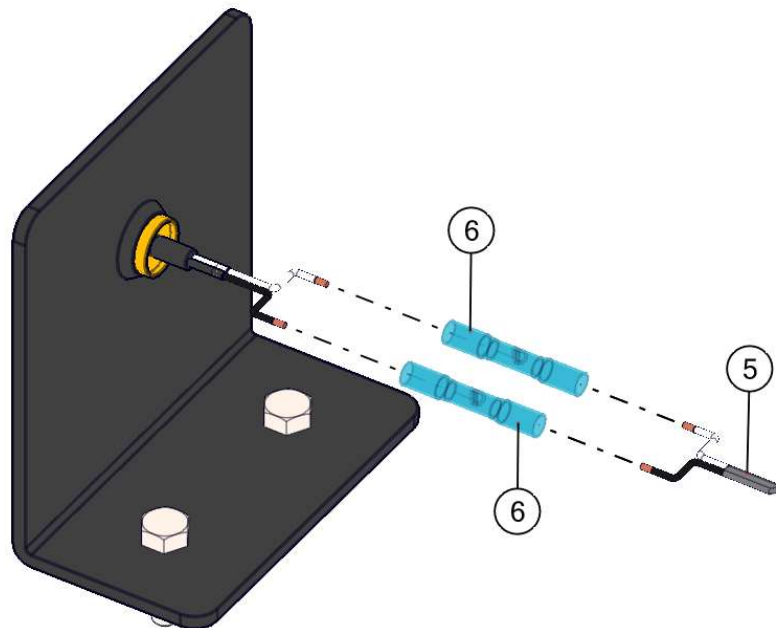
2. Mark the light bracket hole locations onto the I-beam and drill (2) Ø9/32" (7.15 mm) holes through the I-beam.



3. Attach the marker light bracket with the supplied hardware. Ref. 1, 2, 3, and 4, Fig. 1.

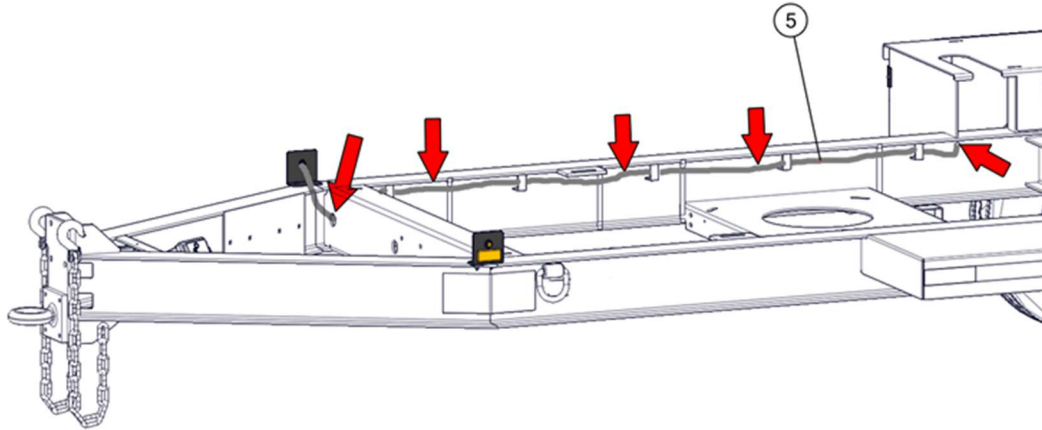


4. Connect one end of the 100" (2.54 m) length of dual core wire to the front side marker lamp using the butt connectors. Ref. 5 and 6, Fig. 1.

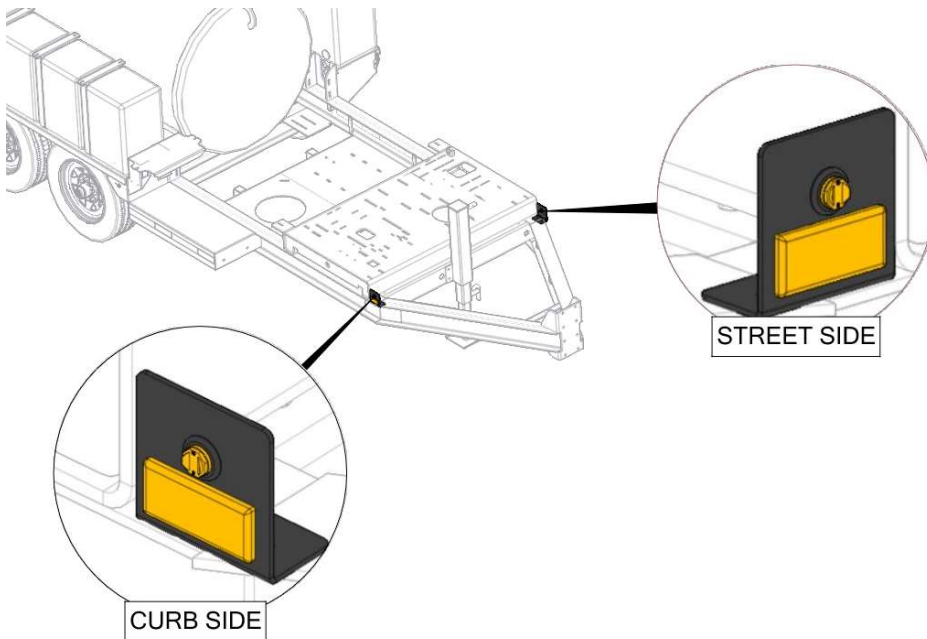


5. Place loom over wires for protection. Ref. 8, Fig. 1.

6. Run the wire through the cross member and inside of the I-Beam to connect with the front clearance marker lamp. Reference step 3, Procedure 2 for connecting the front side marker lamp and front clearance marker lamp.



7. Use supplied zip ties to fasten wire harness to trailer frame.
8. Complete all steps for the street side of the trailer.



PROCEDURE 2:

1. Remove the curb side marker light from the platform gusset and disconnect the wires. For units with LED marker lights shown in Figure A, retain the marker light

for future installation. The marker lights from units with incandescent lights as shown in Figure B may be discarded.

Figure A

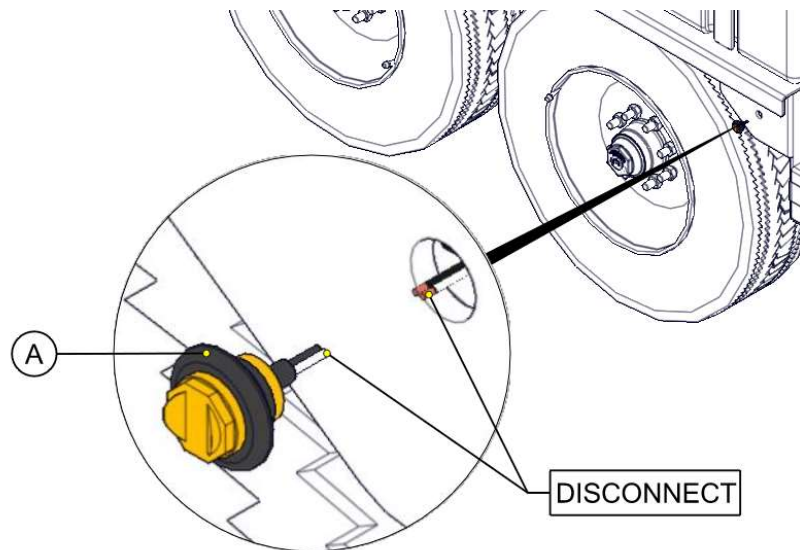
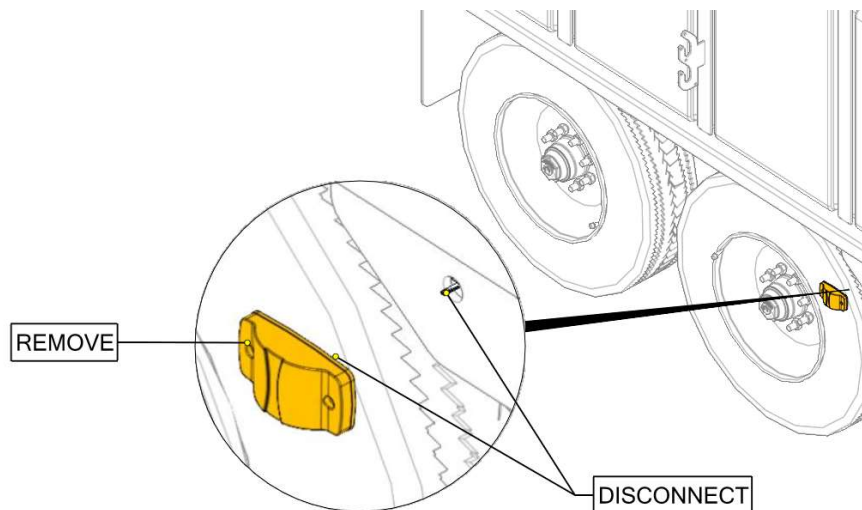


Figure B



2. Place the front clearance marker bracket on the gusset approximately 1-1/2" (3.81 cm) from the bottom as shown in Figure C. If the location of the antifreeze tank stand interferes with positioning the bracket properly, position the marker bracket just below the antifreeze tank stand as shown in Figure D. Mark the bolt locations on the gusset and drill (2) $\text{Ø}9/32$ " ($\text{Ø}7.15$ mm) holes. (Curb side shown). Ref. 1

Figure C

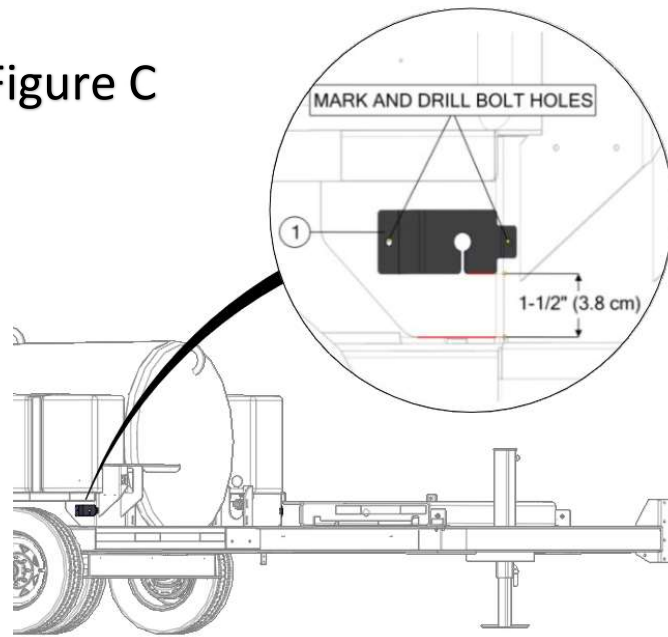
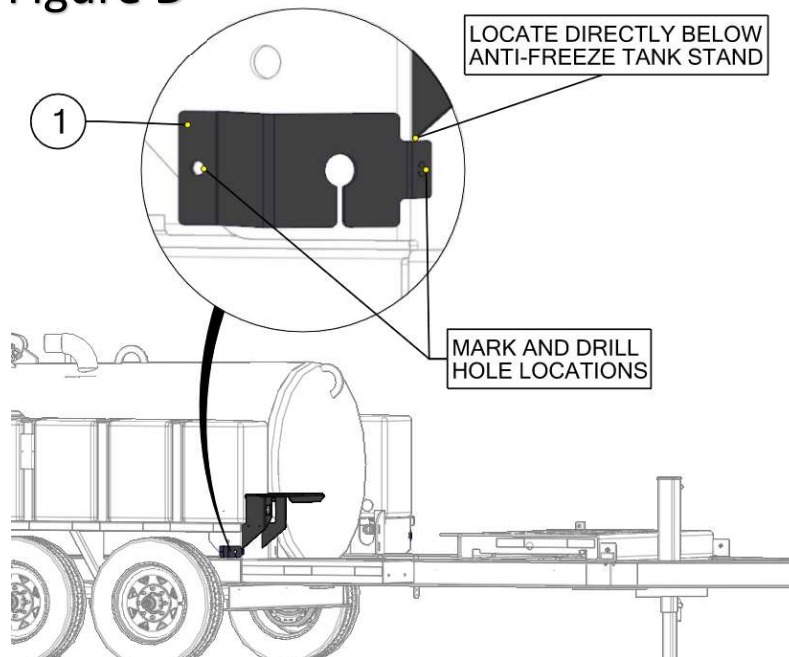
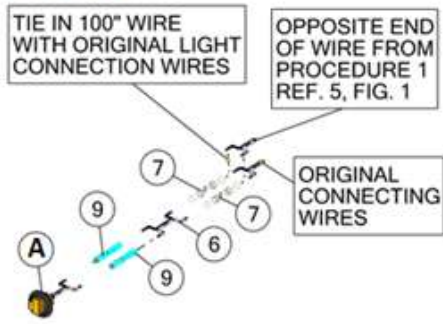


Figure D

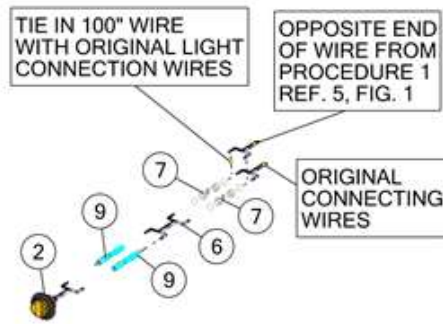


3. Use the 1 ft (30.48 cm) length of dual core conductor wire to reconnect the front clearance marker lamp and tie in with the 100" (2.54 m) length wire from the front side marker lamp. Use the 12-10 (yellow) and 16-14 (blue) heat seal butt connectors to connect all wires according to diagram below.

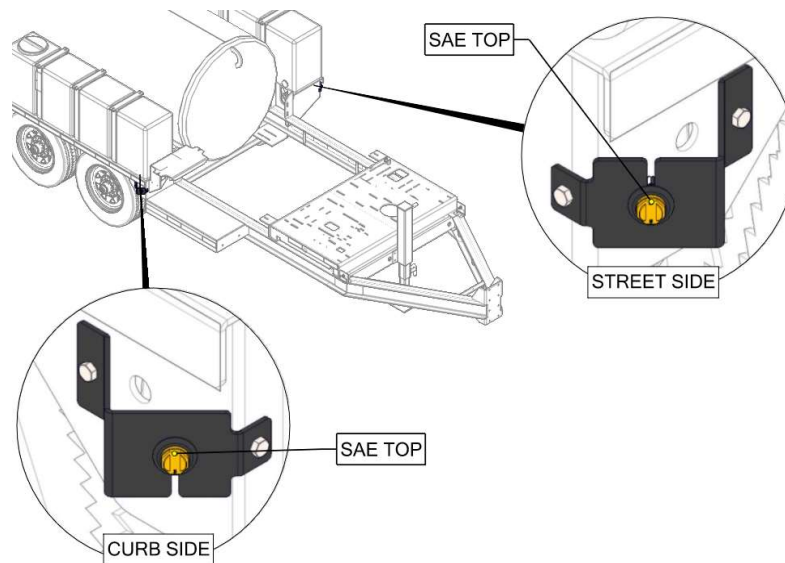
KIT VVK01



KIT VVK02



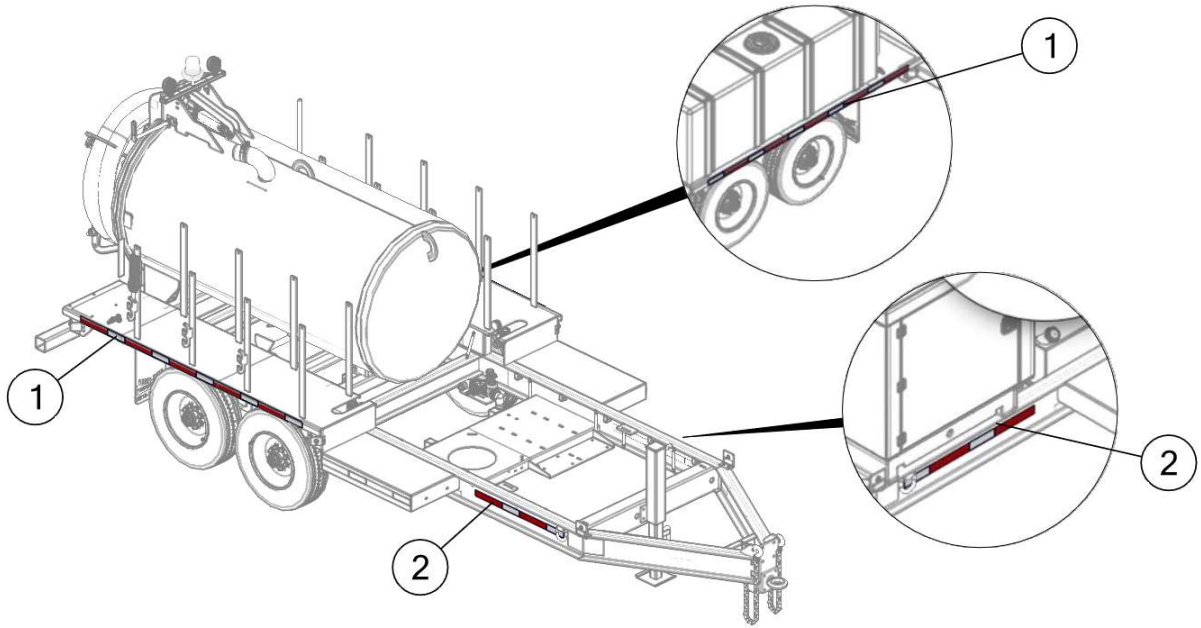
4. Insert the front clearance marker lamp into the front clearance marker bracket as shown. Ref A, Fig. 2 for VVK01. Ref 2, Fig 2 for VVK02. Refer to the illustration below for proper lamp orientation.
5. Attach the front clearance marker bracket with the hardware Ref. 3, 4, and 5 Fig. 2.
6. Loom all exposed wires. Ref. 8 Fig. 2.
7. Repeat all steps to connect the front clearance marker lamp on the street side of the trailer.



PROCEDURE 3:

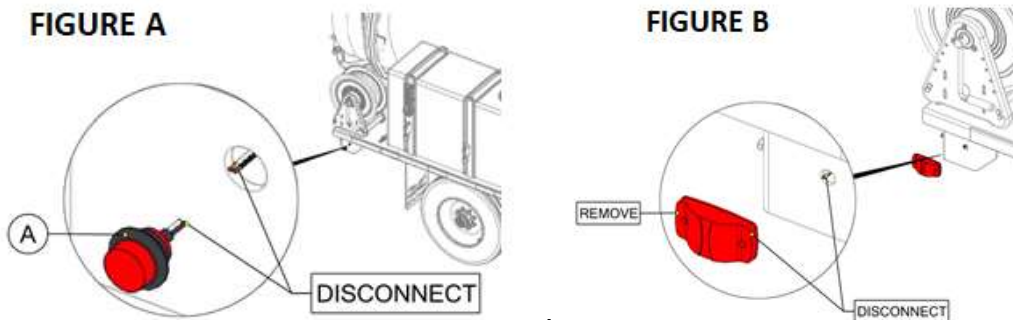
1. Clean area where the conspicuity tape will be installed with light soap and water. Areas with damaged paint or heavy corrosion should be prepped, painted, and thoroughly dry before applying conspicuity tape.
2. Refer to the illustration and install the conspicuity tape in the locations shown. Ref. 1 and 2, Fig. 3.

3. Repeat for the opposite side of the trailer.



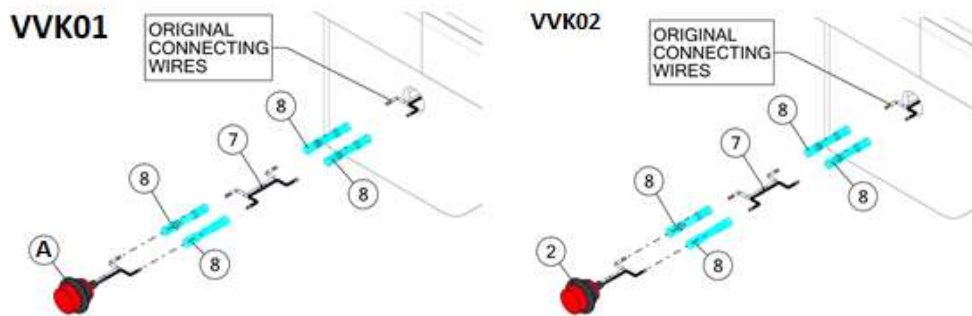
PROCEDURE 4:

1. Remove the existing rear corner/side clearance marker lamp from the gusset and disconnect the wires. For units with LED marker lights as shown in Figure A, retain the light for future installation. The incandescent lights as shown in Figure B may be discarded.

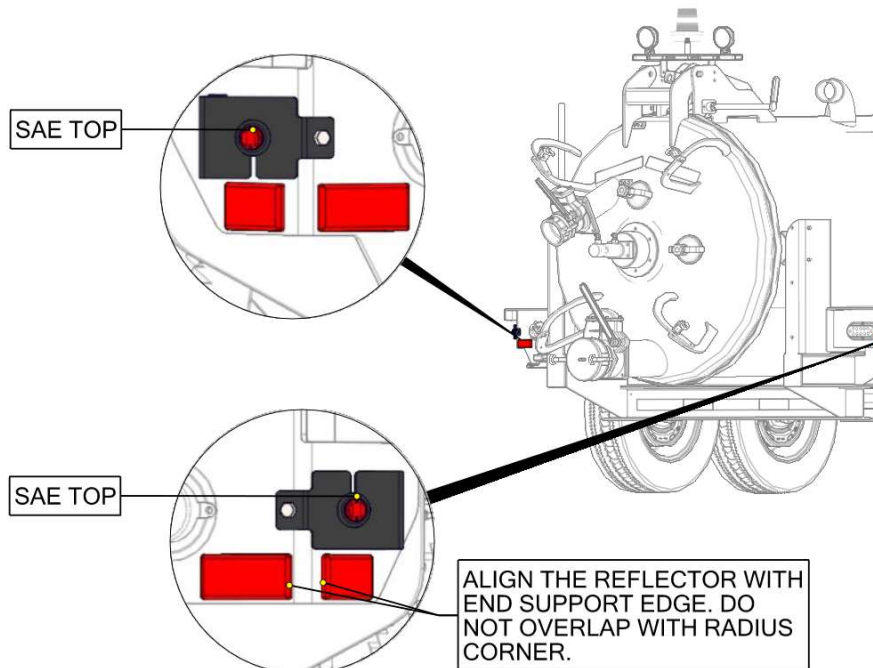


2. Place the rear corner/side clearance marker bracket on the support approximately 1-1/2" (3.81 cm) from the bottom as indicated in the illustration below. Mark the bolt locations on the support and drill (2) Ø9/32" (Ø7.15 mm) holes.

- Use the 1 ft (30.48 cm) length of dual core conductor wire to reconnect the rear corner/side clearance marker lamp using 16-14 butt connectors. Ref A, 7 and 8, Fig 4 for VVK01. Ref. 2, 7, and 8, Fig. 4 for VVK02.



- Attach the rear corner/side clearance marker bracket to the fender support with the hardware as shown Ref. 3, 4, and 5 Fig. 4.
- Loom all exposed wires. Ref. 9 Fig. 4.
- Insert the rear corner/side clearance marker lamp into the bracket as shown Ref 1 and A, Fig. 4.
- Clean area where the rear side marker reflectors will be installed with light soap and water. Areas with damaged paint or heavy corrosion should be prepped, painted, and thoroughly dry before applying the reflectors as shown.

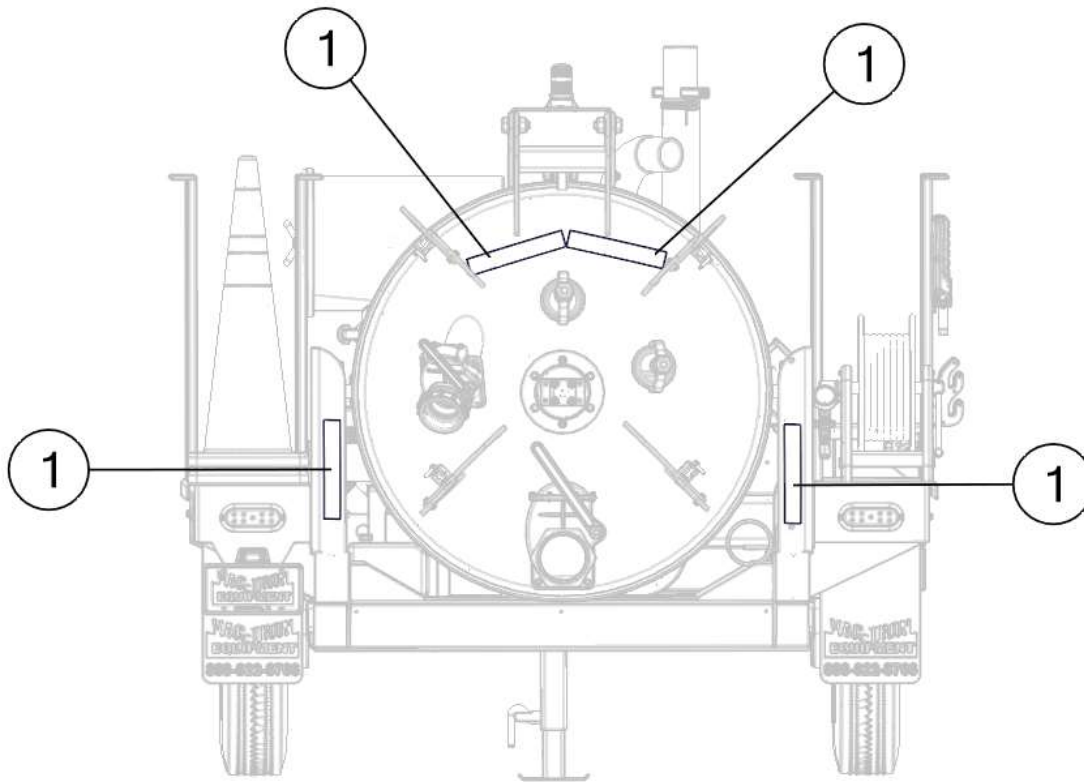


- Install the rear side marker reflector below the side marker bracket as shown.

9. Repeat all steps for the opposite side of the trailer.

PROCEDURE 5:

1. Clean area where the conspicuity tape will be installed with light soap and water. Areas with damaged paint or heavy corrosion should be prepped, painted, and thoroughly dry before applying the conspicuity tape.
2. Refer to the illustration and install each of the white conspicuity tape on the debris tank door and water tanks as shown Ref 1, Fig. 5.



AFFECTED MACHINES - VVK01-0007

MODEL	VIN	SERIAL/UNIT	MODEL	VIN	SERIAL/UNIT
CS870GT	5HZBF1928KLCK2146	1894999	CSGT	5HZB192W8LK002052	2023162
CS870GT	5HZBF1928KLBK2144	1899114	CSGT	5HZB192WXLK002053	2023173
CS870GT	5HZBF1926KLCK2145	1930699	CSGT	5HZB192W1LK002054	2023178
CS870GT	5HZBF192XKLCK2147	1934839	CSGT	5HZB192W3LK002055	2023183
CSGT	5HZB192W5KK002007	1895487	CSGT	5HZB192W5LK002056	2023188
CSGT	5HZB162W8KK002002	1895501	CSGT	5HZB192W1KK002019	2046647
CSGT	5HZB192WXKK002004	1897705	CSGT	5HZB192WXLK002036	2073512
CSGT	5HZB192W8KK002003	1902855	CSGT	5HZB192W8LK002035	2073541
CSGT	5HZB162W9KK002011	1913251	CSGT	5HZB192W7LK002057	2073549
CSGT	5HZB192W8KK002017	1923488	CSGT	5HZB192W1LK002040	2073561
CSGT	5HZB192W6KK002016	1928535	CSGT	5HZB192W3LK002041	2073595
CSGT	5HZB192W6LK002020	1940632	CSGT	5HZB192W7LK002043	2073608
CSGT	5HZB192W8LK002021	1940633	CSGT	5HZB192W9LK002044	2073609
CSGT	5HZB192W2KK002014	1945366	CSGT	5HZB192W5LK002042	2073613
CSGT	5HZB192W3LK002024	1950684	CSGT	5HZB192W9LK002061	2073623
CSGT	5HZB192WXLK002022	1950721	CSGT	5HZB192W0LK002062	2073638
CSGT	5HZB192W2LK002029	1950782	CSGT	5HZB192W2LK002063	2073663
CSGT	5HZB192W0LK002028	1950786	LP303GT	5HZBF1622HLAH1118	1927426
CSGT	5HZB192W9LK002027	1950803	LP370XDT	5HZBF1625JLCJ1222	2005959
CSGT	5HZB192W7LK002026	1950814	LP373GT	5HZBF1620JLCJ1211	1864156
CSGT	5HZB192W5LK002025	1950829	LP373GT	5HZBF1625JLJJ1439	1914201
CSGT	5HZB192W1LK002023	1950834	LP373GT	5HZBF1622JLAJ1138	1923538
CSGT	5HZB192W9LK002030	1962768	LP373GT	5HZBF1623JLMJ1495	1932518
CSGT	5HZB192W2LK002032	1962886	LP373GT	5HZBF1621JLCJ1220	2006437
CSGT	5HZB192W0LK002031	1964049	LP373GT	5HZBF162XHLHH1341	2008331
CSGT	5HZB192W4KK002015	1971399	LP373GT	5HZBF1623HLEH1205	2008708
CSGT	5HZB192W3LK002038	1986285	LP373GT	5HZBF162XJLBJ1147	2010653
CSGT	5HZB192W1LK002037	2003979	LP373GT	5HZBF1629JLJJ1458	2012850
CSGT	5HZB192W0KK002013	2008141	LP373GT	5HZBF1626KLAK1110	2014572
CSGT	5HZB192W6LK002034	2008671	LP373SGT	5HZBF1621JLFJ1369	2005828
CSGT	5HZB192W1KK002005	2010901	LP373XDT	5HZBF1627JLCJ1223	1864154
CSGT	5HZB192W9KK002012	2011084	LP373XDT	5HZBF1625HLHH1330	1864269
CSGT	5HZB192WXKK002018	2012897	LP373XDT	5HZBF1623JLCJ1221	1927420
CSGT	5HZB192W7KK002008	2013944	LP373XDT	5HZBF1625HLEH1206	2005829
CSGT	5HZB192W9KK002009	2014606	LP373XDT	5HZBF1627HLEH1207	2007180
CSGT	5HZB192W5KK002010	2014893	LP373XDT	5HZBF1629HLAH1116	2007255
CSGT	5HZB192W6LK002048	2017167	LP373XDT	5HZBF1621HLHH1356	2010572
CSGT	5HZB192W2LK002046	2017172	LP373XDT	5HZBF1629HLEH1208	2011222
CSGT	5HZB192W6LK002051	2017238	LP373XDT	5HZBF1627HLKH1442	2011839
CSGT	5HZB192W8LK002049	2017242	LPMINI	5HZF16209LK002007	1990829
CSGT	5HZB192W4LK002047	2023121	LPMINI	5HZF16200LK002008	1990830
CSGT	5HZB192W4LK002050	2023148	LPMINI	5HZF1620XLK002002	1991321

AFFECTED MACHINES - VVK01-0007					
MODEL	VIN	SERIAL/UNIT	MODEL	VIN	SERIAL/UNIT
LPMINI	5HZF16201LK002003	1991325	LPMINI	5HZF16209LK002010	2045110
LPMINI	5HZF16203LK002004	1991330	LPMINISK	5HZY160G9KK002001	1940693
LPMINI	5HZF16205LK002005	1991337	LPMINIXDT	5HZH1622XLK000101	1991361
LPMINI	5HZF16207LK002006	1991349	LPMINIXDT	5HZH16221LK000102	1991532
LPMINI	5HZF1620XKK002001	2006432	LPMINIXDT	5HZH16223LK000103	1991541
LPMINI	5HZF16202LK002009	2016987			

AFFECTED MACHINES - VVK02-0007					
MODEL	VIN	SERIAL/UNIT	MODEL	VIN	SERIAL/UNIT
LP303GT	5HZBF162XGLFG1188	2006721	LP373GT	5HZBF1623GLLG1282	2008479
LP303GT	5HZBF1626GLMG1294	2007219	LP373GT	5HZBF1628GLHG1227	2012857
LP303XDT	5HZBF1629GLLG1285	2005548	LP373GT	5HZBF1620GLGG1221	2014558
LP373GT	5HZBF162XGLHG1231	2006902	LP373SGT	5HZBF1624GLMG1293	2008723

Figure 1

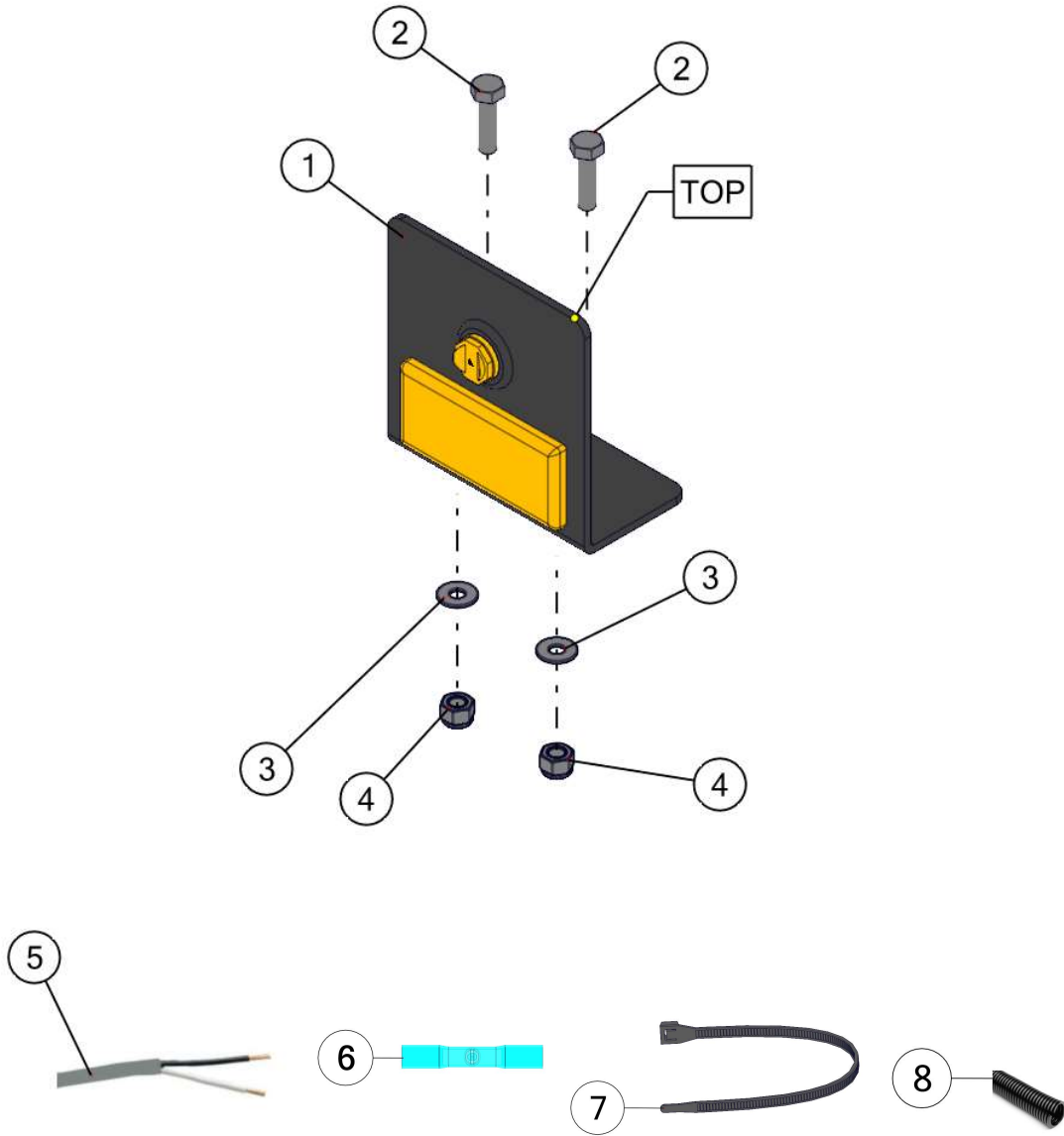


FIGURE 1 Parts List

REF. NO.	PART NO.	DESCRIPTION	VVK01 QTY.	VVK02 QTY.
1	B134-5749	FRONT SIDE MARKER LAMP BRACKET WITH REFLECTOR	2	2
2	P-1473	1/4-20 X 1 HEX HEAD BOLT	4	4
3	P-1472	1/4 ID FLAT WASHER	4	4
4	P-2782	1/4-20 NYLON LOCKNUT	4	4
5	P-1054	100" (2.54 m) LENGTH DUAL CORE CONDUCTOR WIRE	2	2
6	P-2369	16-14 HEAT SEAL BUTT CONNECTOR BLUE	4	4
7	P-1301	ZIP TIE	15	15
8	P-2762	1/2" SPLIT WIRE LOOM, 100" (2.54 m) LENGTH	2	2

Figure 2

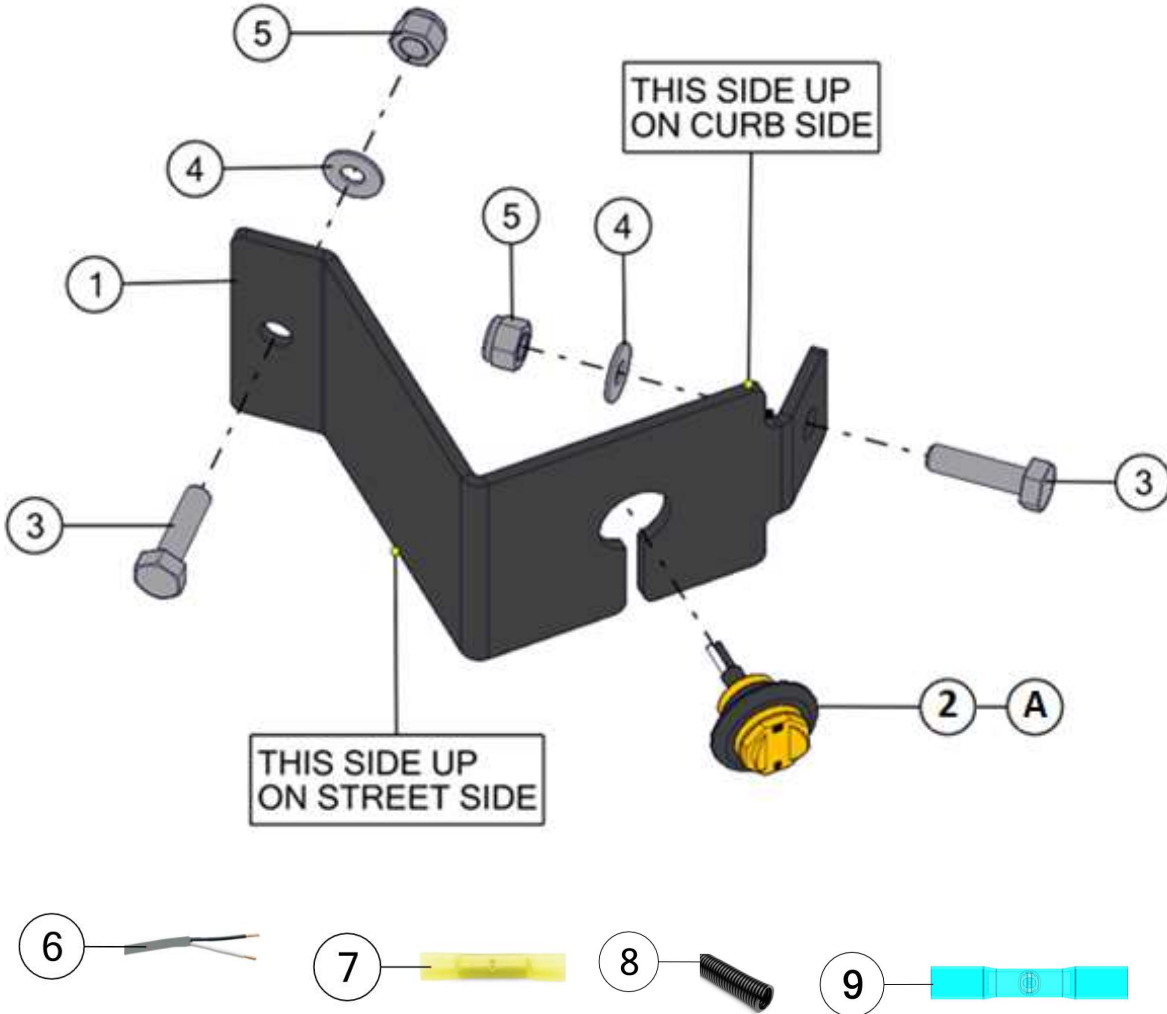


FIGURE 2 Parts List				
REF. NO.	PART NO.	DESCRIPTION	VVK01 QTY.	VVK02 QTY.
1	B134-5748	FRONT CLEARANCE MARKER LAMP BRACKET	2	2
A	P-4190	FRONT CLEARANCE MARKER LAMP (EXISTING ON TRAILER)	2	0
2	P-4190	FRONT CLEARANCE MARKER LAMP	0	2
3	P-1473	1/4-20 X 1 HEX HEAD BOLT	4	4
4	P-1472	1/4 ID FLAT WASHER	4	4
5	P-2782	1/4-20 NYLON LOCKNUT	4	4
6	P-1054	1' (30.48 cm) LENGTH DUAL CORE CONDUCTOR WIRE	2	2
7	P-1611	12-10 HEAT SEAL BUTT CONNECTOR	4	4
8	P-2762	1/2" SPLIT WIRE LOOM, 1' (30.48 cm) LENGTH	2	2
9	P-2369	16-14 HEAT SEAL BUTT CONNECTOR BLUE	4	4

F

Figure 3

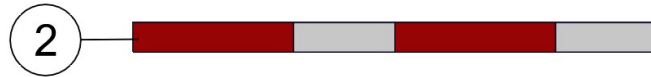
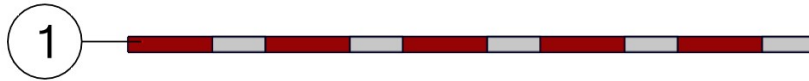


FIGURE 3 Parts List				
REF. NO.	PART NO.	DESCRIPTION	VVK01 QTY.	VVK02 QTY.
1	P-1426	2" (2.5 cm) WIDE, 101" (256.5 cm) LONG CONSPICUITY TAPE	2	2
2	P-1426	2" (2.54 cm) WIDE, 25" (63.5 cm) LONG CONSPICUITY TAPE	2	2

Figure 4

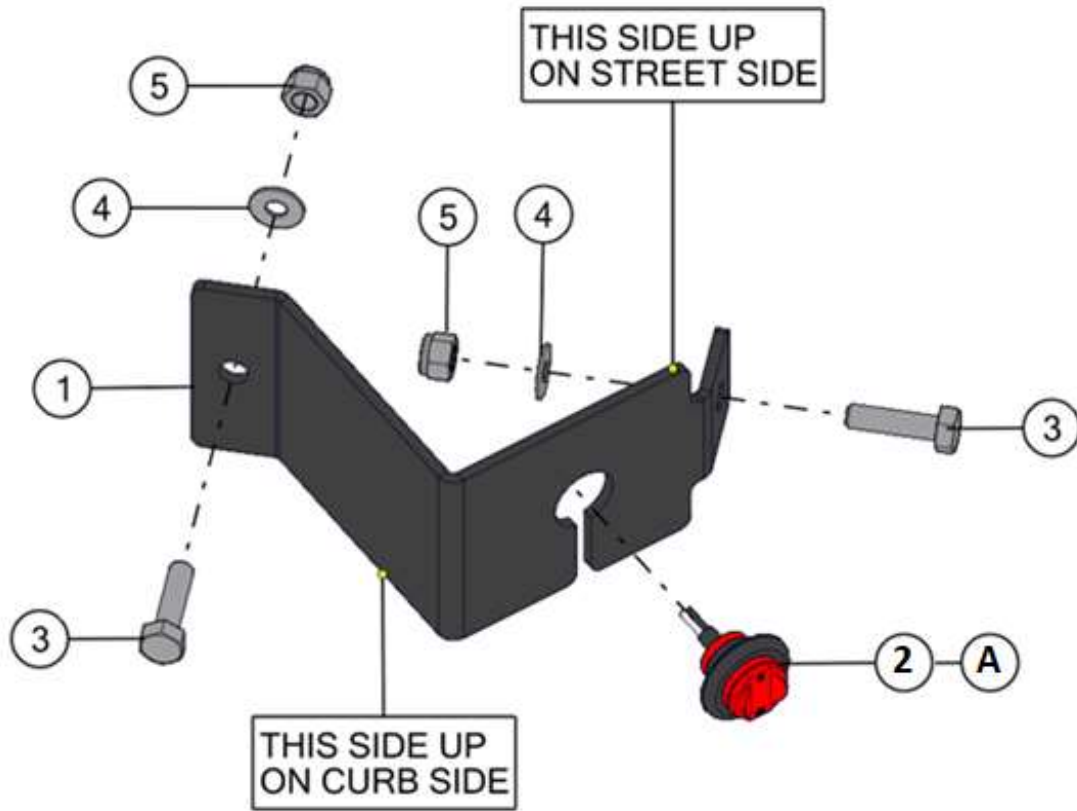


FIGURE 4 Parts List				
REF. NO.	PART NO.	DESCRIPTION	VVK01 QTY.	VVK02 QTY.
1	B134-5748	REAR CORNER/SIDE CLEARANCE MARKER LAMP BRACKET	2	2
A	P-4189	REAR CORNER/SIDE CLEARANCE MARKER LAMP (EXISTING ON TRAILER)	2	0
2	P-4189	REAR CORNER/SIDE CLEARANCE MARKER LAMP	0	2
3	P-1473	1/4-20 X 1 HEX HEAD BOLT	4	4
4	P-1472	1/4 ID FLAT WASHER	4	4
5	P-2782	1/4-20 NYLON LOCKNUT	4	4
6	P-5730	REAR SIDE MARKER REFLECTOR	4	4
7	P-1054	1' (30.48 cm) LENGTH DUAL CORE CONDUCTOR WIRE	2	2
8	P-2369	16-14 HEAT SEAL BUTT CONNECTOR BLUE	8	8
9	P-2762	1/2" SPLIT WIRE LOOM, 1' (30.48 cm) LENGTH	2	2

Figure 5

2



FIGURE 5 Parts List				
REF. NO.	PART NO.	DESCRIPTION	VVK01 QTY.	VVK02 QTY.
1	P-5783	WHITE CONSPICUITY TAPE	4	4