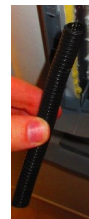
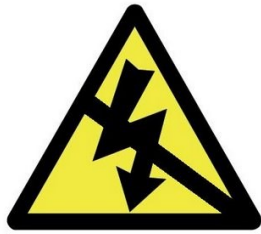


SOP02650 QAAR 9643 Add Protection to 12V Wire Routed Through Roof A/C Frame Tubing

Department: 32
 People Required: 1
 Time to Complete: 10min
 Date Created: Mar. 2, 2020
 Date Revised: Rev #:
 Created by Initial: GK Verified: HF



Make sure coach is not plugged in and AGS is disconnected so the air conditioner won't start.

You will need two lengths of 1/4" split tubing and a Phillips bit screw driver. (Do not use a power drill as some of the screws may strip.)

1



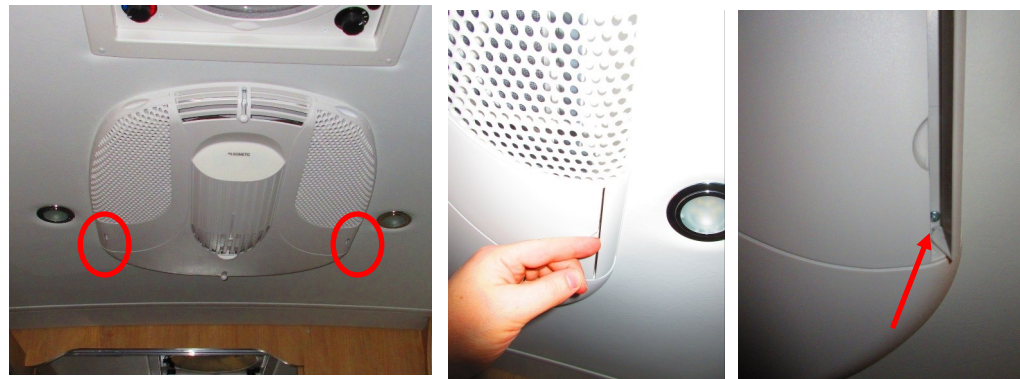
Remove each of the screens and set aside.

2



Remove the 2 screws holding the air conditioner shroud to the roof at each the front and rear louvers and set aside

3



Open each of the side panels near the rear to remove each of the screws and set aside.

4



Remove each of the middle side screws from the holes that are slightly larger than the others and set aside.

5



Remove the inner two screws from the shroud and set aside.

6



With all screws removed, gently pull down on the front then push the shroud towards the rear of the coach to release the clips.

7



Remove the 2 screws holding the rear grill in place.

8

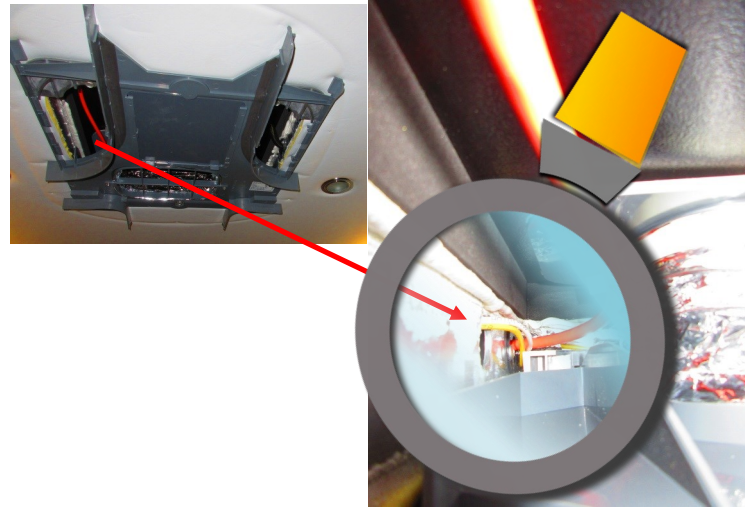


Push the ducting up into the A/C.

9

SOP02650 QAAR 9643 Add Protection to 12V Wire Routed Through Roof A/C Frame Tubing

Department: 32
 People Required: 1
 Time to Complete: 10min
 Date Created: Mar. 2, 2020
 Date Revised: Rev #:
 Created by Initial: GK Verified: HF



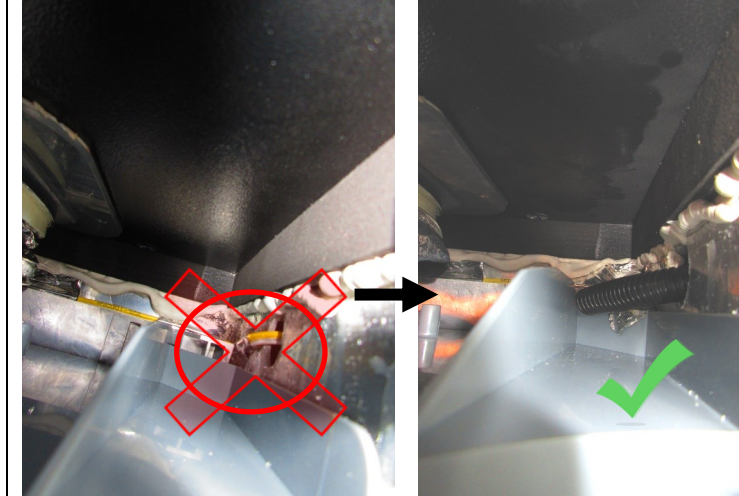
Find the 12V wire routed through the aluminum tube. Inspect for damages. If no damage continue. If damage can be seen contact LTV Warranty/Service at: 1-877-992-9906

10



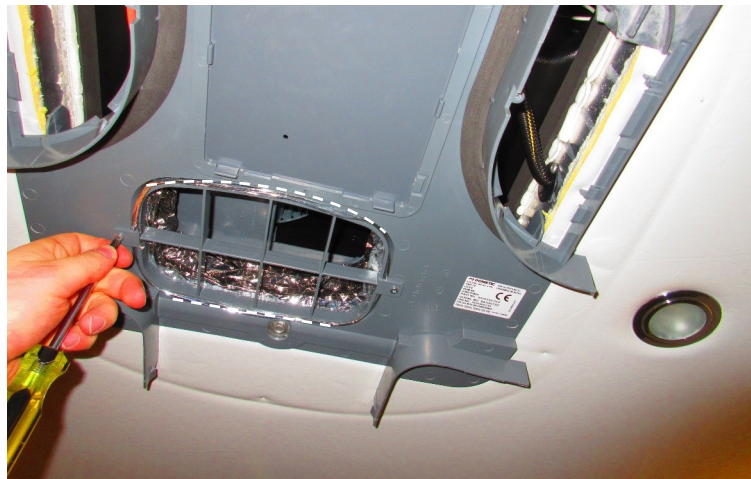
Slide a 100mm section of split tubing over top of the 12V wire so that the split tubing will protect the wire as it is routed through both walls of the aluminum tubing.

11



Do the same thing on the other side.

12



Reinstall the duct and grill in the back with the round side facing forward and the flat side to the rear.

13



Replace the shroud and reinstall all the screws in reverse order they were removed. Be careful not to strip the screw threading. Tighten until the shroud starts to dent the roof vinyl material.

14



Replace both front screens.

15

16

17

18