



# ◀ IMPORTANT UPDATE ▶

*The attached Dealer Letter has been updated. Refer to the details below.*

DATE	TOPIC
07/30/2020	Rental op codes and sublets updated on pages 6 and 7. Engine oil part number added on page 5.
07/07/2020	Parts Ordering Process was added for applicable repair fluids and the Warranty Reimbursement section has repair fluids removed as sublets.
06/24/2020	Multiple sections have been updated to explain replacement engine availability.

*The most recent update in the attached Dealer Letter will be highlighted with a red box.*

Please review this notification with your staff to assure that all relevant personnel have been briefed regarding this subject.

Thank you for your cooperation.



Lexus, A Division of Toyota Motor Sales, USA, Inc.  
6565 Headquarters Drive  
Plano, TX 75024  
(469) 292-4000

Original Publication Date: February 18, 2020

To: All Lexus Dealer Principals, General Managers, Service Managers, and Parts Managers

## SAFETY RECALL 20LA02 *(Remedy Notice)*

### Certain 2020 Model Year ES 300h Certain Engine Blocks Can Cause Engine Failure Leading to Fire Risk

Model / Years	Production Period	Approximate Total Vehicles	Approximate Stop Sale Dealer Inventory
2020 ES 300h	Mid-September 2019 - Mid-December 2019	1,100	600

STOP! DO NOT SELL NEW VEHICLES IN DEALER INVENTORY.

Refer to Dealer Inventory Procedures section for more details.

On February 06, 2020, Lexus will file a Defect Information Report (DIR) with the National Highway Traffic Safety Administration (NHTSA) informing the agency of our intent to conduct a voluntary Safety Recall on certain 2020 model year ES 300h vehicles.

#### Condition

Some of the subject vehicles may be equipped with an engine block that was manufactured incorrectly. This issue may cause coolant to leak internally and/or externally during normal engine operation. This can lead to engine noise, engine smoke, warning lights/malfunction indicator illumination, an audible chime sounding, and/or, in some cases, engine overheating and possible internal mechanical engine damage. If the mechanical engine damage occurs, it could cause engine oil to leak, which, in the presence of an ignition source, can lead to an increased risk of fire.

NOTE: If the engine stalls in a hybrid vehicle, the vehicle will enter a fail safe driving mode, allowing the driver to operate the vehicle at reduced power for certain distances to maneuver the vehicle to a safe location.

#### Remedy

Any authorized Lexus dealer will inspect the engine block casting serial number and if it is determined to be involved the dealer will replace the engine, including the engine block, with a new one **FREE OF CHARGE**.

#### Covered Vehicles

There are approximately 1,100 vehicles covered by this Safety Recall. No vehicles involved in this Safety Recall were distributed to Puerto Rico.

#### Owner Letter Mailing Date

Lexus will notify owners by early April 2020.

*Lexus makes significant effort to obtain current customer name and address information from each state through industry resources when mailing owner letters. In the event your dealership receives a notice for a vehicle that was sold prior to the Safety Recall announcement, it is the dealership's responsibility to forward the owner letter to the customer who purchased the vehicle.*

Please note that only owners of the covered vehicles will be notified. If you are contacted by an owner who has not yet received a notification, please **verify eligibility by confirming through TIS prior to performing repairs**. Dealers should perform the repair as outlined in the Technical Instructions found on TIS.

## Dealer Inventory Procedures

### New Vehicles in Dealership Inventory

There are approximately 600 vehicles in new dealer inventory as of February 04, 2020.



Under Title 49, Section 30112 of the United States Code, a dealer cannot sell, offer for sale, or introduce or deliver for introduction in interstate commerce a new motor vehicle when it is aware that the vehicle does not comply with an applicable Federal Motor Vehicle Safety Standard or contains a defect related to motor vehicle safety. Further, 49 Code of Federal Regulations §577.13 requires us to provide the following advisory: It is a violation of Federal law for a dealer to deliver a new motor vehicle or any new or used item of motor vehicle equipment (including a tire) covered by this notification under a sale or lease until the defect or noncompliance is remedied.

Lexus reimburses dealers for flooring costs associated with new vehicles held in dealership inventory until the recall remedy becomes available. Lexus provides these flooring reimbursements at 60-day intervals. Lexus reserves the right to withhold or charge-back any flooring reimbursement funds that may have been paid to the dealer if it determines that a new vehicle subject to a safety recall was sold without first being remedied.

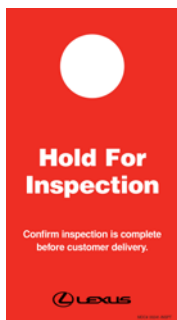
Vehicle Safety Recall completion should always be verified through TIS. We request your assistance to ensure involved vehicles are identified and not delivered prior to performing the remedy.

### NOTE:

- *New vehicles in dealer inventory subject to a Safety Recall must be remedied before delivery into commerce under a sale or lease. Dealer-to-dealer trades as well as vehicle sales between dealers should not be made until a vehicle is remedied.*
- Dealers can identify if any of their new and used inventory has any open campaigns in the Vehicle Inventory Summary available in Dealer Daily (<https://dealerdaily.lexus.com/>). The Vehicle Inventory Summary may take up to 4 hours to populate information for newly launched campaigns.

### Inspection Reminder Mirror Hang Tags for Covered Vehicles in New Dealer Stock

To easily recognize vehicles involved in this Safety Recall, each dealership should utilize Inspection Reminder Hang Tags. Inside the vehicle's glove box are stickers containing the VIN. Apply one of these stickers to the hang tag and install the hang tag in the vehicle. A sample copy of the Inspection Reminder Hang Tag has been included for your reference.



NOTE: Dealerships can order hang tags from the Material Distribution Center (MDC).

Part Number	Description	Quantity
00241-INSPT	Inspection Mirror Hang Tag	25 Per Pack

### Pre-Owned Vehicles in Dealer Inventory

To ensure customer satisfaction, Lexus requests that dealers complete this Safety Recall inspection on any used vehicles currently in dealer inventory that are covered by this Safety Recall prior to customer delivery. In cases where an involved engine block *IS* identified, the vehicle should not be delivered until remedy parts are available and repairs are completed.

Lexus expects dealers to use the attached Customer Contact and Vehicle Disclosure Form to obtain vehicle buyer information. Dealers are expected to provide a copy of the completed form, along with the most current FAQ, to the vehicle buyer. Lexus and the dealer may use this information to contact the customer when the remedy becomes available.

Keep the completed form on file at the dealership and send a copy to [quality\\_compliance@toyota.com](mailto:quality_compliance@toyota.com). In the subject line of the email, state "Disclosure Form 20LA02/20LB02" and include the VIN.

**NOTE:** Dealers can identify if any of their new and used inventory has any open campaigns in the Vehicle Inventory Summary available in Dealer Daily (<https://dealerdaily.lexus.com/>). The Vehicle Inventory Summary may take up to 4 hours to populate information for newly launched campaigns.

**L/Certified Vehicles**

L/Certified policy prohibits the certification of any vehicle with an outstanding Safety Recall, Special Service Campaign, or Limited Service Campaign. Thus, no affected units are to be designated, sold, or delivered as L/Certified until all applicable Safety Recalls, Special Service Campaigns, and Limited Service Campaigns have been completed on that vehicle.

**LCCS Service Loaners**

Lexus requests that dealers remove all LCCS service Loaner vehicles from service that are covered by a Safety Recall unless the defect has been remedied.

**Customer Handling, Parts Ordering, and Remedy Procedures****Customer Contacts**

Customers who receive the owner letter may contact your dealership with questions regarding the letter and/or the Safety Recall. Please welcome them to your dealership and answer any questions that they may have. A Q&A is provided to assure a consistent message is communicated.

Customers with additional questions or concerns are asked to please contact the Lexus Guest Experience Center (1-800-255-3987) - Monday through Friday, 7:00 am to 7:00 pm, Saturday 8:00 am to 5:00 pm Central Time.

**Salvage Title Vehicles**

Every attempt should be made to complete an open Safety Recall when circumstances permit, unless noted otherwise in the Safety Recall dealer letter.

For complete details on this policy, refer to Lexus Warranty Policy 4.15, "What Is Not Covered by The Lexus New Vehicle Limited Warranty".

**Media Contacts**

It is imperative that all media contacts (local and national) receive a consistent message. In this regard, all media contacts must be directed to Tania Saldana (859) 815-9968 in Toyota Corporate Communications. Please do not provide this number to customers. Please provide this contact only to media.

**Parts Ordering Process**

It is possible that parts for this campaign are either required to be ordered in Campaign Part Order Request (CPOR) on Service Lane, or have been placed on Manual Allocation Control (MAC) due to potential limited part availability. Please check the CPOR/MAC report on Dealer Daily for the most up-to-date parts ordering information.

*All Safety Recall, Service Campaign (SSC/LSC) parts are eligible for the Monthly Parts Return Program. Please refer to PANT Bulletin [2011-087](#) for campaign parts that are currently returnable under the Monthly Parts Return Program and for additional details.*

**Fluids Required ONLY When Engine Replacement Is Necessary:****Engine Oil:**

Part Number	Description	Quantity
00279-BLK16-01	GTMO 0W16 BK SN WTY	6 quarts

**Transmission Fluid:**

Part Number	Description	Quantity
00289-ATFWS	WORLD STANDARD AUTOMATIC TRANSMISSION FLUID	5 quarts

**Engine Coolant:**

Part Number	Description	Quantity
00272-SLLC2	SUPER LONG LIFE COOLANT	2 gallons

**NOTE:** Refer to the Remedy Procedures section for information regarding additional replacement parts.

**Technician Training Requirements**

The repair quality of covered vehicles is extremely important to Lexus. All dealership technicians performing this repair are required to successfully complete the most current version of the E-Learning course "Safety Recall and Service Campaign Essentials". To ensure that all vehicles have the repair performed correctly; technicians performing this repair are required to currently hold at least one of the following certification levels:

- Senior
- Master

Always check which technicians can perform the repair by logging on to <https://LCTPReports.com>. It is the dealership's responsibility to select technicians with the above certification level or greater to perform this repair. Carefully review your resources, the technician skill level, and ability before assigning technicians to this repair. It is important to consider technician days off and vacation schedules to ensure there are properly trained technicians available to perform this repair at all times.

**Remedy Procedures**

Refer to TIS for Technical Instructions on repair. Conduct all non-completed Safety Recalls and Service Campaigns on the vehicle during the time of appointment.

**Remedy Inspection Website**

The Technical Instructions will direct you to a website as part of the inspection procedure. For your reference, the website and default password are listed below:

<https://20TA04-20LA02-safety-recall.imagespm.info/>  
 Username: Dealer Code  
 Default Password: XXXXX

Each dealer only has a single account; please ensure that the reset password is communicated to all technicians and dealer associates that will be utilizing this website.

**NOTE: Any vehicles found to require engine replacement by prior entry into the website will need to be entered again to receive a replacement parts list specific for the vehicle.**

**Repair Quality Confirmation**

The repair quality of covered vehicles is extremely important to Lexus. To help ensure that all vehicles have the repair performed correctly, please designate at least one associate (someone other than the individual who performed the repair) to verify the repair quality of every vehicle prior to customer delivery.

**Vehicles Emission Recall Proof of Correction Form (California only)**

As this Safety Recall includes emission related parts, California dealers are requested to fill out the Vehicle Emissions Recall - Proof of Correction form after repairs have been completed. The vehicle owner may require this form for vehicle registration renewal. **It is important to note that the forms are an official state document and blank forms must be secured to prevent misuse.** Booklets can be ordered from the MDC (material number 00410-92007).

Please complete the form and provide it to the owner. The first non-completed VINs will be submitted to the California state DMV by early November 2020. If the vehicle owner's warranty claim will not be processed and paid prior to this date, please be sure to complete a form and provide it to a California owner.



**Warranty Reimbursement Procedures**

**Alternative Transportation Reimbursement Procedure**

Until the remedy is available, customers who are uncomfortable driving their vehicle during the interim phase may receive a loaner vehicle or alternative transportation which can be claimed up to \$45 per day.

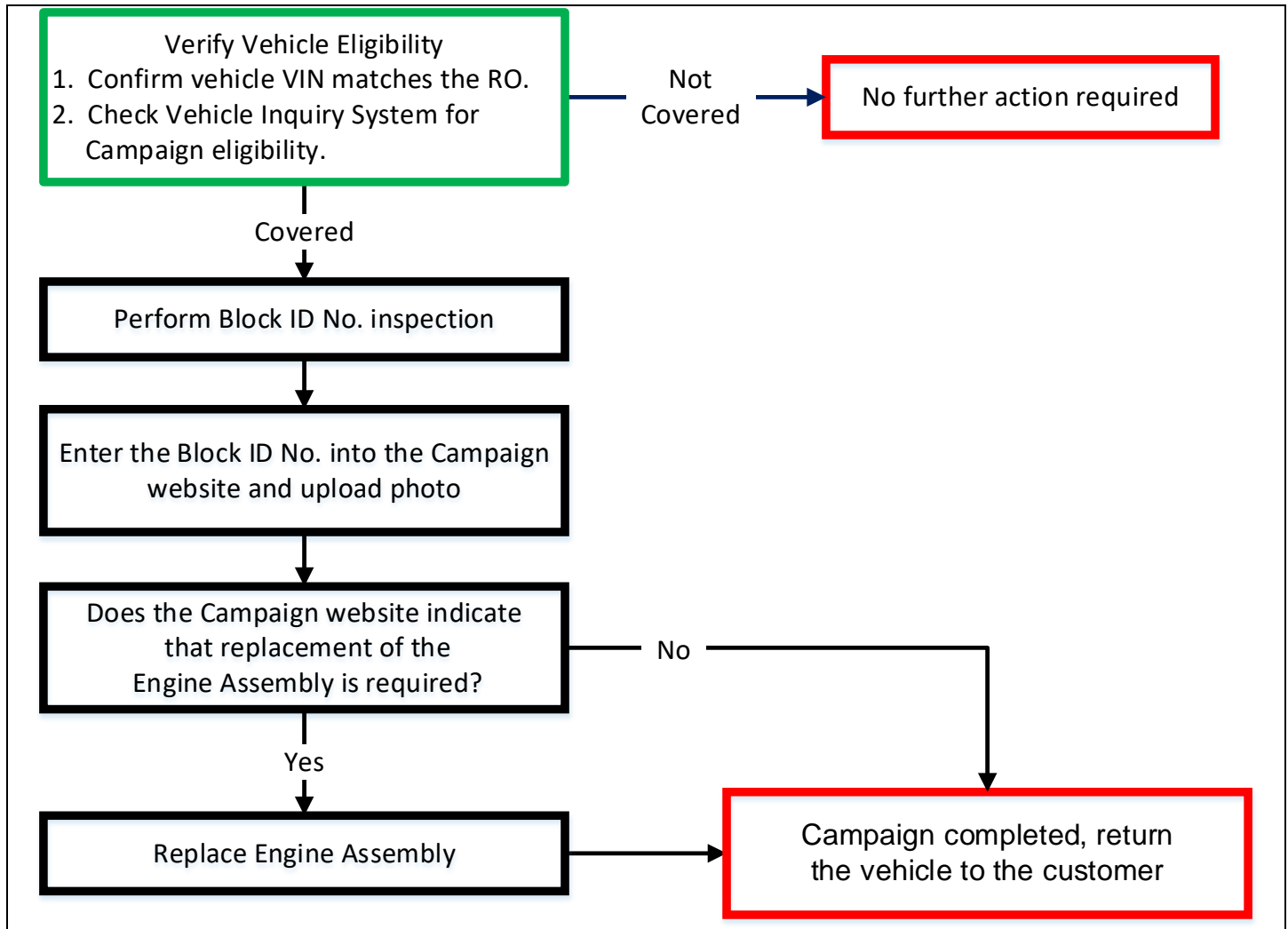
Op Code	Description
A25AL2	Vehicle Rental 1-30 Days
A25AL3	Vehicle Rental 31-60 Days
A25AL5	Vehicle Rental 61-90 Days
A25AL6	Vehicle Rental 91-120 Days
A25AL7	Vehicle Rental 121-140 Days

**NOTE: Rental Op Codes for rental beyond 100 days is expected to be available by mid-July 2020.**

**NOTE:**

- Rental invoice **MUST** be attached to all rental claims. These claims may be subject to debit if rental invoice is not attached.
- Rentals that exceed the maximum allowable daily rate will require DSPM authorization.
- Dealers will be allowed to file these Op Codes until September 21, 2020. After that date, no claims for alternative transportation reimbursement will be accepted.

**Warranty Reimbursement Procedure**



Op Code	Description	Flat Rate Hours
A25AL1	Inspect Block ID Number, no engine replacement necessary	0.5
A25AL4	Inspect and Replace the engine assembly	17.5

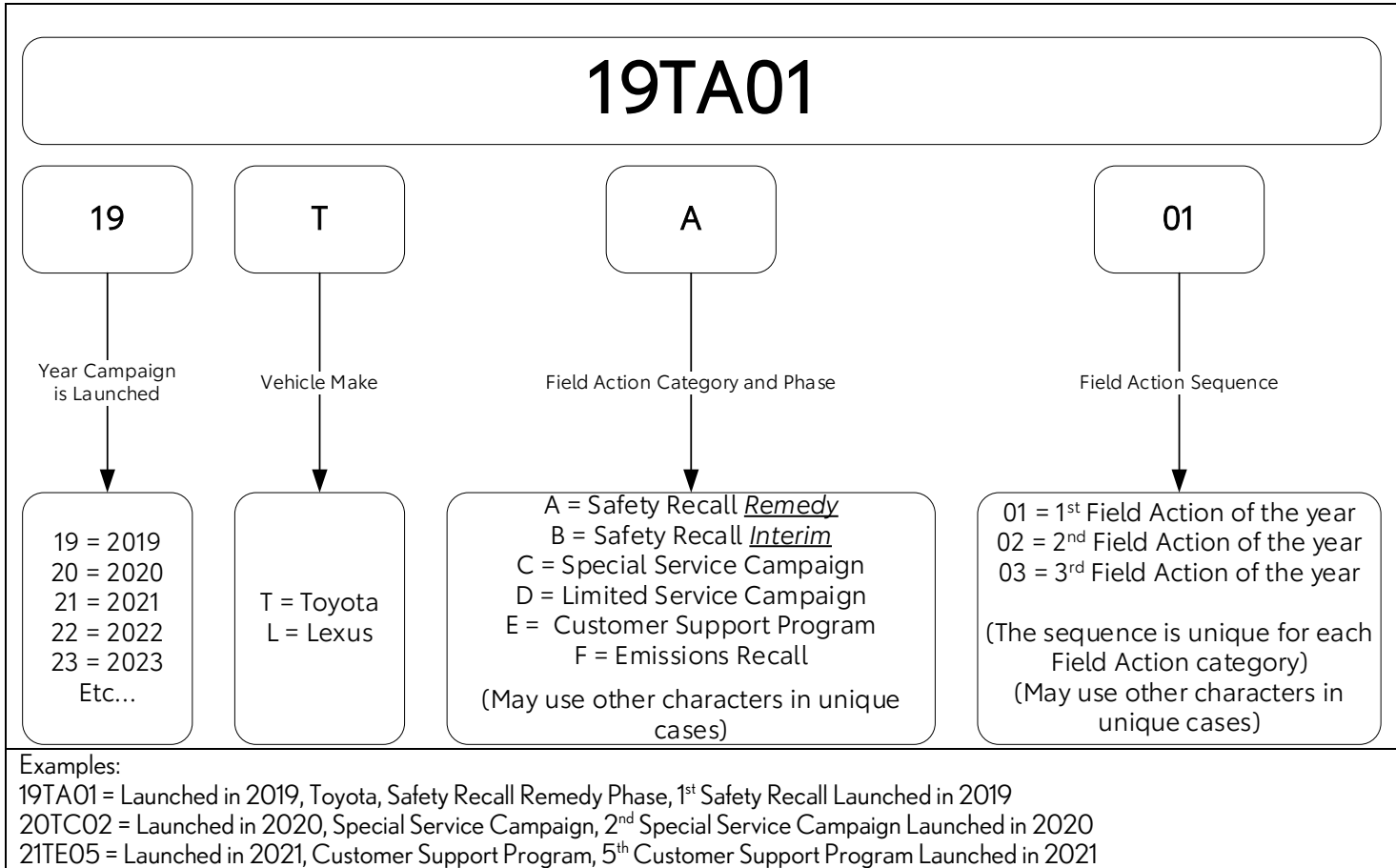
- The flat rate times include 0.1 hours for administrative cost per unit for the dealership.
- Towing can be claimed under Op Code A25AL1 or A25AL4 for a maximum of \$250 as sublet type “TW” in the event the customer requests vehicle pickup.)
  - **Towing invoice *MUST* be attached to all towing claims. These claims may be subject to debit if towing invoice is not attached.**
- Engine oil, Super Long Life Coolant, and AT fluid sublet reimbursements have been removed. These fluids can be claimed using the part numbers.
- A loaner vehicle or alternative transportation program can be claimed up to a maximum of 14 days at a maximum of \$45/day as a sublet type “RT” under Op Codes A25AL4 to accommodate the time from when affected block is identified, parts are ordered/delivered, and vehicle repaired.
  - **Rentals that exceed the maximum number of allowable days and/or dollars per day require DSPM authorization.**
  - **Rental invoice *MUST* be attached to all rental claims. These claims may be subject to debit if rental invoice is not attached.**

Lexus’ usual customer care amenities of car wash and fuel fill-up apply to this Safety Recall. Additionally, one day of rental vehicle expense (to a maximum of \$45/day) while the vehicle is being remedied or the cost of pick-up and delivery of the customer’s car may be claimed if required and subject to the guidelines published in the Safety Recall and Special Service Campaign General Procedures document on TIS.

**Claim Filing Accuracy and Correction Requests**

It is the dealer's responsibility to file claims correctly for this Safety Recall. This claim filing information is used by Lexus for various government reporting activities; therefore, claim filing accuracy is crucial. If it has been identified that a claim has been filed using an incorrect Op Code or a claim has been filed for an incorrect VIN, refer to Warranty Procedure Bulletin [PRO17-03](#) to correct the claim.

**Campaign Designation / Phase Decoder**



*Please review this entire package with your Service and Parts staff to familiarize them with the proper step-by-step procedures required to implement this Safety Recall.*

Thank you for your cooperation.

LEXUS, A DIVISION OF TOYOTA MOTOR SALES, U.S.A., INC.





## SAFETY RECALL 20LA02 (Remedy Notice)

Certain 2020 Model Year ES 300h  
Certain Engine Blocks Can Cause Engine Failure Leading to Fire Risk

Frequently Asked Questions  
Original Publication Date: February 18, 2020

# ◀ IMPORTANT UPDATE ▶

DATE	TOPIC
06/24/2020	Question 4 and 7 have been updated to explain that engine replacement is now available.

The most recent update will be highlighted with a red box.

**Q1: What is the condition?**

A1: Some of the subject vehicles may be equipped with an engine block that was manufactured incorrectly. This issue may cause coolant to leak internally and/or externally during normal engine operation. This can lead to engine noise, engine smoke, warning lights/malfunction indicator illumination, an audible chime sounding, and/or, in some cases, engine overheating and possible internal mechanical engine damage. If the mechanical engine damage occurs, it could cause engine oil to leak, which, in the presence of an ignition source, can lead to an increased risk of fire.

**Q1a: If the condition is present in a hybrid vehicle, will the vehicle stall?**



A1a: If the engine stalls in a hybrid vehicle, the vehicle will enter a fail safe driving mode, allowing the driver to operate the vehicle at reduced power for certain distances to maneuver the vehicle to a safe location.

**Q2: Are there any symptoms/warnings if the condition appears in a vehicle?**

A2: If the condition occurs, it can cause coolant to leak internally and/or externally during normal engine operation and may lead to engine noise, engine smoke, warning lights/malfunction indicator illumination, and/or an audible chime sounding.

**Q3: Which warning messages may be displayed if the condition is present?**

A3: If the condition occurs, the malfunction indicator lamp (MIL) shown below may illuminate in the instrument cluster. In addition to the malfunction indicator lamp, other warning lamps and message may also be displayed.

Malfunction Indicator Lamp (MIL)	Master Warning Lamp
	

NOTE: It is possible for the lights above to be illuminated and the condition not be related to this Safety Recall.

**Q4: What is Lexus going to do?**

A4: Any authorized Lexus dealer will inspect the engine block casting serial number and if it is determined to be involved the dealer will replace the engine, including the engine block, with a new one **FREE OF CHARGE**.

**NOTE (Customers who live in the state of California)**

The state of California requires the completion of Safety Recalls / Service Campaigns on emission related parts prior to vehicle registration renewal. In addition, the State requires that every vehicle must pass an emission test (SMOG Check) every two years and before it is sold. Without the completion of this **FREE** Safety Recall, the California Air Resources Board (CARB) will not allow your vehicle to be registered. State of California Regulations require Toyota to provide the Department of Motor Vehicles with a record of all vehicles that have not had the Safety Recall completed.

Your Lexus dealer will provide you with a Vehicle Emissions Recall Proof of Correction Form after the campaign has been completed. Please ensure you retain this form, because the DMV may require that you supply proof that the campaign has been completed during your vehicle registration renewal process.

**Q5: Which and how many vehicles are covered by this Safety Recall?**

A5: There are approximately 1,100 vehicles covered by this Safety Recall.

Model Name	Model Year	Approximate Total Vehicles	Production Period
ES 300h	2020	1,100	Mid-September 2019 - Mid-December 2019

**Q5a: Are there any other Lexus/Toyota/Scion vehicles covered by this Safety Recall in the U.S.?**

A5a: Yes, certain 2020 model year Toyota Avalon HV, Camry, Camry HV and certain 2019 - 2020 model year RAV4, RAV4 HV vehicles are covered by this Safety Recall.

**Q6: How does Lexus obtain my mailing information?**

A6: Lexus uses an industry provider who works with each state's Department of Motor Vehicles (DMV) to receive registration or title information, based upon the DMV records. Please make sure your registration or title information is correct.

**Q7: How long will the remedy inspection take?**

A7: The remedy will take approximately 1 hour for inspection. If it is determined that engine replacement is necessary, it will take up to 2 weeks to procure a new engine and install it in your vehicle. During this time, a loaner vehicle will be provided to you.

**Q8: What if I have additional questions or concerns?**

A8: If you have additional questions or concerns, please contact the Lexus Guest Experience Center at 1-800-255-3987 Monday through Friday, 7:00 am to 7:00 pm, Saturday 8:00 am to 5:00 pm Central Time.



This notice applies to your vehicle:  
[VIN]

**URGENT SAFETY RECALL**

This is an important Safety Recall. The remedy will be performed **FREE OF CHARGE** to you.

**IMPORTANT SAFETY RECALL (*Remedy Notice*)**

**Certain 2020 Model Year ES 300h  
Certain Engine Blocks Can Cause Engine Failure Leading to Fire Risk  
NHTSA Recall No. 20V-064**

Dear (customer's First/Last name)

This notice is sent to you in accordance with the National Traffic and Motor Vehicle Safety Act. Lexus has decided that a defect, which relates to motor vehicle safety, exists in certain 2020 model year ES 300h vehicles.

You received this notice because our records, which are based primarily on state registration and title data, indicate that you are the current owner.

**What is the condition?**

Some of the subject vehicles may be equipped with an engine block that was manufactured incorrectly. This issue may cause coolant to leak internally and/or externally during normal engine operation. This can lead to engine noise, engine smoke, warning lights/malfunction indicator illumination, an audible chime sounding, and/or, in some cases, engine overheating and possible internal mechanical engine damage. **If the mechanical engine damage occurs, it could cause engine oil to leak, which, in the presence of an ignition source, can lead to an increased risk of fire.**

**What should you do?**

**Please contact any authorized Lexus dealer to schedule an appointment to have the remedy performed as soon as possible.**

***Your local Lexus dealer will be more than happy to answer any of your questions.***

- ✓ To find a dealer near you, visit [www.lexus.com/dealers](http://www.lexus.com/dealers).
- ✓ For more information on this and other Safety Recalls, including Frequently Asked Questions, visit [www.lexus.com/recall](http://www.lexus.com/recall). Input your full 17-digit Vehicle Identification Number (VIN) noted above to review information specific to your vehicle.
- ✓ If you require further assistance, please visit <http://Lexus.com/contact> for options to contact the Lexus Guest Experience Center.

## What will Lexus do?



Any authorized Lexus dealer will inspect the engine block casting serial number and if it is determined to be involved the dealer will replace the engine, including the engine block, with a new one **FREE OF CHARGE**.

**NOTE:** Due to COVID-19, production of replacement engines is delayed. If your vehicle is identified as requiring a replacement engine, a loaner vehicle will be offered until the remedy can be performed.

### *This is an important Safety Recall*

The remedy will take approximately 1 hour for inspection. If it is determined that engine replacement is necessary, a loaner vehicle will be provided to you.

If the condition occurs, the malfunction indicator lamp (MIL) shown below may illuminate in the instrument cluster. In addition to the malfunction indicator lamp, other warning lamps and message may also be displayed. The specific lamp(s) and message(s) that is/are displayed may vary depending upon the specific model of vehicle, and if present then please schedule an appointment with any authorized Lexus dealer immediately.

Malfunction Indicator Lamp (MIL)	Master Warning Lamp
	

If the vehicle is experiencing the condition described and you are unable to drive the vehicle to the dealership, please contact your local authorized Lexus dealer who will arrange for vehicle pickup.

**NOTE:** It is possible for the lights above to be illuminated and the condition not be related to this Safety Recall.

### What if you live in California and do not have this Safety Recall Campaign performed?

The state of California requires the completion of Safety Recalls / Service Campaigns on emission related parts prior to vehicle registration renewal. In addition, the State requires that every vehicle must pass an emission test (SMOG Check) every two years and before it is sold. Without the completion of this **FREE** Safety Recall Campaign the California Air Resources Board (CARB) will not allow your vehicle to be registered. State of California Regulations require Lexus to provide the Department of Motor Vehicles with a record of all vehicles that have not had the Safety Recall Campaign completed.

Your Lexus dealer will provide you with a Vehicle Emissions Recall Proof of Correction Form after the campaign has been completed. Please ensure you retain this form, because the DMV may require that you supply proof that the campaign has been completed during your vehicle registration renewal process.

### What if you are not the owner or operator of this vehicle?

*If you are a vehicle lessor*, Federal Law requires that any vehicle lessor receiving this recall notice must forward a copy of this notice to the lessee within ten days.

*If you know the current owner or operator*, please forward this letter to them.

*If you would like to update your vehicle ownership or contact information*, please visit <https://www.toyota.com/recall/update-info-lexus>. You will need your full 17-digit Vehicle Identification Number (VIN) to input the new information.

If you believe that the dealer or Lexus has failed or is unable to remedy the defect within a reasonable time or without charge, you may submit a complaint to the Administrator, National Highway Traffic Safety Administration, 1200 New Jersey Avenue S.E., Washington, D.C. 20590, or call the toll free Vehicle Safety Hot Line at 1-888-327-4236 (TTY: 1-800-424-9153), or go to <http://www.safercar.gov>.

We have sent this notice in the interest of your continued satisfaction with our products. We sincerely regret any inconvenience this condition may have caused you.

Thank you for driving a Lexus.

Sincerely,

Lexus  
A Division of Toyota Motor Sales



Lexus, a Division of Toyota Motor Sales, USA, Inc.  
6565 Headquarters Drive  
Plano, TX 75024  
(469) 292-4000

## CUSTOMER CONTACT & VEHICLE DISCLOSURE FORM

This form is not applicable for new vehicles in dealership inventory and L/Certified Vehicles

This vehicle is involved in a Safety Recall. At this time, remedy parts are not available and the remedy has **NOT** been performed. I understand that the vehicle will need to be returned to an authorized Lexus dealer to have the remedy performed at **NO CHARGE** when the remedy is available.

Customer Signature \_\_\_\_\_

Lexus recommends that you register with the Lexus Owners Community at <http://www.lexus.com/drivers/> and regularly check recall applicability using [www.lexus.com/recall](http://www.lexus.com/recall) or [www.safercar.gov](http://www.safercar.gov). You will need to input your 17-digit Vehicle Identification Number (VIN).

VIN

Campaign Code

Model \_\_\_\_\_

Model Year \_\_\_\_\_

### Customer Information

Customer Name \_\_\_\_\_

Customer Email \_\_\_\_\_

Customer Address \_\_\_\_\_

Home Phone # \_\_\_\_\_

\_\_\_\_\_

Mobile Phone # \_\_\_\_\_

\_\_\_\_\_

Date \_\_\_\_\_

*Please provide this information so that Lexus or your dealer can notify you when the remedy becomes available. This information will only be used for campaign communications. If you'd like to update your preferred contact information in the future, visit [www.lexus.com/drivers](http://www.lexus.com/drivers) or contact us at 1-800-255-3987.*

### Dealer Information

Dealer Name/Address \_\_\_\_\_

Dealer Code \_\_\_\_\_

\_\_\_\_\_

Dealer Phone Number \_\_\_\_\_

\_\_\_\_\_

Dealer Staff Name \_\_\_\_\_

\_\_\_\_\_

Dealer Staff Signature \_\_\_\_\_