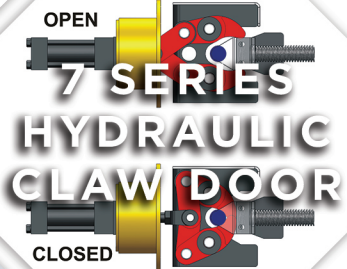




The Industry Innovator



CVS FILTRATION HOUSING



AIR SERIES

AIR 573/873 SDT

DRY EXCAVATION SERIES

Super Diesel Trailer

OPTIONAL REMOTE DEBRIS TANK



WWW.VACTRON.COM

1-888-VAC-TRON

822-8766



GENERAL DIMENSIONS AND WEIGHTS - SKID:

Length: 14.75' (4.5m) (573 Model)
 Length: 16.4' (5m) (873 Model)
 Height: 82" (208m)
 Empty Weight: 6,040lbs (2,740kg) (573 Model)
 Empty Weight: 6,340lbs (2,876kg) (873 Model)
 Width: 93" (236cm)

GENERAL DIMENSIONS & WEIGHTS - TRAILER:

Empty Weight: 6,820lbs (3093.5kg) (573 Model)
 Empty Weight: 7,120lbs (3229.6kg) (873 Model)
 Empty Weight: 8,480lbs (3846.5kg) (873 Heavy)
 Length: 19.25' (5.9m) (573 Model)
 Length: 22.4' (6.8m) (873 Model)
 Width: 93" (236.2cm)
 Height: 90" (228.6cm)
 Brake Type: Electric
 Hitch Type: Pintle
 GVWR: 12,000lbs (5,443kg) (573 Model)
 GVWR: 14,000lbs (6,350kg) (573 Heavy)
 GVWR: 14,000lbs (6,350kg) (873 Model)
 GVWR: 20,000lbs (9,072kg) (873 Heavy)
 Trailer Axles: Tandem

ENGINE AIR 573/873 SDT:

Horsepower: 83 hp (612kW) Yanmar diesel
 Enclosure: Yes
 Fuel Tank Capacity: 30gal (114L)

AIR COMPRESSOR:

Air flow: 185cfm
 Air pressure: 150psi
 Air hose length: 50' (15m)
 Air hose size: 1" (3cm)

WATER TANK:

Water Tank Capacity: 200gal (757L) (573/873 Models)
 Opt: 300gal (1,136L) (573 Heavy)
 Opt: 400gal (1,515L) (873 Heavy)
 Number of Tanks: 2
 High Pressure Pump Flow Rate: 4gpm (15.1 lpm)
 High Pressure Pump: 4,000psi (275.8 bar)
 High Pressure Hose Length: 50' (15m)
 Low Water Shut Off: Yes

SPOIL TANK:

Spoil Tank Capacity: 500gal (1,893L) (573 Model)
 Spoil Tank Capacity: 800gal (3,028L) (873 Model)
 Door Type: Hydraulic
 Tank Lift Type: Hydraulic

VACUUM:

Type of Filters: Cartridge filter 0.5 microns
 Hose Length: 30' (9m)
 Hose Width: 3" (8cm)
 Hose Width Optional: 4" (10cm)
 Vacuum: 1,000cfm
 Water Trap Capacity: 60gal (227L)
 Suction Hose Storage: 30' (9m)

CONTROL PANEL:

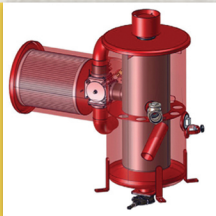
Controls: Curbside
 Gauges: Digital

OPTIONAL BOOM:

Pick up Hose: 4" (10cm)
 Reach: 15' (4.6m)
 Movement: 6-way

OPTIONAL STRONG ARM:

Reach: 15' (5m)

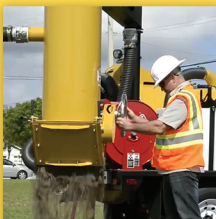
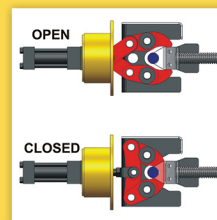


CV5 FILTRATION HOUSING:

The AIR ground level filtration housing also incorporates a 28" (71.1cm) diameter cyclone, four-way valve for reverse pressure, and the largest silencer in the industry for quiet performance. **Patented.**

7 SERIES HYDRAULIC CLAW DOOR:

No fuss, over center locking mechanism for positive lock and unlock.



OPTIONAL REMOTE DEBRIS TANK:

Optional remote debris tank catches the dry material and allows operator to quickly put the dry spoils back into the hole without moving the machine. Video available at www.vactron.com/videos.html **Patent pending.**

Vac-Tron Equipment, LLC., reserves the right to make changes in engineering, design and specifications; add improvements; or discontinue manufacturing at any time without notice. Shown is for illustrative purposes only, and may display optional accessories or components. Please contact your local Vac-Tron dealer for more information on machine specifications. Vac-Tron and the Vac-Tron logo are trademarks of Vac-Tron Equipment.
 © 2017 Vac-Tron Equipment, LLC. All Rights Reserved. Printed in the U.S.A. Please Recycle.



WWW.VACTRON.COM
 1-888-VAC-TRON