

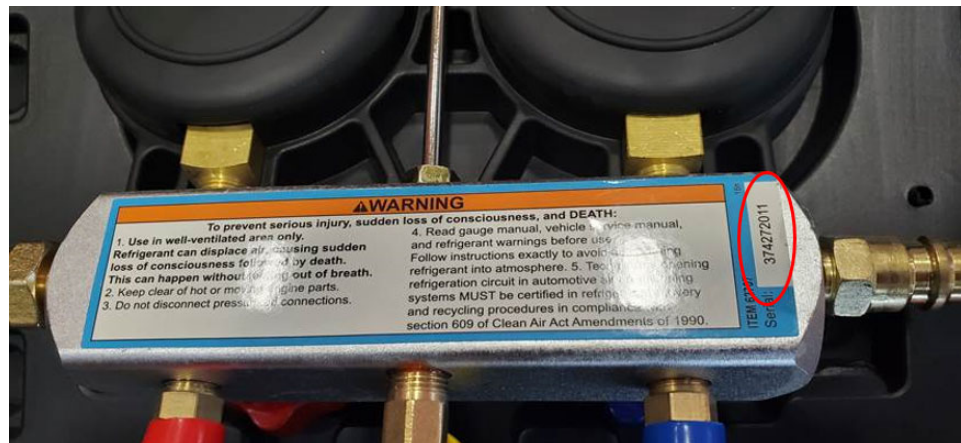
INSTRUCTIONS FOR AC MANIFOLD GAUGE SET ITEM NUMBER 62707

THIS RECALL ONLY CONCERNS AC MANIFOLD GAUGE SET ITEM NUMBER 62707.

The affected units were produced between March 23, 2020 and May 17, 2020. The AC Manifold Gauge Set item number 62707 will be identified by checking the item number found on the label on the back of each AC Manifold Gauge Set. Check the item number and ensure that it is 62707. If so, continue. If not, you do not have an item that is in-scope of the Recall.



Next, check to see if your unit, item number 62707, was produced during the recall specific timeframe by checking the serial number/ batch code located on the back of the manifold gauge.



The affected batch codes are:

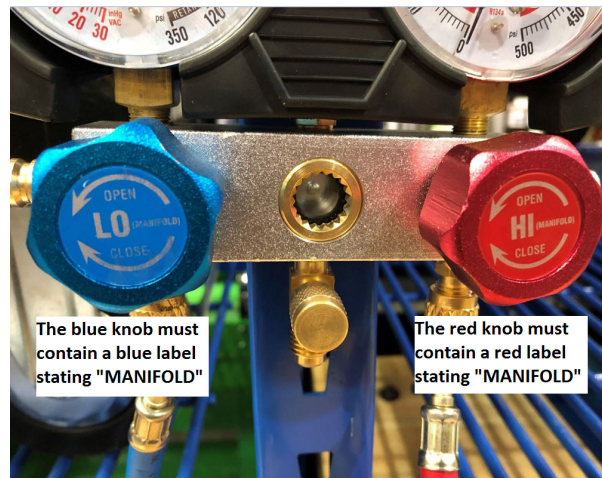
- 374272013
- 374272014
- 374272015
- 374272020

INSTRUCTIONS FOR AC MANIFOLD GAUGE SET ITEM NUMBER 62707

If you have one of these items, **STOP USING THE AC MANIFOLD GAUGE SET IMMEDIATELY.**

If the affected batch code is found, you **must** re-label the unit following this procedure:

- 1) Start by remedying the labels on your manifold. Place the blue label that states 'manifold' on the blue knob as shown below. Place the red label that states 'manifold' on the red knob as shown below:



- 2) Next, remedy the labels on your coupler. Place the blue label that states 'coupler' on the blue knob as shown below. Place the red label that states 'coupler' on the red knob shown below:



Once corrective labels have been applied, you may resume use of your AC Manifold Gauge Set. If your manifold gauge set already has labels in the correct positions you don't have to do anything and can discard the labels you received.