

SOP02432

U24RL W/H Copper Line Wheel

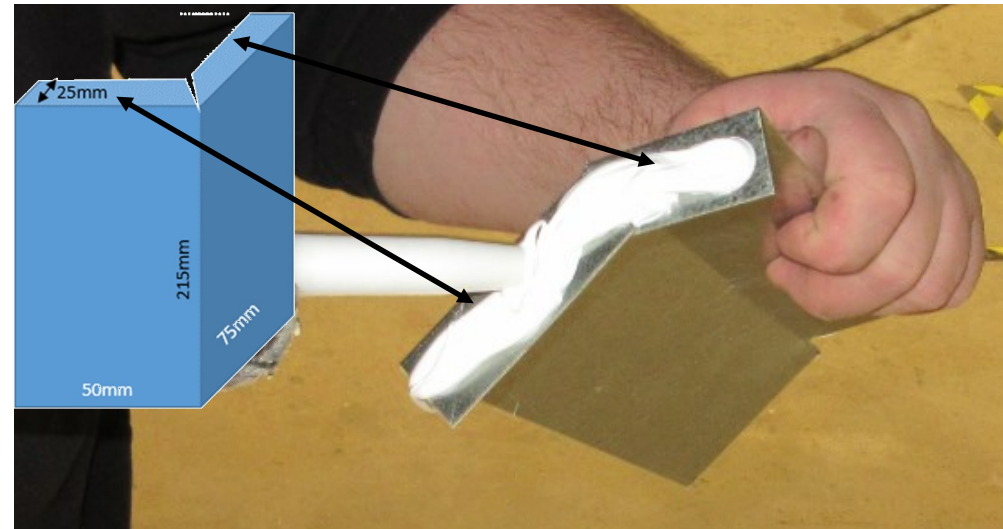
Well Shield Install. QAAR 9572

Department: Warranty/Service
 People Required: 1
 Time to Complete: 7min
 Date Created: Dec. 4, 2019
 Date Revised: Rev #:
 Created by Initial: GK806 Verified:



Locate where the water heater's copper propane line, runs through the coach floor just in front of the PS rear wheel.

1



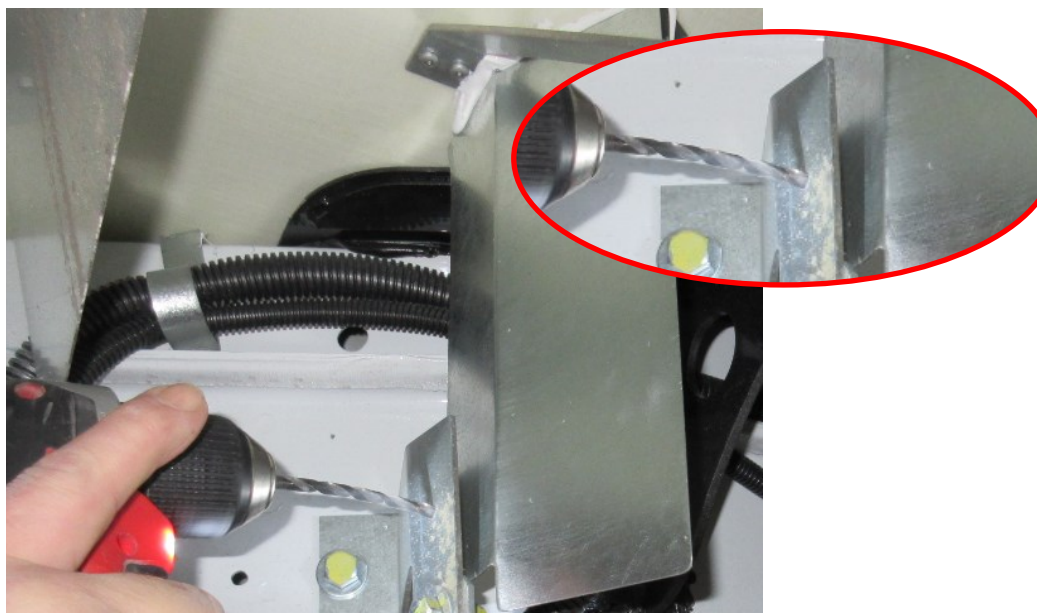
Apply white Guertin (129-1015) to the top flange of shield.

2



With the narrower side touching the front of the top muffler bracket flange; fasten each (2) shield flange to underside of floor with a #10 x 3/4" Robertson (square) Pan Head SS Screw (141-0204)

3



Drill a 9/16" hole in the top plate of the muffler bracket approximately half way up from the bolt.

4



Fasten the muffler bracket to shield with 1 #10 x 3/4" Robertson (square) Pan Head Screws (141-0204)

5

6