

**AKC1 - Re-programming Operator Control Unit in Front Center Console and Updating Software for Various Control Units (Stop Delivery/Recall Campaign)**

Important: **CRITICAL WARNING** -This campaign includes steps where control unit(s) in the vehicle will be programmed with the PIWIS Tester. The vehicle voltage must be maintained between 13.5 volts and 14.5 volts during this programming. Failure to maintain this voltage could result in damaged control unit(s). Damage caused by inadequate voltage during programming is not a warrantable defect. The technician must verify the actual vehicle voltage in the PIWIS Tester before starting the campaign and also document the actual voltage on the repair order

Model Year: **2020**

Vehicle type: **911 (992)**

- Subject:
- **Operator control unit in front center console**
  - **Battery sensor\***
  - **Selector lever control unit**
  - **Instrument cluster**
  - **Brake electronics (PSM incl. parking brake) control unit**
  - **Front axle lift system control unit\***
  - **Control unit for chassis control (PASM)**
  - **Control unit for Tire Pressure Monitoring (TPM)**

\* Depending on equipment (battery sensor will only be programmed if a Lithium starter battery (I-no. J2A) is installed.)

Information: **Due to a software error, there is a possibility that the hazard warning lights will not be activated after pressing the button in the center console in certain situations on the affected vehicles.** Failure of the hazard warning lights can result in an increased risk if the vehicle is not perceived as an obstacle.

Remedial Action: Re-program operator control unit in front center console and update software for the following control units using the PIWIS Tester with test software version **39.000.020** (or higher) installed:



**Information**

The following control units are re-programmed and then re-coded **automatically** during the campaign using **three separate programming codes**.

Control unit	Programming code
• Operator control unit in front center console	X5R1R

<ul style="list-style-type: none"> <li>• Battery sensor*</li> <li>• Selector lever control unit</li> <li>• Instrument cluster</li> <li>• Brake electronics (PSM incl. parking brake) control unit</li> <li>• Front axle lift system control unit*</li> <li>• Control unit for chassis control (PASM)</li> </ul>	V9Q8Z
<ul style="list-style-type: none"> <li>• Control unit for Tire Pressure Monitoring (TPM)</li> </ul>	T7G1A

\* Depending on equipment (battery sensor will only be programmed if a Lithium starter battery (I-no. J2A) is installed.)

The time required for **programming and coding** the control units is up to **approx. 70 minutes**, depending on equipment.

Affected Vehicles: Only vehicles assigned to the campaign (see also PCSS Vehicle Information). This campaign affects 1,928 vehicles in North America.

### Required tools



#### Information

The new 911 (992) comes with either a **lithium starter battery** (I-no. J2A) or an **AGM starter battery** (I-no. JOV, J4K) as standard.

This depends on the following:

- Country version
- Model type
- Vehicle equipment

**Lithium starter batteries** must only be charged using a **suitable battery charger** that has a current and voltage-controlled charge map.

For further information about the battery chargers to be used, see ⇒ *Workshop Manual '270689 Charging battery/vehicle electrical system'*.

Tools:

- Battery charger with a current rating of **at least 90 A** and - if required - **also** with a **current and voltage-controlled charge map** for lithium starter batteries, e.g. **VAS 5908 - Battery charger 90A**
- **9900 - PIWIS Tester 3** with PIWIS Tester software version **39.000.020** (or higher) installed

### Preparatory work

#### NOTICE

**Fault entry in the fault memory and control unit programming aborted due to low voltage.**

- Increased current draw during diagnosis or control unit programming can cause a drop in voltage, which can result in one or more fault entries and the abnormal termination of the programming process.
- ⇒ Before starting control unit programming, connect a suitable battery charger with a current rating of at least 90 A to the vehicle.

**NOTICE**

Control unit programming will be aborted if the WLAN connection is unstable.

- An unstable WiFi connection can interrupt communication between the PIWIS Tester and the vehicle communication module (VCI). As a result, control unit programming may be aborted.
- ⇒ During control unit programming, always connect the PIWIS Tester to the vehicle communication module (VCI) via the USB cable.

**NOTICE**

Control unit programming will be aborted if the driver's key is not recognized

- If the driver's key is not recognized in the vehicle, programming cannot be started or will be interrupted.
- ⇒ Place the driver's key with the back facing down in the area in front of the storage compartment under the armrest (emergency start tray) in order to guarantee a permanent radio link between the vehicle and driver's key.

**NOTICE**

Programming interrupted

- Malfunctions in control unit
  - Risk of damage to control unit
- ⇒ Route the line between the vehicle communication module (VCI) and diagnostic socket on the vehicle without tension and make sure that the connector is inserted fully into the diagnostic socket.
- ⇒ Check that the rechargeable battery for the PIWIS Tester is charged sufficiently. Connect the PIWIS Tester to the power supply unit if necessary.

**Information**

To carry out the campaign, the PIWIS Tester must be online and logged into the Porsche Partner Network (PPN).



### Information

The procedure described here is based on the PIWIS Tester 3 software version **39.000.020**.

The PIWIS Tester instructions take precedence and in the event of a discrepancy, these are the instructions that must be followed.

A discrepancy may arise with later software versions for example.

Procedure: 1 Connect a suitable battery charger, e.g. **VAS 5908 - Battery charger 90A**, to the jump-start terminals in the luggage compartment and switch it on.

2 Place the **driver's key** with the back facing down in the area in front of the storage compartment under the armrest (**emergency start tray**) in order to guarantee a permanent radio link between the vehicle and driver's key ⇒ *Emergency start tray*.



*Emergency start tray*

3 Connect the **9900 - PIWIS Tester 3** to the Vehicle Communication Module (VCI) via the **USB cable**. Then, connect the Communication Module to the vehicle and switch on the PIWIS Tester. Due to the long programming time, connect the **PIWIS Tester to the power supply during the operation**.



### Information

Use the **new** PIWIS Tester data cable for carrying out the campaign. The difference between the old ⇒ *PIWIS Tester data cable -1-* and new ⇒ *PIWIS Tester data cable -2-* data cable is shown in the illustration.

If the connection between the vehicle and PIWIS Tester is interrupted, check the data cable for the PIWIS Tester for signs of damage. If the data cable is damaged, it **must be replaced**. To do this, follow the instructions in the PPN for "Returning faulty USB cable caps" (PPN portal > Dr Ing. h.c. F. Porsche AG > Aftersales > Workshop > PIWIS > Documents).

4 Switch on the ignition.

5 On the PIWIS Tester start screen, call up the '**Diagnos**tics' application.

The vehicle type is then read out, the diagnostic application is started and the control unit selection screen is populated.



*PIWIS Tester data cable*

6 Log the PIWIS Tester into the PPN.

**Re-programming front operator control unit**



**WARNING**

**Electrically moved side windows and rear spoiler**

- **Danger of limbs being trapped or severed**
  - **Risk of damage to components**
- ⇒ **Do not reach into the danger area.**
- ⇒ **Keep third parties away from the danger area.**
- ⇒ **Do not move components or tools into the danger area.**

Work Procedure: 1 The basic procedure for control unit programming is described in the Workshop Manual ⇒ *Workshop Manual '9X00IN Basic instructions and procedure for control unit programming using the PIWIS Tester'*.

**For specific information on control unit programming during this campaign, see the table below:**

Required PIWIS Tester software version:	<b>39.000.020</b> (or higher)
Type of control unit programming:	Control unit programming using the <b>"Campaign" function in the Additional menu</b> on the PIWIS Tester by entering a programming code.
Programming code:	<b>X5R1R</b>
Programming sequence:	Read and follow the <b>information and instructions on the PIWIS Tester</b> during the guided programming sequence.  <b>Do not interrupt programming and coding.</b>  A backup documentation process for the re-programmed software versions starts as soon as programming and coding is complete.
Programming time (approx):	<b>3 minutes</b>

Software version programmed during this campaign:	<b>1420</b>  Following control unit programming, the software version can be read out of the control unit for the operator control unit in front center console in the 'Extended identifications' menu using the PIWIS Tester.
Procedure in the event of abnormal termination of control unit programming:	<ul style="list-style-type: none"> <li>• Switch ignition off and then on again.</li> <li>• Read out and erase fault memories ⇒ <i>Workshop Manual '9X00IN Basic instructions and procedure for control unit programming using the PIWIS Tester'</i>.</li> <li>• Repeat control unit programming by entering the programming code again.</li> </ul>
Procedure in the event of error messages appearing during the programming sequence:	⇒ <i>Workshop Manual '9X00IN Basic instructions and procedure for control unit programming using the PIWIS Tester - section on "Fault finding"</i> .

- 2 Continue with Updating software for various control units ⇒ *Technical Information '9X00IN Updating software for various control units'*.

### Updating software for various control units



#### WARNING

#### Electrically moved side windows and rear spoiler

- Danger of limbs being trapped or severed
  - Risk of damage to components
- ⇒ Do not reach into the danger area.
- ⇒ Keep third parties away from the danger area.
- ⇒ Do not move components or tools into the danger area.



#### Information

The fan runs several times for a few seconds during the programming sequence.



**Information**

The PIWIS Tester **automatically** performs the programming sequence described below. This does not require any interaction with the PIWIS Tester.

Control units that are not installed are skipped automatically.

The time required for the update depends on the respective vehicle equipment and can be up to **65 minutes**.

The following control units are **re-programmed** and then **re-coded** in the specified sequence:

- **Battery sensor\***
- **Selector lever control unit**
- **Instrument cluster**
- **Front axle lift system control unit\***
- **Brake electronics (PSM incl. parking brake) control unit**
- **Control unit for chassis control (PASM)**

\* Depending on equipment (battery sensor will only be programmed if a Lithium starter battery (I-no. J2A) is installed.)

Work Procedure: 1 The basic procedure for control unit programming is described in the Workshop Manual ⇒ *Workshop Manual '9X00IN Basic instructions and procedure for control unit programming using the PIWIS Tester'*.

**For specific information on control unit programming during this campaign, see the table below:**

Required PIWIS Tester software version:	<b>39.000.020</b> (or higher)
Type of control unit programming:	Control unit programming using the <b>"Campaign" function in the Additional menu</b> on the PIWIS Tester by entering a programming code.
Programming code:	<b>V9Q8Z</b>
Programming sequence:	Read and follow the <b>information and instructions on the PIWIS Tester</b> during the guided programming sequence.  <b>Do not interrupt programming and coding.</b>  A backup documentation process for the re-programmed software versions starts as soon as programming and coding is complete.

Programming time (approx):	<b>up to 70 minutes*</b> * The time required for the update depends on the respective vehicle equipment.
Software versions programmed during this campaign:	• Battery sensor 0152
	• Selector lever control unit 0240
	• Instrument cluster 0206
	Following control unit programming, the software version can be read out of the relevant control unit in the 'Extended identifications' menu using the PIWIS Tester.
Procedure in the event of abnormal termination of control unit programming:	<ul style="list-style-type: none"> <li>• Switch ignition off and then on again.</li> <li>• Read out and erase fault memories ⇒ <i>Workshop Manual '9X00IN Basic instructions and procedure for control unit programming using the PIWIS Tester'</i>.</li> <li>• Repeat control unit programming by entering the programming code again.</li> </ul>
Procedure in the event of error messages appearing during the programming sequence:	⇒ <i>Workshop Manual '9X00IN Basic instructions and procedure for control unit programming using the PIWIS Tester - section on "Fault finding"</i> .

- 2 Continue with Re-programming control unit for Tire Pressure Monitoring (TPM) ⇒ *Technical Information '9X00IN Re-programming control unit for Tyre Pressure Monitoring (TPM)'*.

### Re-programming control unit for Tire Pressure Monitoring (TPM)



#### WARNING

#### Electrically moved side windows and rear spoiler

- Danger of limbs being trapped or severed
  - Risk of damage to components
- ⇒ Do not reach into the danger area.
- ⇒ Keep third parties away from the danger area.
- ⇒ Do not move components or tools into the danger area.

Procedure: 1 The basic procedure for control unit programming is described in the Workshop Manual ⇒ *Workshop Manual '9X00IN Basic instructions and procedure for control unit programming using the PIWIS Tester'*.

**For specific information on control unit programming during this campaign, see the table below:**



Required PIWIS Tester software version:	<b>39.000.020</b> (or higher)
Type of control unit programming:	Control unit programming using the <b>"Campaign" function in the Additional menu</b> on the PIWIS Tester by entering a programming code.
Programming code:	<b>T7G1A</b>
Programming sequence:	Read and follow the <b>information and instructions on the PIWIS Tester</b> during the guided programming sequence.  <b>Do not interrupt programming and coding.</b>  A backup documentation process for the re-programmed software versions starts as soon as programming and coding is complete.
Programming time (approx):	<b>2 minutes</b>
Software version programmed during this campaign:	0220  Following control unit programming, the software version can be read out from the control unit for Tire Pressure Monitoring (TPM) in the ⇒ 'Extended identification' menu using the PIWIS Tester.
Procedure in the event of abnormal termination of control unit programming:	<ul style="list-style-type: none"> <li>• Switch ignition off and then on again.</li> <li>• Read out and erase fault memories ⇒ <i>Workshop Manual '9X00IN Basic instructions and procedure for control unit programming using the PIWIS Tester'</i>.</li> <li>• Repeat control unit programming by entering the programming code again.</li> </ul>
Procedure in the event of error messages appearing during the programming sequence:	⇒ <i>Workshop Manual '9X00IN Basic instructions and procedure for control unit programming using the PIWIS Tester - section on "Fault finding"</i> .

**Concluding work**

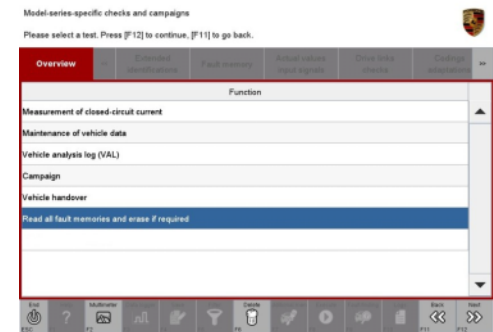


**WARNING**

**Electrically moved rear spoiler**

- **Danger of limbs being trapped or severed**
  - **Risk of damage to components**
- ⇒ **Do not reach into the danger area.**
- ⇒ **Keep third parties away from the danger area.**
- ⇒ **Do not move components or tools into the danger area.**

- Procedure: 1 Read out and erase the fault memories of all control units.
- 1.1 Press •F7" in the control unit selection screen ('Overview' menu) to call up the Additional menu.
  - 1.2 Select the function "Read all fault memories and erase if required" and press •F12" ('Next') to confirm your selection ⇒ *Erasing fault memories*.
- The fault memories of the control units are read out.
- 1.3 Once you have read out the fault memories, check the fault memory entries.



*Erasing fault memories*



#### Information

If control units are found to have faults that are **not** caused by control unit programming, these must first be **found** and **corrected**. This work **cannot** be invoiced under the workshop campaign number.

- 1.4 Press •F8" to delete fault memory entries.
- 1.5 Press •F12" ('Yes') in response to the question as to whether you really want to delete all fault memory entries.

The faults stored in the fault memories of the various control units are deleted.

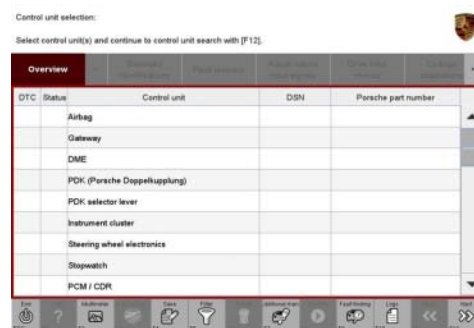


#### Information

If fault memory entries for individual control units cannot be deleted, proceed as follows:

- Switch off the ignition.
- Disconnect the PIWIS Tester diagnostic connector from the diagnostic socket.
- Lock the vehicle using the driver's key.
- Wait approx. 1 minute before unlocking the vehicle again.
- Start the engine, leave it running for a short time and then stop it again.
- Switch off the ignition and wait approx. 10 seconds before switching it back on again.
- Plug the PIWIS Tester diagnostic connector into the diagnostic socket again and restore communication with the vehicle.
- Read out the fault memory again and delete any fault memory entries that are stored.

- 1.6 Once you have erased the fault memories, select the **'Overview'** menu to return to the control unit selection screen ⇒ *Control unit selection*.
- 2 Manually retract the rear spoiler that was extended automatically during programming. For this purpose, select the menu **'CAR' – 'DRIVE'** in the PCM, then select the **'Spoiler'** function and **press and hold** the spoiler button until the rear spoiler is **fully retracted**.
- 3 Switch off the ignition.
- 4 Disconnect the PIWIS Tester from the vehicle.
- 5 Switch off and disconnect the battery charger.
- 6 Enter the campaign in the Warranty and Maintenance booklet.



*Control unit selection*

**Warranty processing**

Scope 1:

<p><b>Working time:</b></p> <p>Re-programming operator control unit in front center console and updating software for various control units</p> <p>Includes:</p> <ul style="list-style-type: none"> <li>Connecting and disconnecting battery charger</li> <li>Connecting and disconnecting PIWIS Tester</li> <li>Re-programming operator control unit in front center console</li> <li>Re-programming instrument cluster</li> <li>Re-programming selector lever control unit</li> <li>Re-programming battery sensor</li> <li>Re-coding front axle lift system control unit</li> <li>Re-coding control unit for chassis control (PASM)</li> <li>Re-coding brake electronics (PSM incl. parking brake) control unit</li> <li>Re-programming control unit for Tire Pressure Monitoring (TPM)</li> <li>Teaching wheel electronics</li> </ul>	<p><b>Labor time: 83 TU</b></p>
--	---------------------------------

Reading out and erasing fault memories

⇒ **Damage Code AKC1 099 000 1**

**Important Notice:** Technical Bulletins issued by Porsche Cars North America, Inc. are intended only for use by professional automotive technicians who have attended Porsche service training courses. They are written to inform those technicians of conditions that may occur on some Porsche vehicles, or to provide information that could assist in the proper servicing of a vehicle. Porsche special tools may be necessary in order to perform certain operations identified in these bulletins. Use of tools and procedures other than those Porsche recommends in these bulletins may be detrimental to the safe operation of your vehicle, and may endanger the people working on it. Properly trained Porsche technicians have the equipment, tools, safety instructions, and know-how to do the job properly and safely. Part numbers listed in these bulletins are for reference only. The work procedures updated electronically in the Porsche PIWIS diagnostic and testing device take precedence and, in the event of a discrepancy, the work procedures in the PIWIS Tester are the ones that must be followed.

© 2020 Porsche Cars North America, Inc.