



## INSTRUCTIONS TO PERFORM RECALL CAMPAIGN 160 (Residential Refrigerator)

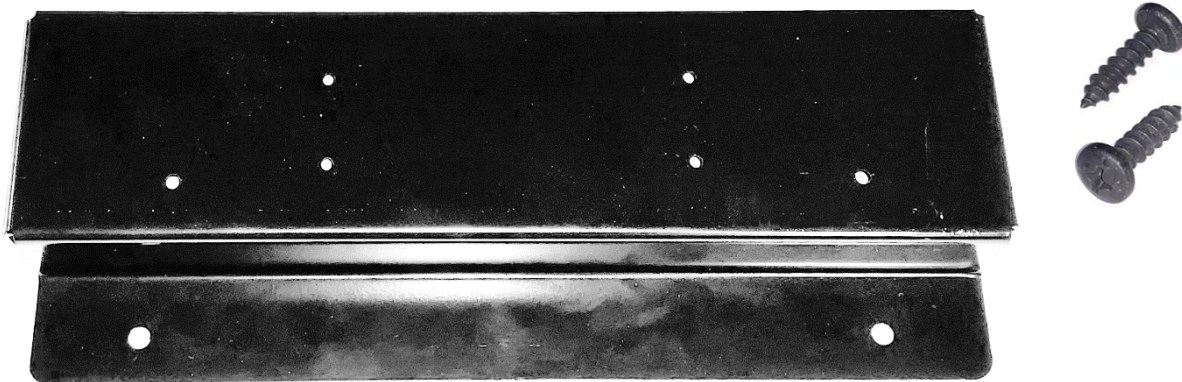
---

<b><u>Models Affected</u></b>	2017	Winnebago Vista	Itasca Sunstar	
	2018	Winnebago Vista	Itasca Sunstar	
	2019	Winnebago Vista	Itasca Sunstar	Winnebago Adventurer
	2020			Winnebago Adventurer

## INSTRUCTIONS TO PERFORM RECALL CAMPAIGN 160 FOR RESIDENTIAL REFRIGERATOR APPLICATIONS

<b><u>Tools and Parts Required</u></b>	Cardboard – or – similar material for floor protection
	Screw Gun
	Bit Holder Extensions
	3/8" magnetic socket driver bit
	#2 Philips bit
	Brad nailer – or – hammer
	1 ½" Brad nails
	Recall Repair Kit # RC 7645-20-760

NOTE: Only use the parts supplied in the recall kit to complete this repair.



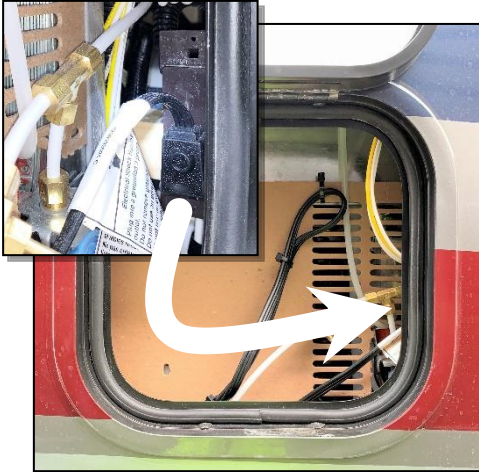


## INSTRUCTIONS TO PERFORM RECALL CAMPAIGN 160 (Residential Refrigerator)

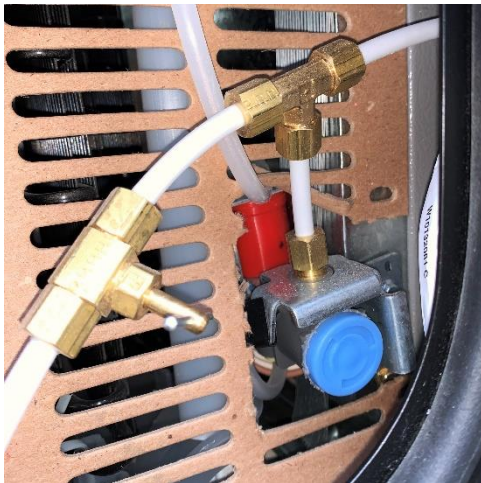
### Unit Prep

- Locate the refrigerator access door found on the coach exterior right sidewall.

- Inside the access door
  - o Unplug the refrigerator



- o Disconnect the icemaker line ensuring the valve is in the closed position.



- Locate the refrigerator inside the coach

- Lay down material such as cardboard to protect the floor covering



- Ensure the refrigerator door travel latch is engaged





## INSTRUCTIONS TO PERFORM RECALL CAMPAIGN 160 (Residential Refrigerator)

### Component Removal

- Remove the trim pieces above and below the refrigerator. Be careful of the nails sticking out from the trim. Using pliers, remove the nails and discard. Place these trim pieces to the side for later use.



- Remove the metal bracket and 8 screws which secures the refrigerator to the cabinet. Place the screws and bracket to the side for later use.



- Locate the top brackets which secures the refrigerator to the sidewall.



- Using the bit extensions and the 3/8" magnetic socket driver bit. Remove the 4 fasteners, retaining and setting off to the side for later use.





## INSTRUCTIONS TO PERFORM RECALL CAMPAIGN 160 (Residential Refrigerator)

- Remove the refrigerator
  - This step will require more than one person. Practice safe lifting techniques when maneuvering the refrigerator out of the opening and on to the floor.



- Be aware of the potential for damage to the refrigerator cabinet face frame and use safeguards to prevent damage from happening.



- Remove the refrigerator cabinet floor.



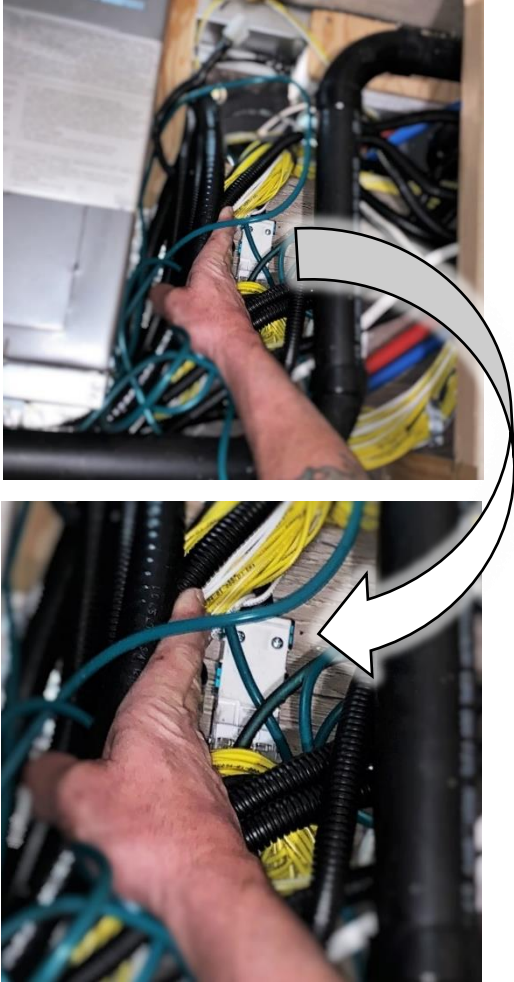
- Retain the floor pieces and screws, setting aside for later use.



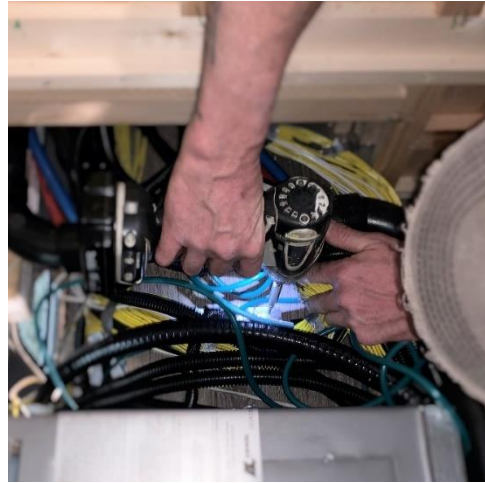


## INSTRUCTIONS TO PERFORM RECALL CAMPAIGN 160 (Residential Refrigerator)

- Locate the Electrical connector which is installed to the rear of the furnace and fastened to the floor.



- Detach the electrical connector from the floor by taking out the four screws which pass through the connector body.
- Remove clamps holding the wire at each end of the connector.
- Retain and set aside the connector screws, clamps, and clamp screws.

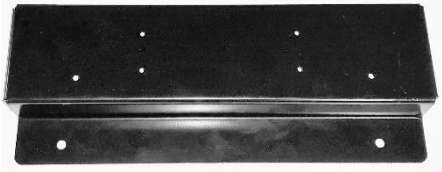




## INSTRUCTIONS TO PERFORM RECALL CAMPAIGN 160 (Residential Refrigerator)

### Recall Remedy

- Obtain the standoff bracket and familiarize yourself with the orientation, attachment method, and predrilled mounting holes for the electrical connector and wire clamps.



- In the same location where the electrical connector was detached, place the standoff bracket and ensure the correct orientation for attachment.



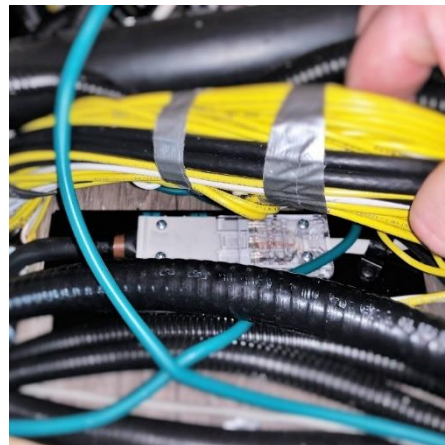
- Using the #8 screws supplied in Recall Repair Kit attach the bracket to the floor.



- Line up the attachment holes of the connector with the predrilled holes found on the bracket.



- Using screws removed from the connector earlier, attach the connector to the bracket.
- Using the clamps and screws removed earlier, place the clamps so they align with the predrilled holes and reattach with the screws.

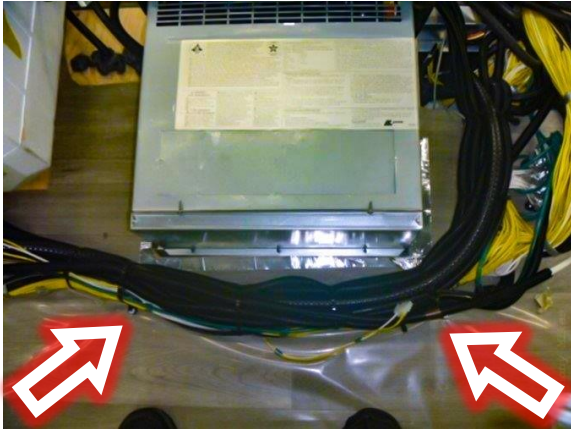




## INSTRUCTIONS TO PERFORM RECALL CAMPAIGN 160 (Residential Refrigerator)

### Component Reinstall

- Through the remedy process, many components will be moved around. **Components cannot contact the furnace enclosure.** Using the wire ties and screws provided in the recall kit, secure all items away from the furnace.



- Reinstall the refrigerator cabinet floor using the floor pieces and screws set aside earlier.



- Reinstall the refrigerator
  - o This step will require more than one person. Practice safe lifting techniques when maneuvering the refrigerator from the floor and into the opening.



- o Be aware of the potential for damage to the refrigerator cabinet face frame and use safeguards to prevent damage from happening.







## INSTRUCTIONS TO PERFORM RECALL CAMPAIGN 160 (Residential Refrigerator)

- Using the bit extensions and the 3/8" magnetic socket driver bit. Reinstall the 4 fasteners set aside earlier into the existing holes.



- Align the top brackets with the holes previously used for attachment.



- Using the flat bracket and 8 fasteners set aside earlier, align and reinstall the bracket securing the refrigerator bottom to the refrigerator cabinet.

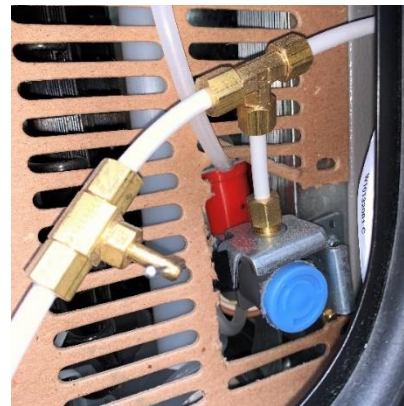


- Reinstall the trim pieces removed and set aside earlier using 1 1/2" brad nails and the brad nailer or

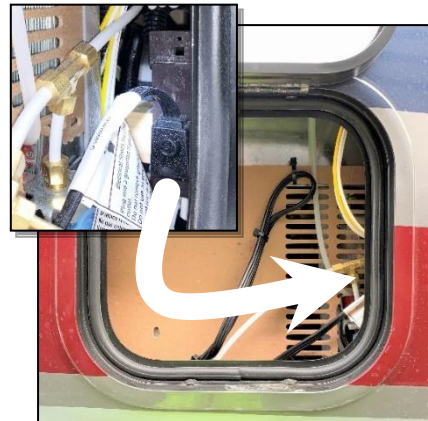


hammer.

- Inspect the work area and cabinet to ensure damage is not present.
- Locate the access door found on the right sidewall outside of the coach.
  - o Reconnect the icemaker line.



- o Plugin the refrigerator







## INSTRUCTIONS TO PERFORM RECALL CAMPAIGN 160 (Residential Refrigerator)

---

### Test

- Since the icemaker line was disconnected, testing of the water distribution system will be necessary.
  - o Follow the established water system test checking the system for leaks.
  - o If necessary, winterize the coach.
    - If you are not familiar with the test or winterization process, please contact:

Technical Assistance

1-866-653-4329