



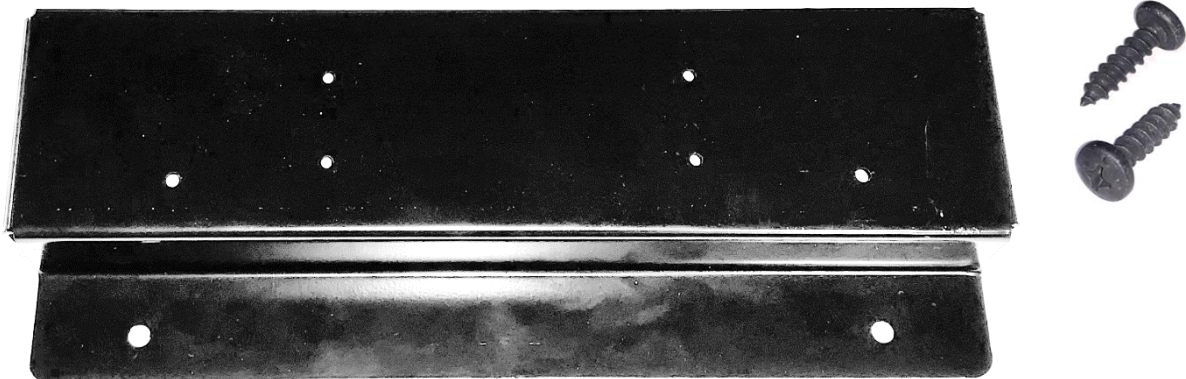
INSTRUCTIONS TO PERFORM RECALL CAMPAIGN 160 (LP Refrigerator)

<u>Models Affected</u>	2017	Winnebago Vista	Itasca Sunstar	
	2018	Winnebago Vista	Itasca Sunstar	
	2019	Winnebago Vista	Itasca Sunstar	Winnebago Adventurer
	2020			Winnebago Adventurer

INSTRUCTIONS TO PERFORM RECALL CAMPAIGN 160 FOR LP REFRIGERATOR APPLICATIONS

<u>Tools and Parts Required</u>	Cardboard – or – similar material for floor protection
	Screw Gun
	Bit Holder Extensions
	#2 Philips bit
	½" Wrench
	Recall Repair Kit # RC 7645-20-760

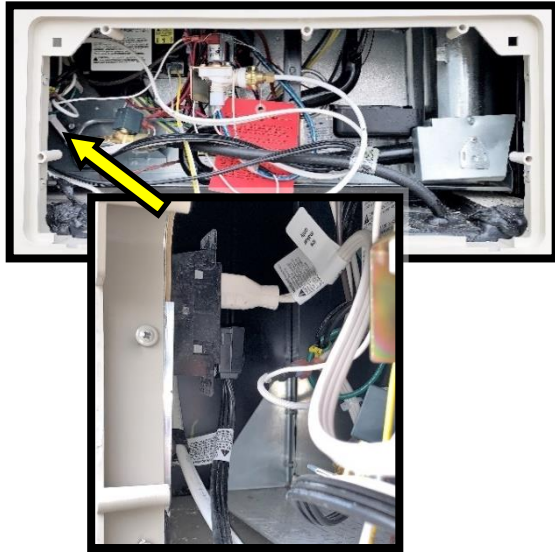
NOTE: Only use the parts supplied in the recall kit to complete this repair.



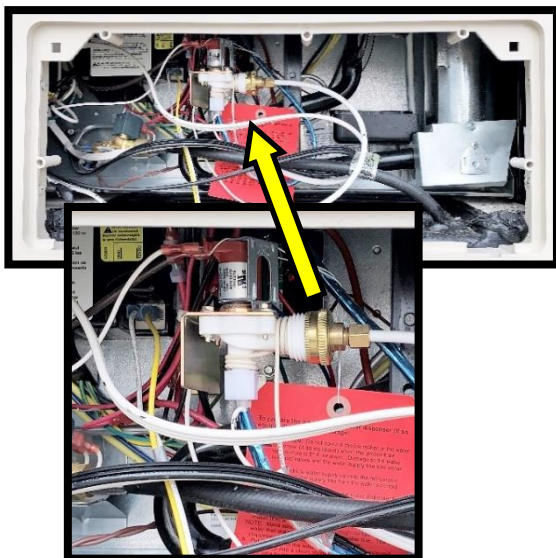
INSTRUCTIONS TO PERFORM RECALL CAMPAIGN 160 (LP Refrigerator)

Unit Prep

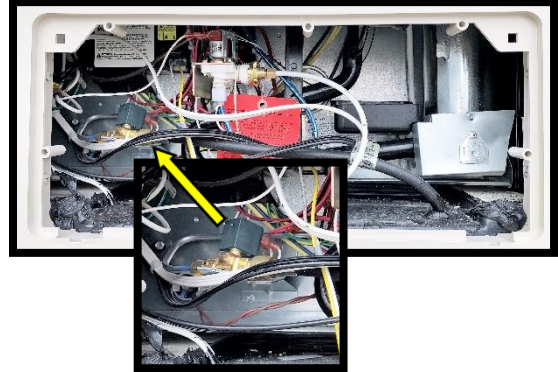
- Turn off the LP supply before proceeding to the following steps.
- Locate the refrigerator access door found on the coach exterior right sidewall.
- Inside the access door
 - o Unplug the refrigerator



- o Disconnect the icemaker line.



- o Disconnect the LP line.



- Locate the refrigerator inside the coach
- Lay down material such as cardboard to protect the floor covering

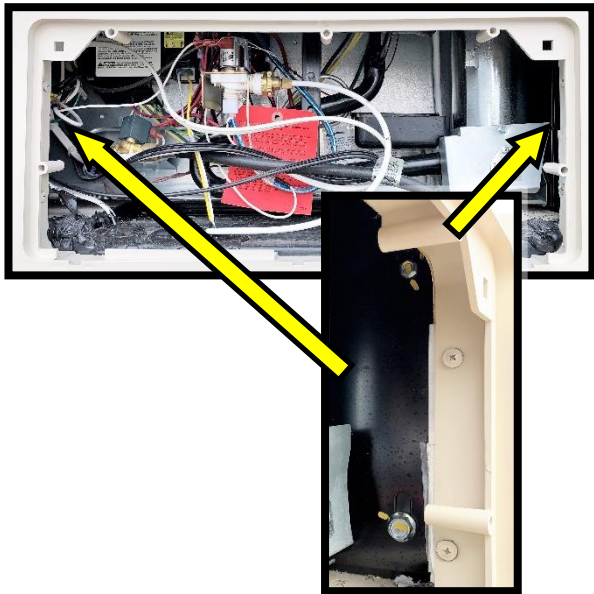


- Ensure the refrigerator doors are latched, preventing them from opening

INSTRUCTIONS TO PERFORM RECALL CAMPAIGN 160 (LP Refrigerator)

Component Removal

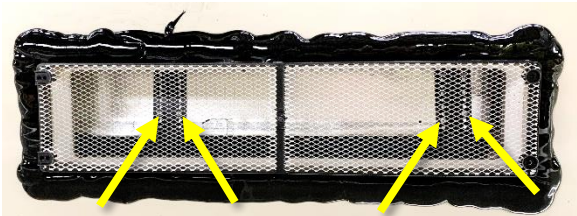
- Through the exterior access, remove fasteners located at brackets to the front and rear. Retain and set these fasteners aside for later use.



- Remove the vent cover located above the refrigerator on the roof. Retain the cover and four screws for later use.



- Through the vent expanded metal, gain access to the screws which attach the two brackets to the refrigerator.



- Remove the screws which attach the bracket to the refrigerator. Retain the screws for later use.

- From inside the coach remove the fasteners securing the refrigerator.



- o These fasteners are located along the top and bottom.
- o The refrigerator doors will need to be open for access.
- o Retain the trim pieces, fasteners and screw covers for later use.





INSTRUCTIONS TO PERFORM RECALL CAMPAIGN 160 (LP Refrigerator)

- Remove the refrigerator
 - This step will require more than one person. Practice safe lifting techniques when maneuvering the refrigerator out of the opening and on to the floor.



- Be aware of the potential for damage to the refrigerator cabinet face frame and use safeguards to prevent damage from happening.

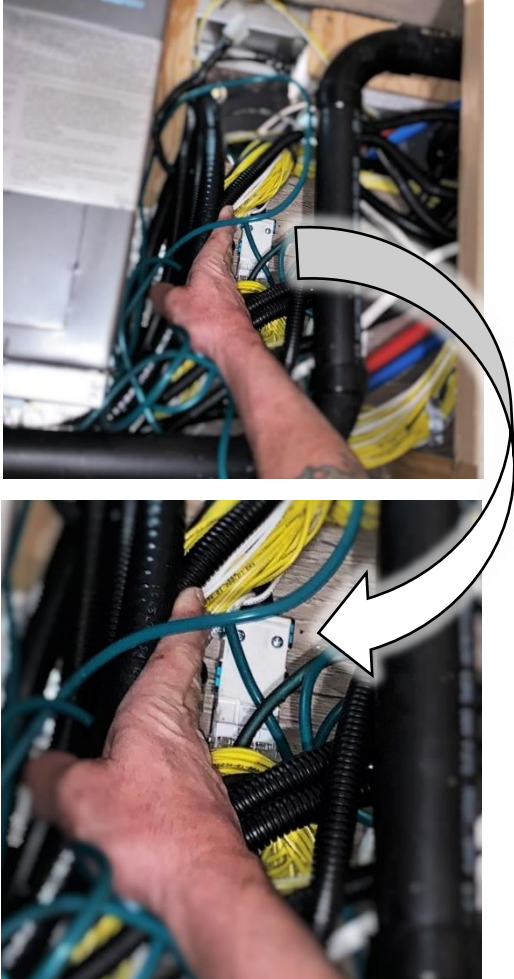
- Remove the refrigerator cabinet floor.



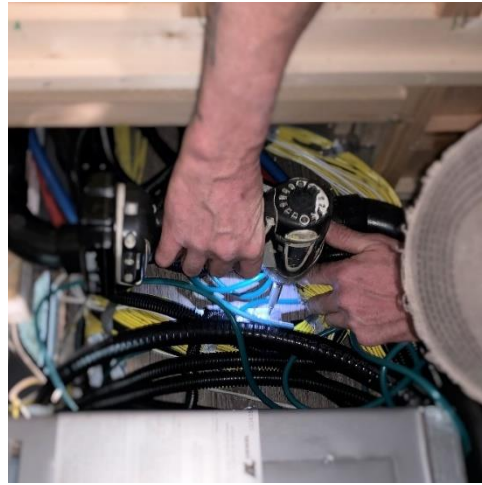
- Retain the floor pieces and screws, setting aside for later use.

INSTRUCTIONS TO PERFORM RECALL CAMPAIGN 160 (LP Refrigerator)

- Locate the Electrical connector which is installed to the rear of the furnace and fastened to the floor.



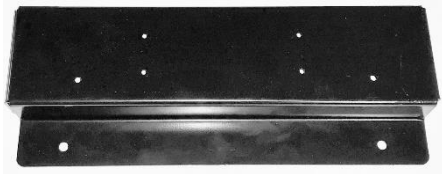
- Detach the electrical connector from the floor by taking out the four screws which pass through the connector body.
- Remove clamps holding the wire at each end of the connector.
- Retain and set aside the connector screws, clamps, and clamp screws.



INSTRUCTIONS TO PERFORM RECALL CAMPAIGN 160 (LP Refrigerator)

Recall Remedy

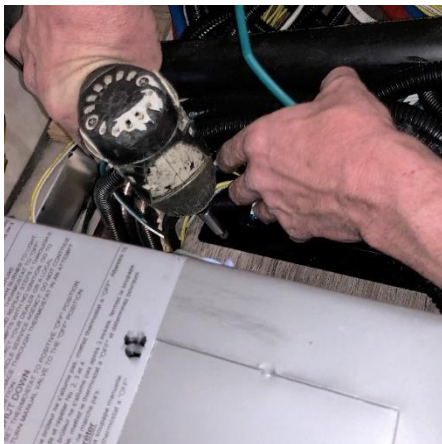
- Obtain the standoff bracket and familiarize yourself with the orientation, attachment method, and predrilled mounting holes for the electrical connector and wire clamps.



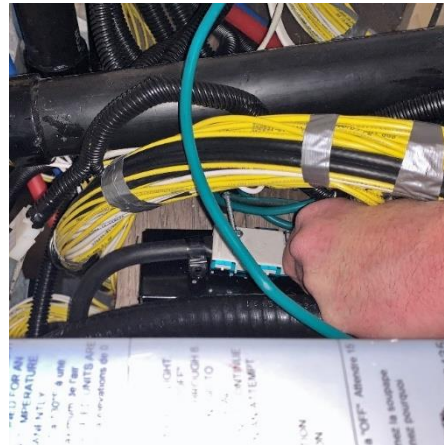
- In the same location where the electrical connector was detached, place the standoff bracket and ensure the correct orientation for attachment.



- Using the #8 screws supplied in Recall Repair Kit attach the bracket to the floor.

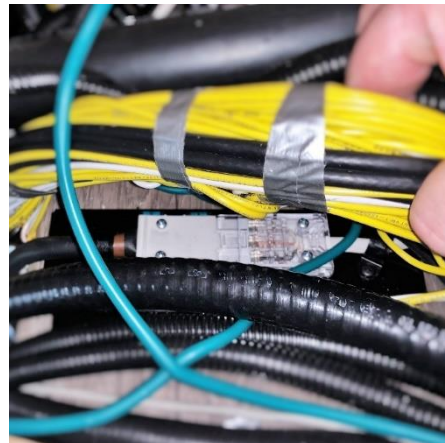


- Line up the attachment holes of the connector with the predrilled holes found on the bracket.



- Using screws removed from the connector earlier, attach the connector to the bracket.

- Using the clamps and screws removed earlier, place the clamps so they align with the predrilled holes and reattach with the screws.

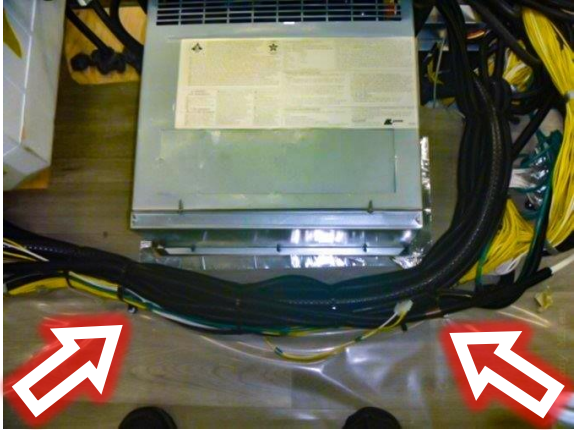


WINNEBAGO

INSTRUCTIONS TO PERFORM RECALL CAMPAIGN 160 (LP Refrigerator)

Component Reinstall

- Through the remedy process, many components will be moved around. **Components cannot contact the furnace enclosure.** Using the wire ties and screws provided in the recall kit, secure all items away from the furnace.



- Reinstall the refrigerator cabinet floor using the floor pieces and screws set aside earlier.



- Reinstall the refrigerator
 - o This step will require more than one person. Practice safe lifting techniques when maneuvering the refrigerator from the floor and into the opening.



- o Be aware of the potential for damage to the refrigerator cabinet face frame and use safeguards to prevent damage from happening.

INSTRUCTIONS TO PERFORM RECALL CAMPAIGN 160 (LP Refrigerator)

- From inside the coach reinstall the trim pieces and fasteners retained earlier securing the refrigerator to the cabinet.

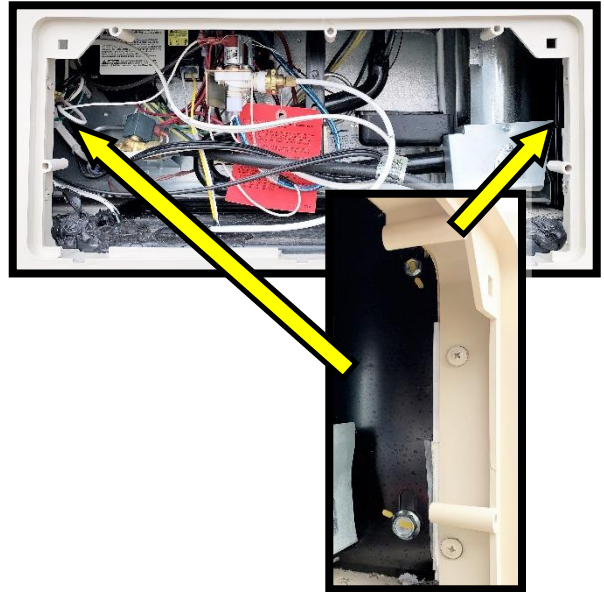


- o These fasteners are located along the top and bottom.
- o The refrigerator doors will need to be open for access.

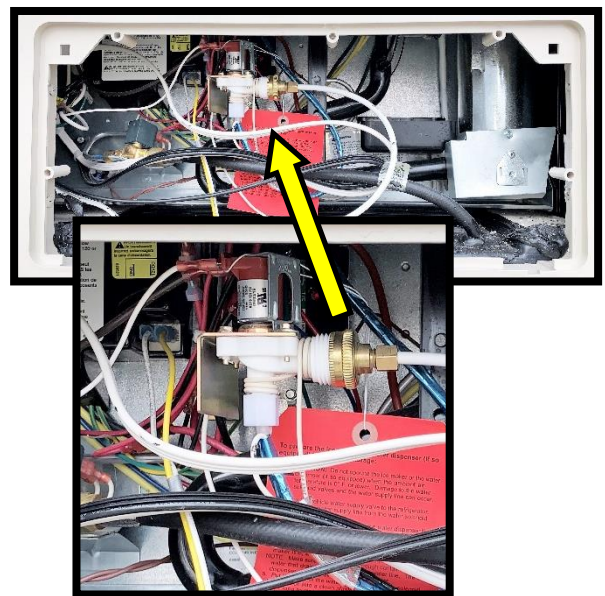
Reinstall the screw covers.



- Through the exterior access, reinstall fasteners removed earlier which are located at brackets to the front and rear. Retorque these fasteners to 27 N-M (20 ft lb)



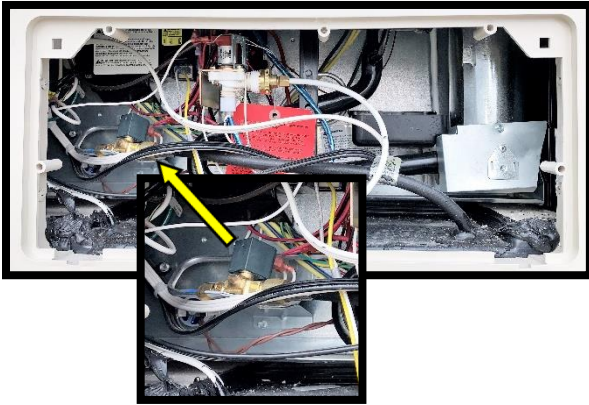
- Reconnect the icemaker line



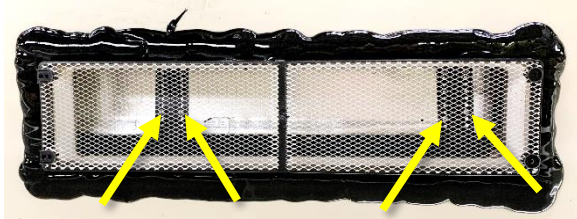
WINNEBAGO

INSTRUCTIONS TO PERFORM RECALL CAMPAIGN 160 (LP Refrigerator)

- Reconnect the LP line



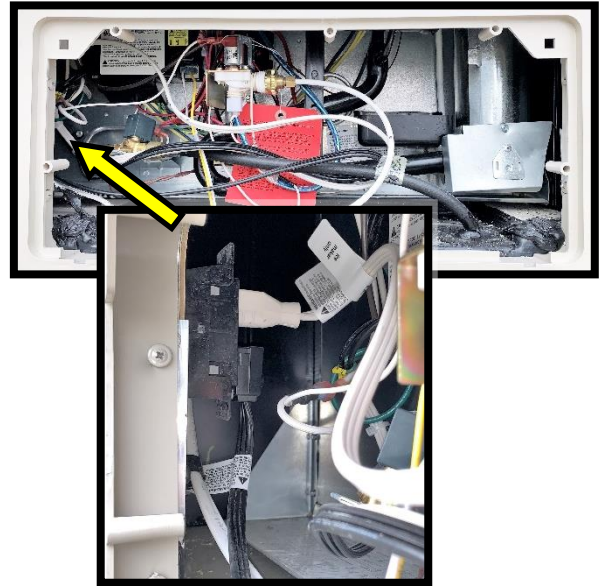
- Above the refrigerator, on the roof:
Through the vent expanded metal, gain access to the two brackets used to secure the refrigerator.
- Reinstall the screws retained earlier attaching the brackets to the refrigerator.



- Before the next step, ensure the expanded metal is properly positioned.
- Reinstall the vent cover using the screws retained earlier.



- Plug in the icemaker and the refrigerator





INSTRUCTIONS TO PERFORM RECALL CAMPAIGN 160 (LP Refrigerator)

Test

- Since the icemaker water line and the LP line were disconnected, testing of the water distribution system and LP System will be necessary.
 - o Follow the established water system and LP system tests checking the system for leaks.
 - o If necessary, winterize the coach.
 - If you are not familiar with the test or winterization process, please contact:
Technical Assistance
1-866-653-4329