



RECALL CAMPAIGN BULLETIN

Classification: BR19-006a	Reference: NTB19-104a	Date: November 22, 2019
------------------------------	--------------------------	----------------------------

VOLUNTARY SAFETY RECALL CAMPAIGN FLEET AND NEW INVENTORY 2016-2018 MAXIMA, 2015-2018 MURANO AND 2017-2019 PATHFINDER; ABS ACTUATOR

This bulletin has been amended. See **AMENDMENT HISTORY** on the last page.
Please discard previous versions of this bulletin.

CAMPAIGN ID #: R1920
APPLIED VEHICLES: 2016-2018 Maxima (A36)
2015-2018 Murano (Z52)
2017-2019 Pathfinder (R52)

**Check Service COMM or Dealer Business Systems (DBS)
National Service History to confirm campaign eligibility.**

INTRODUCTION

Nissan is conducting this voluntary safety recall campaign on certain specific model year 2016-2018 Maxima, 2015-2018 Murano and 2017-2019 Pathfinder that are in fleet or new inventory to replace the ABS Actuator and Electric Unit (ABS control unit). This service will be performed at no charge to the customer for parts or labor.

IDENTIFICATION NUMBER

Nissan has assigned identification number R1920 to this campaign. This number must appear on all communication and documentation of any nature dealing with this campaign.

DEALER RESPONSIBILITY

It is the dealer's responsibility to check Service COMM or Dealer Business Systems (DBS) National Service History for the campaign status on each vehicle falling within the range of this voluntary safety recall which for any reason enters the service department. This includes vehicles purchased from private parties or presented by transient (tourist) owners and vehicles in a dealer's inventory. **Federal law requires that new vehicles in dealer inventory which are the subject of a safety recall must be corrected prior to sale. Failure to do so can result in civil penalties by the National Highway Traffic Safety Administration.** While federal law applies only to new vehicles, Nissan strongly encourages dealers to correct any used vehicles in their inventory before they are retailed.

Nissan Bulletins are intended for use by qualified technicians, not 'do-it-yourselfers'. Qualified technicians are properly trained individuals who have the equipment, tools, safety instruction, and know-how to do a job properly and safely. **NOTE:** If you believe that a described condition may apply to a particular vehicle, DO NOT assume that it does. See your Nissan dealer to determine if this applies to your vehicle.

NOTICE If the ABS light is on and there is a delay for receiving parts or completing the repair, park the vehicle outside and away from other vehicles and structures, disconnect the vehicle's 12 volt battery and leave it disconnected while the vehicle is parked waiting for service.

SERVICE PROCEDURE

1. Replace the ABS Actuator and Electric Unit (ABS control unit).
 - Refer to the ESM: **BRAKES > BRAKE CONTROL SYSTEM > WITH ICC (OR WITHOUT ICC) > REMOVAL AND INSTALLATION > ABS ACTUATOR AND ELECTRIC UNIT (CONTROL UNIT).**
 - Follow all instructions in the ESM for ABS Control Unit replacement.

IMPORTANT: Make sure that **ADJUSTMENT OF STEERING ANGLE SENSOR NEUTRAL POSITION** and **CALIBRATION OF DECEL G SENSOR** are done as part of the ABS Control Unit replacement procedure (both are listed in the Installation section of the procedure in the ESM).

ABS CONTROL UNIT CONFIGURATION PROCEDURE

NOTICE Before starting, make sure of the following to prevent damage to the control unit:

- ASIST on the CONSULT PC has been synchronized (updated) to the current date.
- All CONSULT-III plus software updates have been installed.

HINT: Although the ABS Control Unit Configuration Procedure is contained in the ESM, the instructions on pages 2 through 8 contain additional detail that may be helpful.

2. Connect CONSULT-III plus to the vehicle.
3. Turn the ignition ON.
4. Open / start C-III plus.
5. Wait for the plus VI to be recognized.
 - The serial number will display when the plus VI is recognized.

6. Select **Re/programming, Configuration**.

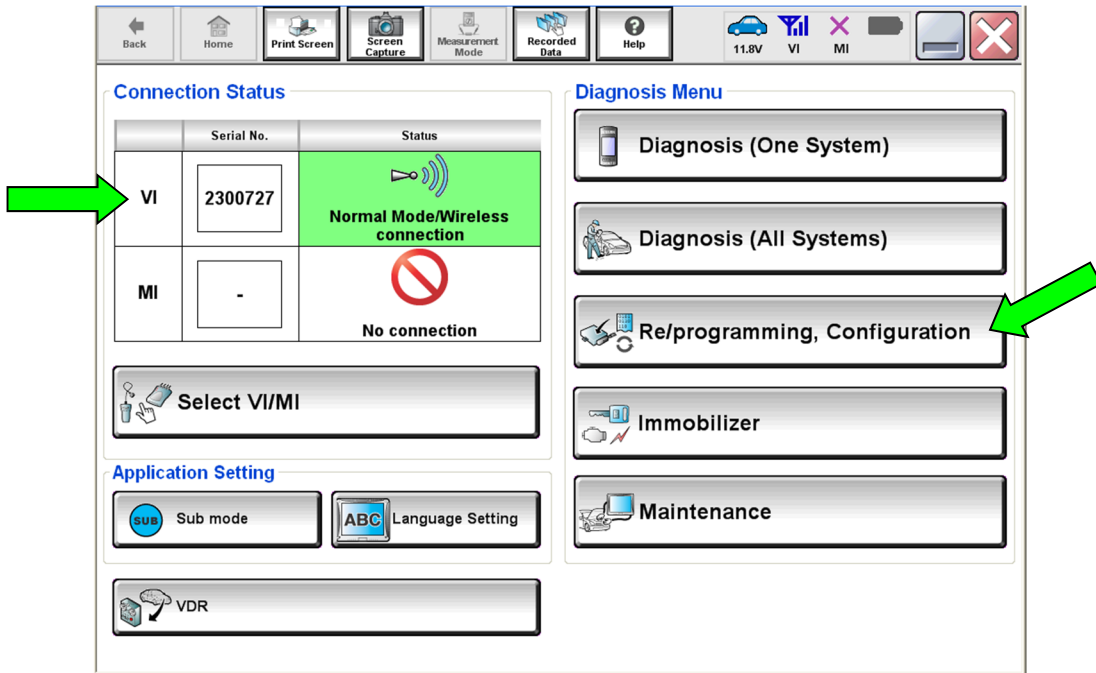


Figure 1

7. Use arrows (if needed) to view and read all precautions.
8. Check the box confirming the precautions have been read.
9. Select **Next**.

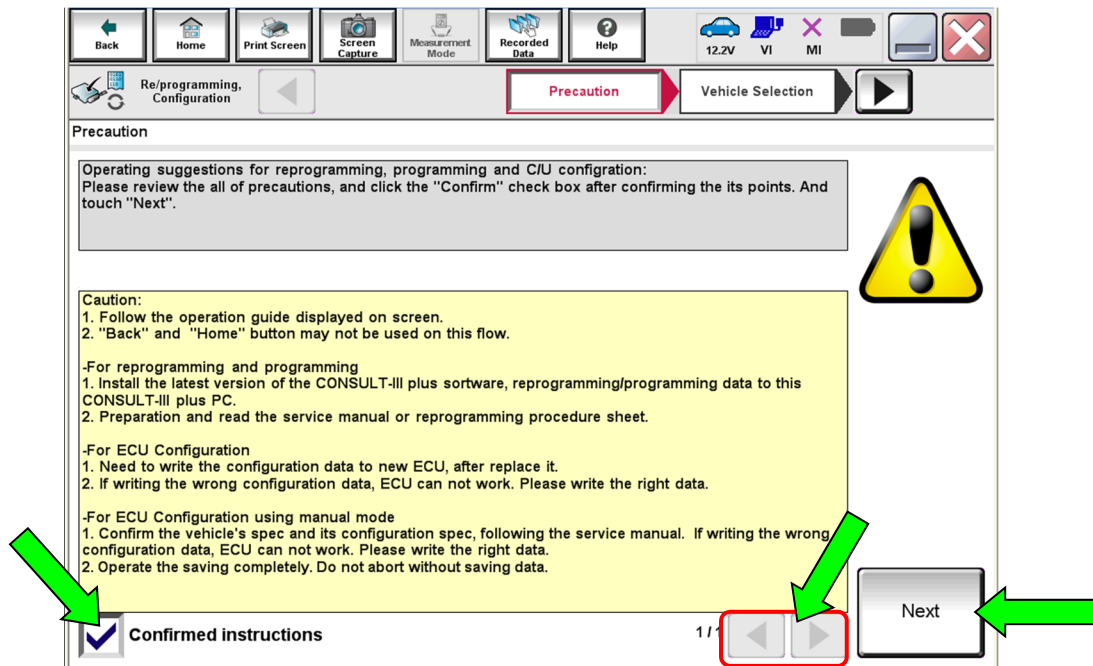


Figure 2

10. If the screen in Figure 3 displays, select **Automatic Selection(VIN)**.
 - If the screen in Figure 3 does not display, skip to step 11.

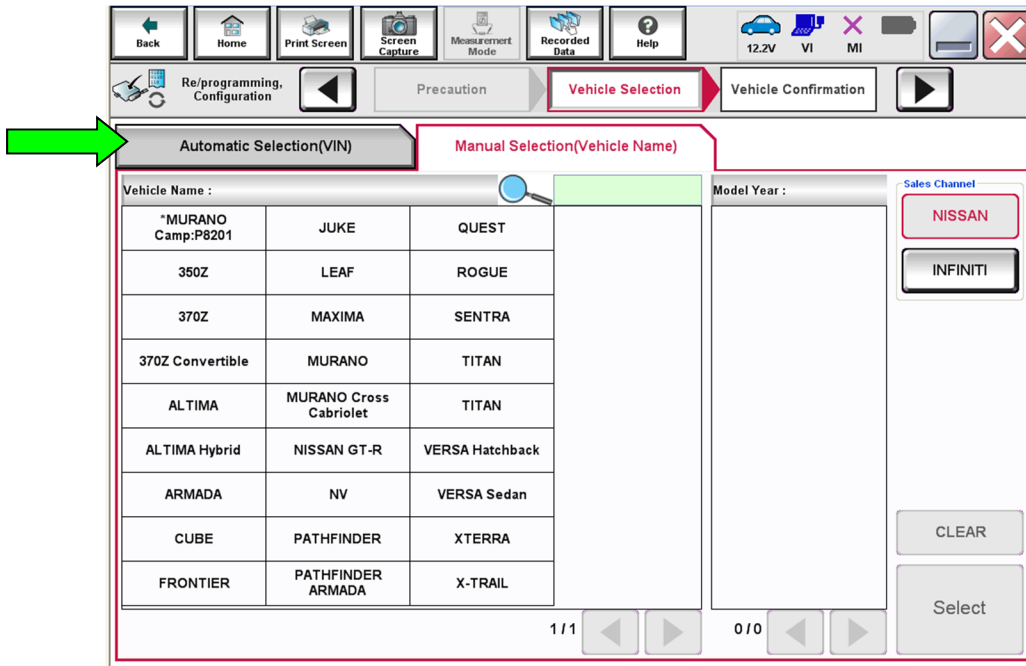


Figure 3

11. Make sure **VIN or Chassis #** matches the vehicle's VIN.
12. Select **Confirm**.

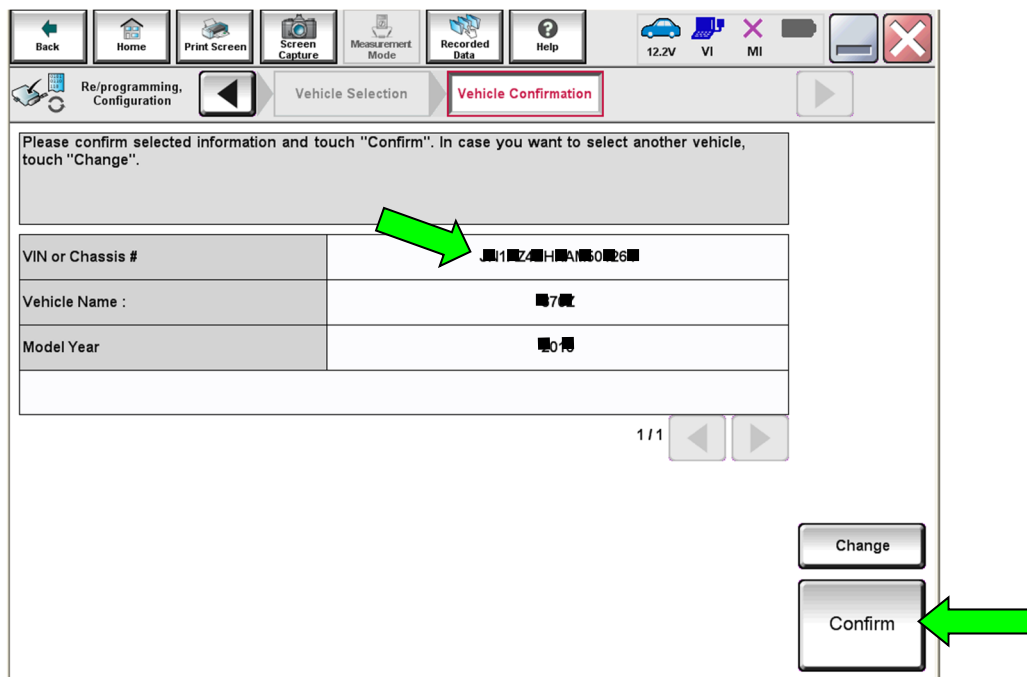


Figure 4

13. Select **Confirm**.

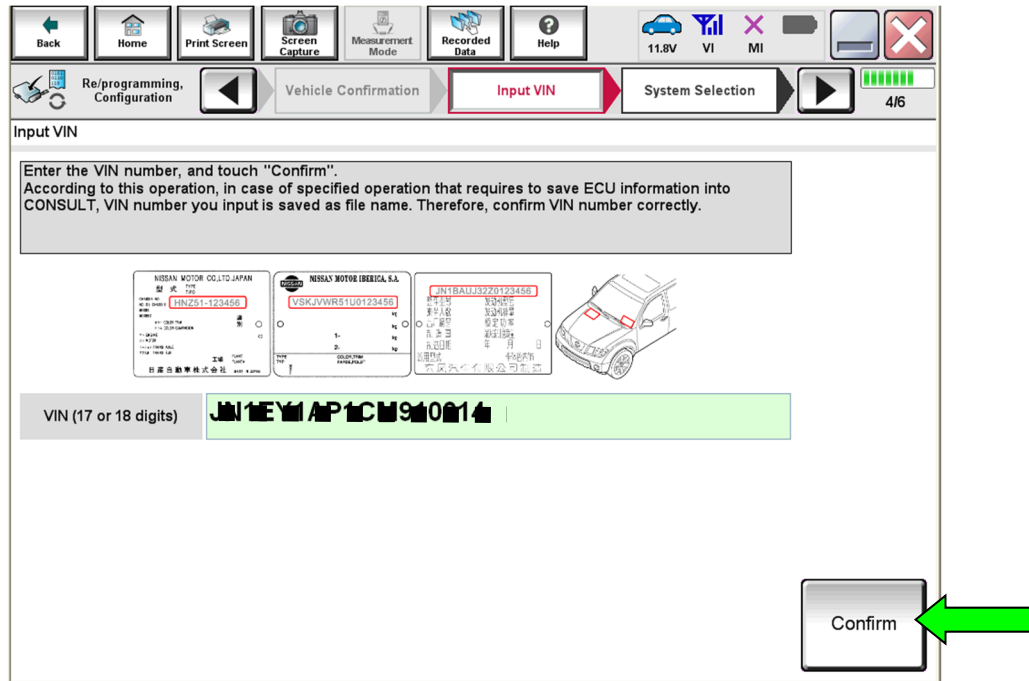


Figure 5

14. Select **ABS**.

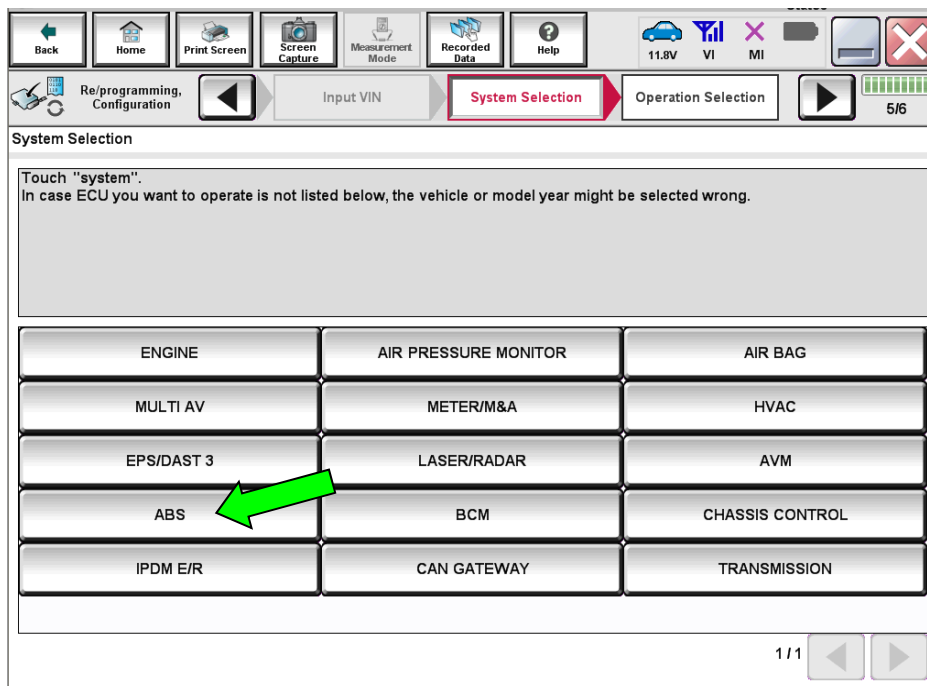


Figure 6

15. Select **Manual Configuration**.
 - **DO NOT** select Reprogramming.

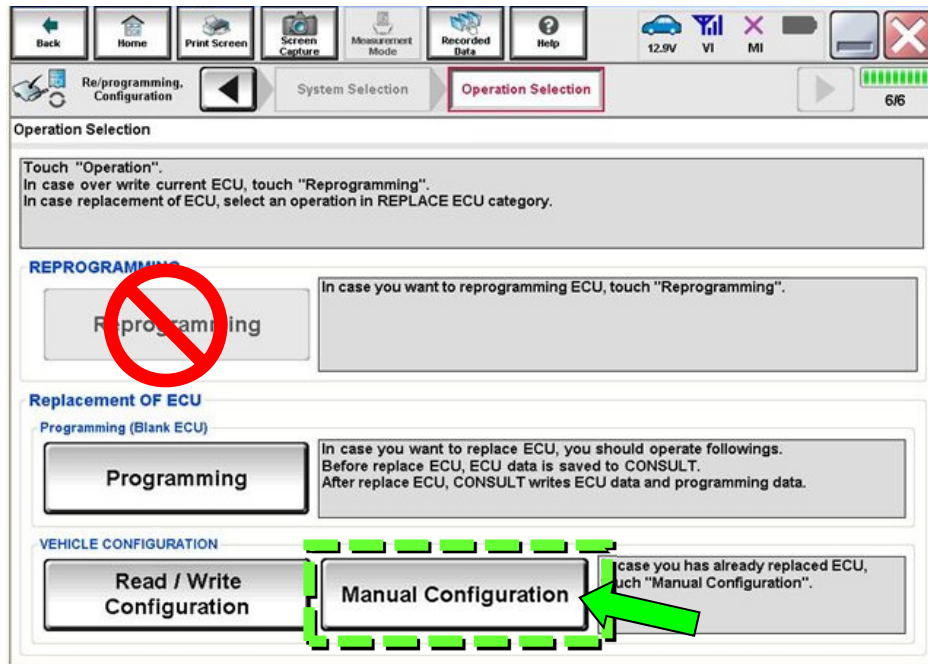


Figure 7

16. Select the correct **Type ID** number.
 - Refer to **Table A** (see page 7) for the correct **Type ID** number for the vehicle you are working on.
 - If needed, use scroll arrows to find the correct number.

NOTE: When a vehicle has only one configuration available, a list will not be displayed. Select **Next** (step 17), and C-III plus will select the correct configuration.

17. Select **Next**.

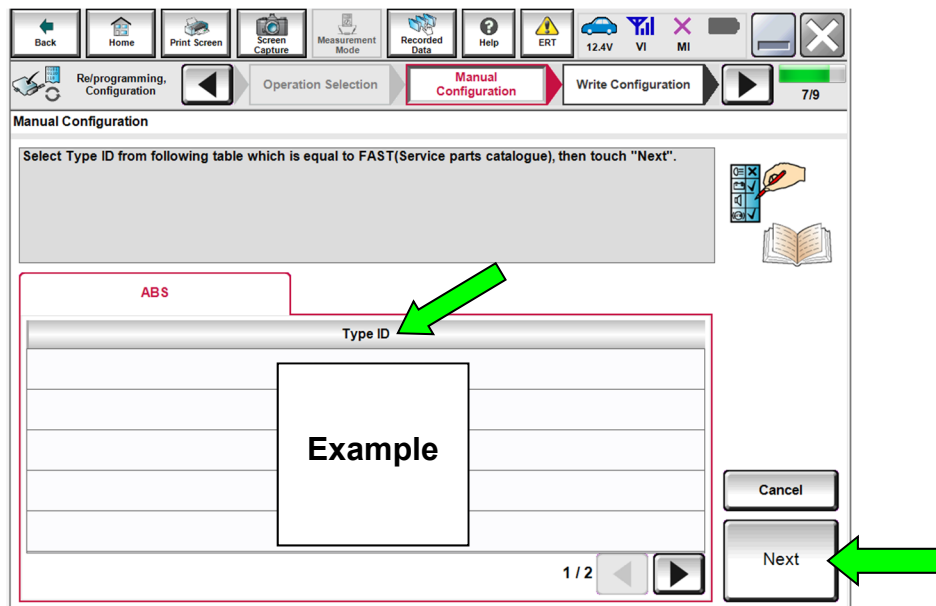


Figure 8

TABLE A

MODEL	VEHICLE OPTIONS	TYPE ID #
2015-2018 Murano	With ICC* 2WD	47660 - 9UD7C
	With ICC* 4WD	47660 - 9UD7D
2016-2018 Maxima	With ICC* and 18 inch wheels	47660 - 4RB2C
	With ICC* and 19 inch wheels	47660 - 4RB5C
2017 Pathfinder	Without ICC/FEB* 2WD	47660-9PP4D
	Without ICC/FEB* 4WD	47660-9PP4C
	With ICC/FEB* 2WD	47660-9PP2C
	With ICC/FEB* 4WD	47660-9PP5C
2018-2019 Pathfinder	2WD (All)	47660-9PP2C
	4WD (All)	47660-9PP5C

* ICC = Intelligent Cruise Control; FEB = Forward Emergency Braking.

18. Confirm the correct Type ID number is selected.
19. Select **OK**.

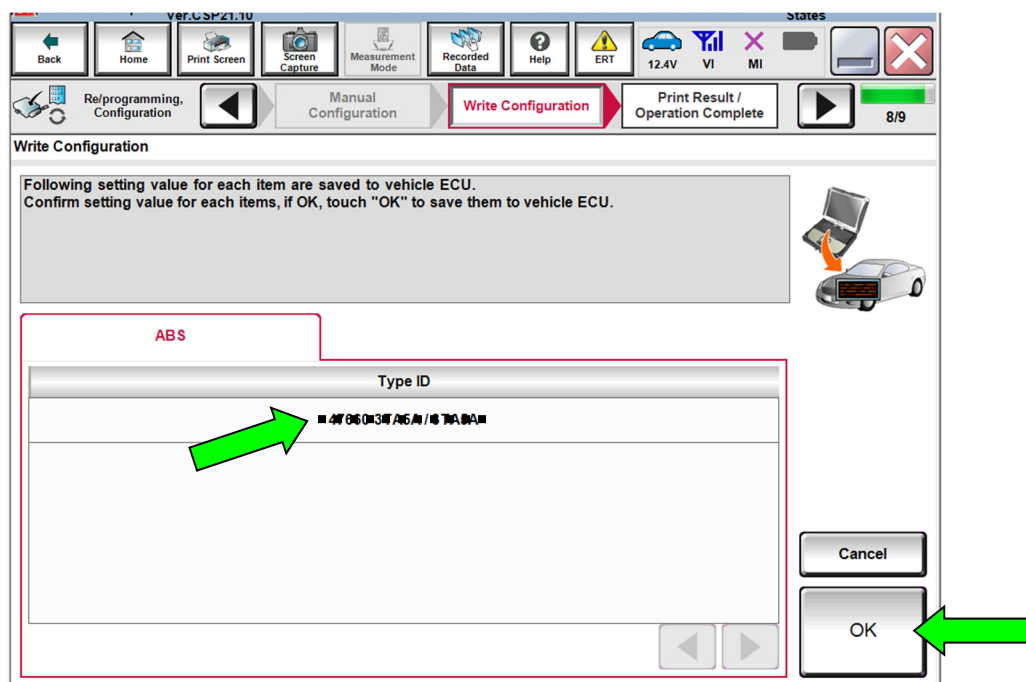


Figure 9

20. When configuration is complete, select **End**.

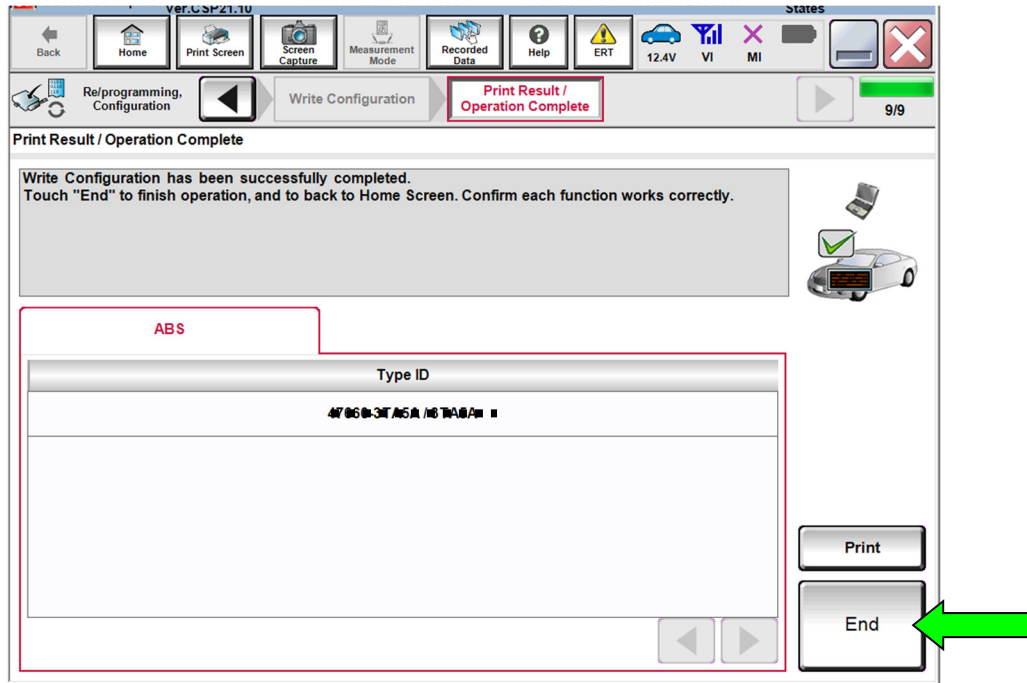


Figure 10

21. After the procedure is complete (ABS control unit replaced and configured), check the ABS warning light for proper operation.

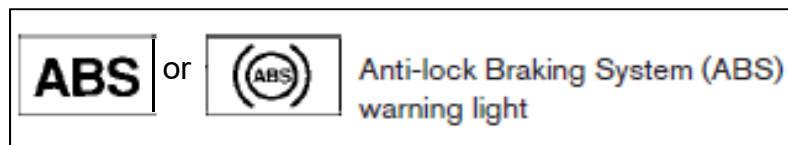


Figure 11

- When the ignition is turned ON, the ABS warning light illuminates for a few seconds and then turns OFF. This indicates the ABS is operational.
- If the ABS warning light stays illuminated, refer to ASIST and the ESM for further diagnosis.
- Repairs beyond ABS control unit replacement are not covered by this bulletin.

PARTS INFORMATION

DESCRIPTION	MODEL	PART #	QUANTITY
ABS Control Unit	Murano (2WD)	47660-9UD6C	1
	Murano (4WD)	47660-9UD6D	
	Maxima	47660-4RB1C	
	2017 Pathfinder (2WD without ICC/FEB)	47660-9PP1D	
	2018-2019 Pathfinder (2WD and 4WD without ICC)	47660-9PP1B	
	2017-2019 Pathfinder (2WD with ICC/FEB) (4WD with ICC/FEB)	47660-9PP1B	
Brake Fluid (1)	N/A	999MP-A4100P	1

- (1) Order this item through the Nissan Maintenance Advantage program: Phone: 877-NIS-NMA1 (877-647-6621). Website order via link on dealer portal www.NNAnet.com and click on the "Maintenance Advantage" link.

CLAIMS INFORMATION

Submit a "CM" line claim using the following claims coding:

CAMPAIGN ("CM") I.D.	MODEL	DESCRIPTION	OP CODE	FRT
R1920	Maxima and Murano	Replace ABS Control Unit	R19200	2.4 hrs
	Pathfinder	Replace ABS Control Unit	R19201	2.6 hrs

AMENDMENT HISTORY

PUBLISHED DATE	REFERENCE	DESCRIPTION
November 12, 2019	NTB19-104	Original bulletin published
November 22, 2019	NTB19-104a	Table A and PARTS INFORMATION section revised