



Thor Motor Coach Recall Repair Instructions

Recall #	19V-789 2019-559		
Description/Title:	20L Sequence Solar Panel		
Affected Product Line(s):	Certain model year 2020 20L Sequence motorhomes		
Service Campaign # :	RC000179	Released Date:	12/23/2019
Repair Code:	TMCRC80488V	Document Date:	12/23/2019
Time Allowed:	0.40	Document Revision:	A

Issue:

It has been decided that on certain model year 2020 20L Sequence motorhomes, the screws securing the solar panel to the luggage rack may fail allowing the solar panel to become loose, unfastened or detached. If the screws were to fail, the solar panel may become loose, unfasten or detach from the luggage rack.

Parts Required:

TMC Recall Kit #0469270 – includes four (4) of each (plate, carriage bolt, locking nut, and washer)

Tools Needed:

- Luggage Rack Key
- 3/8" Wrench
- Allen Wrench
- 11mm nut socket
- Screw gun with square head bit/Phillips
- 8 foot step ladder

Instructions:

NOTE: For this repair, you will be working on one side of the luggage rack and solar panel at a time. ALL repair steps are to be repeated on the other side of the luggage rack and solar panel.



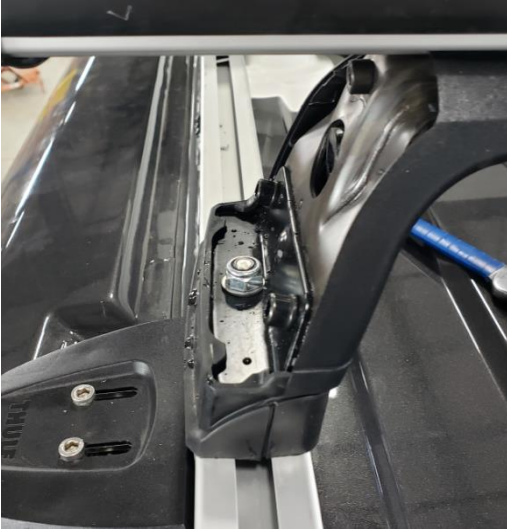
1. Using Allen wrench remove black cap from track (keep screw in a safe place to reuse).

2. With luggage rack key, unlock and remove cover.

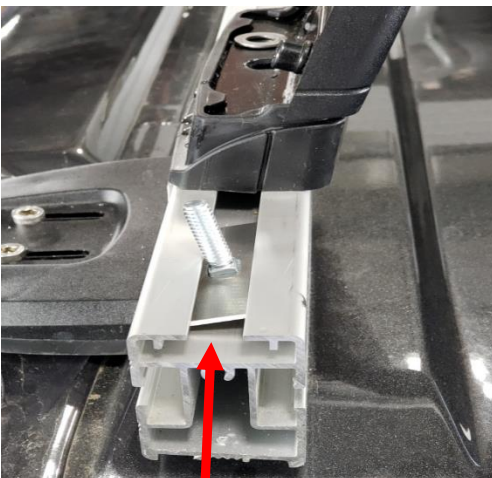


Thor Motor Coach Recall Repair Instructions

3. With 3/8" wrench, remove nut and washer holding luggage rack bar to the track. Loosen rack from track. Slide luggage rack bar bolt and plate out (keep hardware in a safe place to reuse).



4. From parts kit, insert carriage bolt into plate hole; repeat for 3 other plates.



5. Slide plate and carriage bolt (x2) into track channel. Lift luggage bar to slide both sets of plates and bolts down the track channel. Slide luggage rack bar bolt and plate back in place and secure bar to track with washer and nut. Tighten.

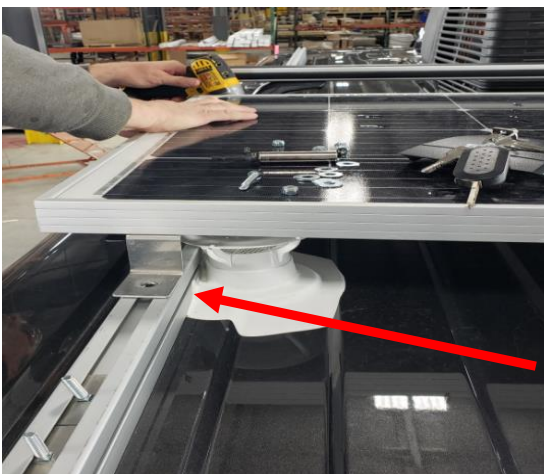
Thor Motor Coach Recall Repair Instructions



6. Install cover and lock luggage rack.

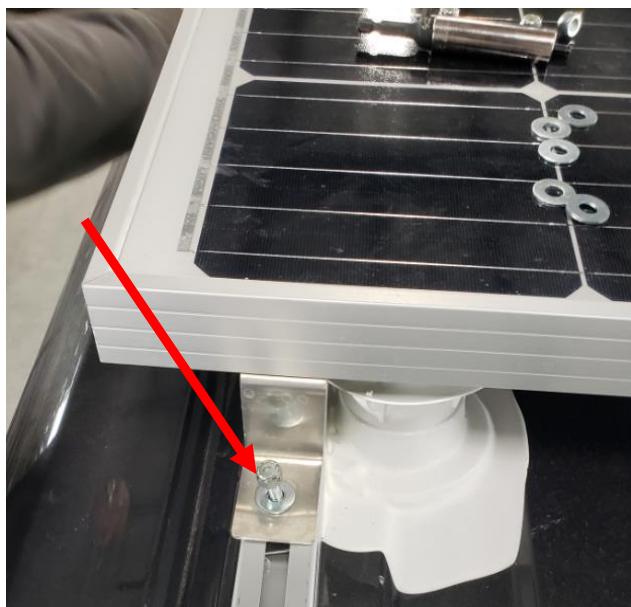


7. Reattach black end cap with original screw.



8. Remove the self-tapping screws from the front and rear solar panel leg. Discard. Lift rear solar panel leg and slide one plate and bolt to the front leg of the solar panel. The other plate and bolt are for the rear leg of the solar panel.

Thor Motor Coach Recall Repair Instructions



9. Insert bolt through the rear leg of the solar panel. Install the washer and locking nut. Tighten with an 11mm nut socket.



10. Insert bolt through the front leg of the solar panel. Install the washer and locking nut. Tighten with an 11mm nut socket.

Repeat steps 1-10 on the other side of the luggage rack and solar panel.