

Thomas Built Buses, Inc.
PO Box 2450 (27261)
1408 Courtesy Road
High Point, NC 27260
(336) 841-5756 Phone
(336) 881-7200 Fax

Dear Dealer,

As part of our research for the field repair of the current knee impact recall, please find enclosed the preliminary instructions for the knee impact area of the field repair. Please perform this repair on some buses and provide feedback as to the field friendliness of the repair.

Thanks you

Michael Stotler
Customer Support Manager
Thomas Built Buses
tbbseatrecall@daimler.com

Subject: FL832 Preliminary Repair

Models Affected: Thomas Built Buses C2, HDX, EFX,
Minotour

Build Dates: August 8, 2014- August 15, 2019

Tools Required:

- Safety gloves
- Staple remover
- Straight shears for foam.
- Electric/Pneumatic staple gun with heavy duty 5/8" Staples

Work Instructions (Interim)

1. Install wheel chocks
2. Turn key off and place in pocket.
3. Remove the bottom seat cushion from seat and set aside for reuse.
4. Wear safety glasses and gloves.
5. Using the staple remover, remove 3 inches of staples from each side of the front bottom of seat **Figure 1**
6. Pull the remaining vinyl out by hand to reveal wood stick

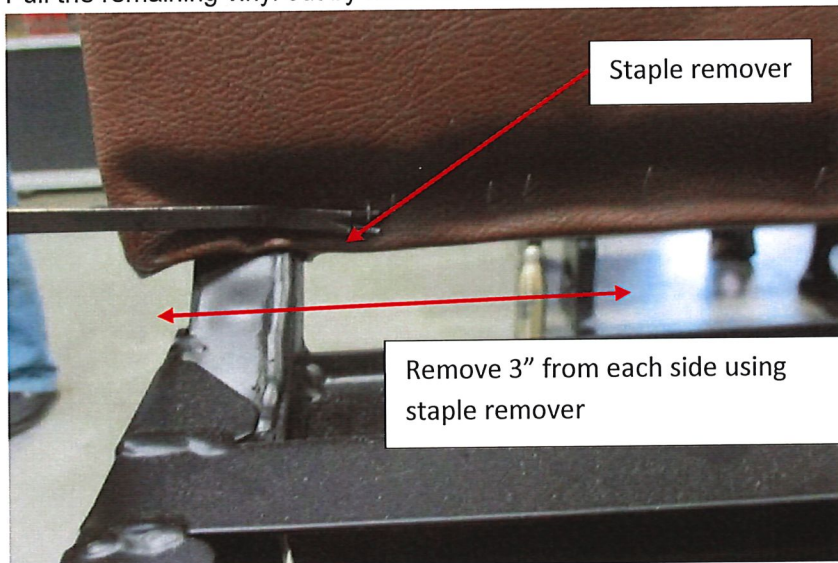


Figure 1: Removal of Vinyl Seat cover

7. Remove the staples from the backside of vinyl. This will be accessed from the front of the seat using staple removal tool. **Figure 2**

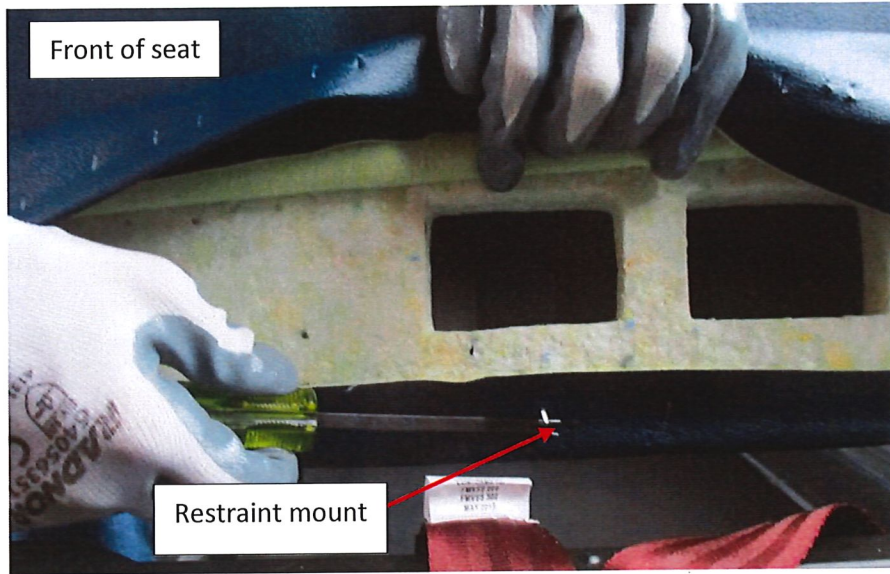


Figure 2: Removal the staples from the back side of the vinyl

8. Using pliers, bend all staples over as shown in **Figure 3** (It is preferable to remove staples)

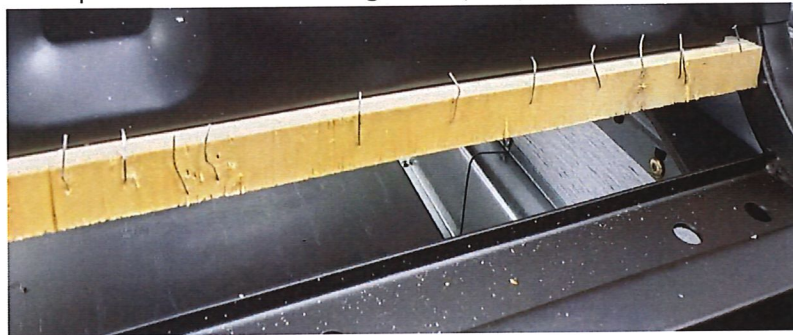


Figure 3: Staples bent over wood piece using pliers

9. Pull vinyl cover and seat cushion up on the back of the seat **Figure 4**

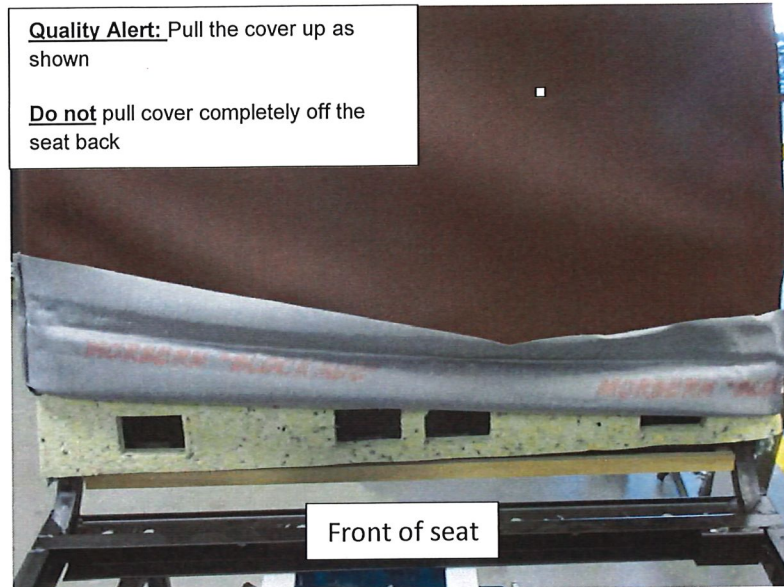


Figure 4: Pulling foam cushion and vinyl cover up (Front of seat)

10. Pull cover up as shown on the back side of seat **Figure 5**

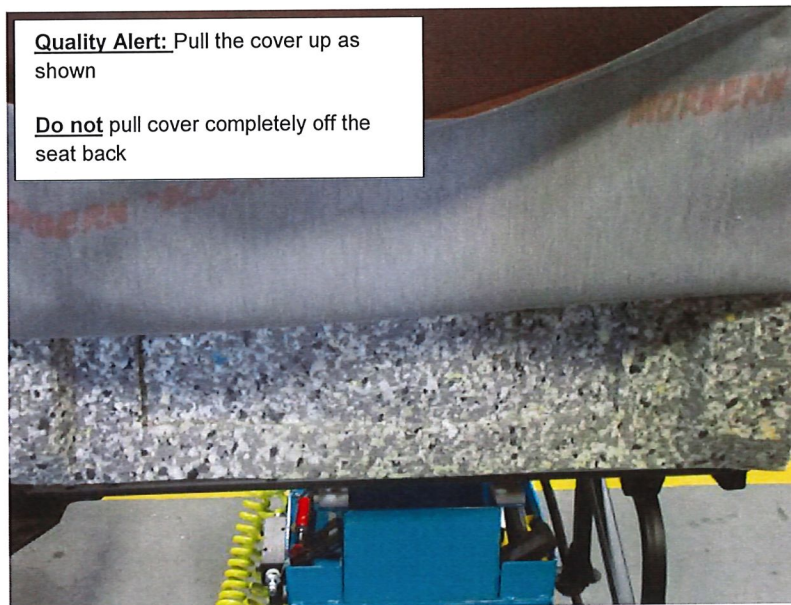


Figure 5 : Pull up the cover (back of seat)

11. Views of front and back of the Vinyl cover and seat foam. **Figure 6**

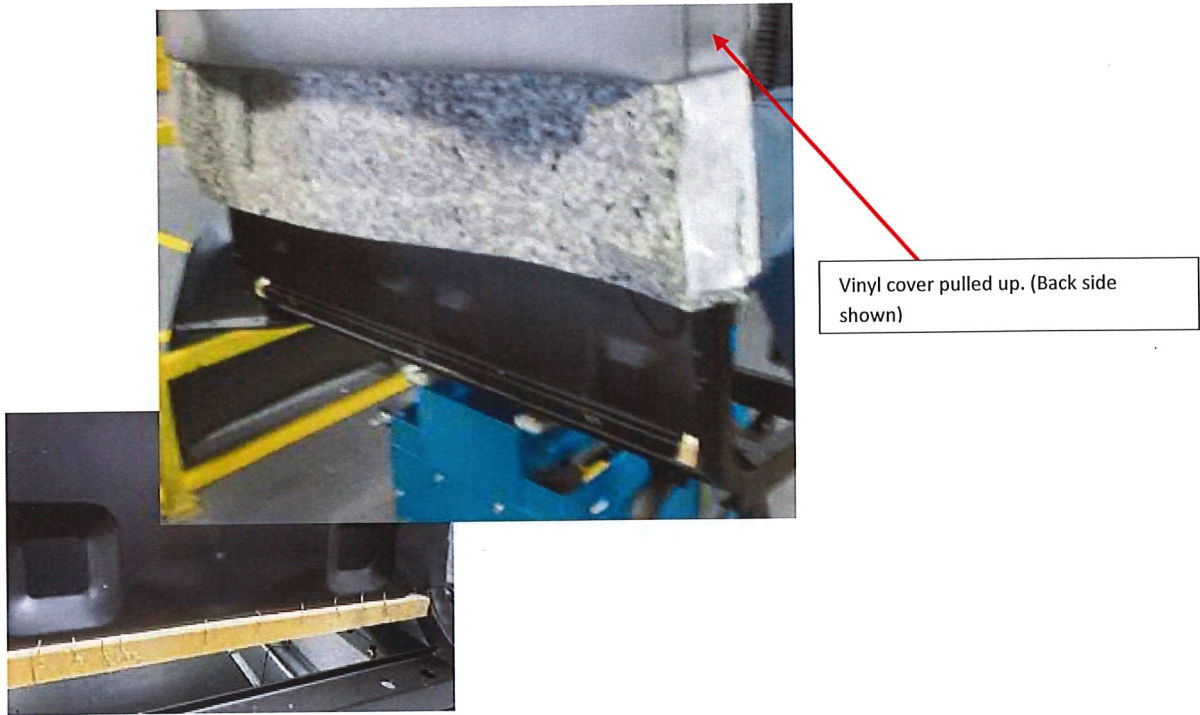


Figure 6: View of front and back of seat with Vinyl and foam pulled up

12. Styrene for the Field fix will be fitted on the left and right of the seat back frame **Figure 7** shows right side of seat back frame.



Figure 7: Styrene shown being installed on seat back frame (Right side)

13. The styrene has two mirroring parts. One for RIGHT and one for LEFT **Figure 8**

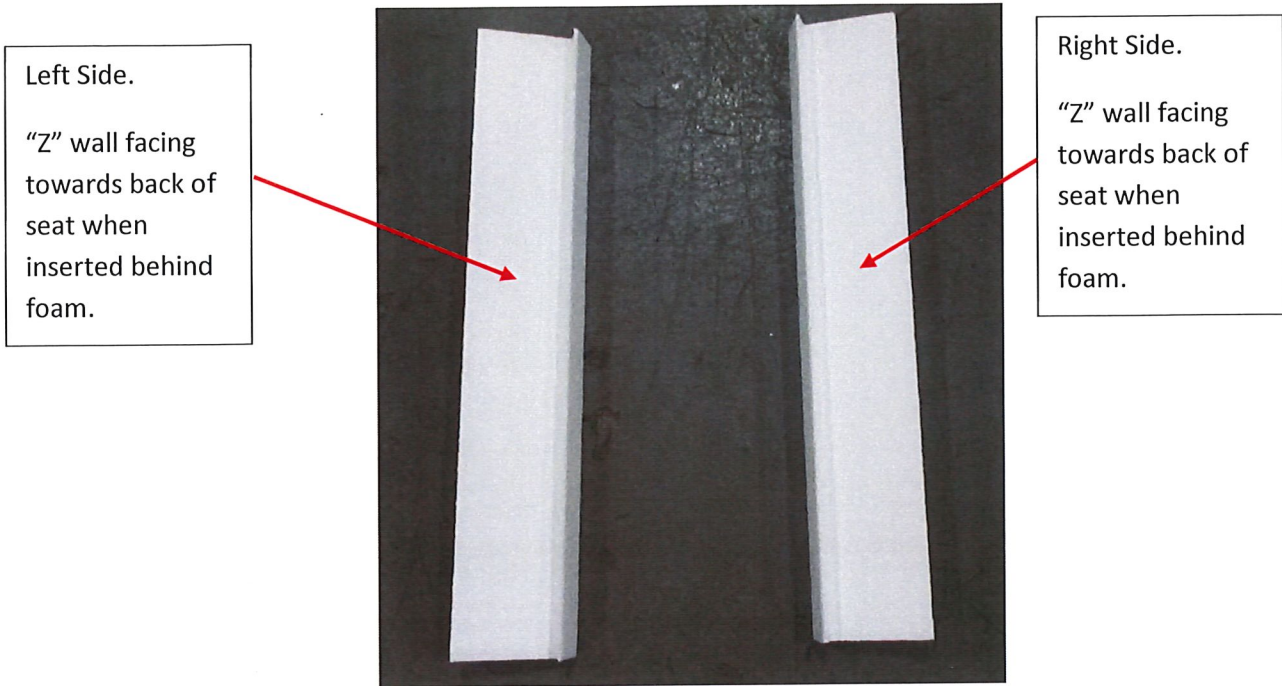


Figure 8: Styrene is Symmetrical but has a "Z" pattern as shown

14. Measure approximately 1- ¼" from foam chamfer on left and right

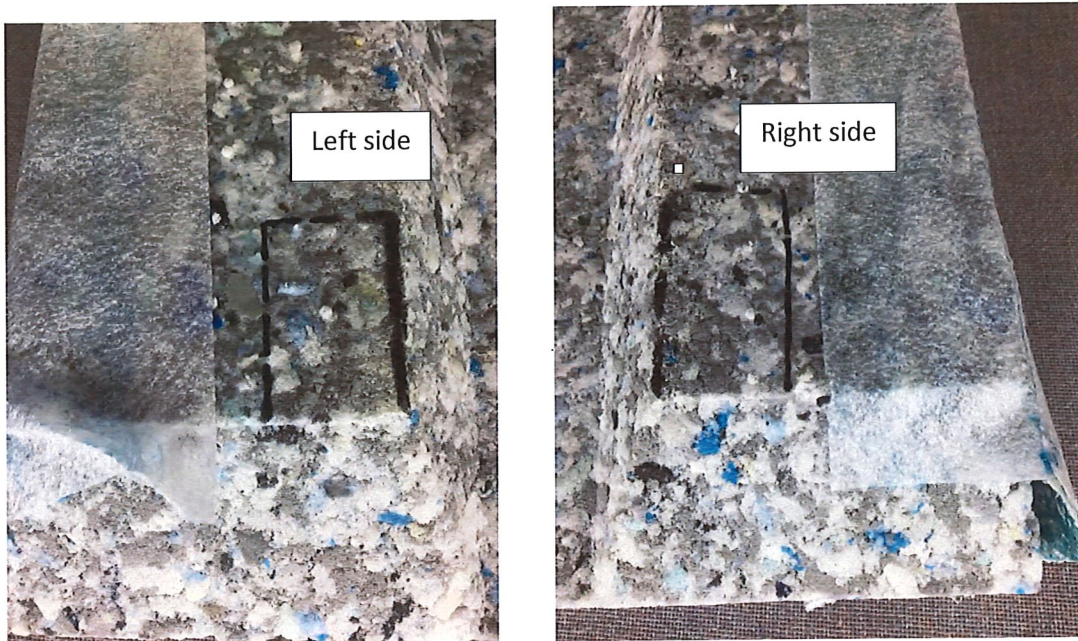


Figure 9: Measure Approximately One and 1/4" from chamfer

15. Cut approximately a 2" slit on left and right as shown in **Figure 10** (To be done on both sides of seat)

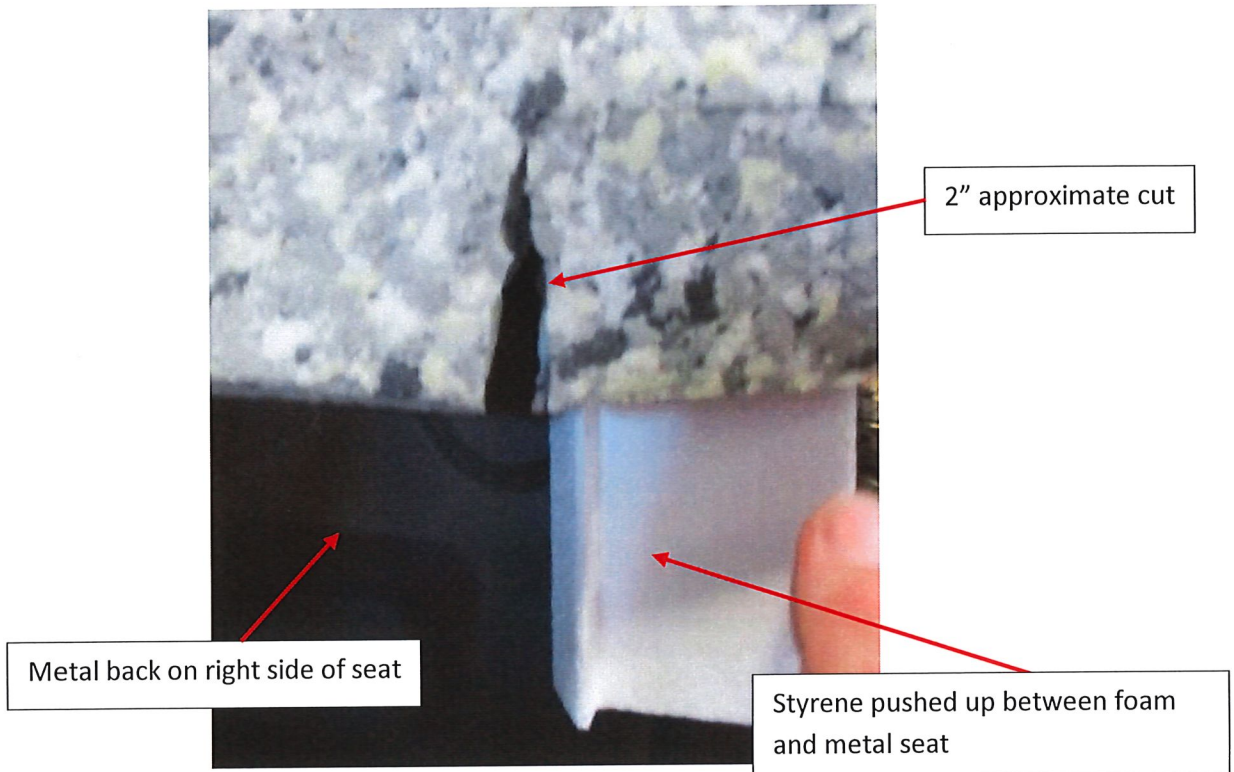


Figure 10: Cut an approximat 2" slit on the back of foam using cutting shears

16. Insert Styrene into cut on each side of seat as shown in Figure 11

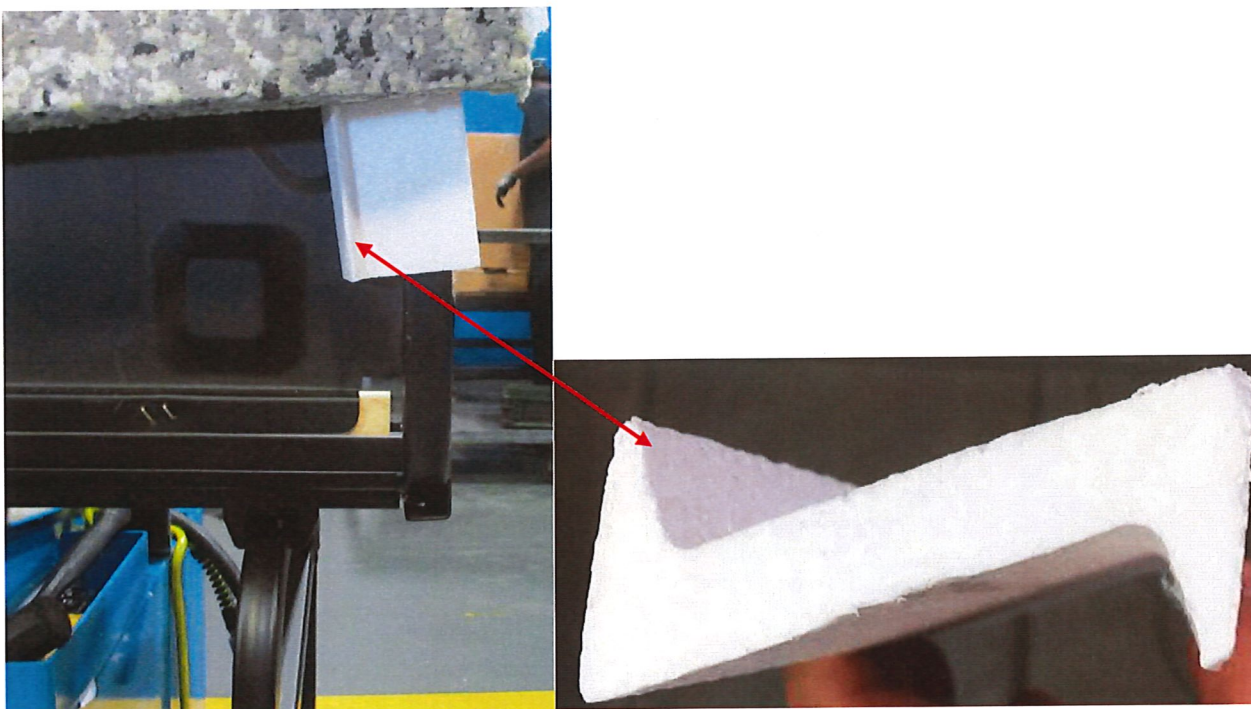


Figure 11: Styrene installed between seat back metal frame and foam

17. Make sure that other end of Z is installed as shown in **Figure 12**

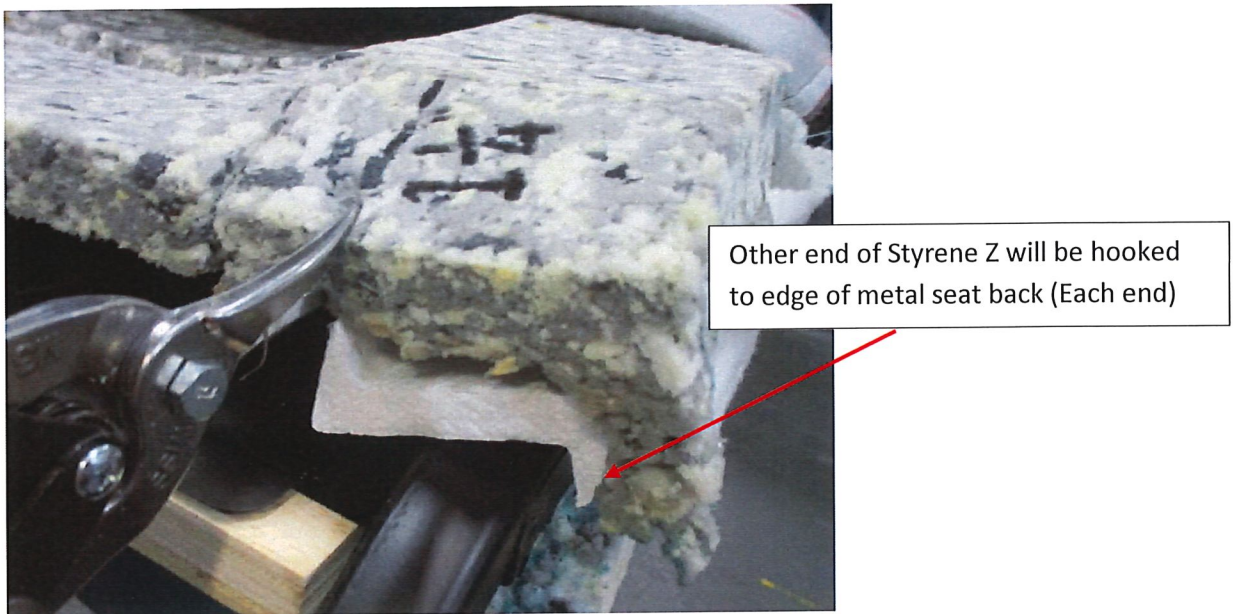


Figure 12: Pulling the foam over the styrene

18. Make sure that the styrene lip is engaging with the 2" cut on both sides on back of seat when foam is pulled down completely on both sides. Also, make sure the foam and styrene is pull down equally on each side and the foam and styrene are equal. **Figure 13**

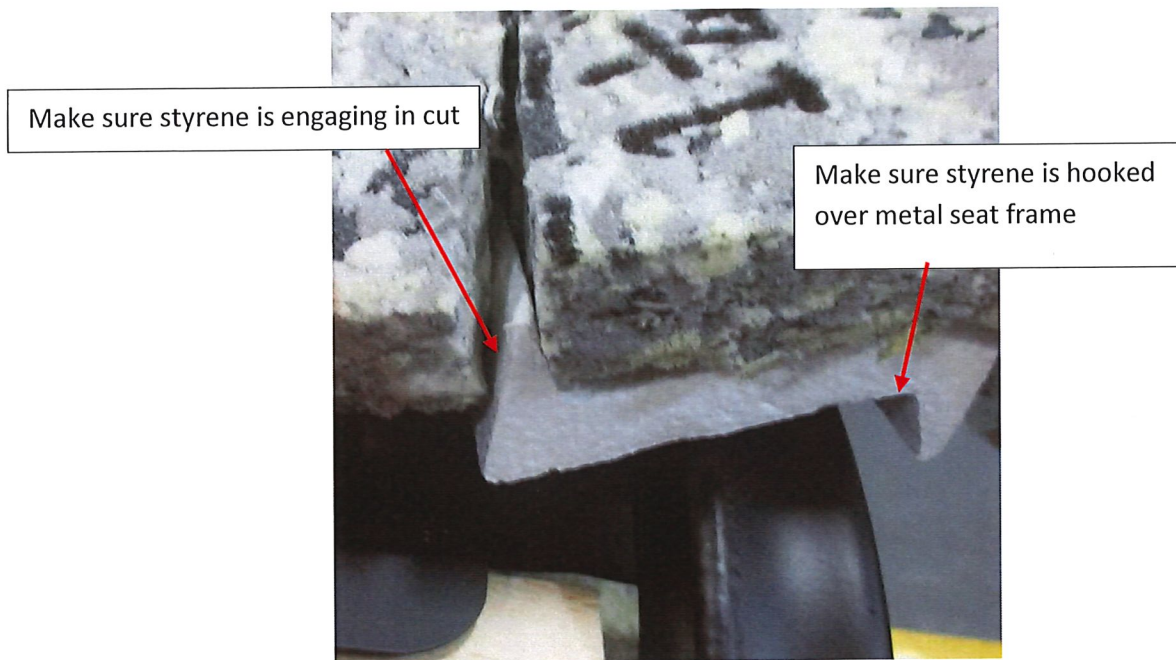


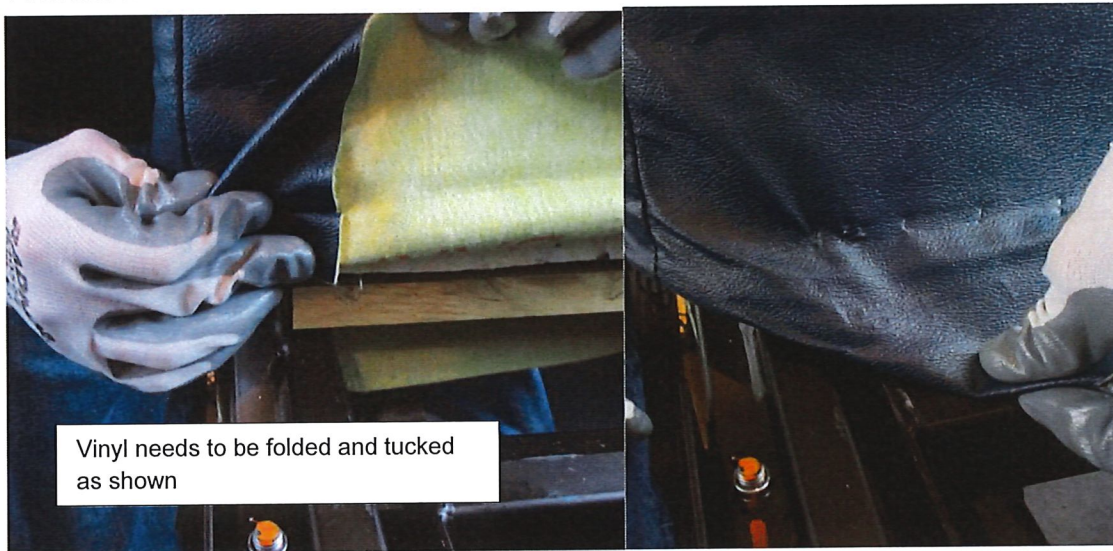
Figure 13: Alignment of foam and styrene

19. Once the styrene/ foam has been installed and flush, pull vinyl down over the foam making sure to pull wrinkles out and make tight. **Figure 14**



Figure 14: Vinyl shown pulled all the way down (Back of seat)

20. Tuck and fold front and back corners of seat around rear seat leg **Figure 15.**



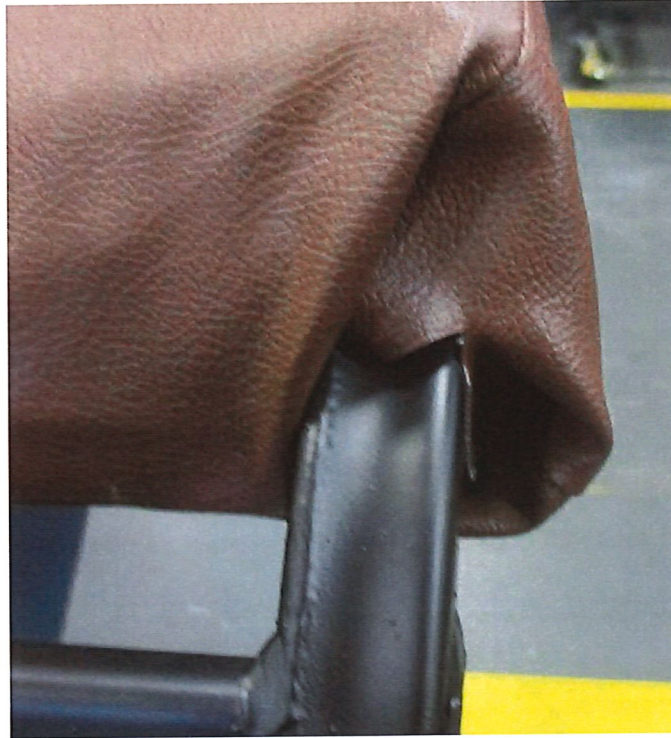


Figure 15: REF completed folding after folding and stapling in place

21. Pull vinyl back under the seat (As it was before) and pull tight. Staple the vinyl to the wood stick as shown **Figure 16**



Figure 16: Staple vinyl from back to wooden stick all the way across

22. Pull the vinyl down on the front of the seat. Make sure it is straight and all wrinkles are pulled out.
 23. Fold vinyl underneath itself to "double up" to the crease that is from the original vinyl installation.
- Figure 17**



Figure 17: Showing how the Vinyl will look when folded and stapled

24. Staple the front vinyl to the wooden stick, making sure nothing is covered with the vinyl that is needed for installation completion.
25. Reinstall bottom seat cushion.