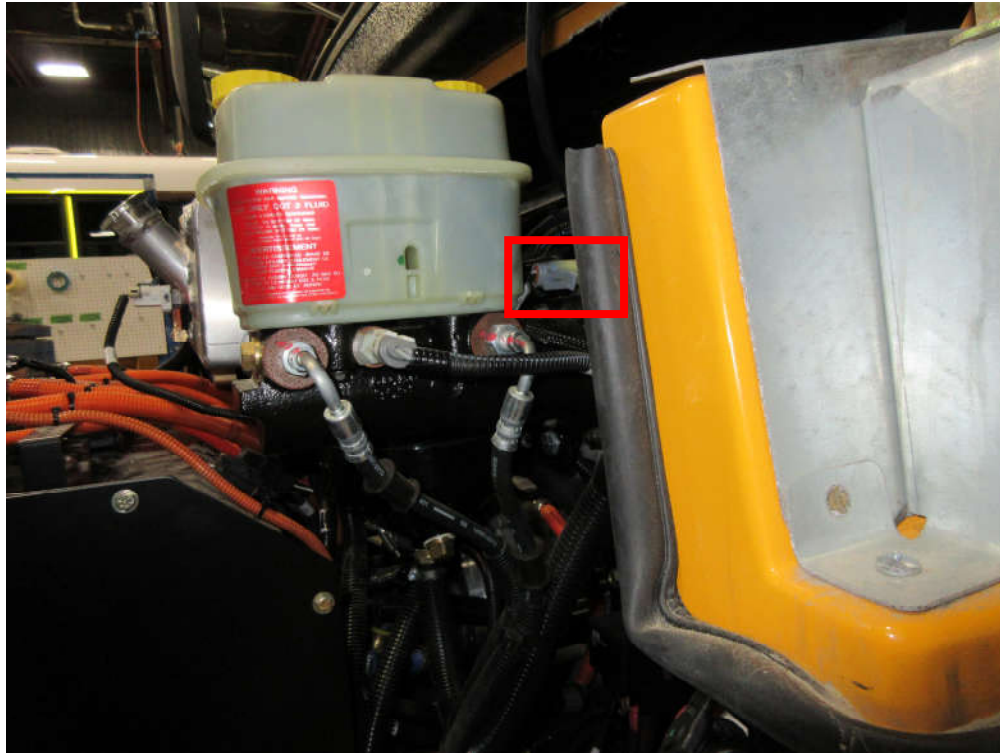

Item_22 connector replacement: Hydraulic booster flow switch



RETROFIT : RETRO – 0050

N° EPN :0609

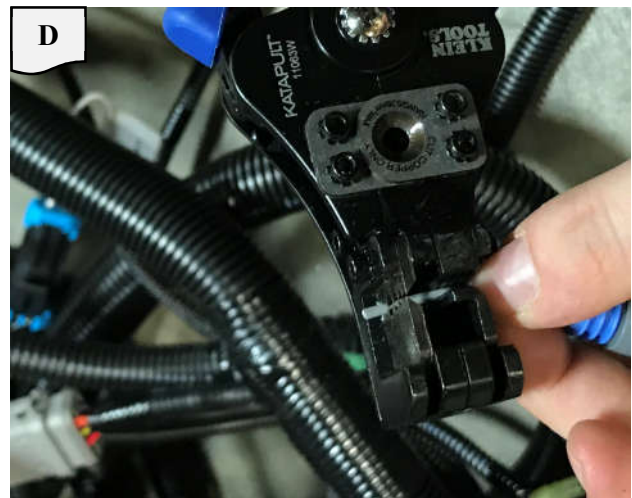
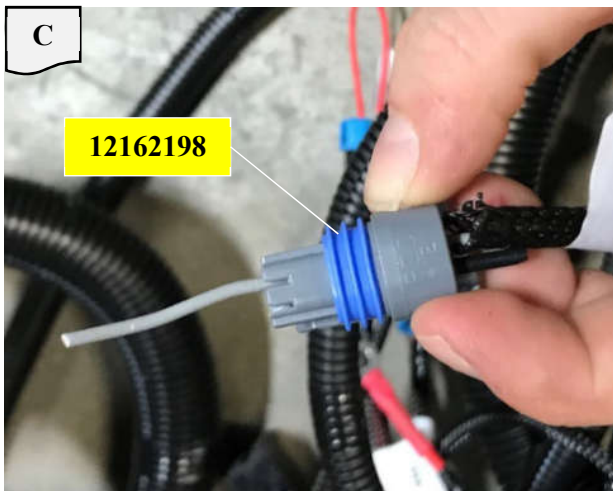
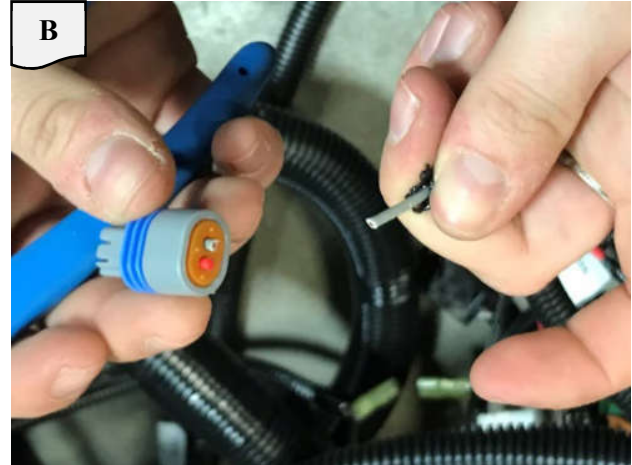
VALIDATION REVISION : 001		
Responsable Ingénierie	Responsable Service	Responsable Qualité
Dominic Boudreau ing.	Martin Drolet	Khalid Hammani

Table of contents

1. CONNECTOR PREPARATION.....	3
2. TERMINAL CRIMPING.....	4
Revision History.....	6

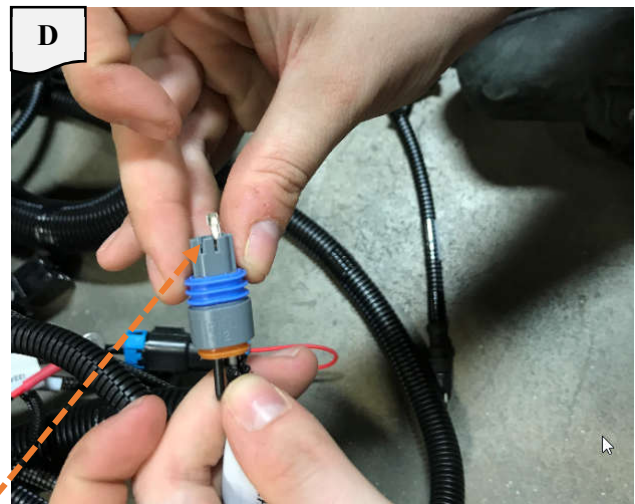
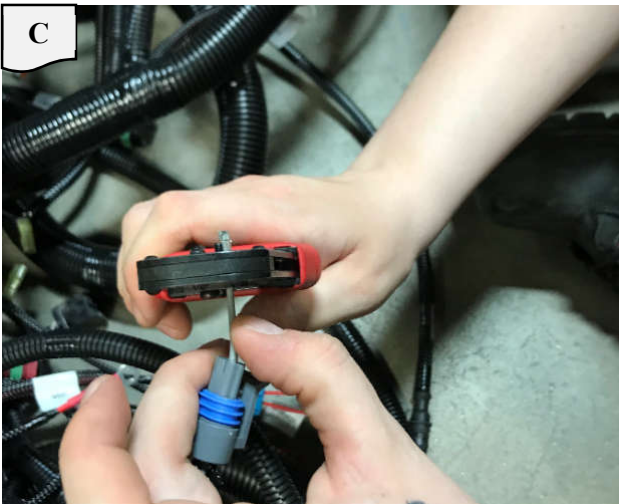
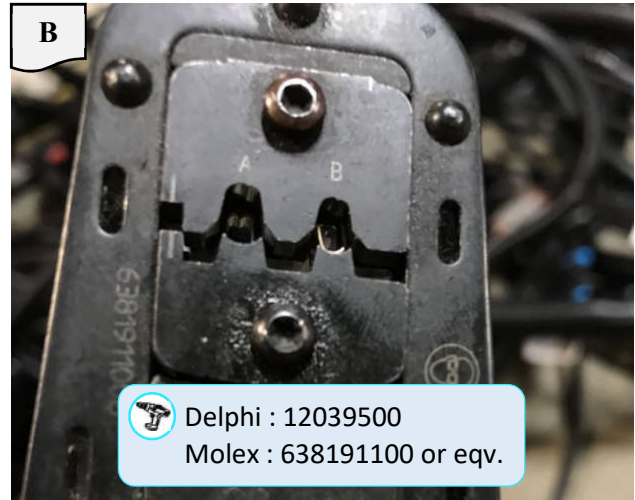
1. CONNECTOR PREPARATION

A	Locate connector i22H – Hydraulic booster flow switch.
B	Cut the wire as close as possible to the connector.
C	Using a new connector, pass the wire through wire cavity 'A'.
D	Strip the wire at a length of 4.5 mm (reference).



2. TERMINAL CRIMPING

A	Place the contact inside the crimping tool cavity for 18 AWG wire.
B	Close the tool handles until it is engaged: one click.
C	Place the previously stripped wire inside the tool and close it to complete the crimping process.
D	Align the contact tab with the connector slot and pull the wire until the contact is locked in place.
E	Insert the cavity plug in connector location 'B'.





Revision History

Rev : 001 - le 13-05-19 par Dominic Boudreau
Création.