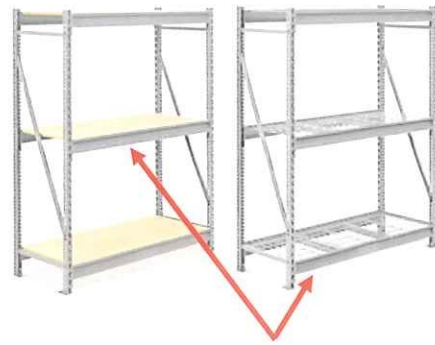


August 5, 2019

Re: **Product Recall – Bulk Storage Racking Shelf Beams**



Bulk Storage Beams

Dear Customer:

We have been informed that our manufacturer of Bulk Storage Racking has issued a voluntary recall for Bulk Storage Beams manufactured between May 15, 2019, and July 10, 2019. Our records indicate that you purchased Bulk Storage Racking from Uline that **may** be affected by this recall. Please refer to the chart on the following page.

Our manufacturer discovered that the automated robotic welding system used for the Bulk Storage Beams could, on rare occasions, weld incorrectly. The weld bead that connects the beam and beam ends may not be centered along the seam between the components, leaving gaps or bubbling in the weld. As a result, the beam may fail when loaded. Please note, the uprights, particle boards/wire decking and shelf supports are not affected.

You can determine whether you have a defective beam by reviewing the examples provided in the Bulk Storage Beams Weld Reference Guide included with this letter.

Please remove product from your Bulk Storage Racking and inspect your beams immediately. In the event that you find your product to be defective or have any questions regarding this voluntary recall, please **contact Uline's Customer Service Department at 1-800-295-5510 or customer.service@uline.com for information on how to receive a replacement beam.**

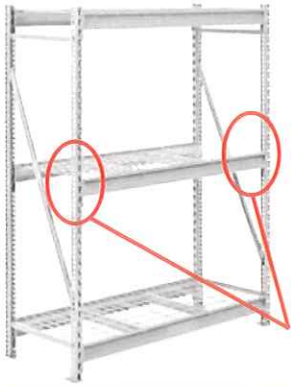
We apologize for any inconvenience this may cause.

Sincerely,

Customer Service Department
Uline, Inc.

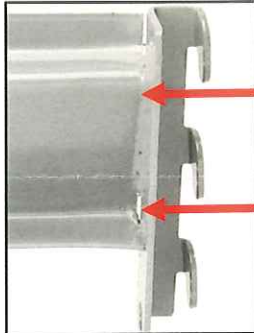
Please remove product from your Bulk Storage Racking and inspect your beams immediately. In the event that you find your product to be defective or have any questions regarding this voluntary recall, please **contact Uline's Customer Service Department at 1-800-295-5510 or customer.service@uline.com for information on how to receive a replacement beam.**

<u>Item Number</u>	<u>Item Description</u>
H-2873	72X24X72" BULK STORAGE RACK
H-2873	72X24X72" BULK STORAGE RACK
H-2873	72X24X72" BULK STORAGE RACK



Bulk Storage Beams Weld Reference Guide

Good Beam Example

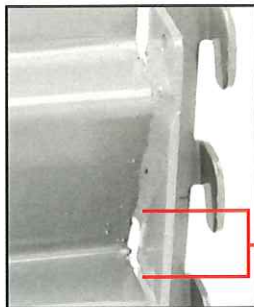


**No Holes or
Bubbling in
the Seam**

**Gap in the
Weld Less
Than 3/8"**

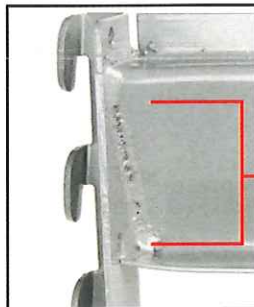
A good beam will have a proper weld along the diagonal following the seam. There will be no visible gaps in the diagonal weld, and there may be one minimal gap in the bend that will measure 3/8" or less.

Bad Beam Examples



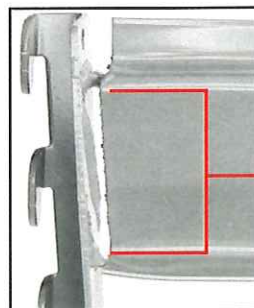
**Gap in the
Weld 3/8" or
Greater**

A bad beam will typically have inconsistencies in the weld, such as gaps in the weld bead. A gap of 3/8" or greater is considered defective.



**Holes or
Bubbling in
the Seam**

A bad beam will typically have inconsistencies in the weld, such as bubbling or holes within the weld bead.



**Weld for the
Seam Is Missing**

A bad beam will typically have inconsistencies in the weld, such as a weld that is visibly missing or off the seam.