



GROUP
Safety Recall Campaign

MODEL
**2020MY
Telluride (ON)**

NUMBER
SC181 (Rev 2, 04/22/2019)

DATE
August 2019

SAFETY RECALL CAMPAIGN

SUBJECT: SEAT BELT INSPECTION
AND/OR REPLACEMENT (SC181)

* NOTICE

This bulletin has been revised to include additional information. New/revised sections of this bulletin are indicated by a black bar in the margin area.

This bulletin provides the procedure to inspect and, if necessary, replace the seat belt assemblies of some 2020MY Telluride (ON) vehicles produced from January 9, 2019 through August 5, 2019. Seat belt assemblies designed for Telluride vehicles for the non-U.S. market may have been inadvertently installed in the driver, front passenger, second and/or third row seats of the affected U.S. vehicles. The affected driver seat belt assemblies are non-U.S. specification seat belt assemblies. The affected front passenger, second and third row seat belt assemblies are not equipped with an automatic locking retractor (ALR) feature and do not comply with S7.1.1.5 (a) of FMVSS 208, 'Occupant crash protection' which requires that each designated seating position that is forward facing (except the driver's position) have a seat belt assembly whose lap belt portion is lockable so that the seat belt assembly can be used to tightly secure a child restraint system.

Dealers are to have technicians inspect and, if incorrect seat belt assemblies are identified, replace them with correct ones as outlined in this bulletin. If an incorrect seat belt assembly is identified, the technician must open a Techline case and submit photos, and then replace with the correct seat belt(s) applicable to the vehicle. Before conducting the procedure, verify that the vehicle is included in the list of affected VINs.

* NOTICE

Under applicable law, you may not sell or otherwise deliver any affected vehicle until it has been repaired pursuant to the procedures set forth in this bulletin.

* NOTICE

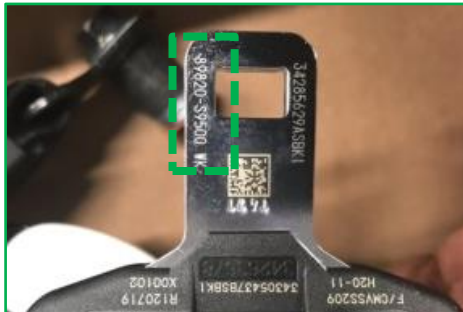
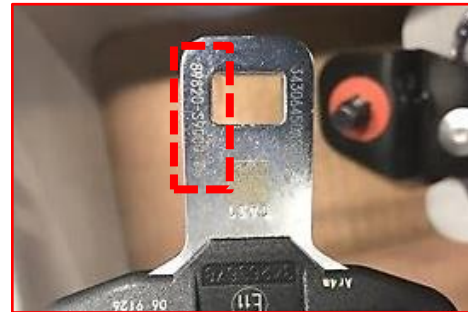
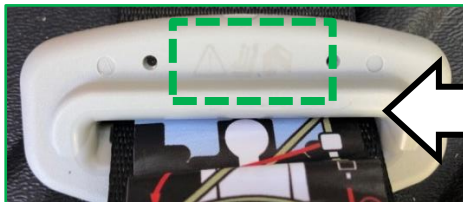
To assure complete customer satisfaction, always remember to refer to WebDCS Warranty Coverage (validation) Inquiry Screen (Service → Warranty Coverage → Warranty Coverage Inquiry) for a list of any additional campaigns that may need to be performed on the vehicle before returning it to the customer.

Printed TSB copy is for reference only; information may be updated at any time.
Always refer to KGIS for the latest information.

Circulate To: General Manager Service Manager Parts Manager
 Service Advisors Technicians Body Shop Manager Fleet Repair

Inspection Procedure – Seat Belts:

Locate the seat belt assemblies outlined in this bulletin to identify the laser markings shown below and verify if the vehicle is affected: No Good (NG). If so, replace the seat belt assembly part(s) with the correct (OK) seat belt assembly part(s) found on the parts table, page 6.

✓OK**✗NG**Part number ends with **XXXXX-S9500**Part number ends with **XXXXX-XXXXX**

NOTE: The laser marking may not be as visible on lighter colored seat belt tongue. Inspect the part number on the seat belt tongue to confirm if the vehicle is affected.

1. Inspect all of the following seat belt assemblies, except for the 2nd row center seat belt (if applicable):
 1. Front 1st row seat belts - 1st row Left/Right
 2. Rear 2nd row seat belts - 2nd row Left/Right
 3. Rear 3rd row seat belts - 3rd row Left/Right/Center (located in headliner)
- 2a. If all seat belts assemblies are the correct ones (OK), no further action is required.
- 2b. If one or more seat belt assemblies are found to be incorrect (NG), proceed to page 3 for instructions and replacement procedure of the affected seat belt(s).

SUBJECT:

SEAT BELT INSPECTION AND/OR REPLACEMENT (SC181)

NG Instructions:

Follow the steps outlined below in the order provided:

1. Open Techline case.
2. Upload photo and note position of the (NG) position.

***IMPORTANT**

Record radio presets. Disconnect the negative (-) battery terminal and wait 30 seconds before proceeding with any of the following procedures.

Replacement Procedure – Front Driver and/or Passenger Seat Belt(s):

1. Replace the driver and/or passenger seat belt by referring to “Body (Interior and Exterior) → Front Seat Belt → Front Seat Belt Pretensioner → Repair procedures” chapter in the applicable Shop manual on KGIS.

Replacement Procedure – Rear Seat(s) 2nd and/or 3rd row Seat Belt(s):

1. Replace the passenger seat belt by referring to “Body (Interior and Exterior) → Rear Seat Belt → Rear Seat Belt Retractor → Repair procedures” chapter in the applicable Shop manual on KGIS.



Modified Replacement Procedure – 3rd row Center Seat Belt:

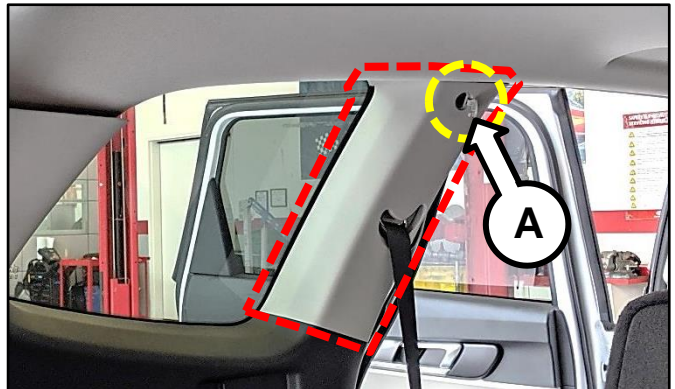
1. Remove the two (2) rear roof assist handles by referring to “Body (Interior and Exterior) → Roof Trim → Assist Handle (rear only) → Repair procedures” chapter in the applicable Shop manual on KGIS.



2. Remove the center pillar upper trim retaining bolt (A) and pull off the top of the center pillar upper trim (Do not remove the trim).

*** NOTICE**

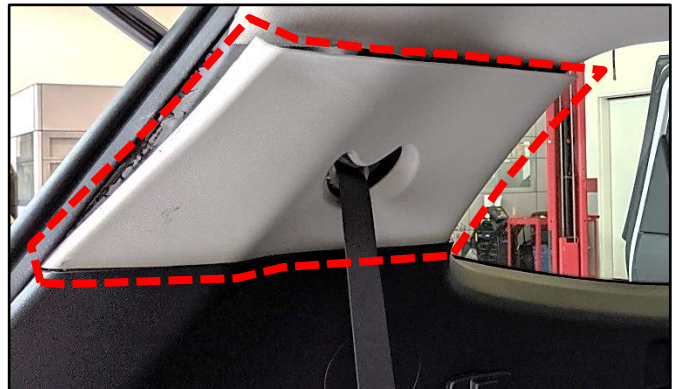
Be careful not to damage or stain the roof trim/headliner.



3. Using a trim tool, carefully release the top of the rear pillar trim as shown.

*** NOTICE**

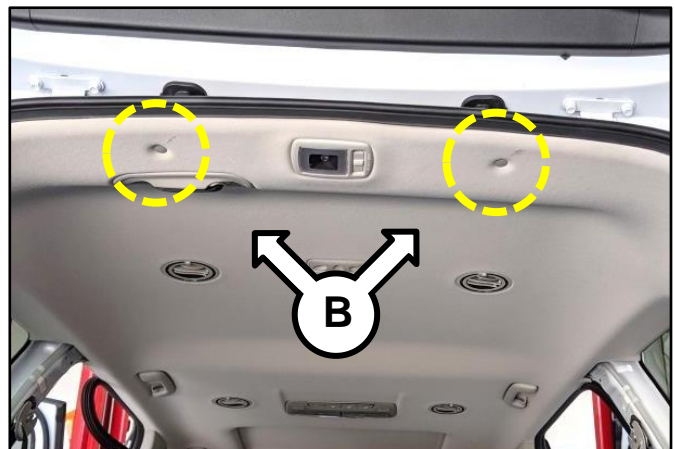
Be careful not to damage or stain the roof trim/headliner.



4. Carefully remove the two (2) rear headliner retaining clips (B).

*** NOTICE**

Damage to roof trim clips may occur, replace as needed. Max. Qty. Two (2). Refer to EPC.



SUBJECT:

SEAT BELT INSPECTION AND/OR REPLACEMENT (SC181)

5. Lift the rear door weatherstrip to expose the back of the headliner. Using a trim tool, pull down on the headliner to release the center area.

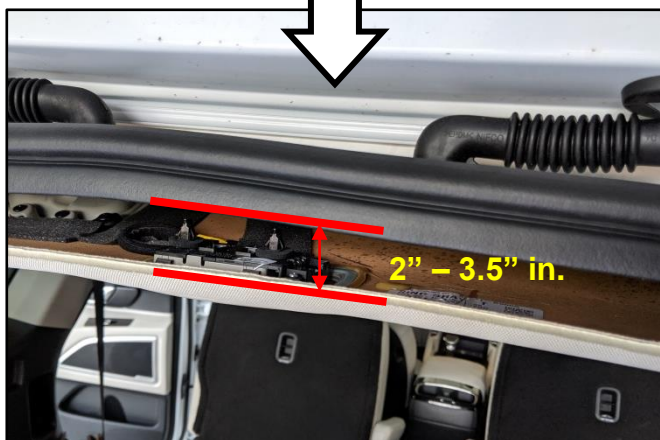
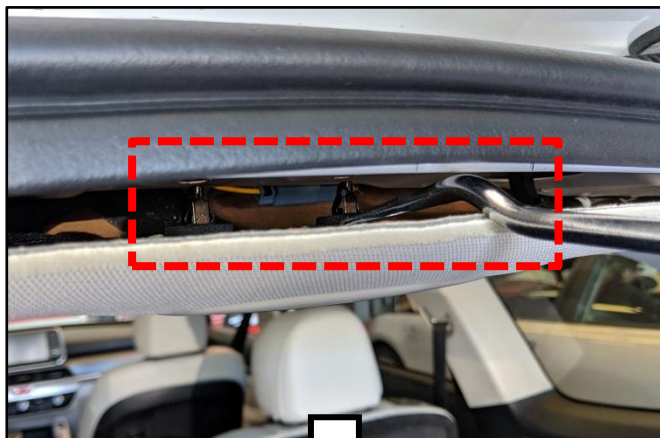
★ NOTICE

Be careful to not get the black butyl sealant on the headliner or the headliner may need to be replaced.

6. Pull down on the back of the headliner assembly (approximately 2" - 3.5" inches, 50.8 – 88.9mm) as shown.

★ NOTICE

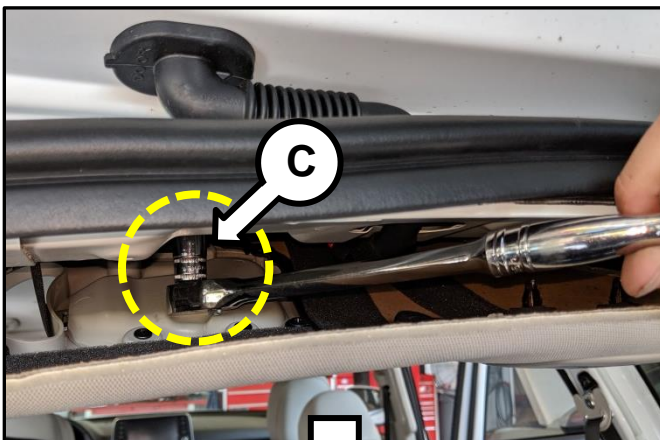
Be careful not to damage or stain the roof trim/headliner.



- 6a. Carefully, insert a ratchet with a short 14mm socket and remove the center seat belt retaining bolts (C).

Torque specification for bolts (C):

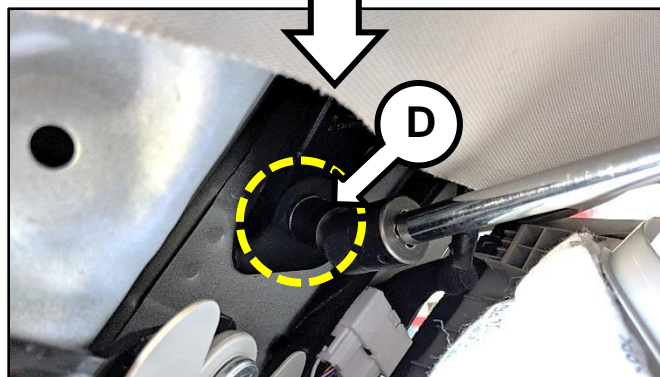
28.9 – 39.8 ft.lb. (39.2 – 53.9 Nm,
4.0 – 5.5 kgf.m)



- 6b. Carefully, insert a ratchet with a short 14mm swivel socket and remove the center seat belt retaining bolts (D).

Torque specification for bolts (D):

28.9 – 39.8 ft.lb. (39.2 – 53.9 Nm,
4.0 – 5.5 kgf.m)



SUBJECT: SEAT BELT INSPECTION AND/OR REPLACEMENT (SC181)

- 7. Replace the rear 3rd row center seat belt retractor assembly with the correct part.

*** NOTICE**

The seat belt retractor assembly will slide out from the back of the headliner opening. Do not lower the headliner more than 3.5" inches as damage may occur.



- 8. Torque the seat belt retaining bolts (C) and (D) to specification.

Torque specification for bolts (C & D):
28.9 – 39.8 ft.lb. (39.2 – 53.9 Nm,
4.0 – 5.5 kgf.m)



- 9. Replace all removed parts in the reverse order of removal, clean any fingerprints or grease stains if needed.
- 10. Reprogram radio presets.



SUBJECT:

SEAT BELT INSPECTION AND/OR REPLACEMENT (SC181)

AFFECTED VEHICLE RANGE:

Model	Production Date Range
Telluride (ON)	January 9, 2019 through August 5, 2019

REQUIRED PART:

Part Name	Part Number	Comments
S/BELT ASSY-FR P/TENSR 3PT,LH	88810 S9500LBR	Refer to EPC Replacement part numbers will not auto-populate and must be entered manually during claim entry.
S/BELT ASSY-FR P/TENSR 3PT,LH	88810 S9500ONW	
S/BELT ASSY-FR P/TENSR 3PT,LH	88810 S9500WK	
S/BELT ASSY-FR P/TENSR 3PT,RH	88820 S9500LBR	
S/BELT ASSY-FR P/TENSR 3PT,RH	88820 S9500ONW	
S/BELT ASSY-FR P/TENSR 3PT,RH	88820 S9500WK	
S/BELT ASSY-2 ND C.L.R 3PT,LH	89810 S9500LBR	Refer to EPC Replacement part numbers will not auto-populate and must be entered manually during claim entry.
S/BELT ASSY-2 ND C.L.R 3PT,LH	89810 S9500ONW	
S/BELT ASSY-2 ND C.L.R 3PT,LH	89810 S9500WK	
S/BELT ASSY-2 ND C.L.R 3PT,RH	89820 S9500LBR	
S/BELT ASSY-2 ND C.L.R 3PT,RH	89820 S9500ONW	
S/BELT ASSY-2 ND C.L.R 3PT,RH	89820 S9500WK	
S/BELT ASSY-3 RD C.L.R 3PT,LH	89813 S9500LBR	Refer to EPC Replacement part numbers will not auto-populate and must be entered manually during claim entry.
S/BELT ASSY-3 RD C.L.R 3PT,LH	89813 S9500ONW	
S/BELT ASSY-3 RD C.L.R 3PT,LH	89813 S9500WK	
S/BELT ASSY-3 RD C.L.R 3PT,RH	89823 S9500LBR	
S/BELT ASSY-3 RD C.L.R 3PT,RH	89823 S9500ONW	
S/BELT ASSY-3 RD C.L.R 3PT,RH	89823 S9500WK	
S/BELT ASSY-3 RD C.L.R 3PT CTR	89853 S9500LBR	
S/BELT ASSY-3 RD C.L.R 3PT CTR	89853 S9500ONW	
S/BELT ASSY-3 RD C.L.R 3PT CTR	89853 S9500WK	



SUBJECT:

SEAT BELT INSPECTION AND/OR REPLACEMENT (SC181)

WARRANTY INFORMATION:

N Code: N99 C Code: C99

Claim Type	Causal P/N	Qty	Repair Description	Labor Op Code	Op Time	Replacement P/N	Qty
R	11251 06161	0	Inspection of Seatbelts (Except 2 nd row center)	191A25I0	0.2 M/H	N/A	0
			Inspect & Replace One (Excludes 3 rd row center)	191A25R0	1.2 M/H	*From the Required Parts List, select the ONE seat belt assembly installed	1
			Inspect & Replace Two (Excludes 3 rd row center)	191A25R1	1.5 M/H	*From the Required Parts List, select the TWO seat belt assemblies installed	2
			Inspect & Replace Three (Excludes 3 rd row center)	191A25R2	1.9 M/H	*From the Required Parts List, select the THREE seat belt assemblies installed	3
			Inspect & Replace Four (Excludes 3 rd row center)	191A25R3	2.3 M/H	*From the Required Parts List, select the FOUR seat belt assemblies installed	4
			Inspect & Replace Five (Excludes 3 rd row center)	191A25R4	2.7 M/H	*From the Required Parts List, select the FIVE seat belt assemblies installed	5
			Inspect & Replace Six (Excludes 3 rd row center)	191A25R5	3.1 M/H	*From the Required Parts List, select the SIX seat belt assemblies installed	6
			Inspect & Replace 3 rd Row Center	191A25R6	0.9 M/H	*From the Required Parts List, select the ONE 3 rd row center seat belt assembly	1
			Inspect & Replace One with 3 rd Row Center	191A25R7	1.8 M/H	*From the Required Parts List, select ONE 3 rd row center seat belt assembly, and ONE other seat belt assembly installed	2
			Inspect & Replace Two with 3 rd Row Center	191A25R8	2.1 M/H	*From the Required Parts List, select ONE 3 rd row center seat belt assembly, and TWO other seat belt assemblies installed	3
			Inspect & Replace Three with 3 rd Row Center	191A25R9	2.5 M/H	*From the Required Parts List, select ONE 3 rd row center seat belt assembly, and THREE other seat belt assemblies installed	4
			Inspect & Replace Four with 3 rd Row Center	191A25RA	2.9 M/H	*From the Required Parts List, select ONE 3 rd row center seat belt assembly, and FOUR other seat belt assemblies installed	5
			Inspect & Replace Five with 3 rd Row Center	191A25RB	3.3 M/H	*From the Required Parts List, select ONE 3 rd row center seat belt assembly, and FIVE other seat belt assemblies installed	6
Inspect & Replace Six with 3 rd Row Center	191A25RC	3.7 M/H	*From the Required Parts List, select ONE 3 rd row center seat belt assembly, and SIX other seat belt assemblies installed	7			

Note: A Techline case is required to be opened, with a clear photo of the incorrect seat belt tongue with wrong markings. The dealership parts department will need to order the replacement part(s). Make sure to list the seating position (Example: 1st /2nd /3rd row left or right) where the incorrect seat belt assembly was found listed in the Techline case. When necessary, sublet code 'X2' can be used to submit rental expense (3 days max) in conjunction with a Replacement Labor Op. The repair procedures to replace the 3rd row center seat belt assembly has been modified from the original repair procedures outlined in KGIS (removal of certain parts as currently shown in the service procedures on KGIS is not necessary to complete the replacement of the seat belt). As a result, the labor time for this repair has been adjusted as listed in the Warranty Information table above.

* NOTICE

VIN inquiry data for this repair is provided for tracking purposes only. Kia retailers should reference SC181 when accessing the WebDCS system.

Printed TSB copy is for reference only; information may be updated at any time. Always refer to KGIS for the latest information.

TSB: SC181 (Rev 2) Telluride (ON) August 2019

