

TO: Mercedes-Benz Dealer Principals, General Managers, Sales Managers, Service Managers, Parts Managers	FROM: Gregory Gunther, Department Manager, Vehicle Compliance and Analysis, Engineering Services
RE: Recall Campaign Launch Notification Carbon-Fiber Driveshaft Bonding – Update MY16-17 190 (GT-Class)	DATE: November 1, 2019

IMPORTANT RECALL CAMPAIGN UPDATE

Please see the attached documents related to the campaign listed above.

Please note that all customer inquiries should be directed to the Customer Assistance Center at 1-800-FOR-MERCEDES.

Sincerely,

Gregory Gunther

Department Manager, Vehicle Compliance & Analysis



Recall Campaign Launch Notification			November 1, 2019
Campaign No. :	NHTSA ID	Campaign Desc. :	Carbon-Fiber Driveshaft Bonding – Update
2019090018	19V457	19P4190019	
This is to notify you of a Recall Campaign update regarding the carbon-fiber driveshaft bonding on an additional 343 Model Year (“MY”) 2016-2017 GT-Class (190 platform) vehicles. The recall campaign will be visible on the www.safercar.gov website and may generate questions from customers. Affected VINs will be flagged in VMI as “OPEN” on November 1, 2019.			
Background			
Issue	Mercedes-Benz AG (“MBAG”), the manufacturer of Mercedes-Benz vehicles, has determined that on certain Model Year (“MY”) 2016-2017 GT-Class vehicles (190 platform), the bonding between the carbon-fiber driveshaft and flange might not meet current production specification. This could affect the performance of the transmission and in limited cases, could lead to a loss of motive power, increasing the risk of a crash.		
What We’re Doing	MBUSA will conduct a voluntary recall. An authorized Mercedes-Benz dealer will replace the carbon-fiber shaft, including the flange, on the affected vehicles.		
Parts	The remedy is available and can be performed.		
Vehicles Affected			
Vehicle Model Year(s)	2016-2017		
Vehicle Model	GT-Class		
Vehicle Populations			
Total Recall Population	994		
Total Vehicles in Dealer Inventory	0		
<p>Given this notice, it is a violation of Federal law for a dealer to sell or lease any new MY16-17 GT-Class vehicles in dealer inventory covered by this notification until the vehicle has been repaired. Once the remedy is available, the vehicles will be flagged as “OPEN” and Work Instructions will be available in Star TekInfo Once the repair is complete, the vehicle may be sold or leased.</p> <p>Loaner and demonstrator vehicles may continue to be driven, but must not be retailed until repaired. As a matter of normal service process, please check for other repair measures which might be applicable to the vehicle(s)</p> <p>Additionally, given this notice, it is a violation of Federal Law for car rental companies to rent new MY16-17 GT-Class vehicles covered by this notification until the vehicle has been repaired.</p>			
Next Steps/Notes			
Customer Notification Timeline	The customer letters will be mailed approximately one week after the remedy becomes available.		
AOMS/SOMS	AOMs – This recall may generate questions from your dealers. Please forward this notice to your dealers ASAP.		
Rental Fleet Partners	This recall may affect vehicles in your fleet. Please contact your respective MBUSA fleet representative for further information and next steps. For repairs, please contact your preferred MBUSA dealer.		
While we regret any inconvenience this may cause, MBUSA is determined to maintain a high level of vehicle quality and customer satisfaction. Please refer all customer inquiries to the Customer Assistance Center at 1-800-FOR-MERCEDES.			





Mercedes-Benz

Campaign No. 2019090018, November 2019

TO: ALL MERCEDES-BENZ CENTERS

SUBJECT: **Model GT-Class vehicles (190 platform)**
Model Year 2016 and 2017
Carbon-Fiber Driveshaft Bonding

Mercedes-Benz AG ("MBAG"), the manufacturer of Mercedes-Benz vehicles, has determined that on certain Model Year ("MY") 2016-2017 GT-Class vehicles (190 platform), the bonding between the carbon-fiber driveshaft and flange might not meet current production specification. This could affect the performance of the transmission and in limited cases, could lead to a loss of motive power, increasing the risk of a crash. An authorized Mercedes-Benz dealer will replace the carbon-fiber shaft, including the flange, on the affected vehicles.

Prior to performing this Recall Campaign:

- Please check VMI to determine if the vehicle is involved in the Campaign and if it has been previously repaired. Always Check VMI for any open campaigns, and perform accordingly.
- Please review the entire Recall Campaign bulletin and follow the repair procedure exactly as described.

Please note that Recall Campaigns **do not expire** and may also be performed on a vehicle with a vehicle status indicator.

Approximately 994 vehicles are involved.

Order No. P-RC-2019090018

This bulletin has been created and maintained in accordance with MBUSA-SLP S423QH001, Document and Data Control, and MBUSA-SLP S424HH001, Control of Quality Records.

Check/test procedure

1. Remove lower engine compartment lining (A, figure 1).

**Figure 1**

2. Open maintenance access on engine-side drive shaft housing.

Rotate engine at center bolt in direction of rotation until affixed label on drive shaft is visible.

i Rotate engine at center bolt in direction of rotation with a 27 mm open end wrench.

**Figure 2**

3. Check production number (**B, figure 3**) of drive shaft.

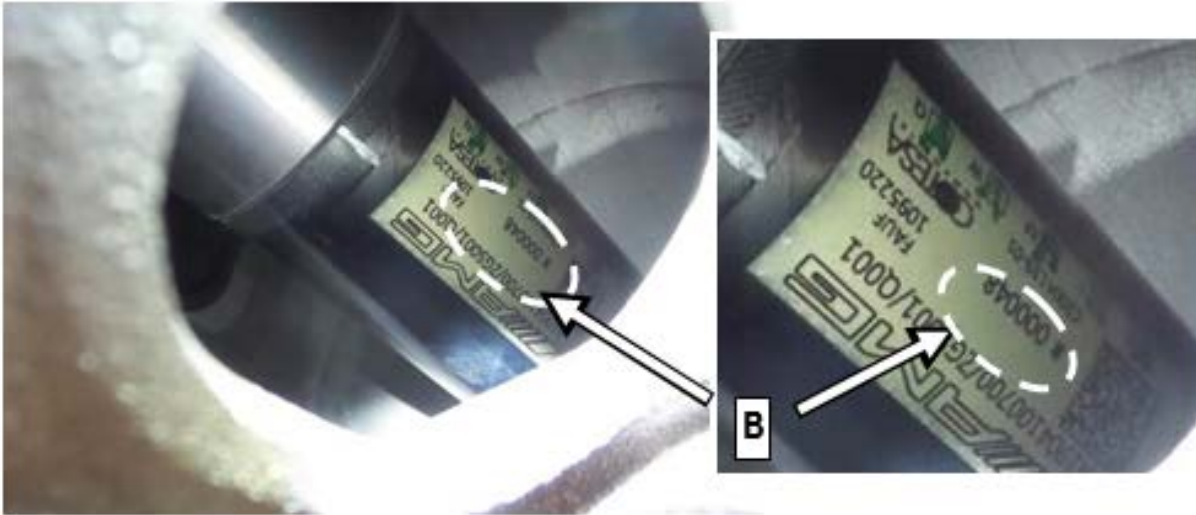


Figure 3

- a. Production number as of **000322** up to **002635** and as of **005502** up to **006655**: Perform **work procedure**
- b. Production number as of **002636** up to **005501** and as of **006656**: **End measure**

i The **findings** from the check/test procedure must be recorded **in writing on the work order**.

Work procedure

1. Replace drive shaft.
i For basic data, see **AR41.10-P-0051MNB**.

Special tools

Quantity	Designation	Part no.
1	Assembly drift	W 190 589 00 15 00

Primary Parts Information

Qty.	Part Name	Part Number	Estimated Replacement Rate
1	Drive shaft	A 190 410 23 00	100%
1	O-ring	A 027 997 25 45	100%
2	Mounting plate lock washer	A 190 411 15 00	100%
1	Screw	N 000000 006551	100%
6	Hexalobular bolt (drive shaft to flange)	N 000000 000276	100%
16	Hexalobular bolt (propeller shaft to engine and transmission)	N 000000 006589	100%
2	Hexalobular bolt (propeller shaft to transmission, starter)	N 910105 010044	100%
2	Nut (propeller shaft to transmission, starter)	N 910112 010001	100%
1	Lubricant	A 000 989 03 67	100%
2	Clamp (exhaust system)	A 000 490 15 41	100%
1	Sealing ring (exhaust system)	A 221 492 00 81	100%
4	Transmission oil line sealing ring	A 020 997 27 45	100%
12	Screw (axle shaft to rear axle flange)	A 002 990 10 03	100%
2	Collar nut (rear axle shafts to hub)	A 000 353 13 73	100%
4	Nut (torsion bar linkage to wheel carrier)	N 000000 003275	100%
2	Bolt (upper transverse control arm to wheel carrier)	N 910105 014016	100%
2	Nut (transverse control arm to wheel carrier)	A 005 990 47 50	100%
2	Bolt (transmission mount to transmission carrier)	N 910105 008019	100%
8	Bolt (transmission carrier to transmission)	N 910143 008004	100%
As required*	Long-life grease	A 000 989 63 51 11	100%

*One container for at least 10 vehicles

Warranty Information**With Check**

Operation: Check drive shaft (02-1194)

Damage Code	Operation Number	Labor Time (hrs.)
41 900 19 8	02-1194	0.9

With Check and Repair

Operation: Check drive shaft (02-1194)
Replace drive shaft (02-1124)

Damage Code	Operation Number	Labor Time (hrs.)
41 900 19 7	02-1194	0.9
	02-1124*	9.3

*Includes: Fully remove/install engine compartment linings; remove/install drive shaft with housing; check/correct transmission oil level; unscrew/screw on ground line; remove/install 2 wheel and tire assemblies; extra work for: Remove/install 2 wheel and tire assemblies in case of assembly with wheel lift dolly; extra work for: Remove/install exhaust system

i **Note**

Operation Number labor times are subject to change.