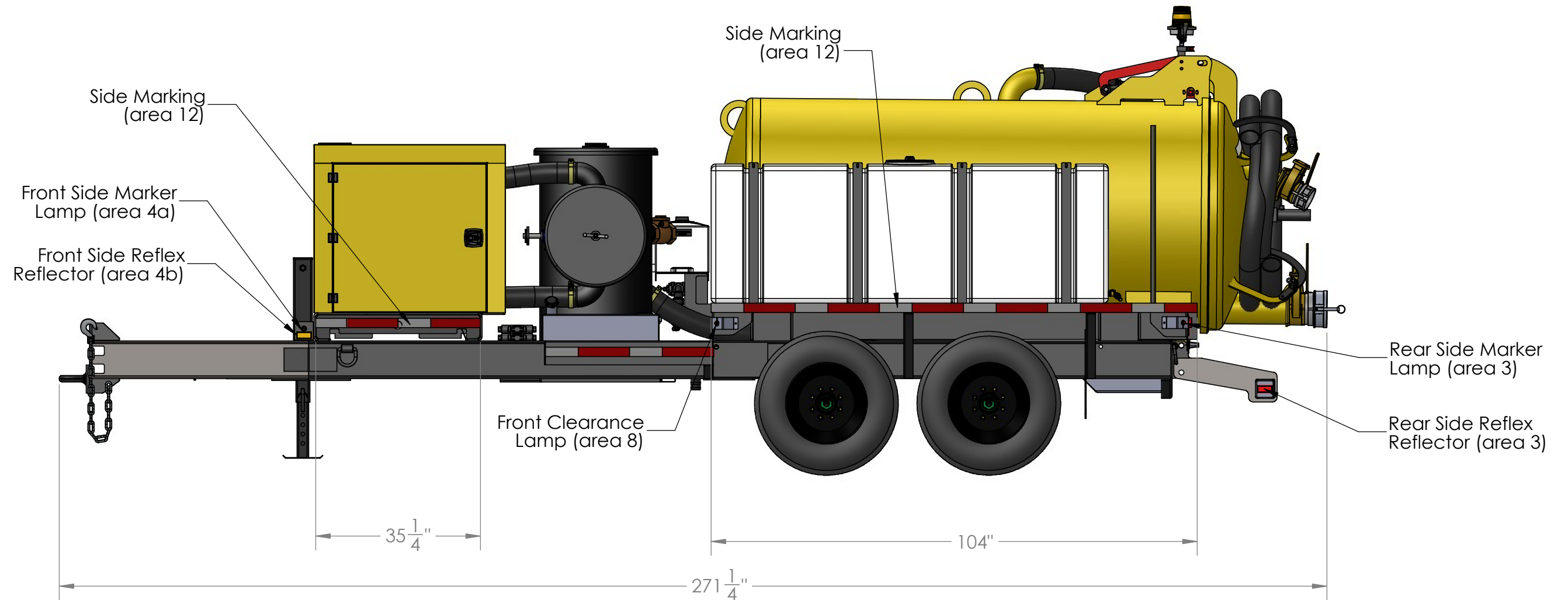


| REVISIONS |                 |           |          |
|-----------|-----------------|-----------|----------|
| REV.      | DESCRIPTION     | DATE      | APPROVED |
| 0         | Initial Release | 7/15/2019 | GSM      |



**VAC-TRON EQUIPMENT LLC**

TITLE:

**LP 800 SDT HVY**

|          |   |
|----------|---|
| SIZE     | D |
| <b>B</b> |   |

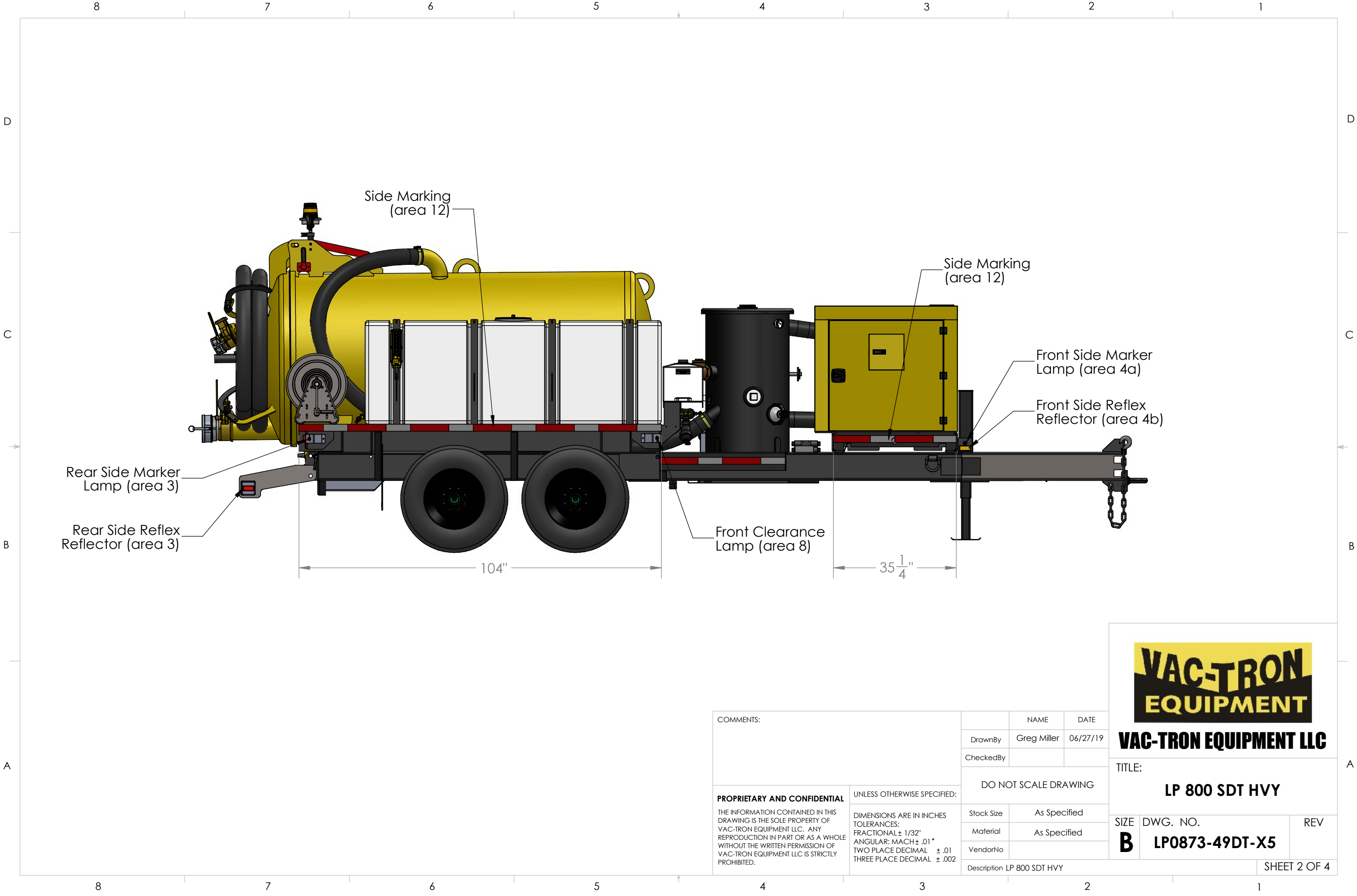
|          |  |
|----------|--|
| DWG. NO. |  |
|----------|--|

**LP0873-49DT-X5**

REV

SHEET 1 OF 4

|  |  |   |                            |              |
|--|--|---|----------------------------|--------------|
| COMMENTS:  |  |   | NAME                       | DATE         |
|  |  | DrawnBy   | Greg Miller                | 06/27/19     |
|  |  | CheckedBy   |                            |              |
|  |  | DO NOT SCALE DRAWING  |                            |              |
| <b>PROPRIETARY AND CONFIDENTIAL</b><br><br>THE INFORMATION CONTAINED IN THIS DRAWING IS THE SOLE PROPERTY OF VAC-TRON EQUIPMENT LLC. ANY REPRODUCTION IN PART OR AS A WHOLE WITHOUT THE WRITTEN PERMISSION OF VAC-TRON EQUIPMENT LLC IS STRICTLY PROHIBITED. |  | UNLESS OTHERWISE SPECIFIED:   |                            |              |
|  |  | DIMENSIONS ARE IN INCHES<br>TOLERANCES:<br>FRACTIONAL $\pm 1/32"$<br>ANGULAR: MACH $\pm .01^\circ$<br>TWO PLACE DECIMAL $\pm .01$<br>THREE PLACE DECIMAL $\pm .002$ | Stock Size                 | As Specified |
|  |  |   | Material                   | As Specified |
|  |  |   | VendorNo                   |              |
|  |  |   | Description LP 800 SDT HVY |              |



**VAC-TRON EQUIPMENT LLC**

TITLE:  
**LP 800 SDT HVY**

SIZE DWG. NO. REV  
**B** **LP0873-49DT-X5**

|  |  |   |  |                      |  |              |  |
|--|--|---|--|----------------------|--|--------------|--|
| COMMENTS:  |  |   |  | NAME                 |  | DATE         |  |
|  |  | DrawnBy   |  | Greg Miller          |  | 06/27/19     |  |
|  |  | CheckedBy   |  |                      |  |              |  |
| <b>PROPRIETARY AND CONFIDENTIAL</b><br><br>THE INFORMATION CONTAINED IN THIS DRAWING IS THE SOLE PROPERTY OF VAC-TRON EQUIPMENT LLC. ANY REPRODUCTION IN PART OR AS A WHOLE WITHOUT THE WRITTEN PERMISSION OF VAC-TRON EQUIPMENT LLC IS STRICTLY PROHIBITED. |  | UNLESS OTHERWISE SPECIFIED:   |  | DO NOT SCALE DRAWING |  |              |  |
|  |  |   |  | Stock Size           |  | As Specified |  |
|  |  | DIMENSIONS ARE IN INCHES<br>TOLERANCES:<br>FRACTIONAL ± 1/32"<br>ANGULAR: MACH ± .01 °<br>TWO PLACE DECIMAL ± .01<br>THREE PLACE DECIMAL ± .002 |  | Material             |  | As Specified |  |
|  |  |   |  | VendorNo             |  |              |  |
|  |  | Description LP 800 SDT HVY  |  |                      |  | SHEET 2 OF 4 |  |

<

8

7

6

5

4

3

2

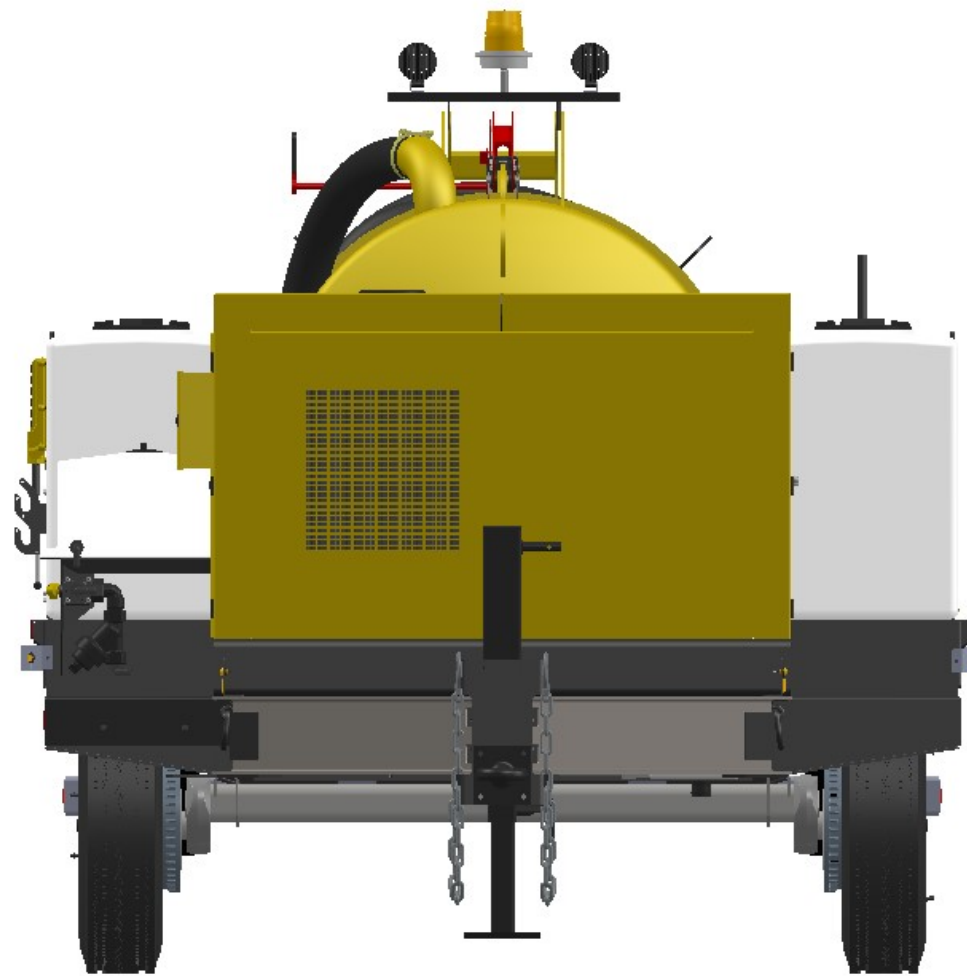
1

D

C

B

A



Front Clearance  
Lamp (area 8)

Rear Upper Body  
Marking (area 9)

Rear Lower Body  
Marking (area 11)

Rear Clearance  
Lamp (area 6)

Rear Reflex  
Reflector (area 1)

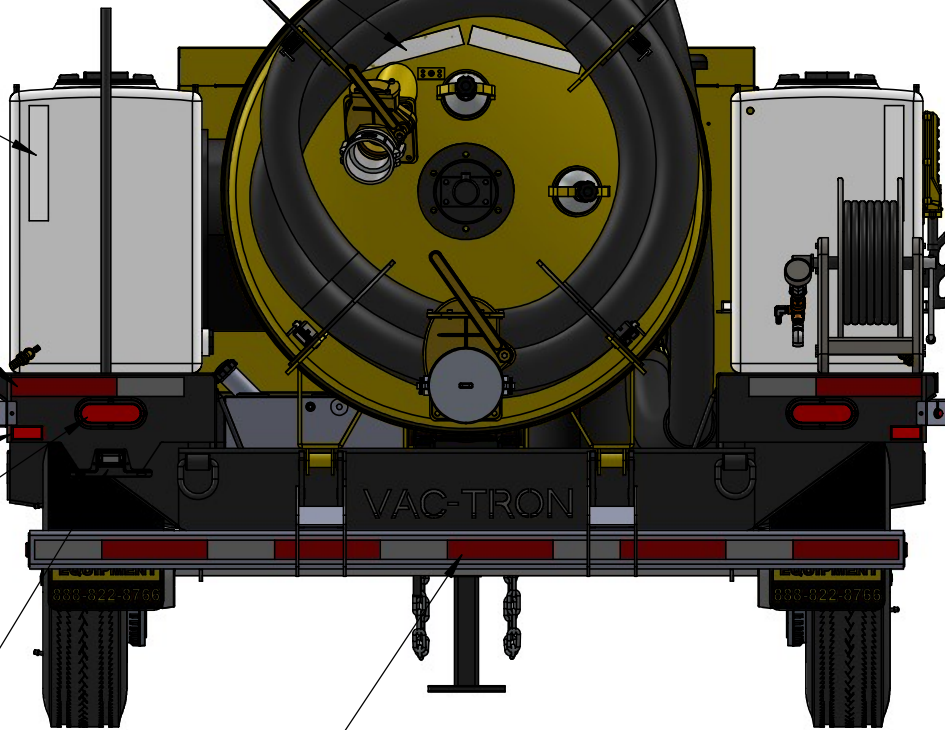
Rear Tail/Stop/Turn Signal  
Lamp (area 1)

License Plate  
Lamp (area 2)

Rear Identification  
Lamps (area 7)

Rear Upper Body  
Marking (area 9)

Rear Lower Body  
Marking (area 11)



D

C

B

A



**VAC-TRON EQUIPMENT LLC**

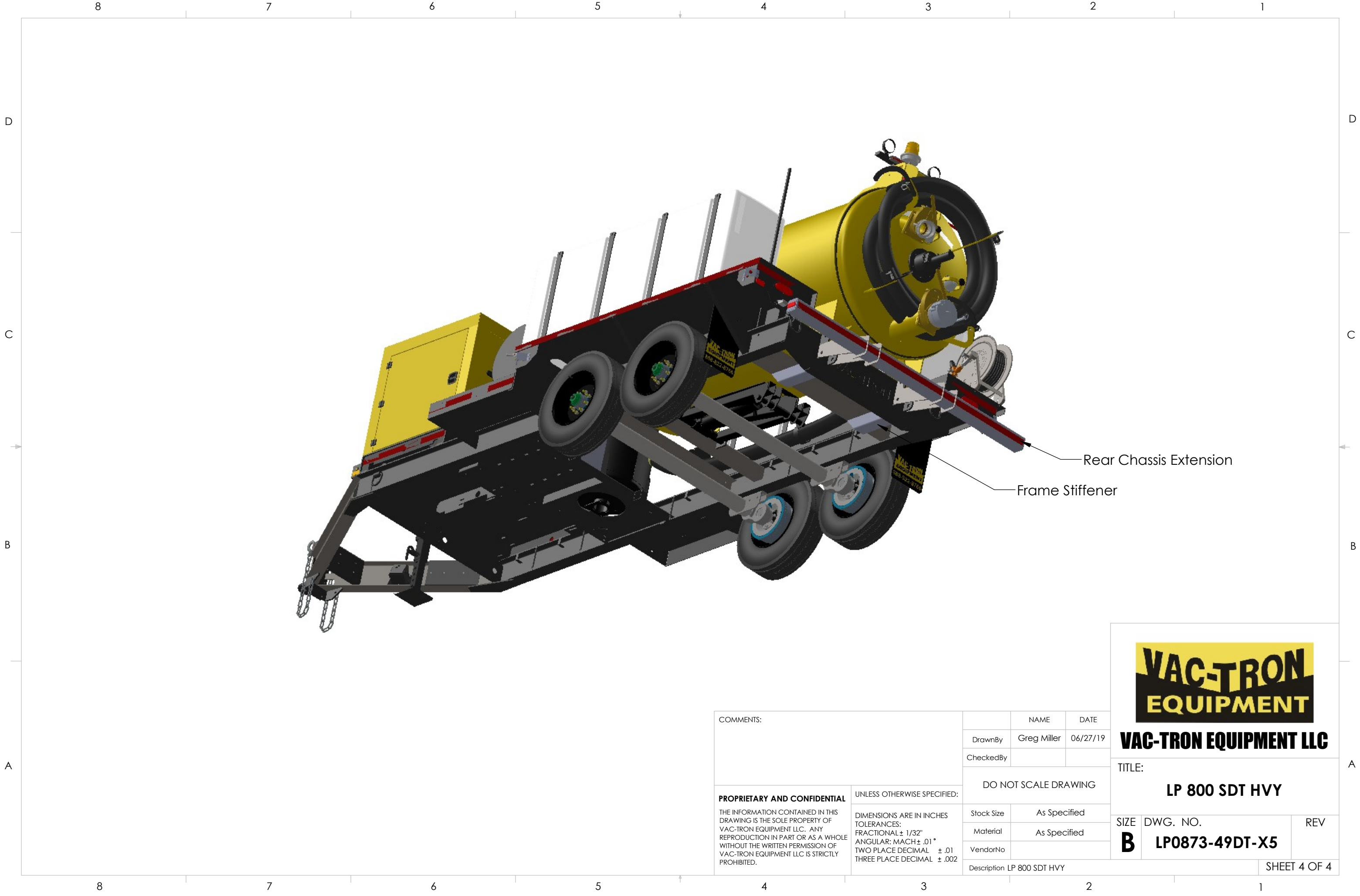
TITLE:  
**LP 800 SDT HVY**

SIZE DWG. NO. REV  
**B LP0873-49DT-X5**

SHEET 3 OF 4

|  |  |   |  |                            |  |   |                                   |     |
|--|--|---|--|----------------------------|--|---|-----------------------------------|-----|
| COMMENTS:  |  |   |  | NAME                       |  | DATE  |                                   |     |
|  |  | DrawnBy   |  | Greg Miller                |  | 06/27/19  |                                   |     |
|  |  | CheckedBy   |  |                            |  |   |                                   |     |
|  |  | DO NOT SCALE DRAWING  |  |                            |  |   |                                   |     |
| <b>PROPRIETARY AND CONFIDENTIAL</b><br><br>THE INFORMATION CONTAINED IN THIS DRAWING IS THE SOLE PROPERTY OF VAC-TRON EQUIPMENT LLC. ANY REPRODUCTION IN PART OR AS A WHOLE WITHOUT THE WRITTEN PERMISSION OF VAC-TRON EQUIPMENT LLC IS STRICTLY PROHIBITED. |  | UNLESS OTHERWISE SPECIFIED:<br><br>DIMENSIONS ARE IN INCHES<br>TOLERANCES:<br>FRACTIONAL ± 1/32"<br>ANGULAR: MACH ± .01 °<br>TWO PLACE DECIMAL    ± .01<br>THREE PLACE DECIMAL   ± .002 |  | Stock Size                 |  | As Specified  |                                   |     |
|  |  |   |  | Material                   |  | As Specified  |                                   |     |
|  |  |   |  | VendorNo                   |  |   |                                   |     |
|  |  |   |  | Description LP 800 SDT HVY |  |   |                                   |     |
|  |  |   |  | SHEET 3 OF 4               |  |   |                                   |     |
|  |  |   |  |                            |  | <div>EQUIPMENT</div><br><b>VAC-TRON EQUIPMENT LLC</b> |                                   |     |
|  |  |   |  |                            |  | TITLE:<br><br><b>LP 800 SDT HVY</b>                   |                                   |     |
|  |  |   |  |                            |  | SIZE<br><b>B</b>                                      | DWG. NO.<br><b>LP0873-49DT-X5</b> | REV |





|  |   |
|--|---|
| COMMENTS:  |   |
| <b>PROPRIETARY AND CONFIDENTIAL</b><br><br>THE INFORMATION CONTAINED IN THIS DRAWING IS THE SOLE PROPERTY OF VAC-TRON EQUIPMENT LLC. ANY REPRODUCTION IN PART OR AS A WHOLE WITHOUT THE WRITTEN PERMISSION OF VAC-TRON EQUIPMENT LLC IS STRICTLY PROHIBITED. | UNLESS OTHERWISE SPECIFIED:<br><br>DIMENSIONS ARE IN INCHES<br>TOLERANCES:<br>FRACTIONAL ± 1/32"<br>ANGULAR: MACH ± .01 °<br>TWO PLACE DECIMAL    ± .01<br>THREE PLACE DECIMAL   ± .002 |



**VAC-TRON EQUIPMENT LLC**

|                                 |                                   |     |
|---------------------------------|-----------------------------------|-----|
| TITLE:<br><b>LP 800 SDT HVY</b> |                                   |     |
| SIZE<br><b>B</b>                | DWG. NO.<br><b>LP0873-49DT-X5</b> | REV |