

# Work Instructions For Traverse Main Tail Pin Replacement

- Current State
  - If your trailer does not look like this please contact Fontaine Customer Service at 205-467-6171 Ext. 804



Step 1: Remove one of the snap rings on each pin with a pair of snap ring pliers

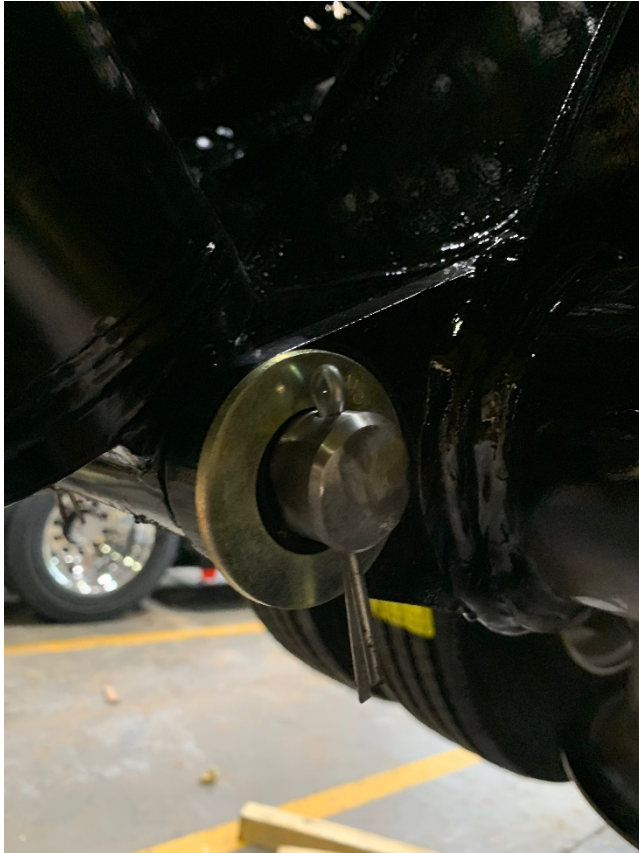


Step 2: Use the provided pin to drive the existing pin out of the main tail lug. After removing the existing pin, continue hammering in the new pin until it is properly holding the cylinder and has the same amount showing on each side.



- To help with accessibility you may raise the main tail as high as it will go but you must make sure it is properly held up to ensure the tail does not drop while doing service.

Step 3: Install washers and cotter pins on both sides of the lug to ensure securement on both cylinders.



Step 4: Bend all cotter pin tines as shown below.

