

RECALL: THIS MODIFICATION HAS TOP PRIORITY AND MUST BE PERFORMED IMMEDIATELY TO ENSURE CUSTOMER SAFETY

FUEL TANK INSERT INSPECTION AND SEALING

AFFECTED MODELS: 2015 and 2016 1290 SUPER ADVENTURE

RESTRICTIONS: AFFECTED MODELS ARE LINKED BY VIN IN KTM DEALER.NET

INITIAL INFORMATION:

KTM North America, Inc. has determined that a defect which relates to motor vehicle safety exists with certain 2015 and 2016 1290 SUPER ADVENTURE motorcycles pertaining to the insert on the fuel tank that is used for mounting the fuel tank cover. On affected units there is a possibility that the fuel tank cover mounting insert may leak. The insert is located in the seat area of the fuel tank where the fuel tank cover mounts (FIG. 1 and FIG. 2). To ensure the highest level of safety, performance, reliability and customer satisfaction, it is necessary to inspect this fuel tank insert for leakage and to perform one of the following three steps.

- Check the serial number range of the fuel tank to determine if it is in the affected range. If the serial number is not in the affected range then no further action is required. (see page 4.)
- If the fuel tank falls in the affected serial number range but no fuel leakage can be identified from the fuel tank insert shown in FIG. 1 and FIG. 2 then the dealer must install a specially designed fuel tank insert conversion kit which will seal the insert to prevent potential leakage.
- If fuel leakage is identified then the fuel tank must be replaced.

On affected motorcycles, during operation or while sitting still it is possible that fuel can seep or leak out of the fuel tank cover mounting insert. The presence of a leak could result in the possibility of damage or possible fire, which could cause injury or death to the rider or others.

The cause of the defect is due to nonconformities that could have occurred in the rotational molding process. During the manufacturing process the molded material did not reach the optimal temperature which resulted in an unbalanced distribution of materials around the threaded insert.

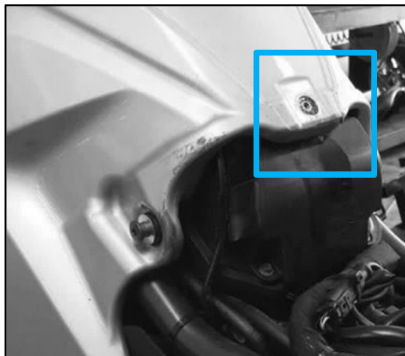


FIG. 1 - Overview with seat removed

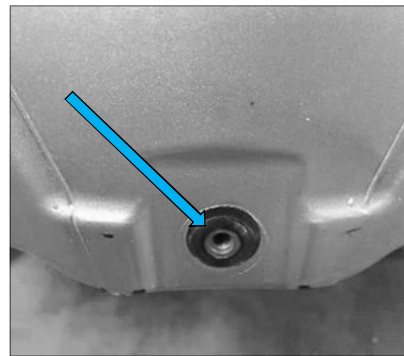


FIG. 2 - Detailed view

COPYRIGHT NOTICE: The user acknowledges that all components of this technical information are KTM's and/or third parties' copyright protected property. Alteration, assignment, distribution and reproduction are forbidden.

LIMITATION OF LIABILITY: The information included in or available through this technical information may include inaccuracies or errors. In no event shall KTM and/or its suppliers be liable for any damages whatsoever, arising out of or in connection with the use of this technical information. Please always refer to the KTM owners and repair manuals for proper instructions or contact the KTM Dealer Services Department.

KTM NORTH AMERICA, INC.

38429 Innovation Court // Murrieta, CA 92563
 1119 Milan Avenue // Amherst, OH 44001
 8701 Rue Samuel-Hatt // Chambly, QC J3L-6V4
 www.ktm.com



KTM is notifying all registered owners of affected motorcycles by mail. A copy of the customer letter is included in this bulletin. The customer should take the letter along with the affected motorcycle to an authorized KTM Dealer to have their fuel tank inspected to determine if the fuel tank is not affected, needs the insert conversion kit installed or if the fuel tank needs to be replaced.

This recall must only be performed by trained technicians with proper equipment. Dealers are not to send out parts to customers and should take every reasonable action to make sure the customer does not try to repair or perform the recall on their vehicle. Doing so is a violation of Federal law. Dealers are to properly record the repair of the recall, report and return parts to KTM.

Dealers must perform the fuel tank inspection on all affected motorcycles in their inventory prior to any customer delivery to determine if the fuel tank is not affected, needs the insert conversion kit installed or if the fuel tank needs to be replaced. Any affected 2015 and 2016 1290 SUPER ADVENTURE models received directly from KTM North America, Inc. require the inspection and repair to be performed prior to customer delivery. Affected units acquired through dealer transfers or trades must be remedied and checked in KTM Dealer.net to ensure and document that the repair has been performed.

Motorcycles that are affected must not be sold or operated until the inspection and repair has been performed as described in this bulletin. It is a violation of KTM North America, Inc. policy for an authorized KTM Dealer to deliver any affected units to customers before the procedure in this bulletin has been performed.

KTM must report to the federal government on a regular basis how many units have been inspected and repaired during this campaign. Be sure to submit your warranty request for reimbursement on every unit repaired to ensure accurate compliance numbers.

SAFETY ADVICE:



Danger

Fire hazard: Fuel is highly flammable.

- Never refuel the vehicle near naked flames or lit cigarettes, and always switch off the engine. Be careful that no fuel is spilled, especially on hot vehicle components. Wipe up any spilled fuel immediately.
- The fuel in the fuel tank expands when heated and may leak out if the tank is overfilled. Note the specifications on filling the fuel tank.



Warning

Danger of poisoning: Fuel is toxic and poses a risk to your health.

- ➔ Do not allow fuel to come in contact with your skin, eyes, or clothing. Do not inhale fuel vapors. If contact occurs with the eyes, rinse with water immediately and contact a physician. Immediately clean contaminated areas on the skin with soap and water. If fuel is swallowed, contact a physician immediately. Change clothing that has been contaminated with fuel. Store fuel correctly in a suitable canister and keep it out of the reach of children.



Warning

Environmental hazard: Improper handling of fuel is a danger to the environment.

- ➔ Do not allow fuel to get into the ground water, the ground, or the sewage system.

COPYRIGHT NOTICE: The user acknowledges that all components of this technical information are KTM's and/or third parties' copyright protected property. Alteration, assignment, distribution and reproduction are forbidden.

LIMITATION OF LIABILITY: The information included in or available through this technical information may include inaccuracies or errors. In no event shall KTM and/or its suppliers be liable for any damages whatsoever, arising out of or in connection with the use of this technical information. Please always refer to the KTM owners and repair manuals for proper instructions or contact the KTM Dealer Services Department.

KTM NORTH AMERICA, INC.

38429 Innovation Court // Murrieta, CA 92563
 1119 Milan Avenue // Amherst, OH 44001
 8701 Rue Samuel-Hatt // Chambly, QC J3L-6V4
 www.ktm.com

PROCEDURE FOR REPAIR:**Preparation for repair**

(Please reference the repair manual for more detailed instructions on fuel tank removal and installation)

1. Remove the rider and passenger seat.
2. Drain the fuel. We recommend using one of the following two options for draining the fuel from the tank.
 - A. Use a fuel tank draining tool like a fuel transfer pump that is designed for draining fuel.
 - B. Or drain the fuel by using the fuel pump pressure testing tool p.n. 61029093000. Follow the steps in the bullet points below to drain the fuel using the fuel pump pressure testing tool along with the diagnostic tool (FIG. 3).
 - Disconnect the fuel pump hose connector, attach to the fuel pump pressure testing tool.
 - Remove the threaded reduction adapter as shown in FIG. 3 and insert adapter holder and hose into a suitable fuel container.
 - Connect the X_Charge Pro battery maintainer and set it to “backup mode”.
 - Switch the ignition “On” and using the diagnostic tool with the motorcycle, access the MCU ECU and perform the Actuator Test for the fuel pump. During this time you can allow it to run and drain, continue the repair removal steps below until the fuel tank is empty then stop the test.
3. Remove the engine protection bars.
4. Remove the front side cover, remove the fuel tank cover.
5. Remove the mask spoiler.
6. Close the petcocks to prevent fuel spillage, disconnect the fuel hose and electrical connections.
7. Remove the fuel tank.

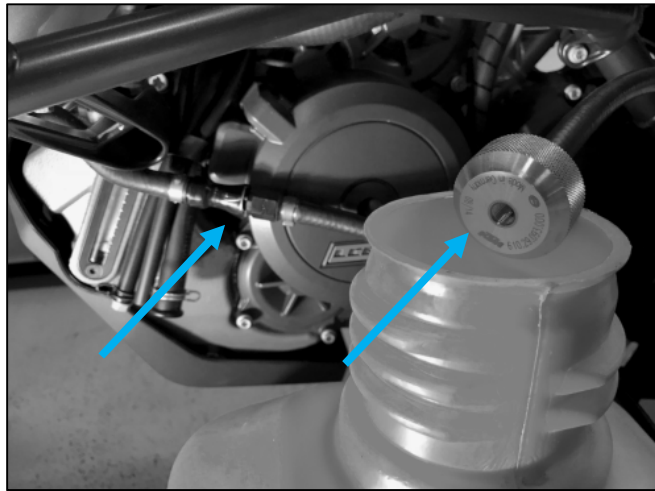


FIG. 3

COPYRIGHT NOTICE: The user acknowledges that all components of this technical information are KTM's and/or third parties' copyright protected property. Alteration, assignment, distribution and reproduction are forbidden.

LIMITATION OF LIABILITY: The information included in or available through this technical information may include inaccuracies or errors. In no event shall KTM and/or its suppliers be liable for any damages whatsoever, arising out of or in connection with the use of this technical information. Please always refer to the KTM owners and repair manuals for proper instructions or contact the KTM Dealer Services Department.

KTM NORTH AMERICA, INC.

38429 Innovation Court // Murrieta, CA 92563
1119 Milan Avenue // Amherst, OH 44001
8701 Rue Samuel-Hatt // Chambly, QC J3L-6V4
www.ktm.com

8. Begin the inspection of the fuel tank.
9. Check the serial number and the production date that is marked on the fuel tank as shown in FIG. 4. Use the table shown below to determine if the fuel tank is affected.
 - If the serial number is less than 4,000 or more than 10,491 then the fuel tank is not affected. Then install the components in reverse order to complete the job.
 - If the serial number falls within the range of 4,000 to 10,491 then the tank is affected and you must proceed with one of the following two steps:
 - A. **If** fuel leakage is identified from the insert shown on page 1 in FIG 1 and 2, the fuel tank must be replaced. Use the action code 07_936115_01 for this.
 - B. **If no** fuel leakage can be identified from the insert install the conversion kit as described in the following steps. Use the action code 07_936115_02 for this.

Note: The warranty claim will not be credited until after the replaced fuel tank has been received and checked the KTM Warranty Department.

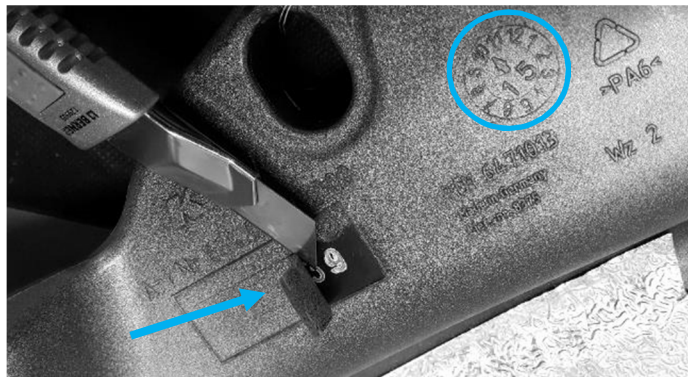


FIG. 4 - Check the serial number for the fuel tank

Serial number range	Work to be carried out
Falls within 4,000 - ...10,491	Work through points A and B (shown above)
Less than 4,000 or More than 10,491	The fuel tank is not affected. Install all components in reverse order. Use Action Code 07_936115_00 when submitting the claim.

▼ Failure descriptions

Dealer failure description	Customer failure description
Serial number XXXXX Production date XX 20XX	

FIG. 5 - Write down the the serial number and production date so it can be entered on the claim.

Note: The serial number and production date must be entered in the warranty claim for it to be processed.

COPYRIGHT NOTICE: The user acknowledges that all components of this technical information are KTM's and/or third parties' copyright protected property. Alteration, assignment, distribution and reproduction are forbidden.

LIMITATION OF LIABILITY: The information included in or available through this technical information may include inaccuracies or errors. In no event shall KTM and/or its suppliers be liable for any damages whatsoever, arising out of or in connection with the use of this technical information. Please always refer to the KTM owners and repair manuals for proper instructions or contact the KTM Dealer Services Department.

KTM NORTH AMERICA, INC.

38429 Innovation Court // Murrieta, CA 92563
 1119 Milan Avenue // Amherst, OH 44001
 8701 Rue Samuel-Hatt // Chambly, QC J3L-6V4
 www.ktm.com



Conversion kit installation

10. Position the fuel tank at working height (on a workbench).
11. Recut the threaded insert using the thread cutter (M5x0.8) beyond the end of the insert at the bottom of the tank (FIG. 6 & 7).



FIG. 6

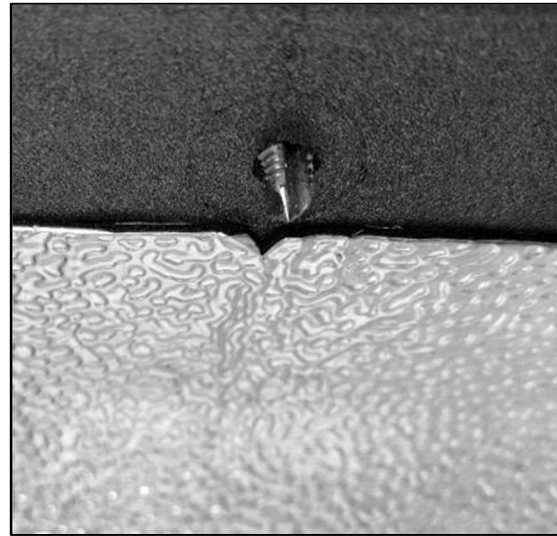


FIG. 7

12. Rotate the fuel tank. If necessary trim off the heat shielding (FIG. 8).

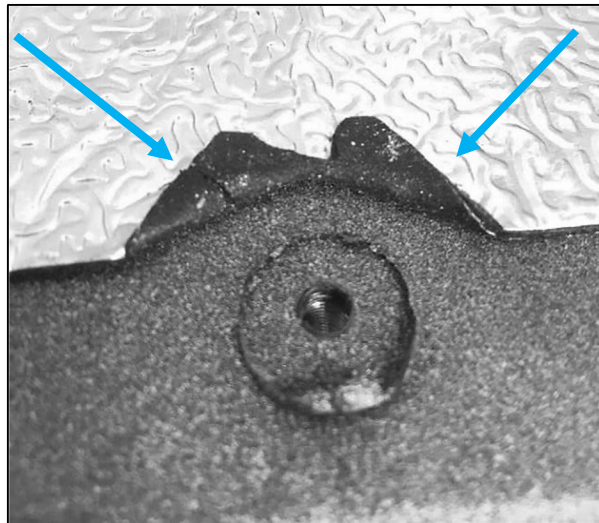


FIG. 8

Attention: The material is very soft. If incisions are made too deep the tank may need to be replaced. Contact Dealer Services if the tank is damaged from incisions for replacement approval.

COPYRIGHT NOTICE: The user acknowledges that all components of this technical information are KTM's and/or third parties' copyright protected property. Alteration, assignment, distribution and reproduction are forbidden.

LIMITATION OF LIABILITY: The information included in or available through this technical information may include inaccuracies or errors. In no event shall KTM and/or its suppliers be liable for any damages whatsoever, arising out of or in connection with the use of this technical information. Please always refer to the KTM owners and repair manuals for proper instructions or contact the KTM Dealer Services Department.

KTM NORTH AMERICA, INC.

38429 Innovation Court // Murrieta, CA 92563
1119 Milan Avenue // Amherst, OH 44001
8701 Rue Samuel-Hatt // Chambly, QC J3L-6V4
www.ktm.com



13. Remove the burrs by placing a knife blade down flat (FIG. 9).

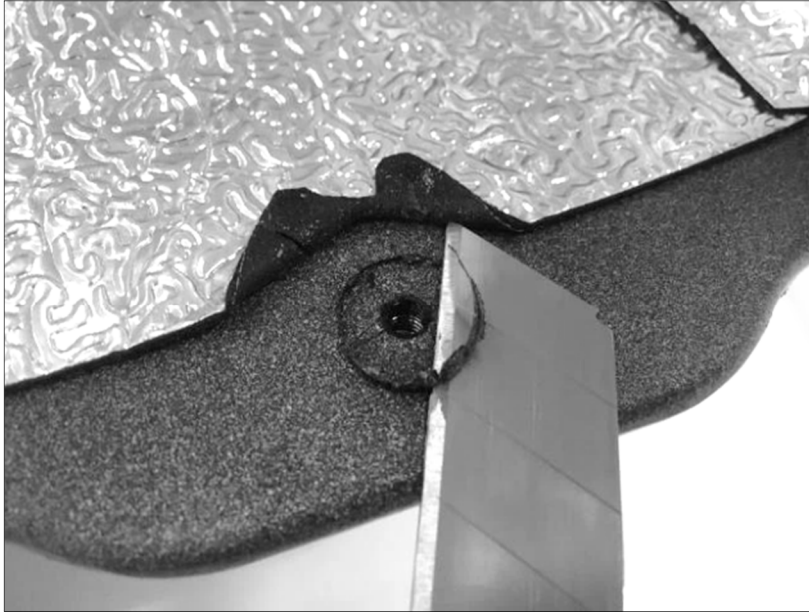


FIG. 9

14. Clean the thread on both sides with compressed air and degrease.
- Drip high-strength screw thread locker (Loctite™ 2701) into the hole on the tank bottom (blue arrow, Fig. 10).

Note: The screw thread locker must not be applied to the thread of the screw, since if it is mixed with the “Hylomar™” sealant, the effect of both components can be impaired.

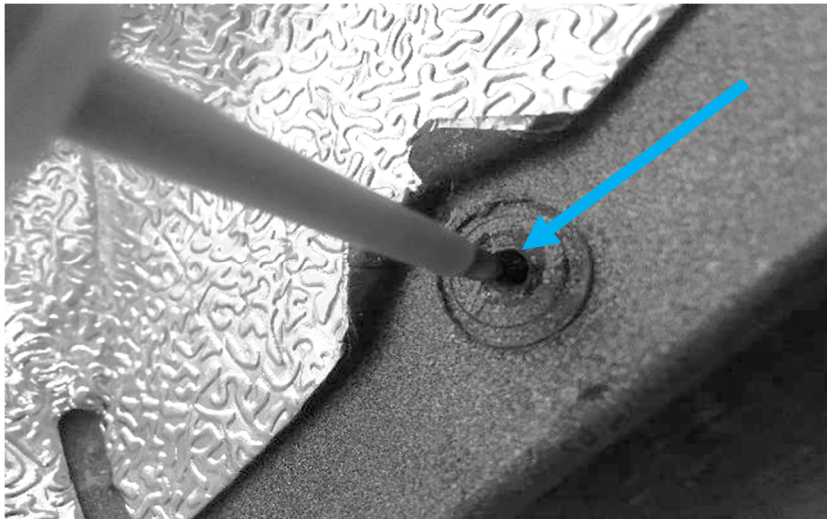


FIG. 10

COPYRIGHT NOTICE: The user acknowledges that all components of this technical information are KTM's and/or third parties' copyright protected property. Alteration, assignment, distribution and reproduction are forbidden.

LIMITATION OF LIABILITY: The information included in or available through this technical information may include inaccuracies or errors. In no event shall KTM and/or its suppliers be liable for any damages whatsoever, arising out of or in connection with the use of this technical information. Please always refer to the KTM owners and repair manuals for proper instructions or contact the KTM Dealer Services Department.

KTM NORTH AMERICA, INC.

38429 Innovation Court // Murrieta, CA 92563
1119 Milan Avenue // Amherst, OH 44001
8701 Rue Samuel-Hatt // Chambly, QC J3L-6V4
www.ktm.com

15. **Note:** Ensure that no screw thread locker is present on the surface marked in blue (FIG. 11). Another cleaning may be necessary.

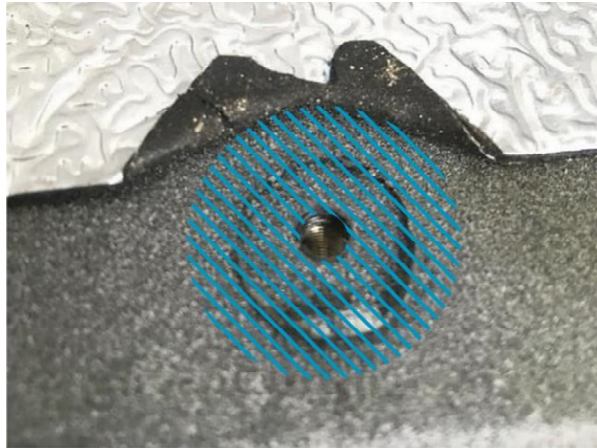


FIG. 11

16. Using the “Hylomar™” applicator apply the sealant to the bottom (FIG. 12).

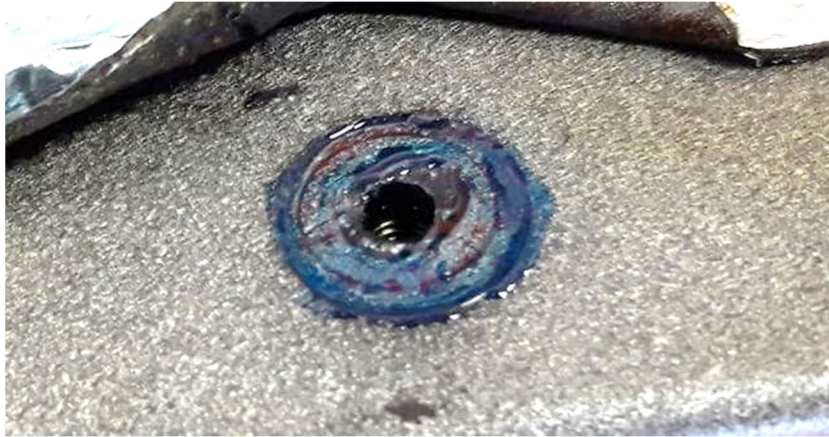


FIG. 12

COPYRIGHT NOTICE: The user acknowledges that all components of this technical information are KTM's and/or third parties' copyright protected property. Alteration, assignment, distribution and reproduction are forbidden.

LIMITATION OF LIABILITY: The information included in or available through this technical information may include inaccuracies or errors. In no event shall KTM and/or its suppliers be liable for any damages whatsoever, arising out of or in connection with the use of this technical information. Please always refer to the KTM owners and repair manuals for proper instructions or contact the KTM Dealer Services Department.

KTM NORTH AMERICA, INC.

38429 Innovation Court // Murrieta, CA 92563
1119 Milan Avenue // Amherst, OH 44001
8701 Rue Samuel-Hatt // Chambly, QC J3L-6V4
www.ktm.com

17. Screw in the screw from the conversion kit (blue box) by hand using the included 2.5 mm socket. Then finish tightening it with a torque wrench to 2 Nm / 17.70 in-lb (FIG. 13).

Attention: Insert the hexagon socket all of the way.

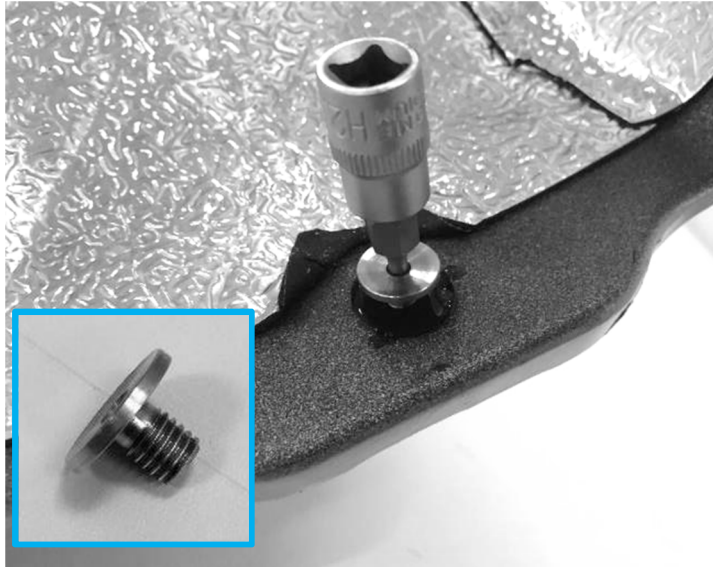


FIG. 13

18. Rotate the fuel tank to the normal position.

- Check the threaded insert on the tank top with a flashlight (FIG. 14):

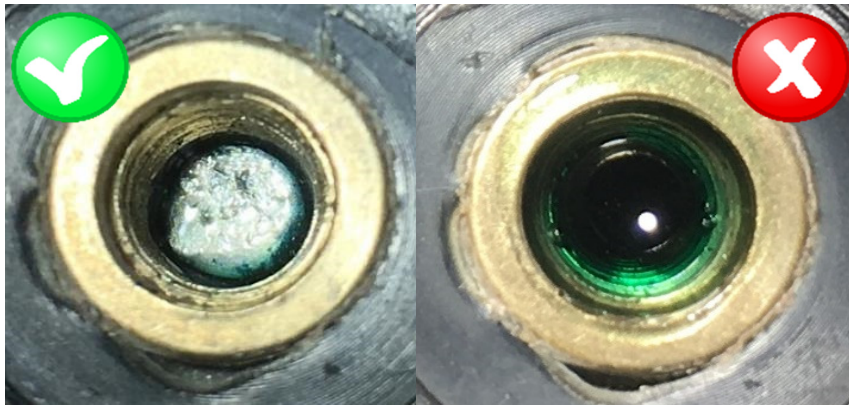


FIG. 14: left photo: free of threadlocker / right photo: screw thread locker residue

- ➔ Is the hole free (FIG. 14 left) of superfluous screw thread locker? YES -> Perform installation of the double screw in the next step.
- ➔ If there is a residual amount of screw thread locker in the hole (FIG. 14 right), this residue must be removed with a clean cloth.

Note: The applicator cannot be used for cleaning, since the adhesive sealant impairs the effect of the coated screw thread locker of the double screw.

COPYRIGHT NOTICE: The user acknowledges that all components of this technical information are KTM's and/or third parties' copyright protected property. Alteration, assignment, distribution and reproduction are forbidden.

LIMITATION OF LIABILITY: The information included in or available through this technical information may include inaccuracies or errors. In no event shall KTM and/or its suppliers be liable for any damages whatsoever, arising out of or in connection with the use of this technical information. Please always refer to the KTM owners and repair manuals for proper instructions or contact the KTM Dealer Services Department.

KTM NORTH AMERICA, INC.

38429 Innovation Court // Murrieta, CA 92563
 1119 Milan Avenue // Amherst, OH 44001
 8701 Rue Samuel-Hatt // Chambly, QC J3L-6V4
 www.ktm.com



19. Screw in the double screw by hand **without** sealant and tighten using a torque wrench to 4 Nm / 35.4 in-lb (FIG. 15).

- ➔ **Attention:** Insert the hexagon socket all the way.
- ➔ Install the side of screw with thread locker and rubber seal to the side of the tank.
- ➔ Do not use sealant

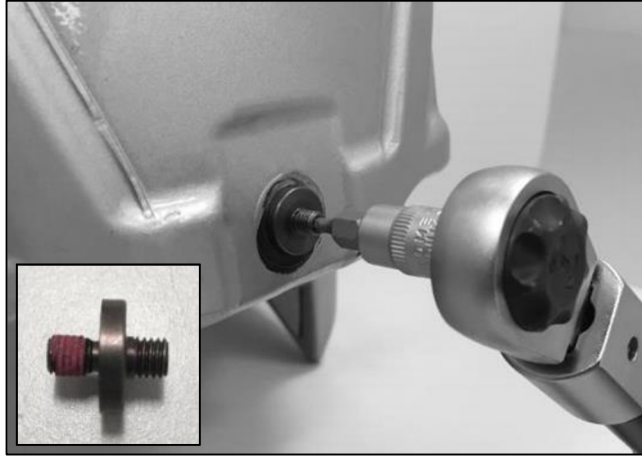


FIG. 15

20. Take a photo of installed insert conversion kit and attach it to the warranty claim for proof of installation.

21. Mount the fuel tank on motorcycle, connect the fuel line and add fuel.

22. Open the fuel petcocks.

23. Check the connection lines for tightness.

24. Mount the tank cover with new cap nut (FIG. 16) and tighten it with a torque wrench to 3.5 Nm / 31 in-lb.

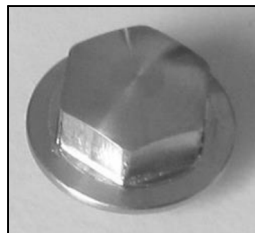


FIG. 16

Component	Screw	Torque	Remark
Screw, underside	M5	2 Nm / 17.70 in-lb	with Hylomar™
Double screw, top side	M5	4 Nm / 35.4 in-lb	without Hylomar™
Cap nut	M5	3.5 Nm / 31 in-lb	

COPYRIGHT NOTICE: The user acknowledges that all components of this technical information are KTM's and/or third parties' copyright protected property. Alteration, assignment, distribution and reproduction are forbidden.

LIMITATION OF LIABILITY: The information included in or available through this technical information may include inaccuracies or errors. In no event shall KTM and/or its suppliers be liable for any damages whatsoever, arising out of or in connection with the use of this technical information. Please always refer to the KTM owners and repair manuals for proper instructions or contact the KTM Dealer Services Department.

KTM NORTH AMERICA, INC.

38429 Innovation Court // Murrieta, CA 92563
 1119 Milan Avenue // Amherst, OH 44001
 8701 Rue Samuel-Hatt // Chambly, QC J3L-6V4
 www.ktm.com



Install all remaining components in reverse order according to the repair manual:

25. Install the mask spoiler.
26. Install the front side cover.
27. Install the crash bar.
28. Mount the rider and passenger seat.

Finishing work

29. Carry out a function check by means of a test ride.
30. Complete visual check of fuel system again to ensure there are no leaks.

PARTS ORDERING:

1 QTY. 60407013010 Fuel tank conversion kit

Conversion kit overview (FIG. 17).

- Note the storage temperature for the Hylomar™ sealant: 41 °F to 95 °F



FIG. 17

VEHICLE LOCK INFORMATION:

Unsold motorcycles that are linked to this recall are locked in the vehicle history. The vehicle lock prevents the motorcycle from being retailed to a customer before the recall is performed. In order to unlock the vehicle you must perform the recall and then submit a TI claim. After the TI claim is accepted it will be possible to unlock and retail the motorcycle.

WARRANTY INPUT INFORMATION:

This Technical Bulletin only affects certain VIN numbers! Please check the VIN by performing a Motorcycle History search in KTM Dealer.net to determine if it's affected. If the motorcycle is affected you will see a link to the bulletin and its repair status in the history results. KTM North America will not warranty units whose VIN numbers are not linked as this bulletin does not apply to them. It is the responsibility of the dealer to determine if the unit requires this update by checking the vehicle history and understanding the instructions provided by this bulletin.

Please note that when entering a warranty claim on an affected model, you must perform a vehicle history search, expand the **Technical information** window and click the orange arrow on the right side of the corresponding bulletin message.

You can now choose the TI Number from the list. The TI number for this procedure is according to the repairs performed and listed in the warranty claim input information; click **Continue with selected action code**.

COPYRIGHT NOTICE: The user acknowledges that all components of this technical information are KTM's and/or third parties' copyright protected property. Alteration, assignment, distribution and reproduction are forbidden.

LIMITATION OF LIABILITY: The information included in or available through this technical information may include inaccuracies or errors. In no event shall KTM and/or its suppliers be liable for any damages whatsoever, arising out of or in connection with the use of this technical information. Please always refer to the KTM owners and repair manuals for proper instructions or contact the KTM Dealer Services Department.

KTM NORTH AMERICA, INC.

38429 Innovation Court // Murrieta, CA 92563
 1119 Milan Avenue // Amherst, OH 44001
 8701 Rue Samuel-Hatt // Chambly, QC J3L-6V4
 www.ktm.com

The Warranty Claim is automatically entered for you, including parts & labor. You must enter additional information in the required fields marked with an asterisk “*” before submitting the claim to KTM. The flat rate time for this repair is based on the action performed and provided in minutes.

If you replaced the fuel tank it must be returned to the KTM Warranty Department at 1119 Milan Ave. Amherst, OH 44001. Warranty Claims will only be processed after the replaced parts have been received. Parts must be tagged and include a copy of the claim.

If you installed the fuel tank insert conversion kit attach the photo to the warranty claim for proof of installation.

If you need additional tags or labels please order using the following part numbers:

Warranty Part ID Tag p.n. U6999093

FedEx Prepaid Return Label p.n. U6999094

Warranty type:
TI warranty
Assembly group:
07 – Tank
Damage code:
440 – Leakage
Part causing failure:
60407013044BGA – fuel tank cpl.
Action code, parts, labor time:
Action code: 07_936115_00 – fuel tank checked
Labor time: 55 minutes
Parts: None
Action code: 07_936115_01 – exchange of fuel tank
Labor time: 65 minutes
Parts: 1 unit #60407013044BGA – fuel tank
1 unit #61007089000 – O-ring set for fuel pump
1 unit #60307008190 – fuel tank cap seal
Action code: 07_936115_02 – retrofitting the fuel tank
Labor time: 65 minutes
Parts: 1 unit #60407013010 – fuel tank conversion kit
Are stock items affected: NO

COPYRIGHT NOTICE: The user acknowledges that all components of this technical information are KTM's and/or third parties' copyright protected property. Alteration, assignment, distribution and reproduction are forbidden.

LIMITATION OF LIABILITY: The information included in or available through this technical information may include inaccuracies or errors. In no event shall KTM and/or its suppliers be liable for any damages whatsoever, arising out of or in connection with the use of this technical information. Please always refer to the KTM owners and repair manuals for proper instructions or contact the KTM Dealer Services Department.

KTM NORTH AMERICA, INC.

38429 Innovation Court // Murrieta, CA 92563
 1119 Milan Avenue // Amherst, OH 44001
 8701 Rue Samuel-Hatt // Chambly, QC J3L-6V4
 www.ktm.com



IMPORTANT SAFETY RECALL NOTICE

Affected VIN: «Vin»
 «PdiFirstName» «PdiLastName»
 «PdiAddress1»
 «PdiCity», «PdiProvince» «PdiPostalCode»
 «PdiCity», «PdiProvince» «PdiPostalCode»

2/xx/2019

RE: Affected models: 2015 and 2016 1290 Super Adventure

Dear KTM Customer,

This notice is sent to you in accordance with the requirements of the National Traffic and Motor Vehicle Safety Act. KTM North America, Inc. has determined that a defect which relates to motor vehicle safety exists in certain model year 2015 and 2016 1290 Super Adventure motorcycles. To ensure the highest level of safety, performance, reliability and customer satisfaction, it is necessary to have the insert on the fuel tank that is used to mount the fuel tank cover inspected for leakage. The insert is located in the seat area of the fuel tank where the fuel tank cover mounts. This work must be performed by an authorized KTM Dealer and will be free of charge.

The dealership will inspect the fuel tank insert for leakage and perform one of the following three steps:

- Check the serial number range of the fuel tank to determine if it is in the affected range. If the serial number is not in the affected range then no further action is required. The tank must be removed to check the serial number.
- If the fuel tank falls in the affected serial number range but no fuel leakage can be identified from the fuel tank insert then the dealer must install a specially designed fuel tank insert conversion kit which will seal the insert to prevent potential leakage.
- If fuel leakage is identified then the fuel tank must be replaced.

On affected motorcycles, during operation or while sitting still it is possible that fuel can seep or leak out of the fuel tank cover mounting insert. The presence of a leak could result in the possibility of damage or possible fire, which could cause injury or death to the rider or others.

The cause of the defect is due to nonconformities that could have occurred in the rotational molding process. During the manufacturing process the molded material did not reach the optimal temperature which resulted in an unbalanced distribution of materials around the threaded insert. To remedy this defect, the fuel tank must be inspected to determine one of the following: if the fuel tank is not affected, needs to have the new specially designed fuel tank insert conversion kit installed or if the fuel tank needs to be replaced.

Please contact your authorized KTM Dealer (log onto www.ktm.com for a complete dealer listing) as soon as possible to arrange having your fuel tank inspected to determine what steps need to be performed. It is suggested that you call your local authorized KTM Dealer to make an appointment to have the recall repair performed. The replacement procedure will take approximately 1 hour if the fuel tank requires the installation of the specially designed fuel tank insert conversion kit. If the fuel tank needs to be replaced the dealer will need to order a new fuel tank which will increase repair time. It also may be necessary to leave your motorcycle with the dealer for a longer period of time depending on their work schedule. Please present a copy of this letter along with your motorcycle to your local authorized KTM dealer. There will be no charge for this service.

If you have any questions related to the content of this letter, please contact KTM North America, Inc. Customer Relations at (888) 985-6090 for assistance. Furthermore, you may write the Administrator, National Highway Traffic Safety Administration, 1200 New Jersey Avenue, S.E., Washington, DC 20590 or call 1-888-327-4236 (TTY: 1-800-424-9153); or go to <http://www.safercar.gov>

If you have sold, traded or no longer own this motorcycle, it is important for the safety of the current owner that you inform KTM North America, Inc., of current ownership or unknown ownership status by returning the second page of this letter in the enclosed self-addressed prepaid postage envelope.

We apologize for any inconvenience and want to assure you that our commitment together with all KTM

COPYRIGHT NOTICE: The user acknowledges that all components of this technical information are KTM's and/or third parties' copyright protected property. Alteration, assignment, distribution and reproduction are forbidden.

LIMITATION OF LIABILITY: The information included in or available through this technical information may include inaccuracies or errors. In no event shall KTM and/or its suppliers be liable for any damages whatsoever, arising out of or in connection with the use of this technical information. Please always refer to the KTM owners and repair manuals for proper instructions or contact the KTM Dealer Services Department.

KTM NORTH AMERICA, INC.

38429 Innovation Court // Murrieta, CA 92563
 1119 Milan Avenue // Amherst, OH 44001
 8701 Rue Samuel-Hatt // Chambly, QC J3L-6V4
www.ktm.com





Dealers is to provide you with the highest level of service, support and customer satisfaction.

Best Regards,
 Dealer Services Department
 KTM North America, Inc.

Customer Record Update Form

NOTICE: If you no longer own this motorcycle or have had an address change please complete the following portion of this letter and return to KTM in the enclosed self-addressed envelope.

Please complete and return this portion to KTM if ownership of the referenced motorcycle has changed. Please print legibly.

The new address is or I have sold the motorcycle to:

New owner's name _____ «Vin»

Address _____ «PdiFirstName» «PdiLastName»

City _____ State _____ Zip _____ «PdiAddress1»

Phone number _____ «PdiCity»,«PdiProvince» «PdiPostalCode»

Email _____

Date of Resale _____

Returning this form will help us to contact the current owner and will enable us to update our records so you can be assured not to receive notifications for this motorcycle in the future. Thank you.

COPYRIGHT NOTICE: The user acknowledges that all components of this technical information are KTM's and/or third parties' copyright protected property. Alteration, assignment, distribution and reproduction are forbidden.

LIMITATION OF LIABILITY: The information included in or available through this technical information may include inaccuracies or errors. In no event shall KTM and/or its suppliers be liable for any damages whatsoever, arising out of or in connection with the use of this technical information. Please always refer to the KTM owners and repair manuals for proper instructions or contact the KTM Dealer Services Department.

KTM NORTH AMERICA, INC.

38429 Innovation Court // Murrieta, CA 92563
 1119 Milan Avenue // Amherst, OH 44001
 8701 Rue Samuel-Hatt // Chambly, QC J3L-6V4
 www.ktm.com

