

January 31, 2019

Version 2

Safety Recall: 2015-17 Accord V6 Fuel Pump

Supersedes 19-016, dated January 30, 2019, to revise the sections highlighted in **yellow**.

AFFECTED VEHICLES

Year	Model	Trim	VIN Range
2015-17	Accord	V6	Check the iN VIN status for eligibility.

REVISION SUMMARY

- Under AFFECTED VEHICLES, the 2017 Accord was added.
- Under WARRANTY CLAIM INFORMATION, PCM idle learn and CKP pattern - clear/learn were added.
- Under SOFTWARE INFORMATION, the 2017 Accord and an Emission Type column was added.
- Under PARTS INFORMATION, an Emission Type column was added.
- Under REPAIR PROCEDURE A, the PCM idle learn and CKP pattern - clear/learn procedures were added.
- Under REPAIR PROCEDURE B, the PCM idle learn and CKP pattern - clear/learn procedures were added.

BACKGROUND

Under certain driving conditions using fuel with high sodium content and with other ambient conditions present, the fuel pump may fail to provide enough fuel to the engine, leading to a stall.

CUSTOMER NOTIFICATION

Owners of affected vehicles will be sent a notification of this campaign.

Do an iN VIN status inquiry to make sure the vehicle is shown as eligible.

Some vehicles affected by this campaign may be in your used vehicle inventory.

Failure to repair a vehicle subject to a recall or campaign may subject your dealership to claims or lawsuits from the customer or anyone else harmed as a result of such failure. To see if a vehicle in inventory is affected by this safety recall, do a VIN status inquiry before selling it.

CORRECTIVE ACTION

Check if the vehicle's on-board snapshot shows an engine stall stored. If an engine stall is identified, update the PGM-FI and replace the low pressure fuel pump module. If no engine stall is identified, update the PGM-FI only.

CUSTOMER INFORMATION: The information in this bulletin is intended for use only by skilled technicians who have the proper tools, equipment, and training to correctly and safely maintain your vehicle. These procedures should not be attempted by "do-it-yourselfers," and you should not assume this bulletin applies to your vehicle, or that your vehicle has the condition described. To determine whether this information applies, contact an authorized Honda automobile dealer.

WARRANTY CLAIM INFORMATION

Operation Number	Description	Flat Rate Time	Defect Code	Symptom Code	Template ID	Failed Part Number
2235A7	Procedure A - Update the PGM-FI. (Includes checking the on-board snapshot, idle learn and CKP pattern clear/learn).	0.4 hr	6GS00	N3X00	A19016A	17045-T2B-A01
2235A8	Procedure B - Update the PGM-FI, and replace the low pressure fuel pump module. Includes idle learn and CKP pattern clear/learn. (P/N 17045-T2B-A01).	0.9 hr	6GS00	N3X00	A19016B	17045-T2B-A01
2235A8	Procedure B - Update the PGM-FI, and replace the low pressure fuel pump module. Includes idle learn and CKP pattern clear/learn. (P/N 17045-T2B-L01).	0.9 hr	6GS00	N3X00	A19016C	17045-T2B-A01

Skill Level: Repair Technician

SOFTWARE INFORMATION

NOTE

Unnecessary or incorrect repairs resulting from a failure to update the i-HDS are not covered under warranty.

i-HDS Software Version: **1.004.060 or later**

J2534 Software Information:

- PC Application Version **1.1.0.6 or later**
- Database update **27-DEC-2018 or later**

Before beginning the repair, make sure that both the i-HDS and J2534 software are updated as listed above.

Do only the update listed in this service bulletin.

For more information about updating the i-HDS, the MVCI, and vehicle systems, refer to Service Bulletin 01-023, *Updating Control Units/Modules*.

Year/Model	Emission Type	Software System	Program ID (or later)	Program P/N (or later)
2015 Accord EX-L 4 Door A/T	KA	PGM-FI	G0A170	37805-5G0-A17
2015 Accord Touring 4 Door A/T	KA	PGM-FI	G0A270	37805-5G0-A27
2015 Accord EX-L 4 Door A/T	KL	PGM-FI	G1L160	37805-5G1-L16

Year/Model	Emission Type	Software System	Program ID (or later)	Program P/N (or later)
2015 Accord Touring 4 Door A/T	KL	PGM-FI	G1L260	37805-5G1-L26
2015 Accord EX-L 2 Door A/T	KA	PGM-FI	G0A370	37805-5G0-A37
2015 Accord EX-L 2 Door M/T	KA	PGM-FI	G2A150	37805-5G2-A15
2016-17 Accord EX-L 2 Door M/T	KA	PGM-FI	G2A240	37805-5G2-A24
2016-17 Accord EX-L 2 Door With Honda Sensing A/T	KA	PGM-FI	G0A460	37805-5G0-A46
2016-17 Accord EX-L 2 Door A/T	KA	PGM-FI	G0A960	37805-5G0-A96
2016-17 Accord EX-L and Touring 4 Door A/T	KL	PGM-FI	G1L860	37805-5G1-L86
2016-17 Accord EX-L 4 Door A/T	KL	PGM-FI	G1L060	37805-5G1-L06
2016-17 Accord EX-L 4 Door A/T	KA	PGM-FI	G0A060	37805-5G0-A06
2016-17 Accord EX-L and Touring 4 Door A/T	KA	PGM-FI	G0A870	37805-5G0-A87

PARTS INFORMATION

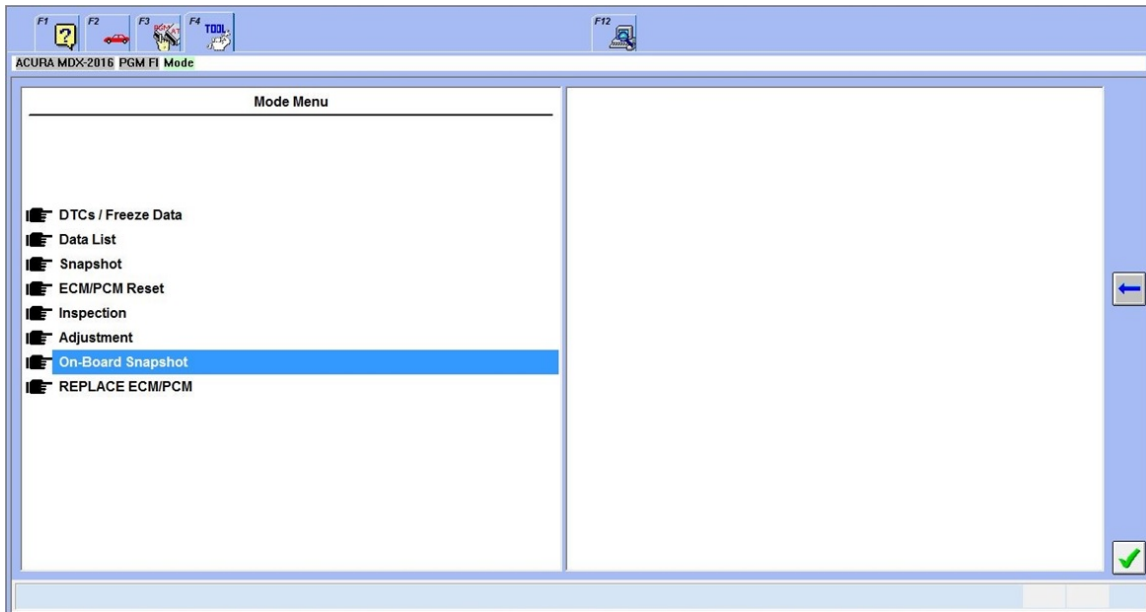
NOTE

The expected failure rate of the fuel pump is very low. Only order the fuel pump and retainer if there is an Engine stall 2 in the on-board snapshot. **Do not** order for inventory.

Part Name	Emission Type	Part Number	Quantity
Low pressure fuel pump module	KA	17045-T2B-A01	1
	KL	17045-T2B-L01	

INSPECTION

1. Connect the i-HDS to the vehicle, and turn the ignition to ON.
2. Select **PGM-FI, Mode Menu**, then **On-Board Snapshot**.

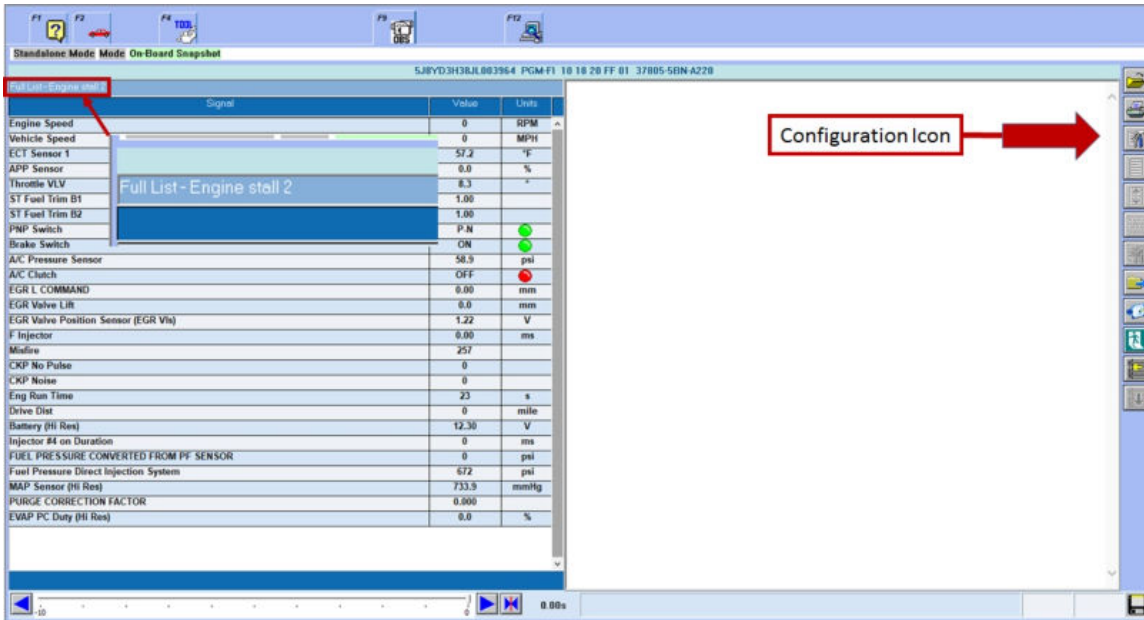


3. Select the on-board snapshot titled, **Full List - Engine stall 2**.

NOTE

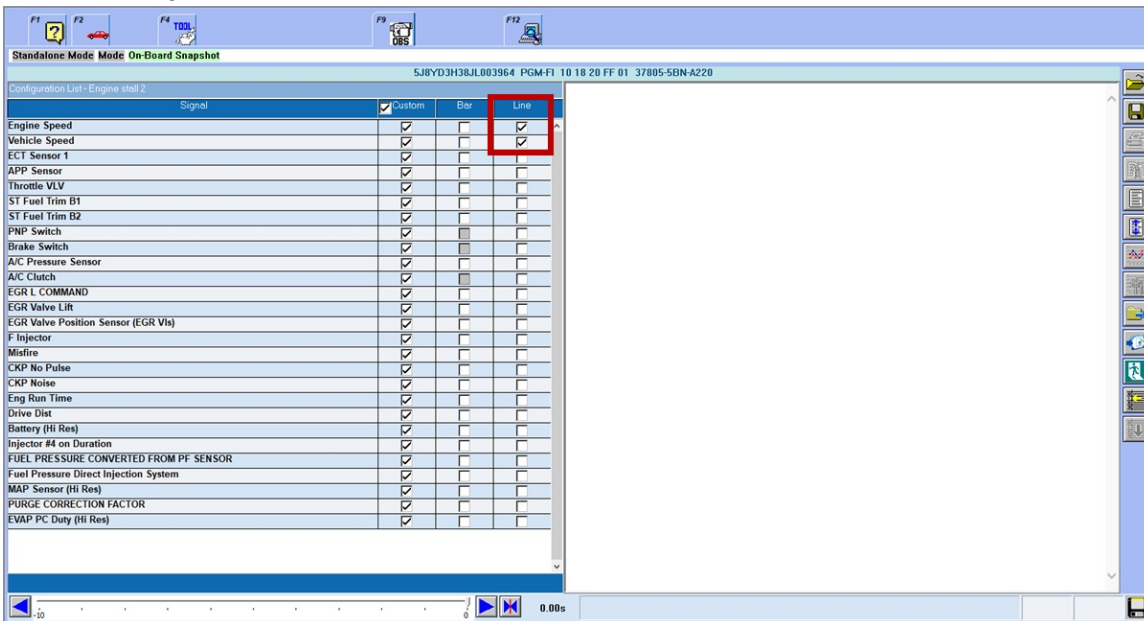
There may be several on-board snapshot files. If there is no **Engine stall 2** in the on-board snapshot, only do REPAIR PROCEDURE A - PGM-FI UPDATE.

4. Select the Configuration icon.



From the list of parameters, select the following:

- Engine Speed
- Vehicle Speed



5. Select the Line Graph icon. If **Engine Speed** is 0 RPM while **Vehicle Speed** is greater than 0 MPH, the engine stalled and you must do REPAIR PROCEDURE B - PGM-FI UPDATE AND FUEL PUMP REPLACEMENT.



REPAIR PROCEDURE A - PGM-FI UPDATE

NOTES

- Connect a fully charged jumper battery to the vehicle and leave it connected during the entire procedure to maintain steady voltage.
 - Never turn the ignition to OFF or ACCESSORY during the update. If there is a problem with the update, leave the ignition turned to ON.
 - To prevent control unit damage, do not operate anything electrical (headlights, audio system, brakes, A/C, power windows, door locks, etc.) during the update.
 - Do not use the MongoosePro VCI tool.
1. Update the PGM-FI using the i-HDS J2534 rewrite software with the MVCI or DST-i. Refer to Service Bulletin 01-023, *Updating Control Units/Modules*.
 2. **Do the PCM idle learn procedure. Refer to the service information.**
 3. **Do the CKP pattern - clear/learn procedure. Refer to the service information.**
 4. **For California residents only:** Fill out a Vehicle Emissions Recall - Proof of Correction certificate, and use N3X as the recall number. Give the certificate to your customer, and advise him or her to keep it as proof that the recall was completed. Your customer will need to submit this certificate to the DMV only if the DMV requests it. If you need more certificates, use reorder number Y0657.

Vehicle Emission Recall - Proof of Correction				
License Number	Make	Year/Model	Body Type	Vehicle Identification Number
Manufacturer			Recall Number N3X	
The above described vehicle has been repaired, modified and/or equipped with new emission control devices to meet applicable California Emission Control Laws.				
Dealer's Name		Address, City, State and Zip		
Date	Dealer's Authorized Signature			
	X			
Return this certificate to DMV only when required - otherwise retain for your records.				

Y0657 NCL 24832 (0312)

REPAIR PROCEDURE B - PGM-FI UPDATE AND FUEL PUMP REPLACEMENT

NOTES

- Connect a fully charged jumper battery to the vehicle and leave it connected during the entire procedure to maintain steady voltage.
 - Never turn the ignition to OFF or ACCESSORY during the update. If there is a problem with the update, leave the ignition turned to ON.
 - To prevent control unit damage, do not operate anything electrical (headlights, audio system, brakes, A/C, power windows, door locks, etc.) during the update.
 - Do not use the MongoosePro VCI tool.
1. Update the PGM-FI software using the i-HDS J2534 rewrite software with the MVCI or DST-i. Refer to Service Bulletin 01-023, *Updating Control Units/Modules*.
 2. Replace the low pressure fuel pump module located in the fuel tank. Refer to the service information.
 3. **Do the PCM idle learn procedure. Refer to the service information.**
 4. **Do the CKP pattern - clear/learn procedure. Refer to the service information.**
 5. **For California residents only:** Fill out a Vehicle Emissions Recall - Proof of Correction certificate, and use N3X as the recall number. Give the certificate to your customer, and advise him or her to keep it as proof that the recall was completed. Your customer will need to submit this certificate to the DMV only if the DMV requests it. If you need more certificates, use reorder number Y0657.

The image shows a 'Vehicle Emission Recall - Proof of Correction' certificate form. The form is titled 'Vehicle Emission Recall - Proof of Correction' and contains several fields for vehicle information: License Number, Make, Year/Model, Body Type, and Vehicle Identification Number. The 'Recall Number' field is circled in black and contains the handwritten text 'N3X'. Below the recall number, there is a statement: 'The above described vehicle has been repaired, modified and/or equipped with new emission control devices to meet applicable California Emission Control Laws.' There are also fields for 'Dealer's Name' and 'Address, City, State and Zip'. At the bottom, there are fields for 'Date' and 'Dealership's Authorized Signature'. A small 'X' is marked in the date field. At the very bottom of the form, it says 'Return this certificate to DMV only when required - otherwise retain for your records.' The form number 'Y0657' is in the bottom left corner and 'JCL 24832 (0312)' is in the bottom right corner.

END