

**April 30, 2019**

Version 2

## Safety Recall: 2017-19 Ridgeline Fuel Tank Unit Cracks or Leak Inspection

Supersedes 19-013, dated January 25, 2019, see REVISION SUMMARY.

### AFFECTED VEHICLES

Year	Model	Trim	VIN Range
2017-19	Ridgeline	ALL	Check the iN VIN status for eligibility

### REVISION SUMMARY

This bulletin has been extensively revised. American Honda recommends that you read the entire bulletin thoroughly.

### BACKGROUND

Certain vehicle cleaning detergents/agents may interact adversely with the fuel tank unit and feed port, causing cracks that may lead to pressurized fuel leaks.

### CUSTOMER NOTIFICATION

Owners of affected vehicles will be sent a notification of this campaign.

Do an iN VIN status inquiry to make sure the vehicle is shown as eligible.

Some vehicles affected by this campaign may be in your new or used vehicle inventory.

Failure to repair a vehicle subject to a recall or campaign may subject your dealership to claims or lawsuits from the customer or anyone else harmed as a result of such failure. To see if a vehicle in inventory is affected by this safety recall, do a VIN status inquiry before selling it.

### POSSIBLE CAUSES

The fuel pump feed line connector or the top surface of the fuel tank unit is cracked.

### CORRECTIVE ACTION

Inspect the fuel tank unit, and replace if needed. Install the fuel pump cover kit.

**CUSTOMER INFORMATION:**The information in this bulletin is intended for use only by skilled technicians who have the proper tools, equipment, and training to correctly and safely maintain your vehicle. These procedures should not be attempted by "do-it-yourselfers," and you should not assume this bulletin applies to your vehicle, or that your vehicle has the condition described. To determine whether this information applies, contact an authorized Honda automobile dealer.

## PARTS INFORMATION

Expected failure rate of the fuel tank unit is very low. Order a new unit only after confirming it is required based on the inspection procedure. Do not order for inventory.

Part Name	Part Number	Quantity
Fuel Pump Cover Kit	17063-T6Z-305	1
Fuel Tank Unit (Fuel Pump Module Set), if needed.	17045-TZ5-A10	1

## WARRANTY CLAIM INFORMATION

Operation Number	Description	Flat Rate Time	Defect Code	Symptom Code	Template ID	Failed Part Number
3105J1	Inspect the fuel tank unit for leaks and cracks. If no leaks or cracks are found, install the fuel pump cover kit.	1.2 hr	6FX00	Q3V00	A19013A	17045-TZ5-A10
3105J2	Inspect the fuel tank unit for leaks and cracks. If leaks and or cracks are found, replace it and install the fuel pump cover kit.	1.8 hr	6FX00	Q3V00	A19013B	17045-TZ5-A10

Skill Level: Repair Technician

## REPAIR PROCEDURE

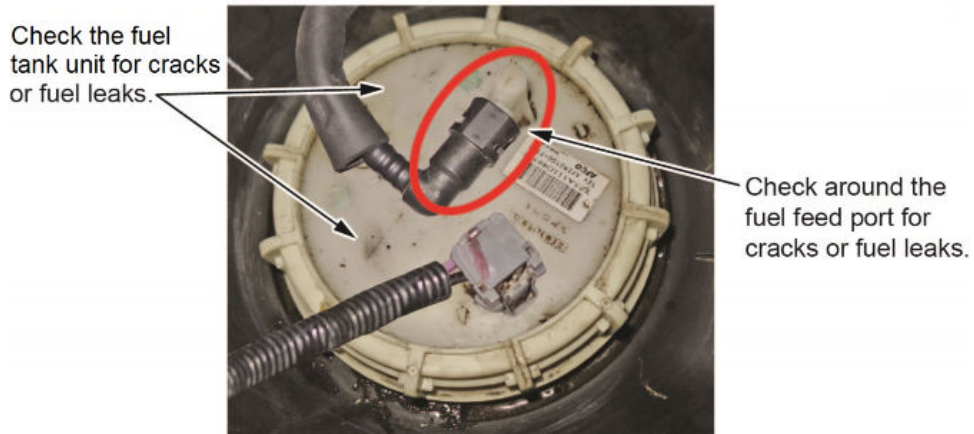
1. Remove the rear seat to gain access to the fuel tank unit. Refer to the service information.
2. Remove the fuel tank access panel.
3. Clean the fuel pump surface with a clean shop towel, and check for cracks.

### NOTE

Do not use any chemicals to clean the surface, only use a clean shop towel.

4. Run the engine for **1 minute** to check for fuel leaks.
5. Record the customer's radio station settings on the repair order.

6. Relieve the fuel pressure; refer to the service information.
7. Remove the fuel line, and check for cracks at the fuel feed port.
  - If no leaks or cracks are found, install the fuel pump cover kit.
  - If the fuel tank unit is leaking and/or cracks are found, replace the fuel tank unit and install the fuel pump cover kit. Refer to the service information.

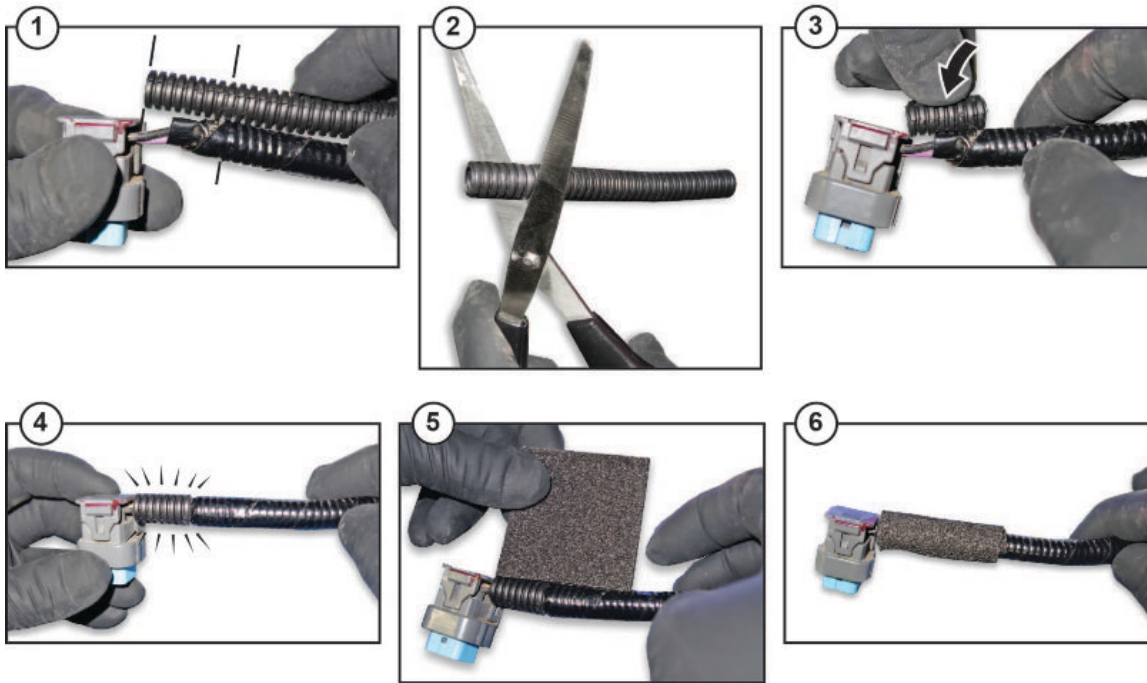


8. Disconnect the connector.

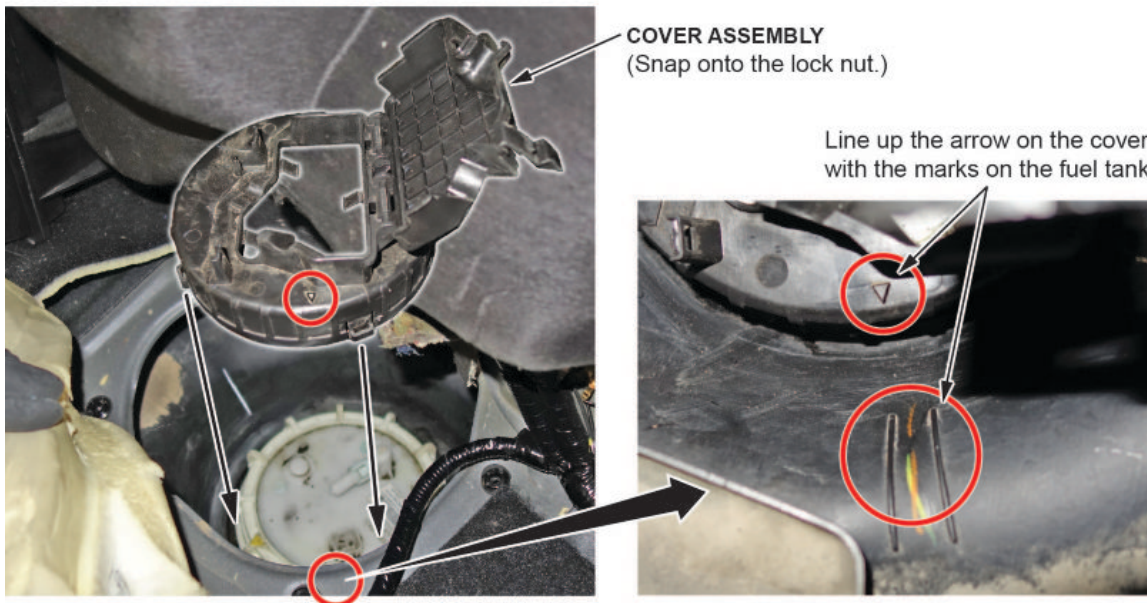
9. Place the corrugated tubing next to the connector and the corrugated tube on the wiring harness, and cut to fit as shown. Then, wrap a piece of EPT foam tape around the area as shown.

**NOTE**

If the corrugated tubing is already against the connector, this step is not needed.



10. Install the cover assembly, and make sure the arrow on the cover lines up with the marks on the fuel tank and the cover assembly is fully snapped onto the lock nut.



11. Connect the fuel line and the connector as shown.

Reconnect the connector and route across the cover as shown.



12. Reconnect the battery terminal and do the fuel leak check. Refer to the service information.

13. Close the lid on the cover assembly.

Close the cover lid.



14. Install the fuel tank access panel and rear seat.

**NOTE**

When installing the rear seat, start the mounting bolts by hand. The threads may be damaged if the bolts are not properly started before applying torque. If the threads are damaged, the rear seat crossmember will need to be replaced by a body shop. **Never** use a Time Sert™ or other similar methods of repair for damaged threads.

15. Input the customer's radio station settings.

16. *For California residents only:* Fill out a Vehicle Emissions Recall - Proof of Correction certificate, and use **Q3V** as the recall number. Give the certificate to your customer, and advise him or her to keep it as proof that the recall was completed. Your customer will need to submit this certificate to the DMV only if the DMV requests it. If you need more certificates, use reorder number **Y0657**.

The image shows a form titled "Vehicle Emission Recall - Proof of Correction". The form has several fields: License Number, Make, Year Model, Body Type, and Vehicle Identification Number. Below these is a field for Manufacturer and a field for Recall Number, which contains the handwritten text "Q3V" and is circled in black. Below the recall number field is a paragraph of text: "The above described vehicle has been repaired, modified and/or equipped with emission control devices to meet applicable California Emission Control Laws." Below this is a field for Dealer's Name and a field for Address, City, State and Zip. At the bottom, there are fields for Date and Dealer's Authorized Signature, with an "X" marked in a box between them. At the very bottom, there is a line of text: "Return this certificate to DMV only when required - otherwise retain for your records." In the bottom left corner, there is a small number "Y0657" and in the bottom right corner, there is a small number "JCL 24832 (0312)".

END