



Above. Beyond. Always.

IMPORTANT SAFETY RECALL NOTICE NHTSA RECALL ID: 19E-046

MORryde RTPB77-004 through RTPB77-013, RTPB77-015,
& RTPB77-016 Wedges for Rotating Pin Boxes

Dear MORryde Wedge Owner:

This notice is sent to you in accordance with the requirements of the National Traffic and Motor Vehicle Safety Act.

MORryde has decided a potential safety concern exists with the wedges listed above for vehicles manufactured between 4/30/18 and 7/16/19. It has been determined that wedges in this recall population may have been packaged with improper length bolts.

REASON FOR RECALL: The bolts are used to hold the wedge to the rotating pin box and may be too long or too short. If the rotating pin box is unlocked and allowed to rotate and the wedge is installed with improper length bolts, the wedge may become disconnected from the pin box. This would allow the rotating pin box to pivot in two places which could allow the trailer to come in contact with the truck, increasing the risk of a crash.

REMEDY FOR RECALL: The bolt will be inspected and replaced if necessary, at no cost to the owner. The remedy will take 15 minutes.

If after having attempted to take advantage of this recall you believe you have not been able to have your defective part remedied without charge and within a reasonable amount of time, you may submit a complaint to the Administrator, National Highway Traffic Safety Administration, 1200 New Jersey Ave., S.E., Washington, D.C. 20590 or call the toll-free vehicle safety hotline at 1-888-327-4236 (TTY: 1-800-424-9153); or go to <http://www.safercar.gov>.

We apologize for any inconvenience this safety recall may cause, but your safety is our first concern.



IMPORTANT SAFETY RECALL NOTICE

RECALL INSTRUCTIONS

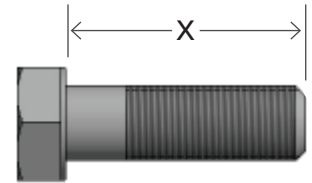
TOOLS REQUIRED:

- 15/16" Socket
- Breaker Bar
- 250 ft-lb Torque wrench
- Tape measure or ruler

OPTIONAL:

- Impact gun
- Ratchet

TIME ALLOWED: 15 minutes

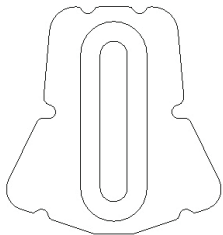


NOTE:

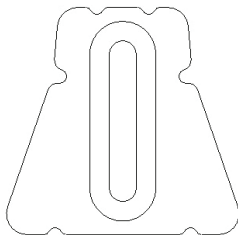
Hex head bolts are measured from below the head as shown above and usually measure approximately 1/16" shorter than the specified measurement.

NOTE: The following is a list showing the wedges, their part numbers, bolt lengths, and quantity of each bolt.

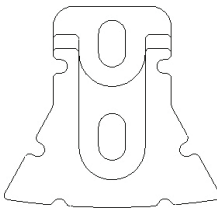
RTPB77-004
(2) 1-1/2" Bolts



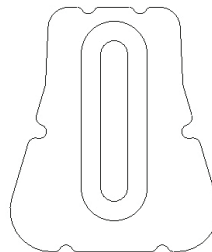
RTPB77-005
(2) 1-1/2" Bolts



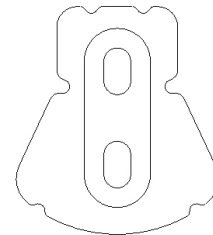
RTPB77-006
(1) 1-3/8" Bolt
(1) 1-3/4" Bolt



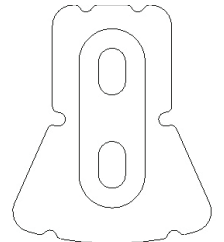
RTPB77-007
(2) 1-1/2" Bolts



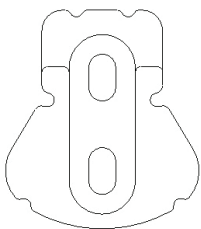
RTPB77-008
(2) 1-1/2" Bolts



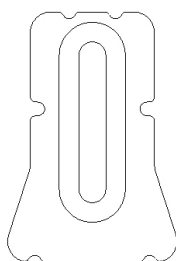
RTPB77-009
(2) 1-1/2" Bolts



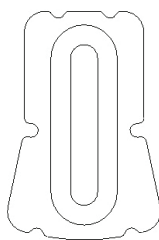
RTPB77-010
(2) 1-1/2" Bolts



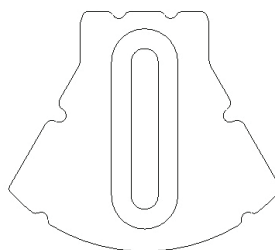
RTPB77-011
(2) 1-1/2" Bolts



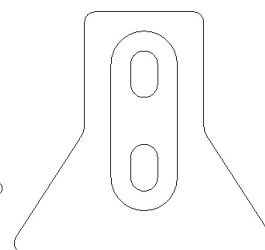
RTPB77-012
(2) 1-1/2" Bolts



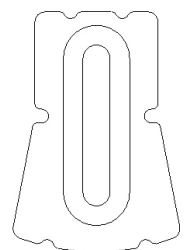
RTPB77-013
(2) 1-1/2" Bolts



RTPB77-015
(2) 1-1/2" Bolts



RTPB77-016
(2) 1-1/2" Bolts



Above. Beyond. Always.

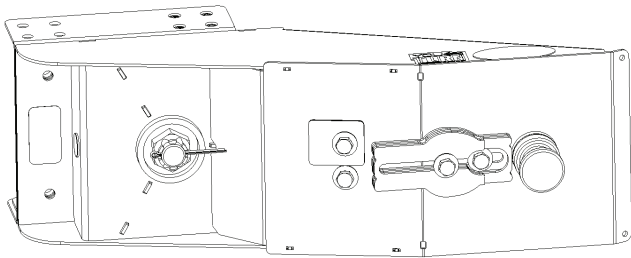
IMPORTANT SAFETY RECALL NOTICE

RECALL INSTRUCTIONS

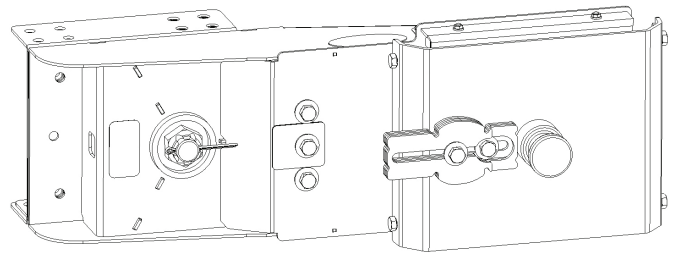
NOTE: The following steps are intended to be performed on one bolt at a time so that the wedge can maintain position without having to follow the wedge installation instructions in the owner's manual.

STEP 1

Using the breaker bar and 15/16" socket, loosen one of the bolts that hold the wedge in place. Remove the bolt and verify that it is the proper length.



The wedge in use in the You Turn Rotating Pin Box.



The wedge in use in the Orbital Rotating Rubber Pin Box.

STEP 2a

If the bolt that was removed in Step 1 was correct, reinstall the bolt and torque to 200 ft-lbs. Continue to Step 3.

STEP 2b

If the bolt that was removed in Step 1 was incorrect, contact MORryde to replace it with the correct bolt. Before moving the unit, refer to the Lockout Procedure* located after Step 3. The 1-3/8" bolt is UO115-826, the 1-1/2" bolt is UO115-823, and the 1-3/4" bolt is UO115-827. Reinstall the bolt and torque to 200 ft-lbs.

STEP 3

Repeat Steps 1 & 2 for the remaining bolt.

THIS COMPLETES THE RECALL.

* LOCKOUT PROCEDURE:

If a bolt is removed and determined the length is improper, the following repair instructions need to take place. If the unit needs to be moved prior to receiving and completing the repair instructions, complete the lockout procedure before moving the unit.



Above. Beyond. Always.

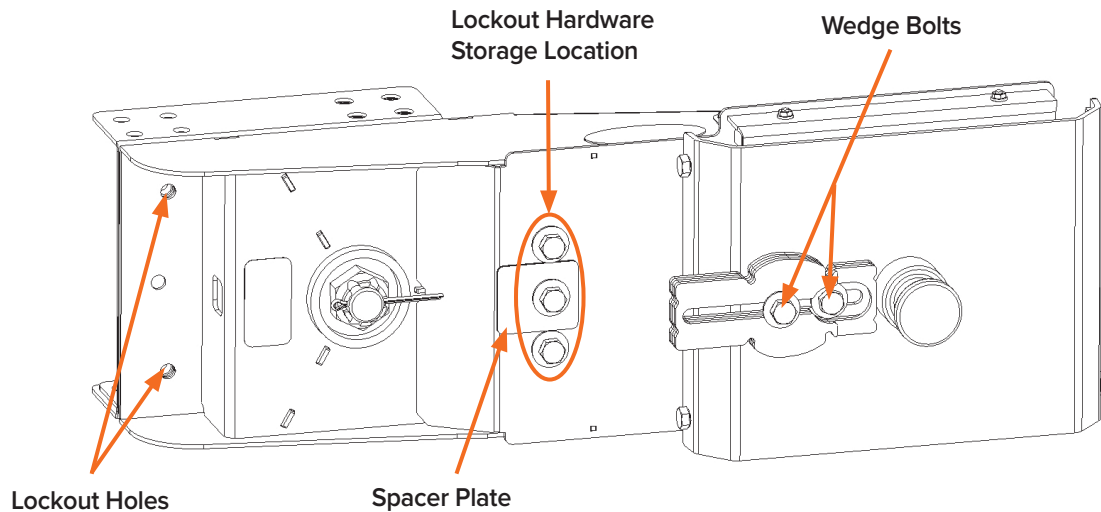
IMPORTANT SAFETY RECALL NOTICE

LOCKOUT PROCEDURE

TOOLS REQUIRED: • 15/16" Socket • Breaker Bar • Torque wrench capable of 200ft-lbs

TIME ALLOWED: 30 minutes

Use the socket and breaker bar to loosen the wedge bolts and the bolts that are in the lockout hardware storage location, removing them and the spacer plates.



Place the spacer plates between the spindle box and pin box so that the hole lines up with the lockout holes. Use the two 5/8-18 x 1.5" bolts removed from the storage location with the conical lock washers and hand thread them into the lockout holes. Use the remaining bolts and conical lock washers and hand thread them into the storage location to store the wedge. Set the torque wrench to 200ft-lbs and torque all 5 bolts.

