



## Safety Recall Action Notice 566 Issue 1 - 05.2019

<b>Subject: Café Racer Fairing Conduits</b>				
<b>Notice Number</b>	<b>Models Affected</b>	<b>VIN Range</b>		<b>Markets Affected</b>
566	Thruxton 1200	From 743684	to 957335	All Markets
566	Thruxton 1200R	From 740405	to 958219	All Markets
566	Thruxton 1200 Dual Seat	From 766764	to 895179	All Markets
566	Thruxton 1200R Dual Seat	From 766510	to 895892	All Markets

### Background Information

Internal investigations have identified the need to replace the conduits positioning the harness within the Accessory Café Racer fairing on the above models. Additionally, Thruxton 1200 and Thruxton 1200R models up to VIN 749070 fitted with an Accessory Café Racer fairing will need a new lock set.

Dealers are requested to replace the conduits, and the lock set if required, with the ones supplied in the kits as described in the procedure below.

### Customer Contact Instructions

#### Notice

STOP DELIVERY OF AFFECTED MOTORCYCLES IMMEDIATELY.

DO NOT deliver a motorcycle affected by this Safety Recall Action Notice to a customer until you have completed, or confirmed completion of, the procedures described in this Safety Recall Action Notice.

Delivering a motorcycle subject to an outstanding Safety Recall Action Notice may contravene local or national laws in your market, territory or country.

Triumph subsidiaries and distributors must instigate a Safety Recall Action in their country in accordance with the national recall code of practice. For vehicles in dealer stock, the safety recall MUST be actioned before delivery to the customer.

Dealers are to prioritise repair of customer owned motorcycles before any unsold motorcycles.

### Identification of Affected Motorcycles

Thruxton 1200 and Thruxton 1200R models in the above VIN ranges, fitted with the Accessory Café Racer fairing.

---

## Warranty Claim Instructions

Notice Number	Model	Fault Code	Repair Code	Description	Repair Time Allowance
566	All affected models.	039002995 (Up to VIN 749070)	995661	SB566 - Check for Café Racer Fairing Installation	0.01 Hours
		039002994 (From VIN 749071)			
566	Thruxton 1200 and Thruxton 1200R up to VIN 749070	039002995	995663	SB566 - Remove and Replace Café Racer Fairing Conduits and Lock Set	2.2 Hours
566	Thruxton 1200 and 1200 R models from VIN 749071 (including Dual Seat models)	039002994	995662	SB566 - Remove and Replace Café Racer Fairing Conduits	0.5 hours

## Genuine Parts Information

Notice Number	Model	Part Number	Description	Quantity
566	All affected models from VIN 749071	A9701458	<b>Kit, Conduit</b> Consisting of: Conduit, Fairing, LH, Routed - Qty 1 Conduit, Fairing, RH - Qty 1 Clip, Ratchet, Rivet, 5.9-7.5 - Qty 4	1
566	Thruxton 1200 up to VIN 749070	A9701031	<b>Parts Kit, Conduits and Lockset</b> Consisting of: Conduit, Fairing, LH, Routed - Qty 1 Conduit, Fairing, RH - Qty 1 Clip, Ratchet, Rivet, 5.9-7.5 - Qty 4 Lock set - Qty 1 Screw, Pan/Hd, Tx, M6 x 16 - Qty 1 Bolt, Shear, M6 x 22 - Qty 2 Bolt, RHHF, M5 x 20 - Qty 2 Locknut, Flanged, M6 x 1.0 - Qty 2 Screw, Pan/Hd, Tx, M6 x 25 - Qty 2 Washer, M6, Elongated - Qty 2	1
566	Thruxton 1200R up to VIN 749070	A9701032	<b>Parts Kit, Conduits and Lockset</b> Consisting of: Conduit, Fairing, LH, Routed - Qty 1 Conduit, Fairing, RH - Qty 1 Clip, Ratchet, Rivet, 5.9-7.5 - Qty 4 Lock set - Qty 1 Screw, Pan/Hd, Tx, M6 x 16 - Qty 1 Bolt, Shear, M6 x 22 - Qty 2 Bolt, RHHF, M5 x 20 - Qty 2 Locknut, Flanged, M6 x 1.0 - Qty 2 Screw, Pan/Hd, Tx, M6 x 25 - Qty 2 Washer, M6, Elongated - Qty 2	1

### Parts Ordering Instructions

**For Triumph Subsidiary and Overseas Distributor dealers using Triumph Warranty On-Line with Parts Auto Ordering Flag switched on:** Order all repair parts by submitting a New Prior through the Warranty On-Line system. Entering the above repair code in a New Prior will automatically add the parts required and labour times for this Safety Recall Action Notice.

**For Overseas Distributor dealers NOT using Triumph Warranty On-Line or for Overseas Distributor dealers using Triumph Warranty On-Line with Parts Auto Ordering Flag switched off:** Orders should be placed using the normal parts ordering procedure.

### Genuine Parts Return

Dealer to retain parts for 90 days. All parts must be stored in a secure, non-public accessed area and correctly identified with a completed warranty label. Thereafter the parts must be rendered unusable prior to scrapping.

## Other Instructions

Once completed, please mark the Service Record Book that the requirements of this Safety Recall Action Notice have been complied with.

Before returning the motorcycle to the customer, download the latest calibration to the engine control module using the current version of the Triumph diagnostic software.

## Warning

Before starting work, make sure the motorcycle is stabilised and adequately supported. This will help prevent it from falling and causing injury to the operator or damage to the motorcycle.

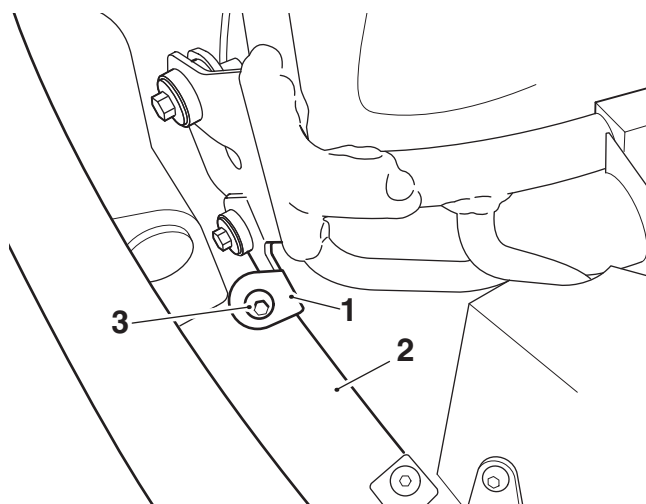
## Check Only Claim

Dealers are requested to contact all potentially affected customers to ascertain if an Accessory Café Racer fairing is fitted to their motorcycle. If an Accessory Café Racer fairing is not fitted, a check only claim must be submitted and no further action is required.

## Café Racer Fairing Conduit Replacement

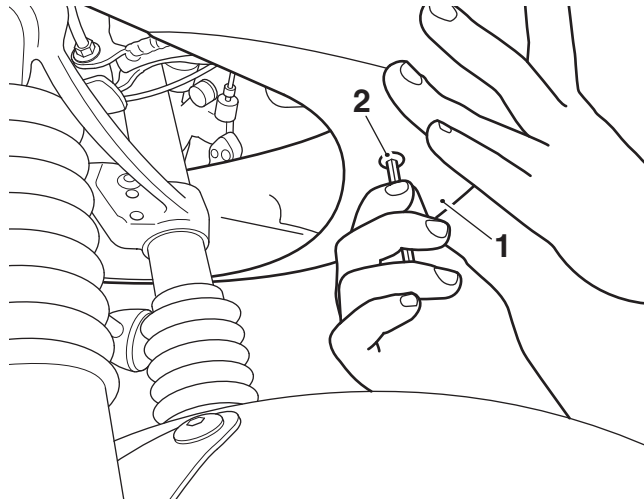
### Fairing and Conduit Removal - All Models fitted with an Accessory Café Racer fairing

1. Remove the seat as described in the Service Manual.
2. Disconnect the battery as described in the Service Manual.
3. Remove the fixings securing the fairing to the front subframe.



1. Front subframe
2. Fairing
3. Fixing

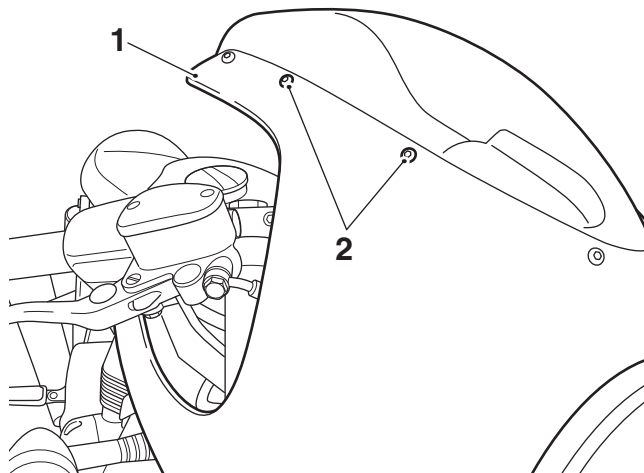
- 
4. Remove the lower front fixing from the fairing assembly.



**1. Fairing assembly**

**2. Fixing**

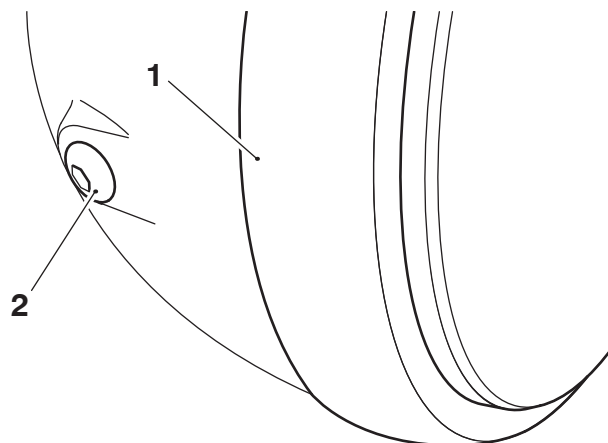
5. Supporting the fairing assembly, remove the two central fixings from either side of the windscreen. Remove the fairing assembly. The windscreen will stay attached to the fairing assembly with the other four fixings.



**1. Fairing assembly**

**2. Fixings (right hand side shown)**

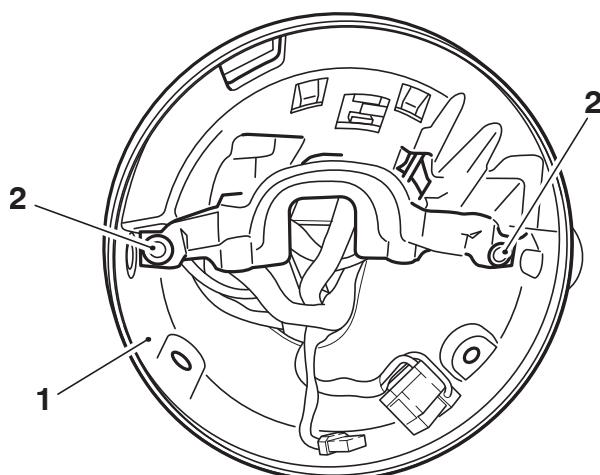
- 
6. Release the two fixings and detach the headlight from the headlight bowl.



**1. Headlight**

**2. Headlight fixing (one of two)**

7. Disconnect the electrical connector from the headlight bulb, detach the position light and remove the headlight.
8. Release the fixings and detach the harness bracket from the headlight bowl.



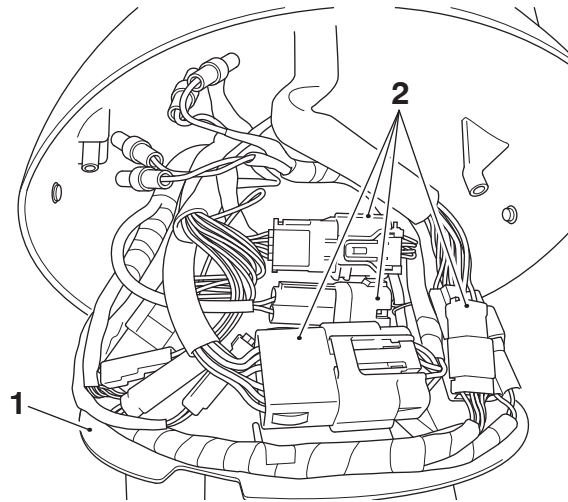
**1. Headlight bowl**

**2. Fixings**

**Note:**

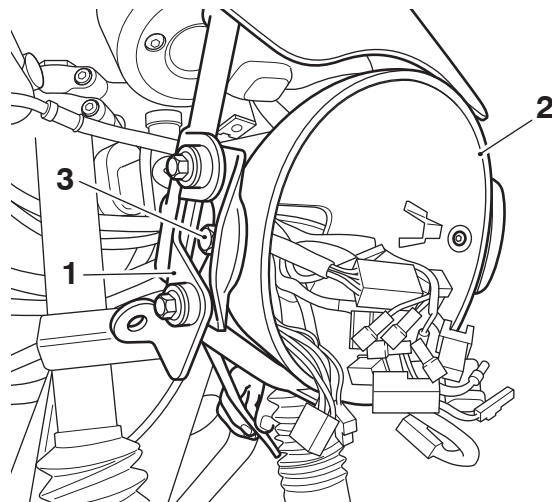
- Note the position of the electrical connectors on the back of the harness bracket for installation.

- 
9. On the back of the harness bracket, detach all the electrical connectors and remove the harness bracket.



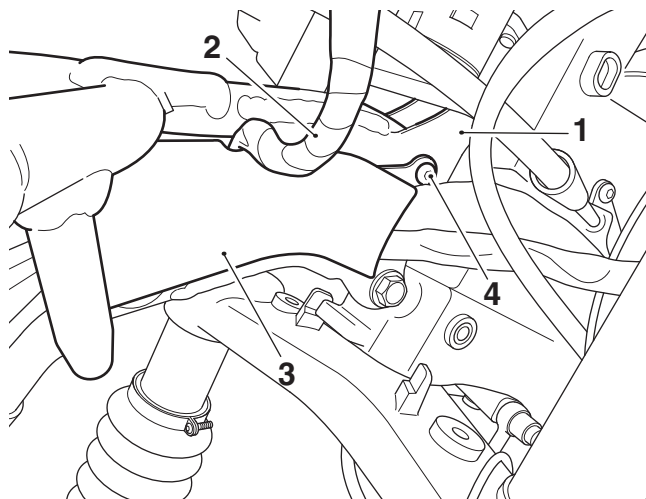
- 1. **Harness bracket**
- 2. **Electrical connectors**

10. Remove the headlight mounting fixings and remove the headlight bowl while feeding the harnesses out of the headlight bowl.



- 1. **Front subframe**
- 2. **Headlight bowl**
- 3. **Headlight mounting fixings**

- 
11. Remove the left and right hand conduits and retain the fixings. Discard the ratchet rivet clips.



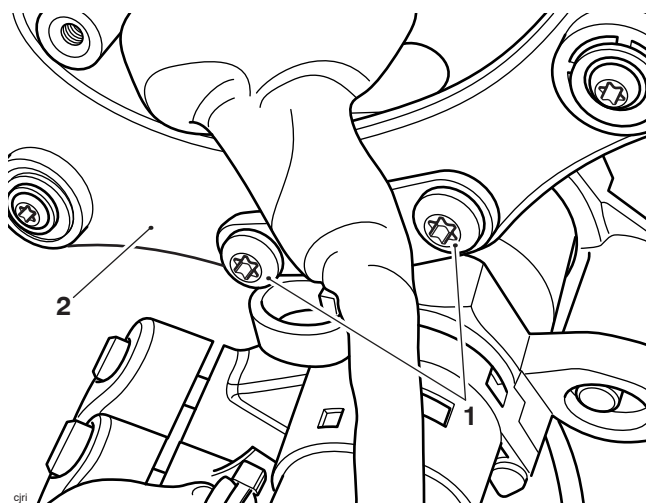
1. Front subframe
2. Instrument harness
3. Conduit (left hand side shown)
4. Fixing

**Lock Set Replacement - All Models fitted with an Accessory Café Racer fairing up to VIN 749070 only. For models from VIN 749071 the lock set replacement is not required, continue from Conduit and Fairing Installation - All Models, on page 16.**

### Ignition Switch Removal

**Note:**

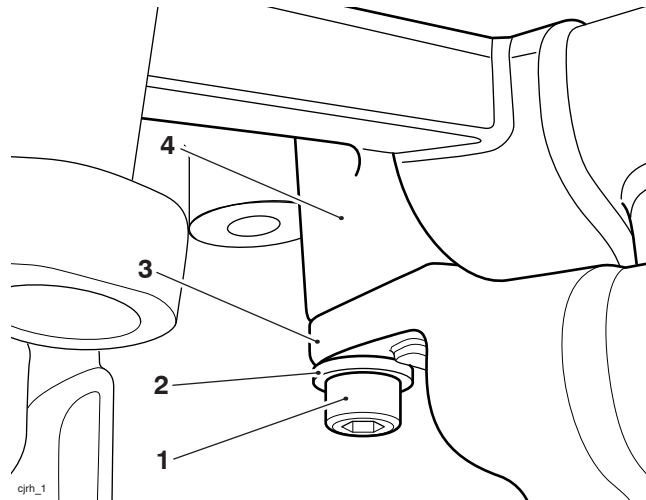
- **Note the position and the routing of the ignition switch harness for installation.**
1. Follow the routing of the ignition switch harness and disconnect it from the main harness.
  2. Remove the two fixings and detach the instruments and mounting bracket assembly from the upper yoke.



1. Fixings
2. Instruments mounting bracket

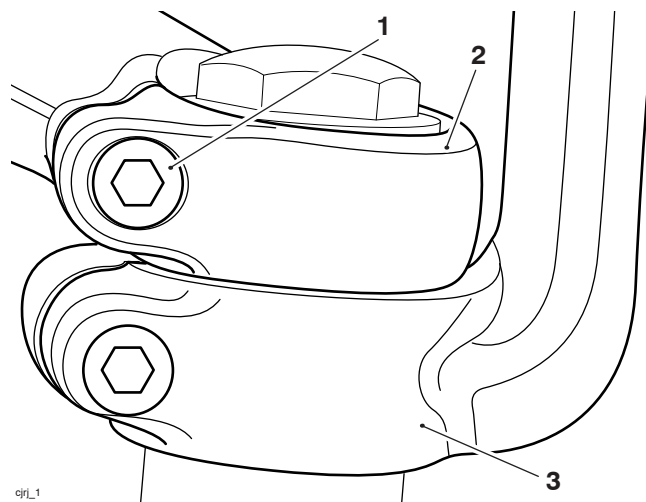


- 
3. Remove the fixing and washer securing the handlebar riser to the upper yoke.



- 1. Fixing
- 2. Washer
- 3. Handlebar riser
- 4. Upper yoke

4. Loosen the upper yoke pinch bolts.



- 1. Pinch bolts
- 2. Upper yoke
- 3. Handlebar riser

5. Remove the upper yoke centre nut from the steering stem and remove the upper yoke.

## **Warning**

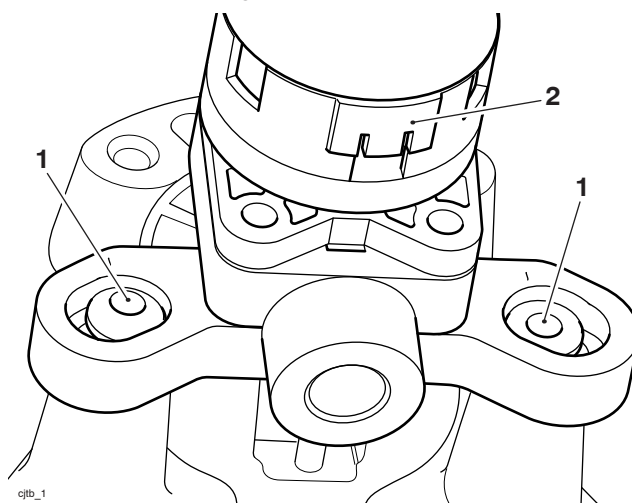
When using a drill, ensure suitable protective equipment including eye, ear and hand protection is worn. Do not wear loose clothing or jewellery. Failure to wear suitable protective equipment may result in serious injury.

## **Caution**

Ensure the drill is central and level when drilling the shear bolts. Drilling the bolts at an angle or off centre may result in damage to the upper yoke.

### **Note:**

- It is recommended that the shear bolts are drilled out. Use a centre punch to mark the centre of the bolt and, using a smaller drill first, drill the head of the bolt off.
6. Remove the shear bolts then remove the ignition switch.

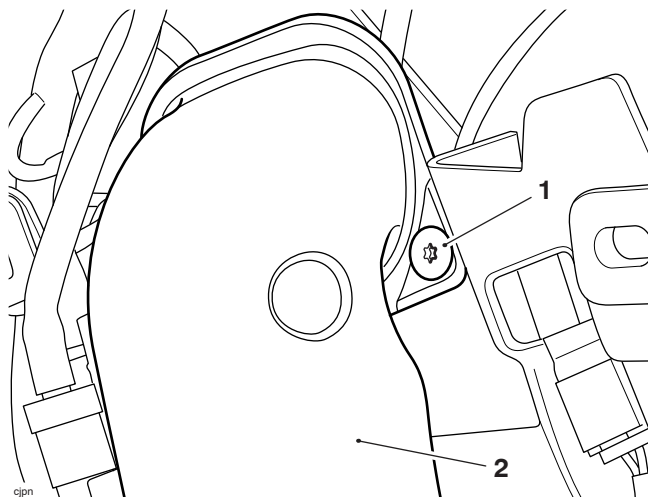


1. Shear bolts
2. Ignition switch

### **Seat Lock Removal - All Models fitted with an Accessory Café Racer fairing up to VIN 749070 only**

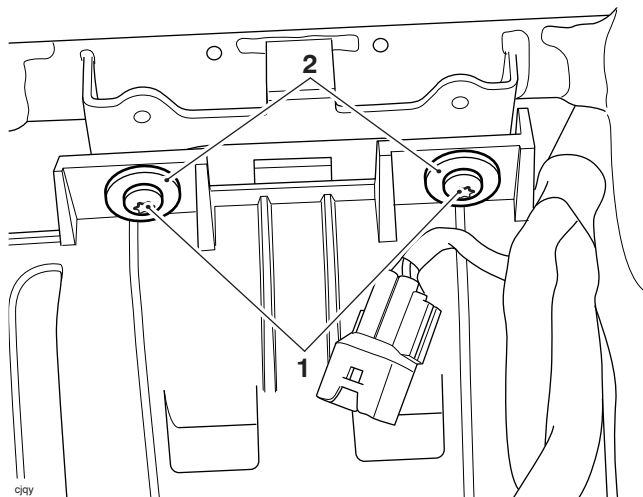
1. Remove the left and right side panels as described in the Service Manual.
2. Remove the engine ECM as described in the Service Manual.
3. Remove the rear mudguard as described in the Service Manual. Note the routing of the seat lock cable for installation.

- 
4. Remove the fixing and remove the air intake duct on the left hand side of the airbox.



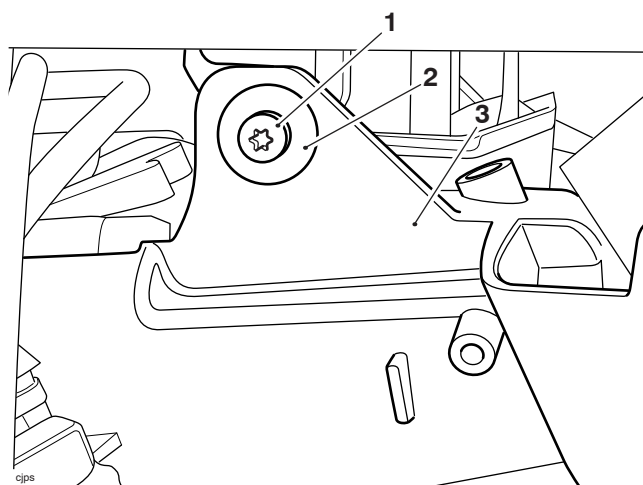
- 1. Fixing**  
**2. Air intake duct**

5. Remove the two fixings and their shouldered washers from under the rear of the airbox.



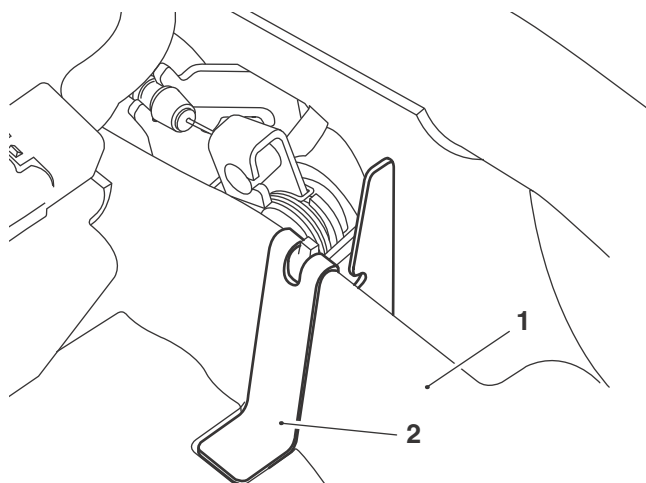
- 1. Fixings**  
**2. Shouldered washers**

6. Remove the fixing and shouldered washer from both sides of the airbox.



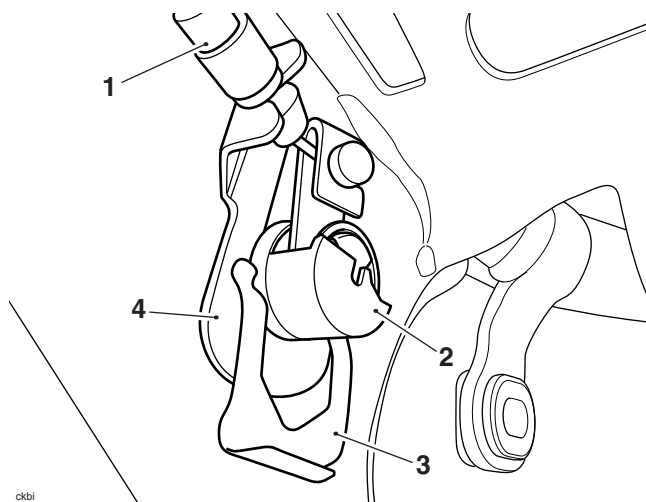
- 1. Fixing**  
**2. Shouldered washer**  
**3. Airbox**

7. Release the fixing securing the seat lock latch to the frame.
8. Remove the seat lock protection bracket from the battery tray.



1. **Battery tray**
2. **Seat lock protection bracket**

9. Lower the airbox sufficiently to allow access to the seat lock barrel.
10. Remove the lock plate from the seat lock barrel.



1. **Cable**
2. **Seat lock barrel**
3. **Lock plate**
4. **Guide plate**

11. Remove the guide plate from the seat lock barrel and cable.
12. Rotate the seat lock barrel assembly to route through the frame and remove from the motorcycle, noting its position for installation.

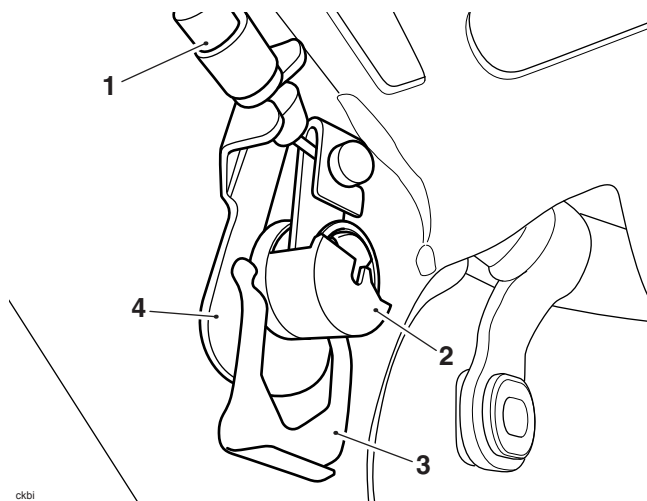
### **Fuel Filler Cap Lock Replace - All Models fitted with an Accessory Café Racer fairing up to VIN 749070 only**

1. Lift the fuel filler cap flap.
2. Remove the original fuel filler cap with an original key.
3. Install the new fuel filler cap from the lock set kit with a new key.

---

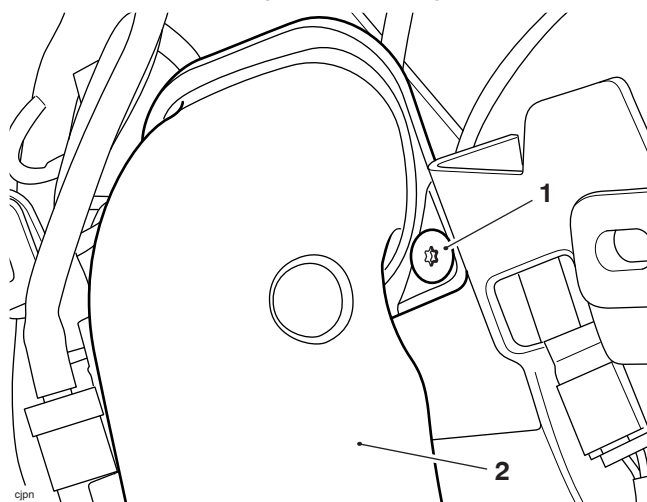
## Seat Lock Installation - All Models fitted with an Accessory Café Racer fairing up to VIN 749070 only

1. Route the seat lock cable through the aperture in the frame and position the seat lock as noted during removal.



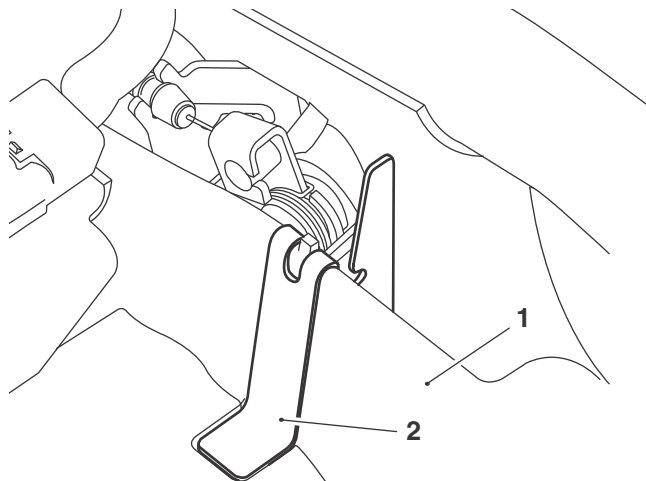
1. Cable
2. Seat lock barrel
3. Lock plate
4. Guide plate

2. Fit the guide plate to the rear of the seat lock barrel and clip the cable in place.
3. Install the lock plate to the seat lock barrel.
4. Raise the airbox to its correct position.
5. Secure the airbox with the four shouldered washers and fixings, tighten the fixings to 6 Nm.
6. Refit the air intake duct to the airbox and tighten its fixing to 1.5 Nm.



1. Fixing
2. Air intake duct

- Fit the seat lock protection bracket to the battery tray.



**1. Battery tray**

**2. Seat lock protection bracket**

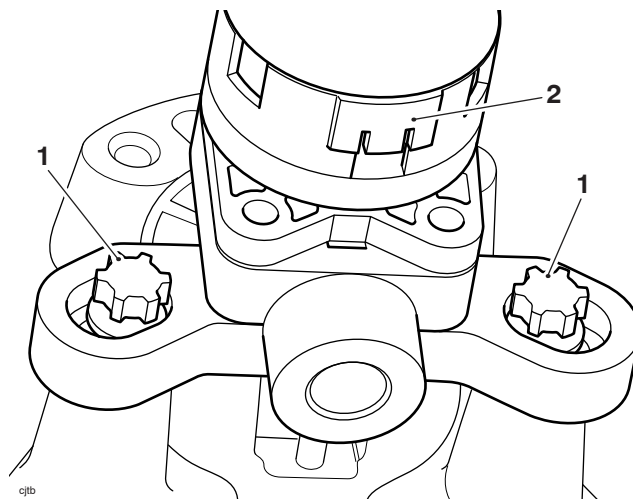
- Fit the seat lock latch to the frame with a new fixing and tighten to 9 Nm.
- Refit the rear mudguard as described in the Service Manual. Ensure the seat lock cable is routed as noted during removal.
- Refit the engine ECM as described in the Service Manual.
- Refit the left and right side panels as described in the Service Manual.

**Ignition Switch Installation - All Models fitted with an Accessory Café Racer fairing up to VIN 749070 only**

- Fit the ignition switch to the upper yoke.

**Note:**

- The torx head section on top of the bolt snaps off when fully tightened, leaving a tamper-proof dome.
- Fit new washers and shear bolts and tighten until the heads shear off.



**1. Shear bolts**

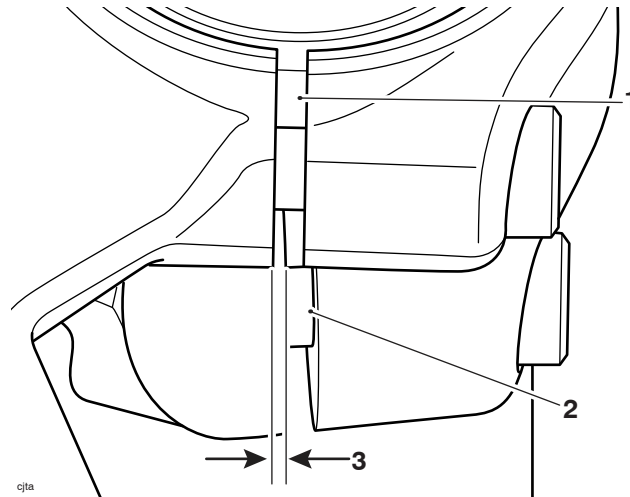
**2. Ignition switch**

- Refit the upper yoke and tighten the upper yoke centre nut to 90 Nm.
- Tighten the upper yoke pinch bolts to 20 Nm.

**Note:**

- Up to half of the clamp slot overlap is acceptable.
- If over half of the clamp slot is overlapped, the handlebar riser will require adjustment.

- 
5. Visually check the alignment of the upper yoke clamp slot to the handlebar clamp line.



1. Upper yoke clamp slot
2. Handlebar riser clamp slot
3. Clamp slot overlap (shown as acceptable)

**Note:**

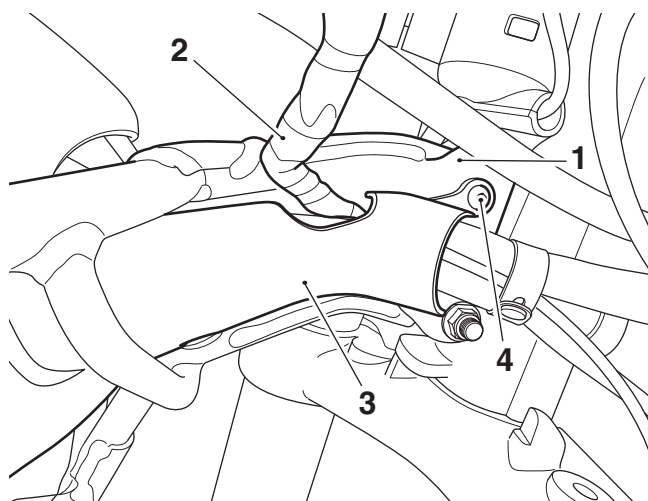
- Refer to the Service Manual if the handlebar riser requires adjustment.
6. Refit the instruments and bracket assembly to the upper yoke. Tighten the new fixings to 8 Nm.
  7. Route the ignition switch harness and connect it to the main harness as noted for removal.

## Conduit and Fairing Installation - All Models fitted with an Accessory Café Racer fairing

### **Warning**

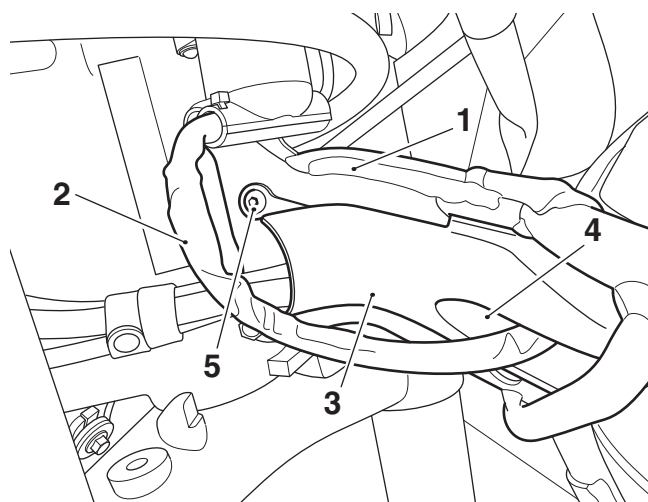
A wiring harness which becomes trapped or kinked during installation, or general motorcycle operation, may result in wiring harness damage and electrical problems. This could give rise to a dangerous riding condition resulting in a fire, loss of motorcycle control and an accident.

1. Install the new left hand conduit from the kit, routing the instrument harness through the recess, and tighten the fixing to 1.5 Nm.



1. **Front subframe**
2. **Instrument harness**
3. **Conduit**
4. **Fixing**

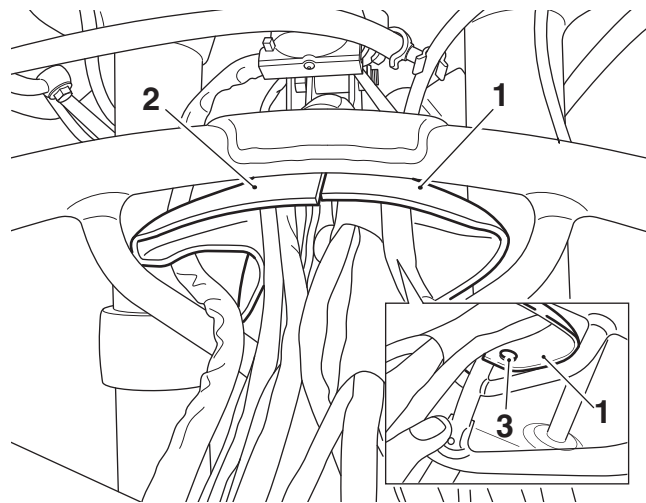
2. Install the new right hand conduit from the kit, ensuring the ignition switch harness is routed through the recess in the front of the cover as shown. Tighten the fixing to 1.5 Nm.



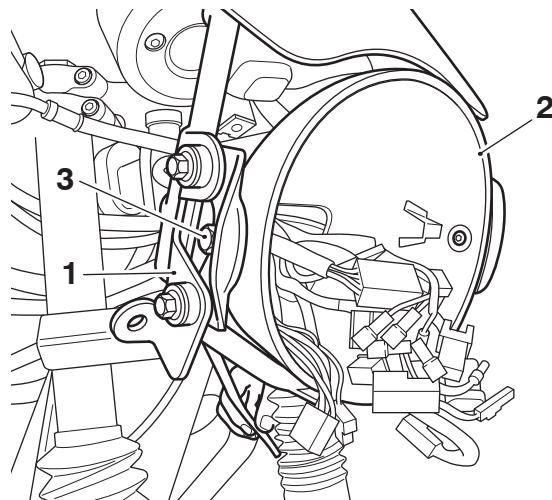
1. **Front subframe**
2. **Ignition switch harness**
3. **Conduit**
4. **Recess**
5. **Fixing**



- 
3. Install the ratchet rivet clips provided in the kit to the front of the conduits.

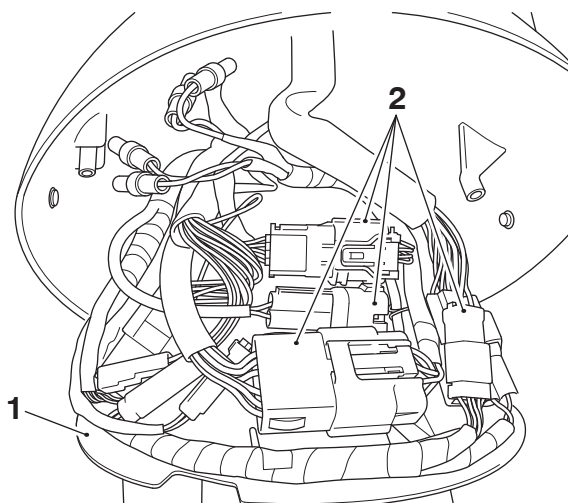


1. **Conduit, left hand**
2. **Conduit, right hand**
3. **Ratchet rivet clip, left hand shown**
4. Install the headlight and headlight bowl as described in the Service Manual.
5. Refit the headlight bowl while feeding the harnesses into the headlight bowl. Do not fully tighten the fixings at this stage.



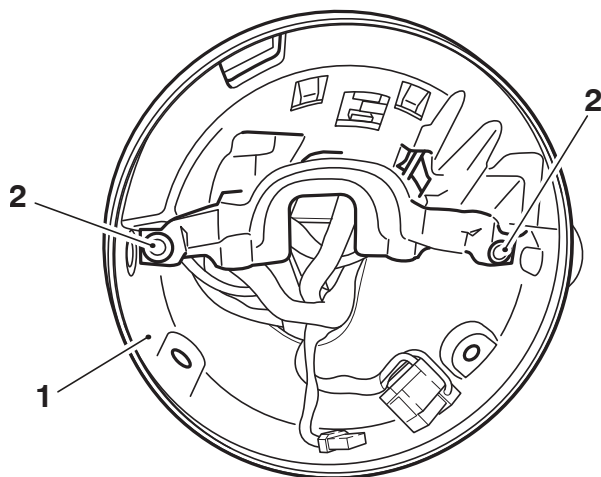
1. **Front subframe**
2. **Headlight bowl**
3. **Headlight mounting fixings**

- 
6. Fit the wiring harness electrical connectors to the back of the harness bracket as noted during removal.



- 1. **Harness bracket**
- 2. **Electrical connectors**

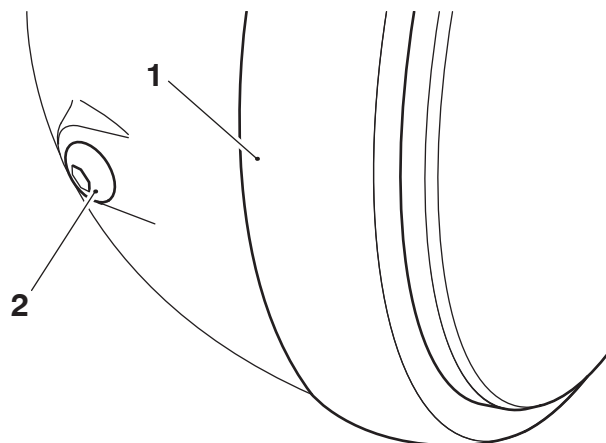
7. Fit the harness bracket to the headlight bowl and tighten the fixings to 1.5 Nm.



- 1. **Headlight bowl**
- 2. **Fixings**

8. Reconnect the headlight electrical connector and refit the position light.

- 
9. Refit the headlight, tightening the fixings to 4 Nm.



**1. Headlight**

**2. Headlight fixing (one of two)**

10. Reconnect the battery as described in the Service Manual.
11. **For models fitted with an Accessory Café Racer fairing up to VIN 749070 only:** Add the new keys to the immobiliser system using the Triumph Diagnostic Tool using the **Re-register all keys** function. Delete the original keys.

**Note:**

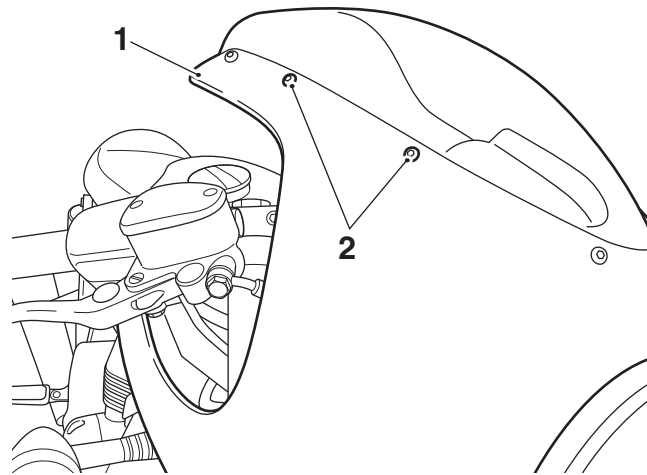
- **When changing the lock set, a new set of keys are supplied. The new key numbers must be recorded in the Owner's Handbook for future reference and the customer informed.**
12. Note the new key number in the Owner's Handbook.
13. **All models fitted with an Accessory Café Racer fairing:** Start the engine.

**⚠ Warning**

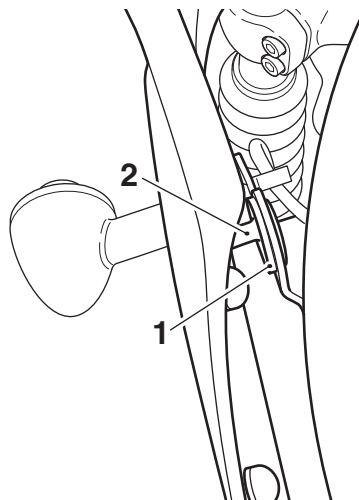
Move the handlebars to left and right full lock while checking that cables and harnesses do not bind. Cables or harnesses that bind will restrict the steering and will cause loss of control and an accident.

14. With the engine running, turn the handlebars lock to lock, and check that all switch housing functions, headlight, direction indicators, rear lights and brake lights operate as intended in all steering positions, and that the engine continues to idle.
15. Adjust the headlight as described in the service manual. Tighten the headlight fixings to 10 Nm.
16. Switch off the engine.
17. Ensure the well nuts are located correctly in the front subframe.

- 
18. Position the fairing and windscreen assembly to the front subframe and locate the rear fixing pegs to the rear mounting bracket grommets. Secure with the four fixings and tighten to 1.5 Nm.



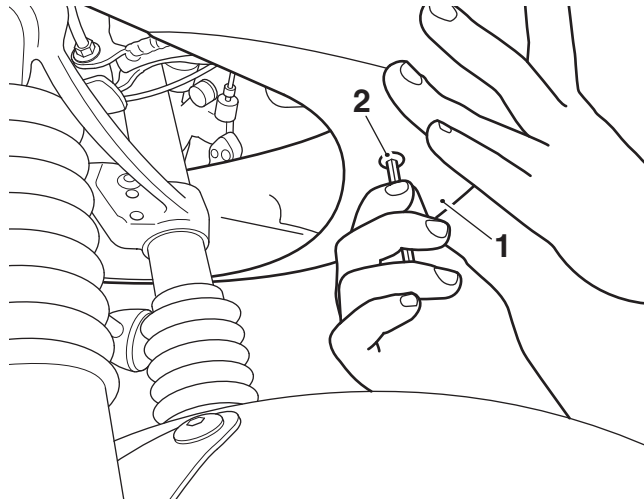
- 1. Fairing assembly
- 2. Fixings (right hand side shown)



- 1. Rear mounting bracket grommet
- 2. Fairing assembly rear fixing peg

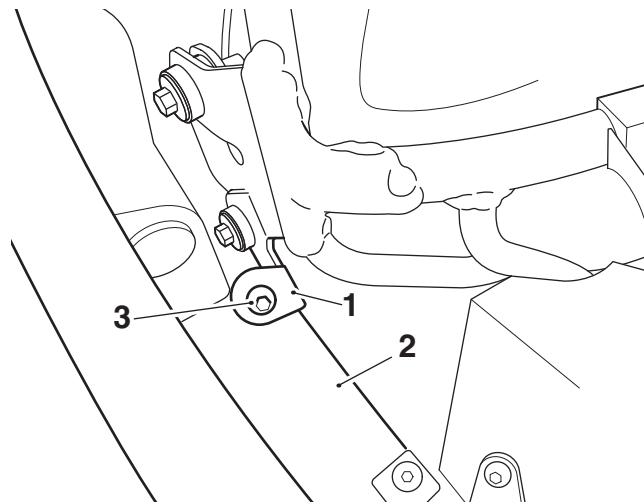
---

19. Fit the front lower fixing to the fairing assembly and tighten to 3 Nm.



- 1. Fairing assembly
- 2. Fixing

20. Install the two fixings securing the fairing to the front subframe and tighten to 3 Nm.



- 1. Front subframe
- 2. Fairing
- 3. Fixing

---

**⚠ Warning**

Move the handlebar to the left and right full lock while checking that the handlebars do not restrict the steering by contacting the fairing assembly. Operation of the motorcycle with restricted steering will result in loss of motorcycle control and an accident.

**⚠ Warning**

Move the handlebars to left and right full lock while checking that cables and harnesses do not bind. Cables or harnesses that bind will restrict the steering and will cause loss of control and an accident.

21. Check the handlebars do not contact the fairing assembly and that the cables and harnesses do not bind.
22. Refit the seat as described in the Service Manual.

**Circulation**

Initial and date when read and return to central file holder

Service Manager	Parts Manager	Sales Manager	Workshop Supervisor	Technician 1	Technician 2