



**DIAMONDBACK**

DiamondBackCovers.com / 800 935 4002

# CAB-PANEL SAFETY RECALL KIT

## INSTALLATION GUIDE

MISC-10

**15 minutes**  
Normal install time

**Keep an eye out for these icons:**

**IMPORTANT!**  
Important installation information

**Helpful Hints**  
Tips to assist installation

### PARTS INCLUDED:



Safety Catch



Cab-Panel Tethers (2)



5/16" x 1/4"  
Bronze Bushing



1/2"  
Wrench



1/2"  
Socket



3/16"  
Hex Key

### TOOLS REQUIRED:

## REPLACE THE SAFETY CATCH

**1** Find a second person to support the cab panel while you work.

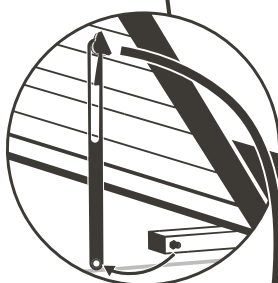
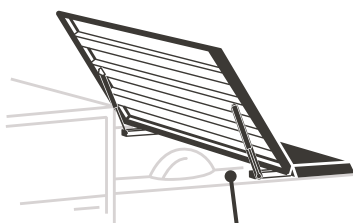
**2** Open the cab panel.

**3** Detach the upper & lower ends of both gas springs.

**4** On the driver side, free the lower half of the original safety catch by removing it from around the ball stud on the square tube arm that extends out from underneath the center panel.

**5** Free the upper half of the safety catch by using a 1/2" socket and 1/2" wrench to remove the ball stud and nut from the catch's upper housing.

**6** Remove and set aside the original safety catch and bushing.



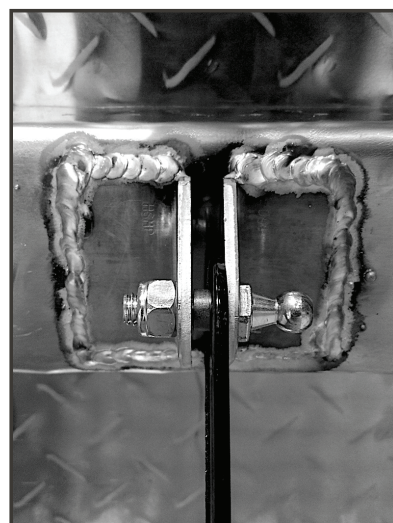
**7** Place the new **safety catch** and new **bushing** into the housing as shown.

The warning label on the safety catch must face the driver side of the truck. If it does not, the safety catch will not work.

**8** Put the ball stud through the hole in the driver side of the housing, then through the safety catch, the bushing, the hole in the passenger side of the housing, and the nut, in that order.

**9** Tighten the nut using a 1/2" socket and 1/2" wrench.

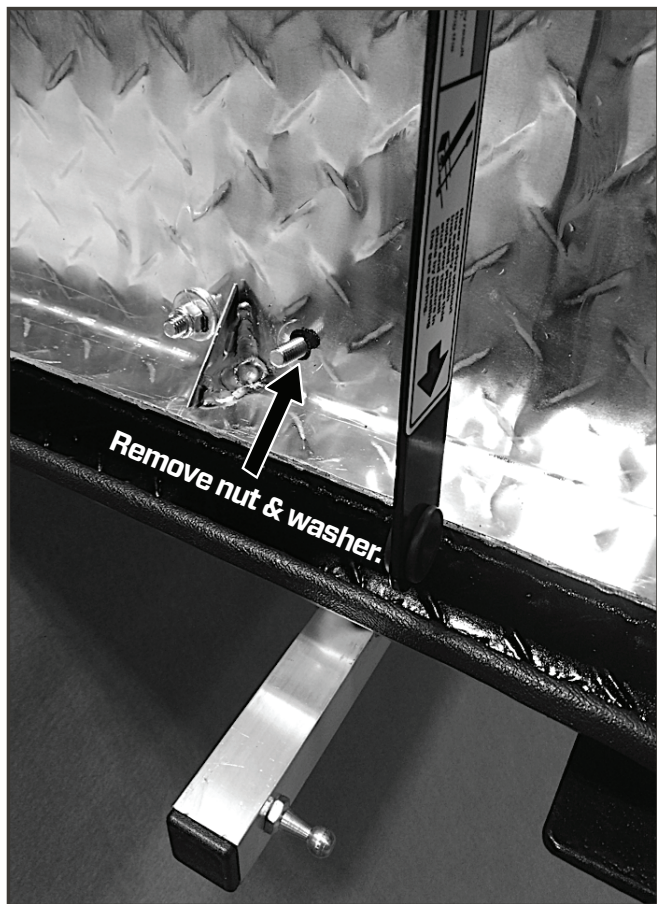
Do not over-tighten and thus crush the bushing. If you do, the housing will be too small and the safety catch will not work.



CONTINUED ON REVERSE >

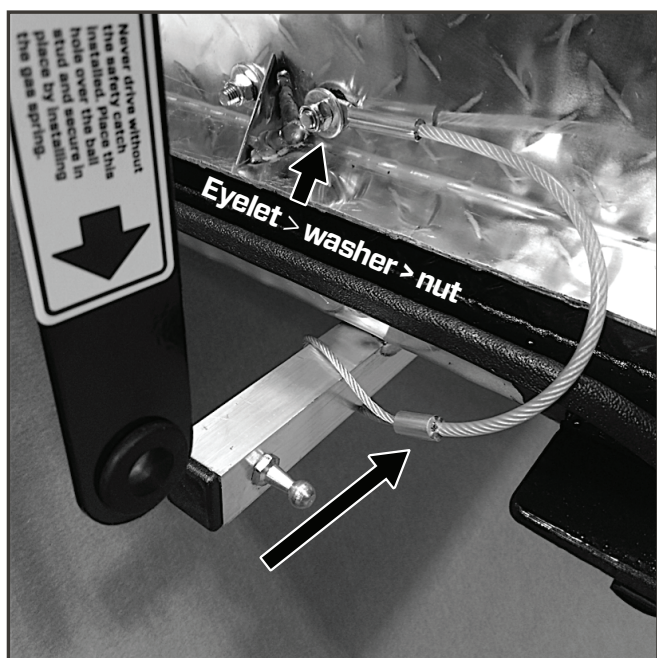
# ADD THE CAB-PANEL TETHERS

- 10** Remove but retain the nut and washer from the outermost hinge bolt using a 1/2" socket and a 3/16" hex key. Do not remove the bolt.



- 11** Place the forged eyelet of a **cab-panel tether** onto the hinge bolt, followed by the washer and the nut.

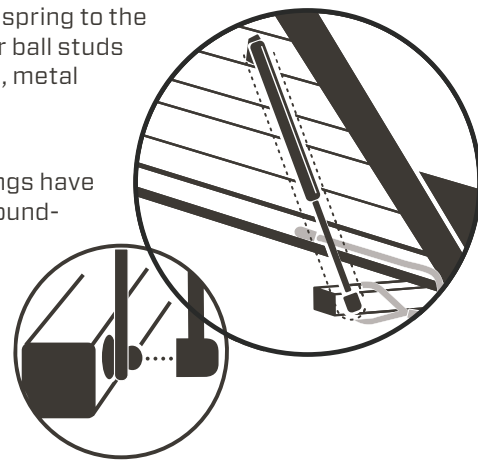
- 12** Slip the loop at the other end of the tether around the square tube arm well past the ball stud.



- 13** Attach the lower half of the new safety catch by placing its hole around this ball stud.

- 14** Reattach a gas spring to the upper and lower ball studs (black barrel up, metal shaft down).

- ★ If your gas springs have two different pound-ages printed on their sides, use the stronger one on the driver side.



- 15** Repeat steps 10-12 and step 14 on the passenger side.

## ⚠ WARNING

Key-lock the cab panel before driving to keep it from blowing open. Keep the safety catch and tethers installed. Without the safety catch and tethers, the cab panel may disconnect from the vehicle in case of a blow-open and cause serious property damage, personal injury, or death.

