



SAFETY BULLETIN

Release Date: February 7, 2019

IND

Communication #: I-19-01

Model Year(s): 2015-2019

— Confidential and Proprietary —

VERSION: R01 (February 7, 2019)

IMPORTANT STOP SALE / STOP INSTALLATION SAFETY NOTICE!

Stop selling affected accessory kits and motorcycles equipped with the affected accessory kits immediately until the repair procedure has been completed on affected units at your dealership. Federal law prohibits the sale of products subject to a recall. Selling such products could subject the seller to substantial penalties.

IMPORTANT

If you are working with a printed copy, please verify you have the most current version of this document.

SUBJECT: ACCESSORY CLUTCH AND BRAKE LEVER KIT - BLACK (2883795-658)

PURPOSE

Indian Motorcycle has identified a potential assembly concern affecting the black Clutch and Brake Lever Accessory Kit (PN: 2883795-658), for use with Indian Scout, Scout Sixty and Bobber models. The assembly concern affects the brake lever portion of the kit, which may not have been assembled to specification. The free-play adjustment screw may not be correctly installed and can result in front brake drag, unintentional front brake application, and potentially locking of front wheel.

To correct this concern, Indian Motorcycle has released this Safety Bulletin instructing dealers to replace the brake lever by following the instructions later in the bulletin.

IMPORTANT

- **Motorcycles that are not equipped with this specific accessory kit ARE NOT AFFECTED BY THIS STOP SALE and may continue to be retailed.**
- **All affected accessory kits (2883795-658) as well as brake levers, pivot pin and nuts must be returned Indian Motorcycle via Parts Stock warranty return.**

AFFECTED MODELS

MODEL YEAR	MODELS	AFFECTED MODELS
2015+	Scout / Scout Sixty / Bobber	This SAFETY BULLETIN notification only affects 2883795–658 accessory kits and motorcycles that have the kits installed. Reference Unit Inquiry on the dealer website or the Service Bulletin list on the STOP site to lookup affected VINs.

CUSTOMER NOTIFICATION

Dealers are required to review their sales records and make arrangements with customers for Bulletin completion. In addition to consumer units, dealers are required to correct any affected units in their inventory. Indian Motorcycle is contacting consumers affected by this recall to explain the concern, projected parts availability date and tow/transport options.

For consumers requesting transport, please start an ASK Polaris case, referencing the bulletin number I-19-01 to receive tow reimbursement.

WARRANTY CLAIM PARTS INFORMATION

Bulletin parts are excluded from the standard RMA policy and cannot be returned. An Initial Recommended Order Quantity has not been provided for this bulletin as the affected population is limited. Use Quantity Ordered to Date and the Open VIN List from the STOP site to determine an order amount that's right for your dealership. For more details, refer to University of Polaris training course "Polaris Item Availability and Daily Ordering" and click on "Bulletin Ordering Training".

2015–2019 INDIAN SCOUT / SIXTY / BOBBER MOTORCYCLES EQUIPPED WITH THE ACCESSORY BLACK CLUTCH AND BRAKE LEVER ACCESSORY KIT PN: 2883795-658	
Bulletin #	I-19-01
Claim Type	SB (Service Bulletin)
Labor Allowance	0.3 hours (18 minutes)
Part Number / Description	2208231 (QTY1) K-Lever, FRMC, IND, BLK
Parts Availability	Limited quantities available
University of Polaris Video Training Required	Yes ¹

¹Polaris requires one person from a dealership to be certified before parts ordering may occur and two people from a dealership to be certified before warranty claims may be processed.

US & CANADA TRANSPORT & MOBILE SERVICE REIMBURSEMENT

Indian Motorcycle will authorize travel or transport up to 1.0 hour of labor to perform the bulletin. Wholegood stock vehicles are not eligible for travel / transport coverage reimbursement. Indian Motorcycle recommends that dealers work with vehicle owners to determine the best solution for their situation. To obtain travel / transport reimbursement, enter the actual labor time up to 1.0 hour, into the Travel Hours or Travel Minutes on the bulletin claim.

INVENTORY / STOCK PART CLAIMS

Dealers should review their service parts inventory and ensure the following service parts are **NOT** used:

- Black Clutch and Brake Lever Accessory Kit PN: 2883795-658

NOTICE

To remove these service parts from circulation, file a parts stock claim as directed below.

Use the following process for filing a PART STOCK warranty claim for any of the parts listed above.

1. Start a new Part Stock warranty claim.
2. Select Product Line: IND
3. Enter today's date into the Date Failed and Date Repair information fields
4. Enter Indian Motorcycle® I-19-01 into the CONCERN field.
5. Enter Indian Motorcycle® I-19-01 into the CAUSE field.
6. Enter Indian Motorcycle® I-19-01 into the CORRECTION field.
7. Enter the part number and quantity.
8. Enter warranty fail codes: 171/279/209
9. Validate the parts.
10. Save and submit the claim to Polaris.

ACCESSORY LABOR

Polaris will cover labor for the removal and installation of accessories required to complete the bulletin work. Follow the steps below to obtain reimbursement.

For accessory removal and installation up to 30 minutes of labor:

Enter the actual labor time for the removal and installation into the Accessory R&R Min Field on the bulletin claim.

For accessory removal and installation over 30 minutes of labor:

1. Start a new Ask Polaris Case, Service & Warranty Question > Authorization: Non-Cosmetic & Polaris ESC or Authorization: Out of Warranty.
2. Enter your contact information and VIN, along with miles and hours into the applicable fields.
3. Enter Indian Motorcycle® I-19-01 in the CONCERN and CAUSE fields. In the CORRECTION field, enter "ACCESSORY REMOVAL AND INSTALLATION".
4. Enter warranty fail codes 140/213/151.
5. Add part 0000541, quantity 1.
6. Attach photos of the vehicle and accessories sufficient to support the labor time requested.
7. Submit the case to Polaris.

BULLETIN CONTACT LIST & SCHEDULING TOOL

A scheduling tool is available for dealers to keep a record of customers contacted and scheduled for this bulletin. This optional tool provides visibility for your dealership and will be helpful to track the status of scheduled service. For more information, log in to <http://www.universityofpolaris.com>.

COVERAGE PERIOD

Coverage will begin on 2/7/2019. This bulletin has no expiration date.

UNIVERSITY OF POLARIS TRAINING REQUIREMENT

Each member of your service department team must complete the training on University of Polaris prior to completing **ANY** work, or submitting **ANY** warranty claim for this Bulletin. You must complete the entire course on University of Polaris in order to get credit.

www.universityofpolaris.com

PARTS RETURN / DISPOSAL INFORMATION

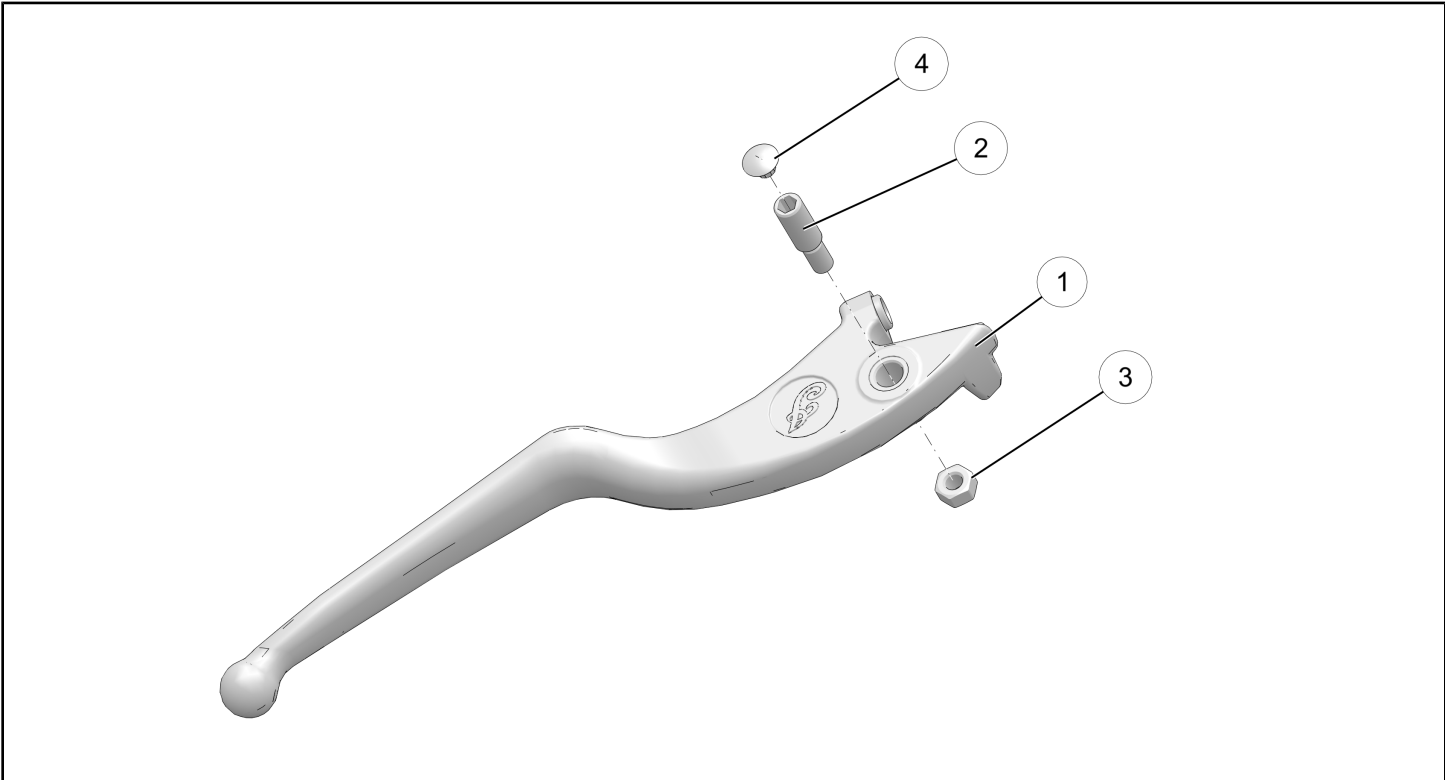
Under no circumstances shall the parts removed be re-used, sold, or re-purposed for another application. It is your dealership / distributor's responsibility to make sure every part replaced (related to this communication) is taken out of circulation and returned to Indian Motorcycle.

FEEDBACK FORM

A feedback form has been created for the technician to provide Polaris with an overall satisfaction rating for the instructions, provide comments on your experience or upload pictures/video. This feedback form is viewable on a mobile device by scanning the QR code or by clicking [HERE](#) if viewing this document electronically.



**I-19-01 BRAKE LEVERS
KIT CONTENTS (P/N 2208231)**



NOTE

658 = Indian® color code

REF	QTY	PART DESCRIPTION	PART NUMBER
①	1	Lever, Brake	-
②	1	Bolt, Pivot	-
③	1	Nut, Lever	-
④	1	Cap, Pin	-
	1	Instructions	9930557

TOOLS REQUIRED

- Safety Glasses
- Pliers, Arc Joint
- Socket Set, Hex Bit, Metric
- Socket Set, Metric
- Commercially Available Pick Tool
- Torque Wrench

The information contained within this document is confidential and protected by U.S. and international copyright laws, and is the property of Polaris Industries. This document is provided for the sole use of authorized Polaris dealers and distributors. This document is not to be distributed, duplicated, or copied, digitally or otherwise, without the written consent of Polaris Industries Inc.

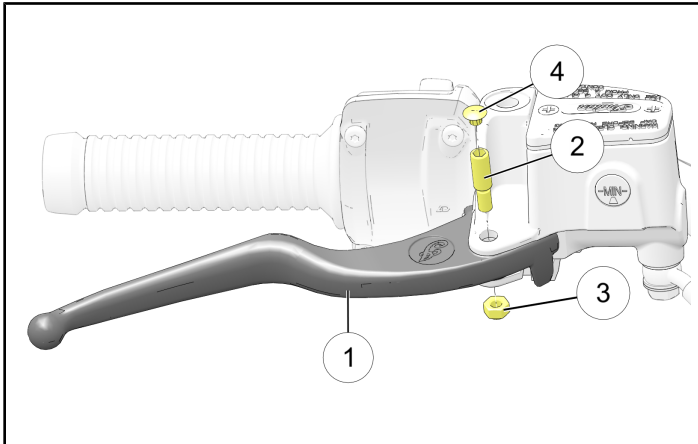
I-19-01 BRAKE LEVER REPLACEMENT

VEHICLE PREPARATION

1. Turn key or ignition switch to “OFF” position and remove key.
2. Ensure motorcycle is parked on a flat surface, kickstand is fully extended, and vehicle is stable prior to starting work.

BRAKE LEVER REMOVAL

1. Remove and retain, pivot cap ④, pivot bolt ②, and nut ③ from brake lever ① for return shipment to Indian Motorcycle.



NOTICE

Use a commercially available pick tool to remove the pivot cap.

2. Remove and retain brake lever ①, for return shipment to Indian Motorcycle.

BRAKE LEVER INSTALLATION

IMPORTANT — AUDIT STEP

The replacement brake lever included with service kit 2208231 has been marked with a white dot, as shown below. A secondary dealer representative must verify the correct lever marked with the white dot is being used.



1. Apply silicone grease to new pivot bolt ②, and brake lever bushing.

IMPORTANT

Use only a **silicone** grease. **Do not** use a petroleum or general use grease on this product.

2. Fit new brake lever ① into place on master cylinder ⑤. Install new pivot bolt ②. Torque Pivot Bolt ② into Master cylinder ⑤ to specification.

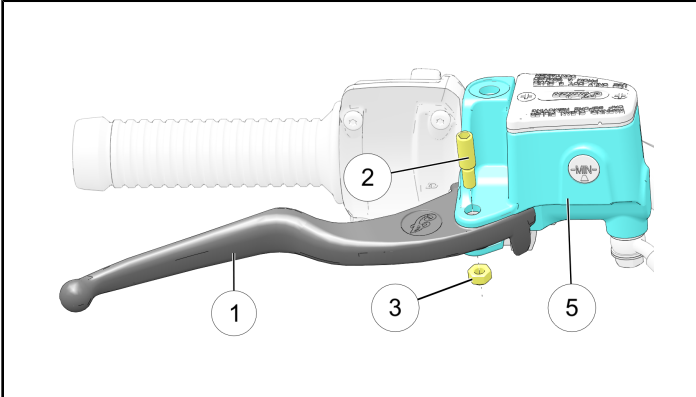
TORQUE

18 in. lbs. (2 Nm)

3. Install new nut ③. Counter-hold pivot bolt ② and torque new nut ③ to specification.

TORQUE

54 in. lbs. (6 Nm)

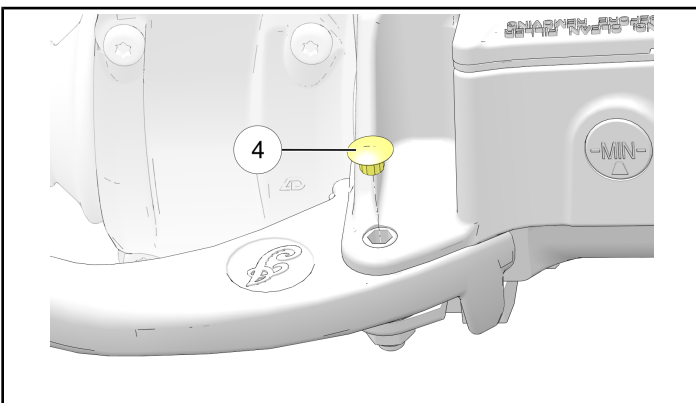


4. Inspect that brake lever and brake light are functioning properly.
 - a. Pull the front brake lever toward the handlebar and hold it. The lever should move freely and smoothly. The lever should feel firm and continue to feel firm until released.
 - b. Release the lever. It should return to its rest position quickly when released.
 - c. With the help of an assistant, cycle the brake lever and confirm the brake light operates as intended.

IMPORTANT — AUDIT STEP

A secondary dealer representative must verify the proper function of the brake light.

- d. If the front brake lever or light fails to perform as stated, start an ASK Polaris case.
5. Secure the pivot cap ④ over the pivot pin using clear tape. Using a small, soft faced mallet, tap the cap into the pivot pin until fully seated.



6. File bulletin I-19-01.